

# Nevada Planning Study: Fed Lands Connectivity

State Land Use Planning Advisory Council  
Central Federal Lands Highway Division (CFL), FHWA  
July 9th, 2021



U.S. Department of Transportation  
**Federal Highway Administration**

# FLH Mission

*Improving transportation to and within Federal and Tribal Lands by providing technical services to the highway transportation community, as well as building accessible and scenic roads that ensure the many national treasures, within our Federal Lands, can be enjoyed by all.*

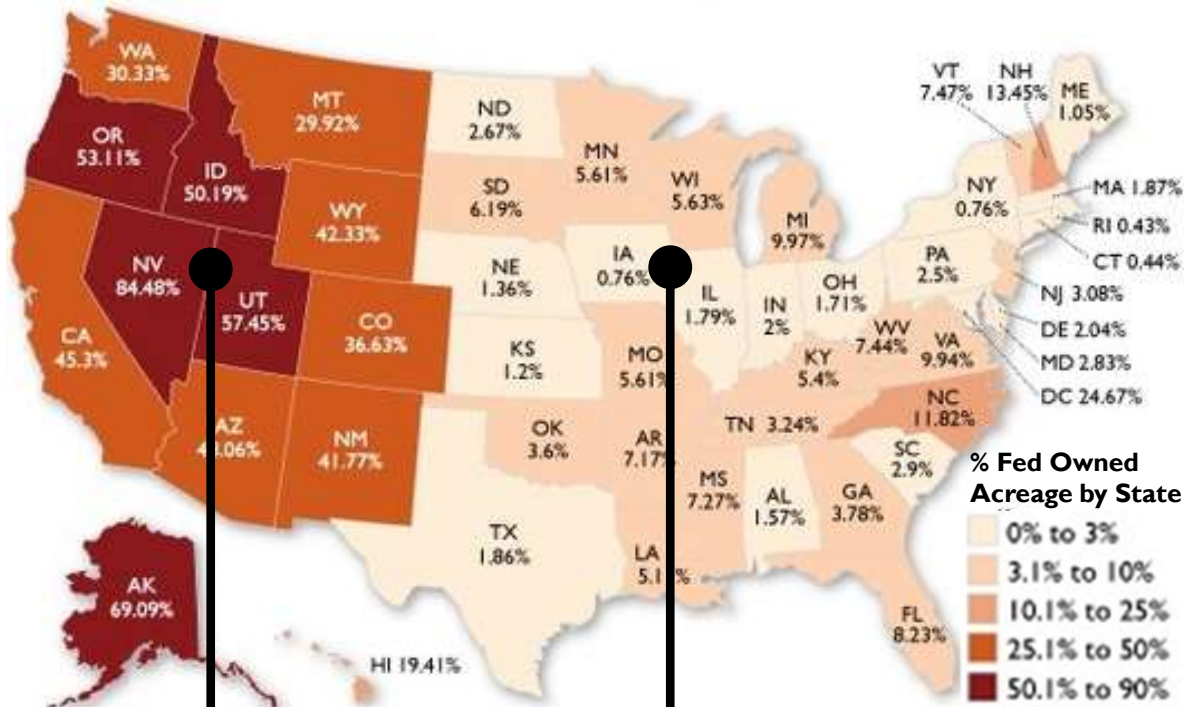


U.S. Department of Transportation  
Federal Highway Administration

## Programs

- **Federal Lands Access Program (FLAP)** Improve transportation facilities owned or maintained by a non-federal agency providing access to, adjacent to, or location within federal lands
- **Federal Lands Transportation Program (FLTP)** Improve transportation facilities owned and maintained by a federal agency
- **Federal Lands Planning Program (FLPP)** Implement transportation planning for Federal lands and Tribal transportation facilities that are consistent with the Statewide and Metropolitan transportation planning procedures under 23 U.S.C.
- **Tribal Transportation Program (TPP)** Provide safe and adequate transportation and public road access to and within Indian reservations, Indian lands, and Alaska Native Village communities

# FLAP Funding Distribution



80% of FLAP  
(\$216 million)  
> 1.5% of Federal Land

20% of FLAP  
(\$54 million)  
< 1.5% of Federal Land

Fiscal Year	FY 2016	FY 2017	FY 2018	FY 2019	FY 2020	Total
Authorization	\$250 M	\$255 M	\$260 M	\$265 M	\$270 M	\$1.30 B

# FLTP Funding Distribution

	FY 2016	FY 2017	FY 2018	FY 2019	FY 2020
NPS	\$268M	\$276M	\$284M	\$292M	\$300M
FWS	\$30M	\$30M	\$30M	\$30M	\$30M
USFS	\$15M	\$16M	\$17M	\$18M	\$19M
BLM, USACE, BOR, and IFAs	\$22M	\$23M	\$24M	\$25M	\$26M
<b>Total</b>	<b>\$335M</b>	<b>\$345M</b>	<b>\$355M</b>	<b>\$365M</b>	<b>\$375M</b>

4 Year Totals:  
 NPS- \$1.420B  
 FWS- \$150M  
 USFS-\$85M  
 BLM, USACE, BOR & IFAs- \$120M

4 Year FLTP Funding = \$1.775B

*Non-Competitive-* By statute the NPS, FWS, and USFS receive annual FLTP sums.

*Competitive-* Based on application submissions from the BLM, BOR, USACE, and eligible Independent Federal Agency, allocation amounts are determined by the Office of the Secretary of Transportation by use of a performance management model.





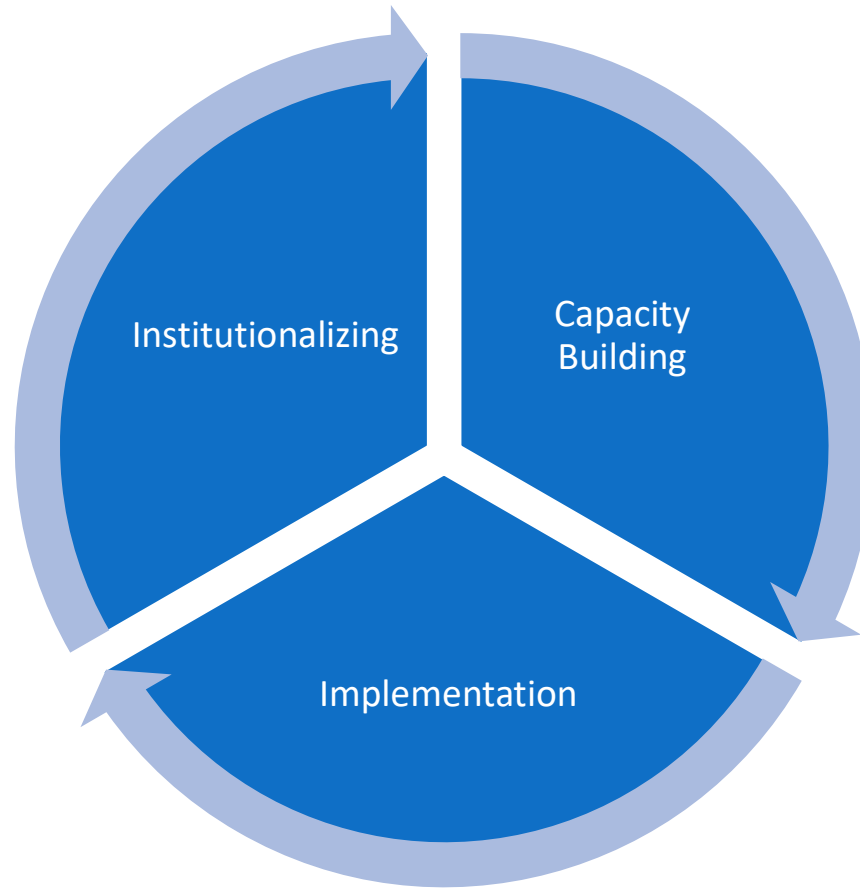
U.S. Department of Transportation  
Federal Highway Administration

# Vision and Purpose

Vision: A planning process that aligns transportation priorities and programs across jurisdictions (federal, state, and local)

Purpose: Develop outreach strategies and data analytics designed to better evaluate regional connectivity across jurisdiction (federal, state, and local).

# Approach



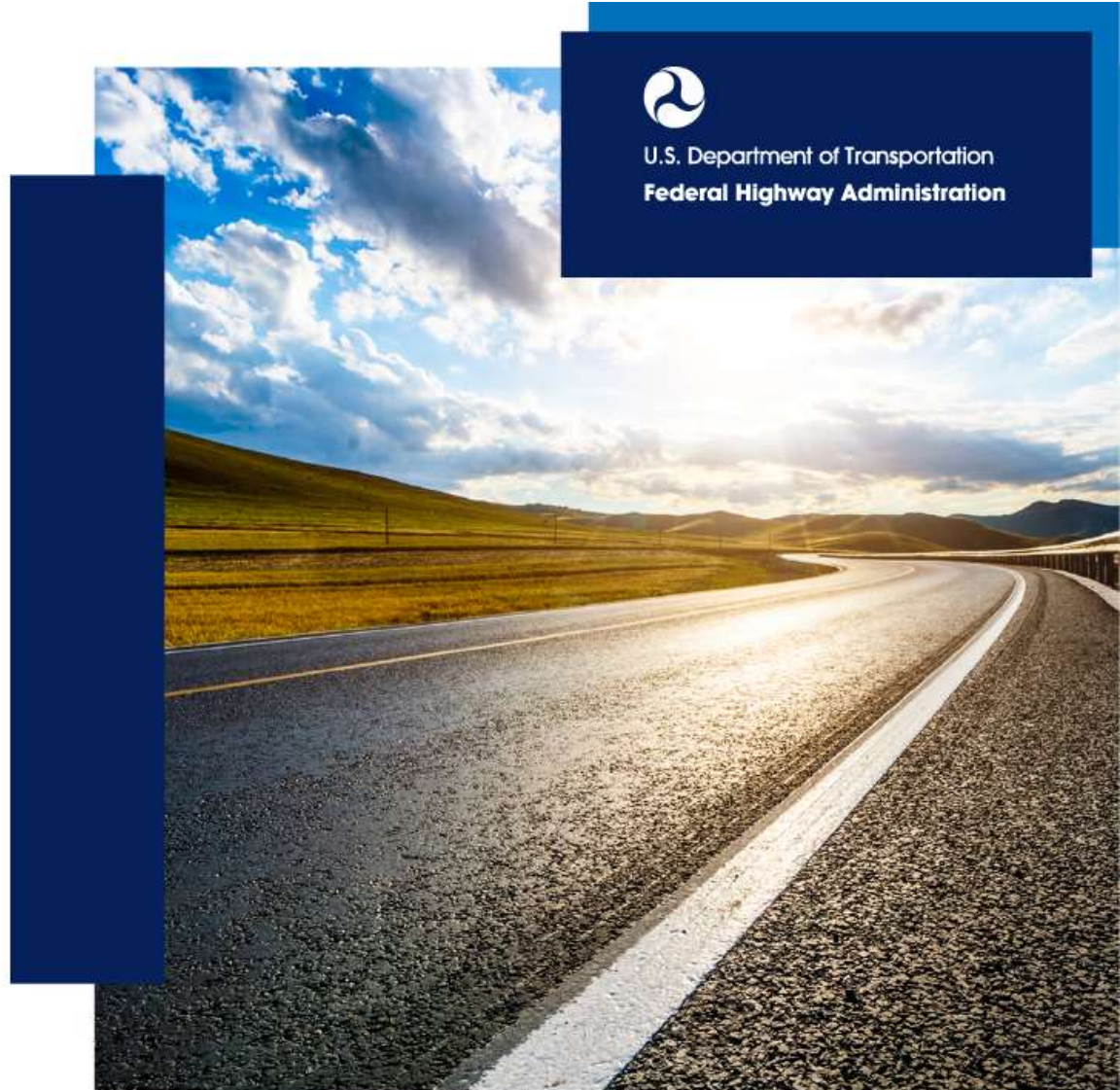
U.S. Department of Transportation  
**Federal Highway Administration**

# Process Implementation

- Identify Study Area
- Outreach
  - Work through FHWA and SDOTs to build relationships with principal partners
  - Identify process improvements for inclusion of FLMAAs
  - Facilitate partnership meetings
- Data Analysis



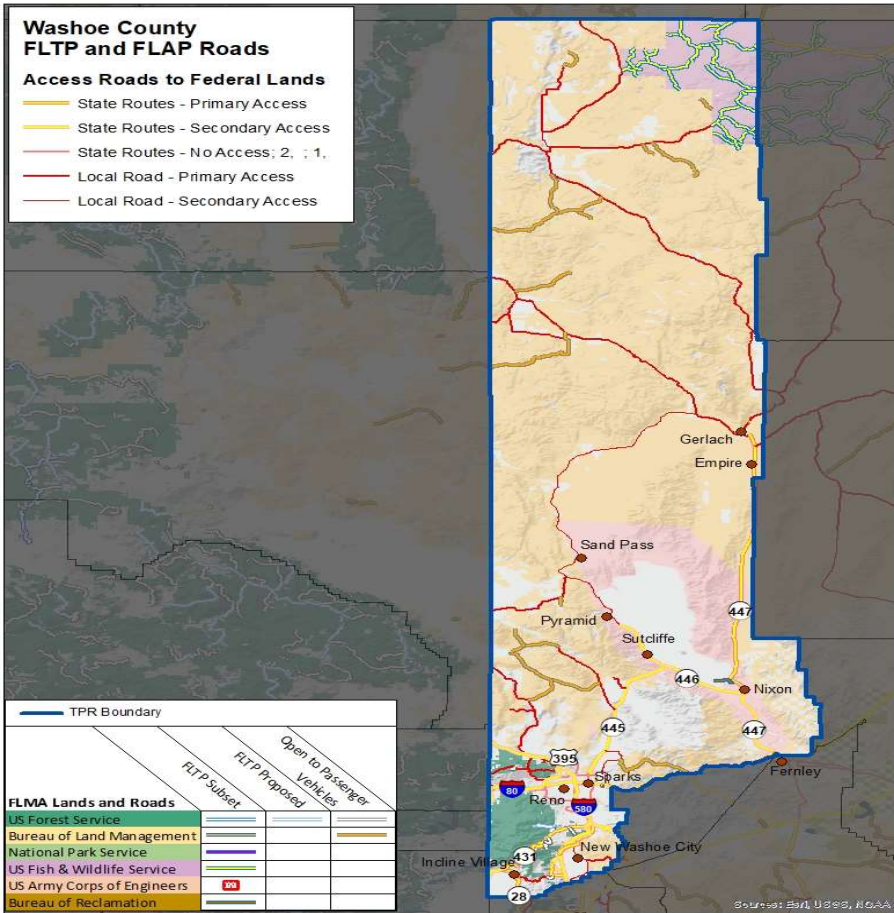
U.S. Department of Transportation  
Federal Highway Administration



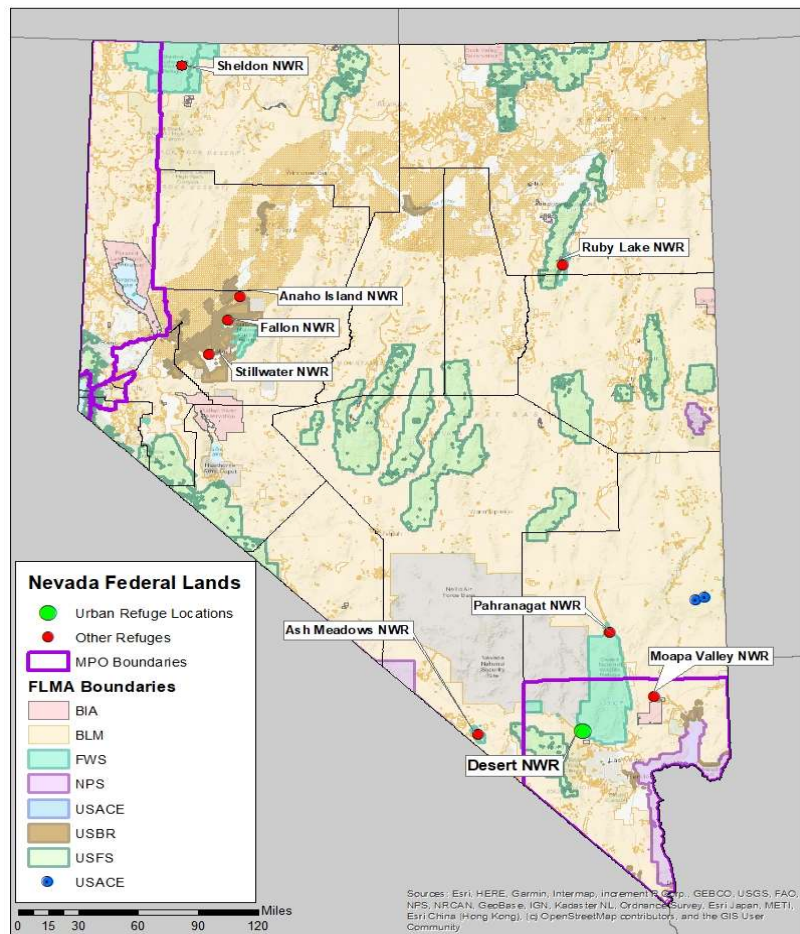


# Defining the Study Area

- Washoe County  
FLTP and FLAP Roads**
- Access Roads to Federal Lands**
- State Routes - Primary Access
  - State Routes - Secondary Access
  - State Routes - No Access; 2 : 1.
  - Local Road - Primary Access
  - Local Road - Secondary Access

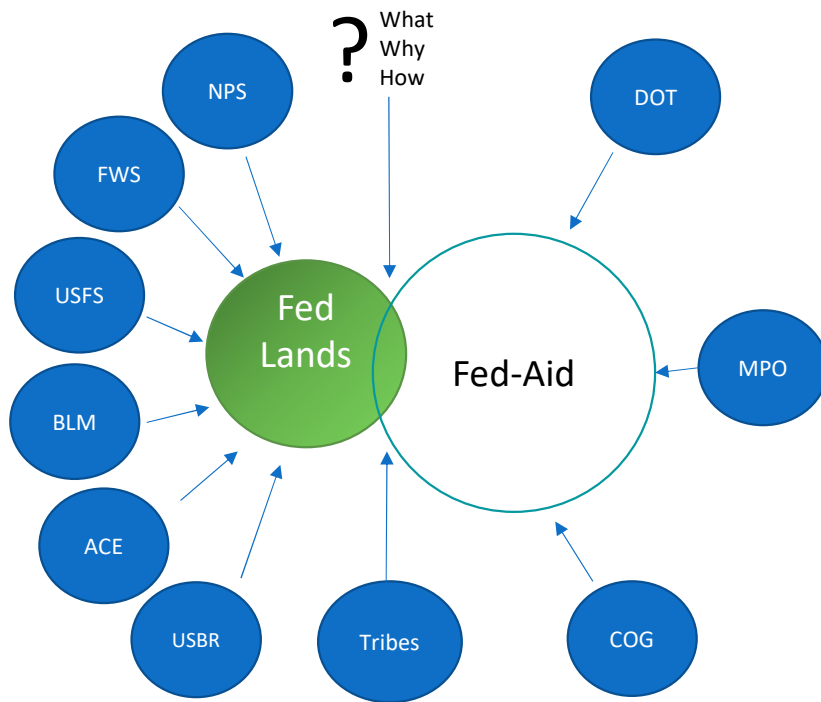


U.S. Department of Transportation  
Federal Highway Administration





# Translating FLMA Needs and Priorities in Statewide and Metro Contexts



What: Shared Needs and Priorities

Why:

- Consistent with Planning Regs
- Leverage Partners
- Better Coverage of Need

How:

A = LRTP

B,C = Consolidated Fed Lands Plug-In Sections in State and local plans

## Outcomes

- Establish a shared vision for enhanced federal lands access in the area studied.
- Establish shared need across FLMAs and with their state and local counterparts.
- Better understanding regional connectivity across jurisdiction (federal, state, and local).





U.S. Department of Transportation  
**Federal Highway Administration**

# Q & A

# Contact Info

Sean Santalla  
Acting Team Lead, (CFL)  
615-781-5767  
[sean.santalla@dot.gov](mailto:sean.santalla@dot.gov)

Hagen Hammons  
Transportation Planner  
503-805-3454  
[hagen.hammons@dot.gov](mailto:hagen.hammons@dot.gov)



U.S. Department of Transportation  
**Federal Highway Administration**



U.S. Department of Transportation  
**Federal Highway Administration**