



Community Development Department

State Land Use Planning Advisory Council

Lyon County Update

November 10, 2022

Planning

Building

Engineering

Code Enforcement

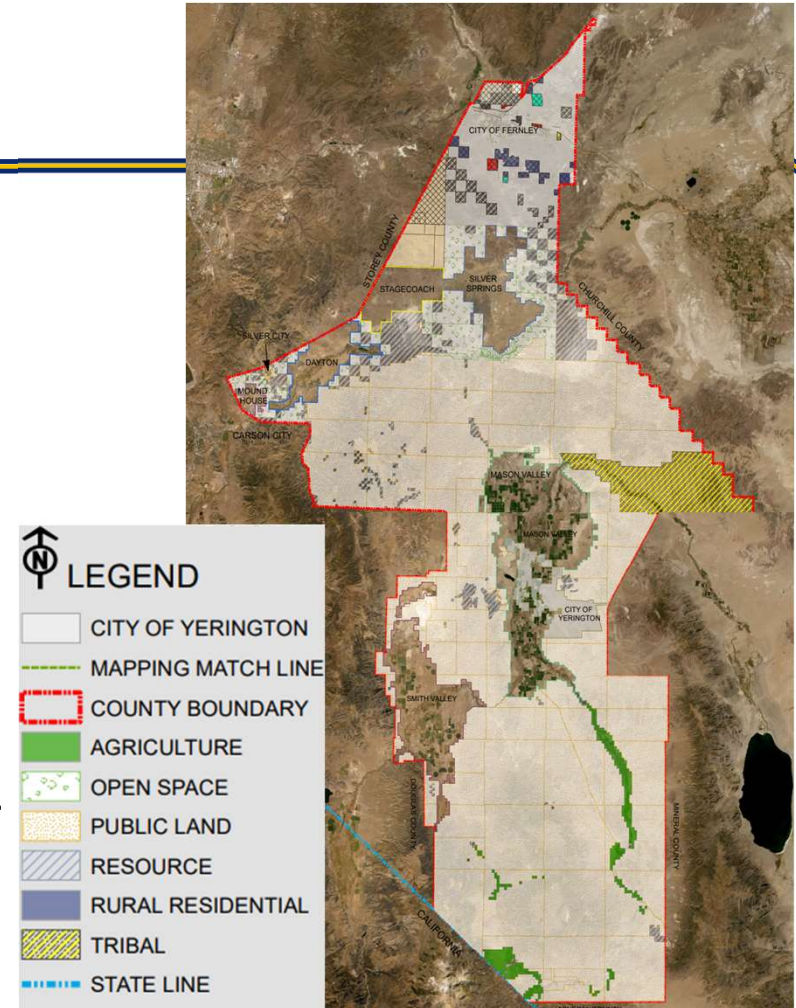
Economic Development



Lyon County

Community Development Department

- 2020 Census Population – **59,235**
- Total Land Area – **2,024 Square Miles**
- **73 Percent** of the land in Lyon County is **Federally owned**
 - 44 Percent is BLM
 - 21 Percent is US Forest Service
 - 4 Percent is Tribal
- 66 Percent of the county is considered “vacant” public land (847,630 Acres)



Planning

Building

Engineering

Code Enforcement

Economic Development



Potential Lands Bill



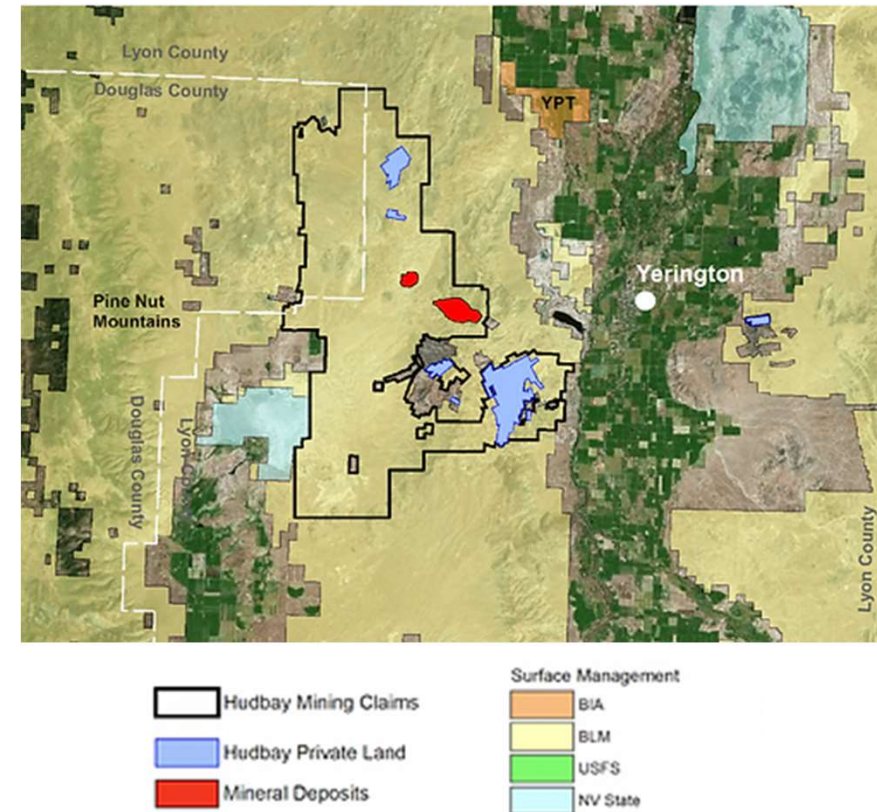
- Lyon County began exploring the possibility of a Public Lands Bill in 2021.
- Goals would be for Lyon County to:
 - Acquire Federally owned lands that the County currently leases;
 - Have future plans for facilities, roads or drainage improvements;
 - Possible lands to be used for economic Development.
- Lands Bill is on hold for now, potentially exploring smaller options.
 - No Lands Bill Drafted



Hudbay Mason Project

Community Development Department

- Hudbay Minerals is in the planning and exploration phase for a potential copper mine located on Public and Private lands in Lyon County.
 - Potentially one of the largest undeveloped copper deposits in North America
- Hudbay Minerals asked to be included in the Lands Bill.
 - Several County Commissioners have expressed concern about Hudbay involvement.



Planning

Building

Engineering

Code Enforcement

Economic Development



Community Development Department

Walker River State Park

- Over **12,000 Acre State park** created in 2018 consisting of 4 units:
 - Pitchfork Ranch
 - Rafter 7 Ranch
 - Flying M Ranch
 - Nine Mile Ranch
- The new park is generating additional vehicle traffic to the area
- The Lyon County Roads Department is currently working with Nevada State Parks to renew the road maintenance agreement.
- Lyon County is also working on an Airport ordinance to allow for an airstrip within the park.



Image of Walker River State Park from Nevada State Parks Website

Planning

Building

Engineering

Code Enforcement

Economic Development



Community Development Department

Questions?

Planning

Building

Engineering

Code Enforcement

Economic Development