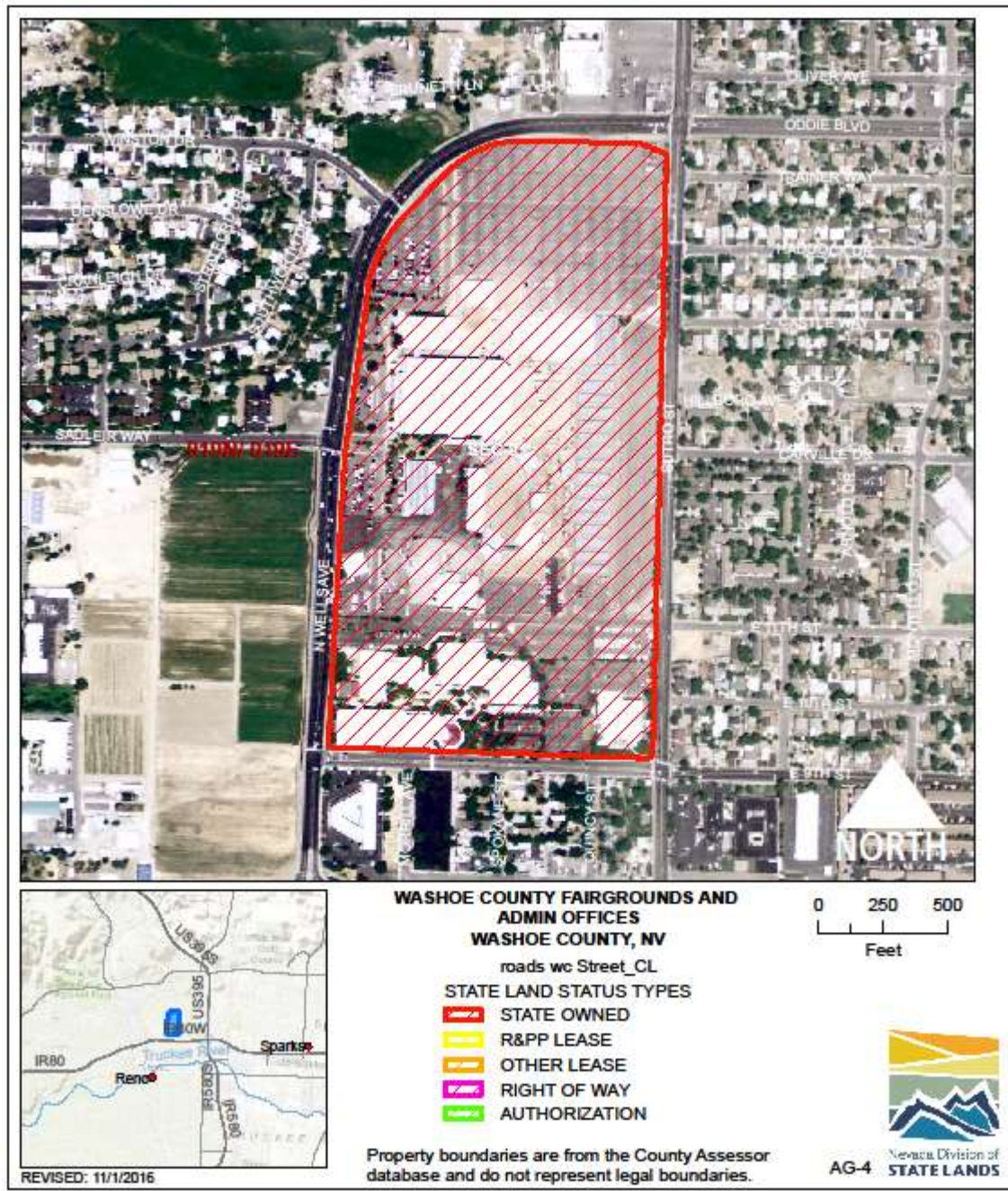


**AGRICULTURE**



**AGRICULTURE: WASHOE COUNTY FAIRGROUNDS AGRI-4**

**LOCATION:** 1350 North Wells Avenue, Reno, Washoe County

**ACRES:** 62.56

**USE/AGENCY:** General Events/Multiple

**MEETS AGENCY LAND NEEDS (Y/N/STRATEGIC):** N

**PERFORMING ASSET (Y/N/PARTIAL):** Y

**ISSUES/RESTRICTIONS:** Lease expires in 2050. Agri community is anxious to hold more events here and have better access through RSCVA.

**RECOMMENDATIONS:** Leased to Washoe County, seek disposal?



**AGRICULTURE:**        **HEADQUARTERS AGRI-5**  
**LOCATION:**        405 South 21<sup>st</sup> Street, Sparks, Washoe County  
**ACRES:**        8.0  
**USE/AGENCY:**    Offices, Support/Department of Agriculture Weights & Measures  
**MEETS AGENCY LAND NEEDS (Y/N/STRATEGIC):** Y  
**PERFORMING ASSET (Y/N/PARTIAL):**     Y  
**ISSUES/RESTRICTIONS:**  
**RECOMMENDATIONS:** Retain for agency operations.





**AGRICULTURE: ELKO BUILDING AGRI-6**  
**LOCATION: 4780 East Idaho Street, Elko, Elko County**  
**ACRES: 1.25**  
**USE/AGENCY: Office, support/Department of Agriculture**  
**MEETS AGENCY LAND NEEDS (Y/N/STRATEGIC): Y**  
**PERFORMING ASSET (Y/N/PARTIAL): Y**  
**ISSUES/RESTRICTIONS:**  
**RECOMMENDATIONS: Retain for agency operations.**



**AGRICULTURE:** BRADLEY COMPLEX (PORTION) AGRI-7  
**LOCATION:** 2201 East Sahara Avenue, Las Vegas, Clark County  
**ACRES:** 2.57  
**USE/AGENCY:** Office, support/Multiple  
**MEETS AGENCY LAND NEEDS (Y/N/STRATEGIC):** Y  
**PERFORMING ASSET (Y/N/PARTIAL):** Y  
**ISSUES/RESTRICTIONS:**  
**RECOMMENDATIONS:** Retain for agency operations.