

**CHILD AND FAMILY SERVICES**



**CHILD AND FAMILY SERVICES: CHILDRENS HOME EXCESS CFS-2**

**LOCATION:** Carson City

**ACRES:** 52.58

**USE/AGENCY:** Vacant/B&G

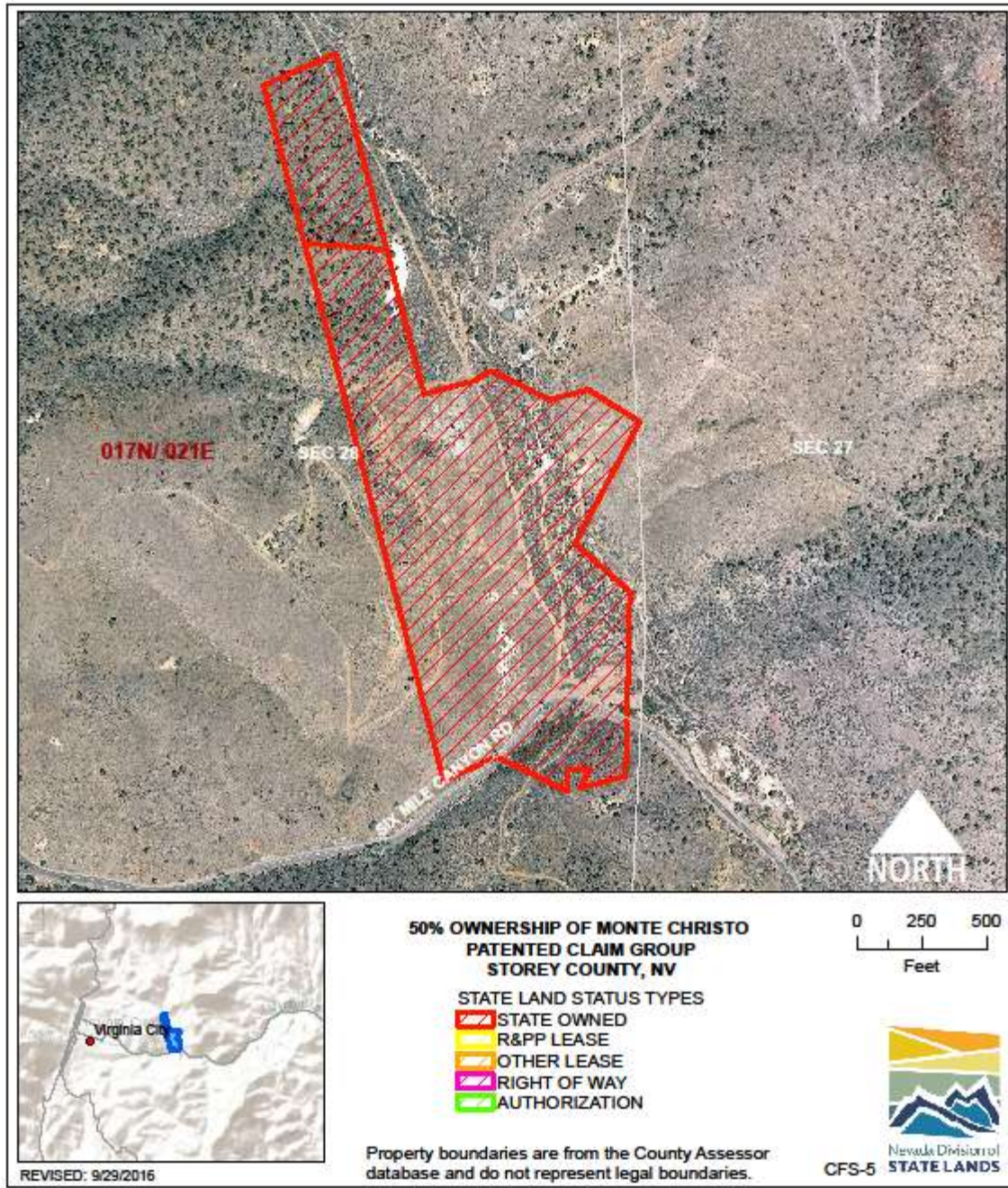
**MEETS AGENCY LAND NEEDS (Y/N/STRATEGIC):** S

**PERFORMING ASSET (Y/N/PARTIAL):** N

**ISSUES/RESTRICTIONS:**

**RECOMMENDATIONS:** Excess property, seek potential disposal when market dictates.





**CHILD AND FAMILY SERVICES: MONTE CHRISTO CFS-5**

**LOCATION: Storey County**

**ACRES: 38.38**

**USE/AGENCY: Vacant/B&G**

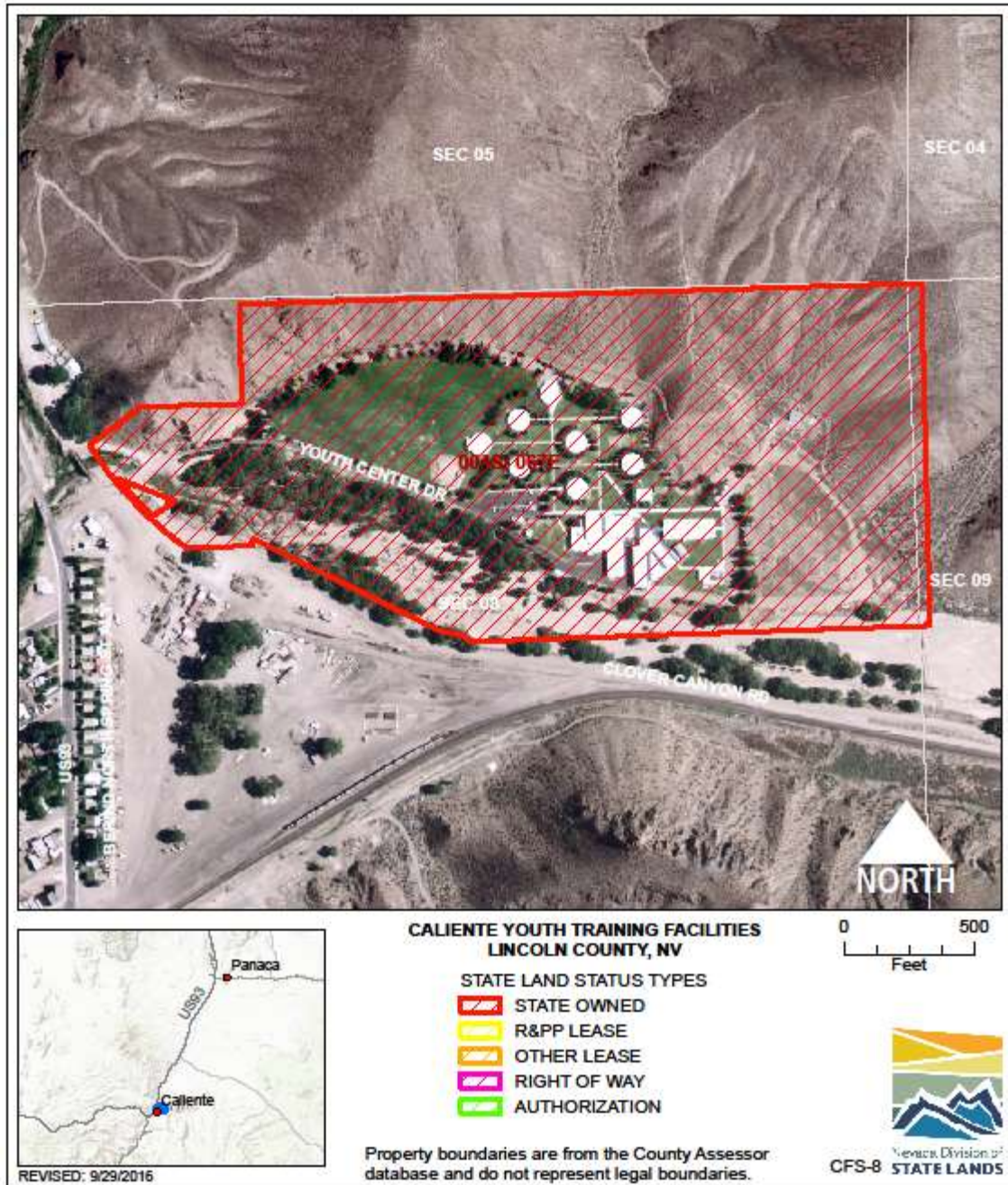
**MEETS AGENCY LAND NEEDS (Y/N/STRATEGIC): N**

**PERFORMING ASSET (Y/N/PARTIAL): N**

**ISSUES/RESTRICTIONS: Patented mining claim 1/2 interest**

**RECOMMENDATIONS: Recommend disposal.**





**CHILD AND FAMILY SERVICES: CALIENTE YOUTH TRAINING FACILITY CFS-8**

**LOCATION: 200 Clover Creek Lane, Caliente, Lincoln County**

**ACRES: 81.06**

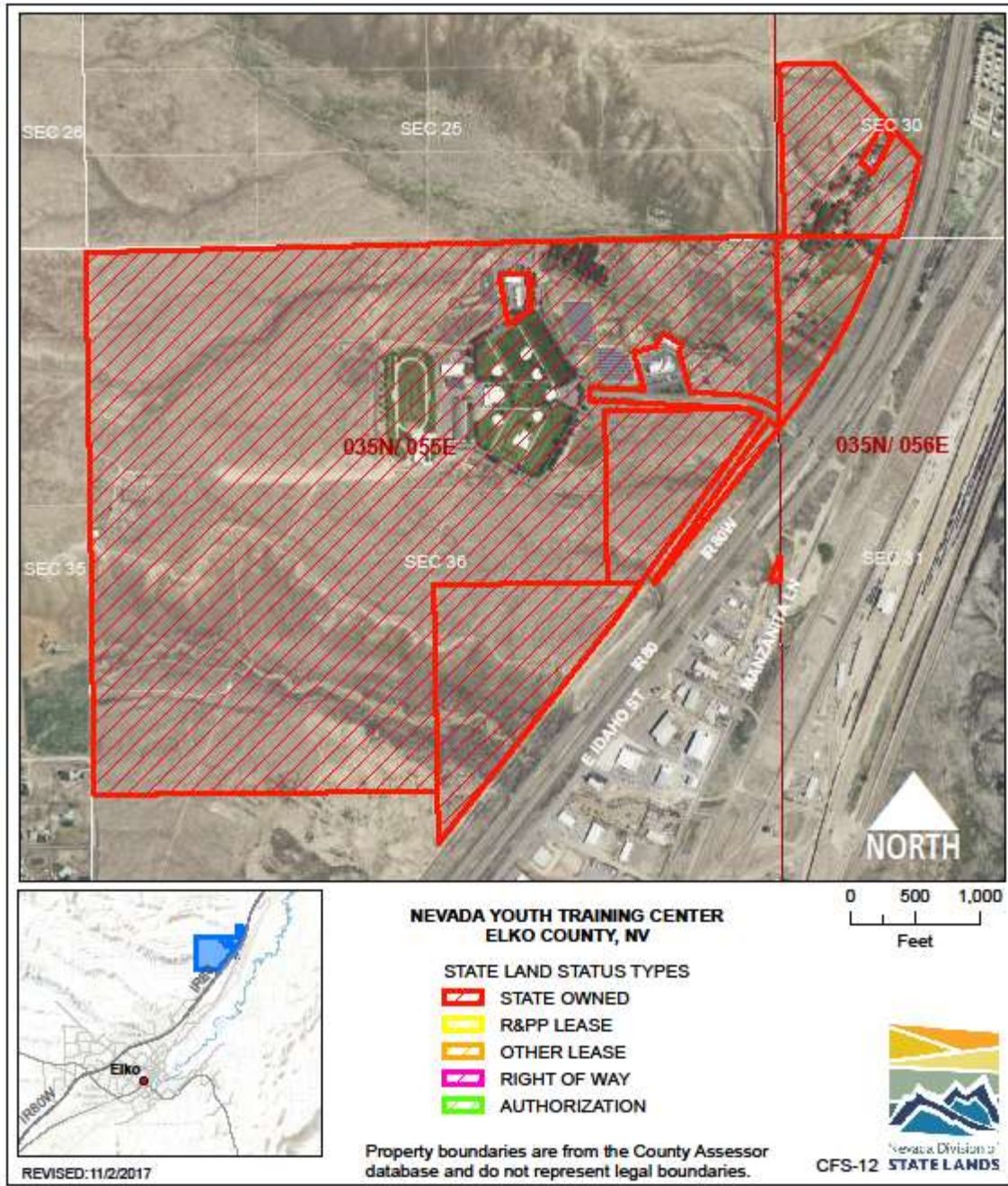
**USE/AGENCY: Offices, residences, support/Child and Family Services**

**MEETS AGENCY LAND NEEDS (Y/N/STRATEGIC): Y**

**PERFORMING ASSET (Y/N/PARTIAL): Y**

**ISSUES/RESTRICTIONS:**

**RECOMMENDATIONS: Retain for agency operations.**



**CHILD AND FAMILY SERVICES: NV YOUTH TRAINING CENTER CFS-12**  
**LOCATION: 100 Youth Center Road, Elko, Elko County**  
**ACRES: 473.83**  
**USE/AGENCY: Offices, residences, support/Child and Family Services**  
**MEETS AGENCY LAND NEEDS (Y/N/STRATEGIC): S**  
**PERFORMING ASSET (Y/N/PARTIAL): P**  
**ISSUES/RESTRICTIONS:**  
**RECOMMENDATIONS: Retain for agency operations, dispose of excess 112 acres.**





**CHILD AND FAMILY SERVICES: SUMMIT VIEW CORRECTION CENTER CFS-17**  
**LOCATION: 5730 Range Road, Las Vegas, Clark County**  
**ACRES: 12.82**  
**USE/AGENCY: Offices, residences, support/Child and Family Services**  
**MEETS AGENCY LAND NEEDS (Y/N/STRATEGIC): Y**  
**PERFORMING ASSET (Y/N/PARTIAL): Y**  
**ISSUES/RESTRICTIONS: Buildings and grounds are a lease/purchase agreement.**  
**RECOMMENDATIONS: Retain for agency operations.**