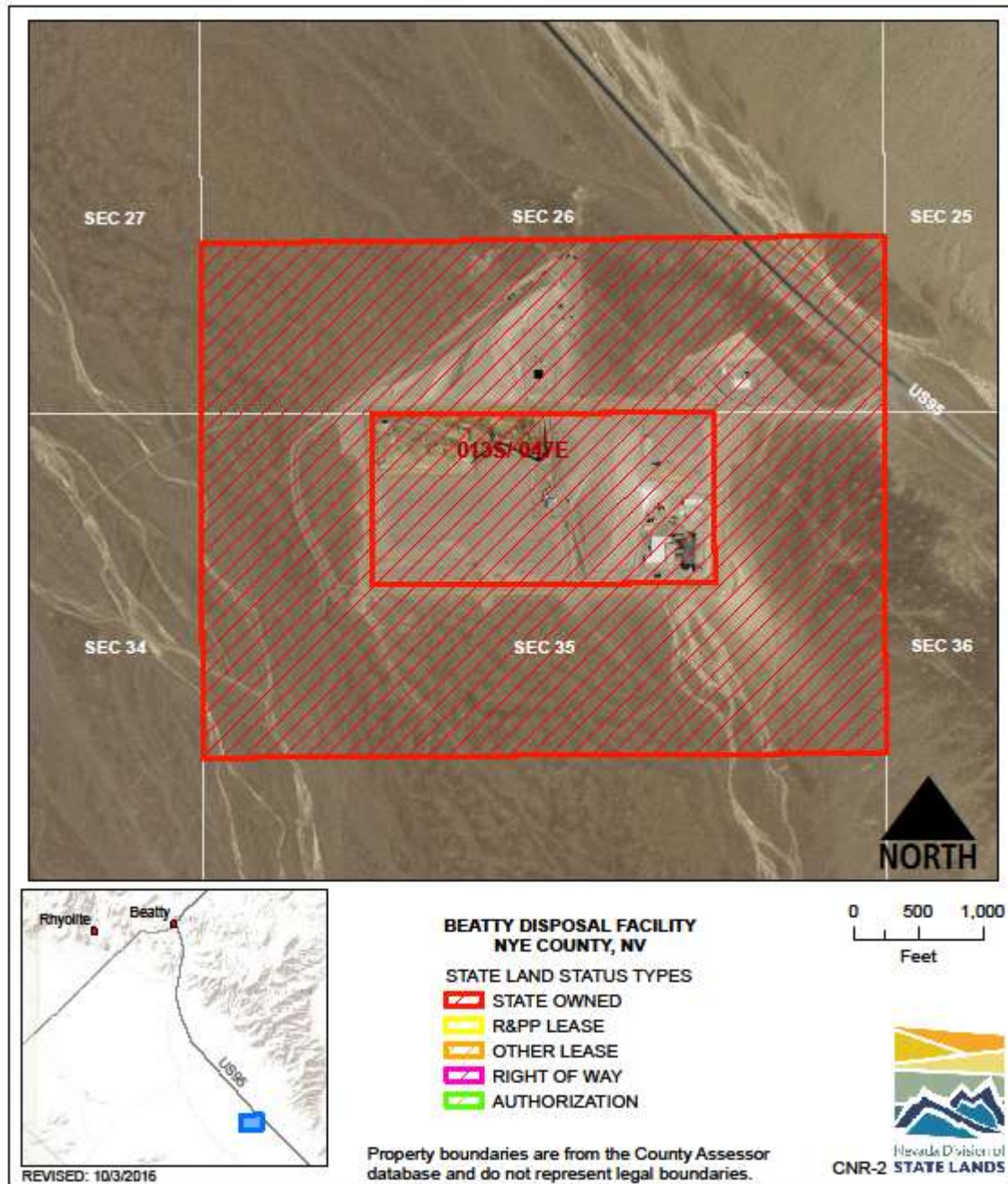


## CONSERVATION AND NATURAL RESOURCES



**CONSERVATION AND NATURAL RESOURCES: BEATTY DISPOSAL CNR-2**

**LOCATION:** 13 miles S of Beatty, West of US95, Nye County

**ACRES:** 484.12

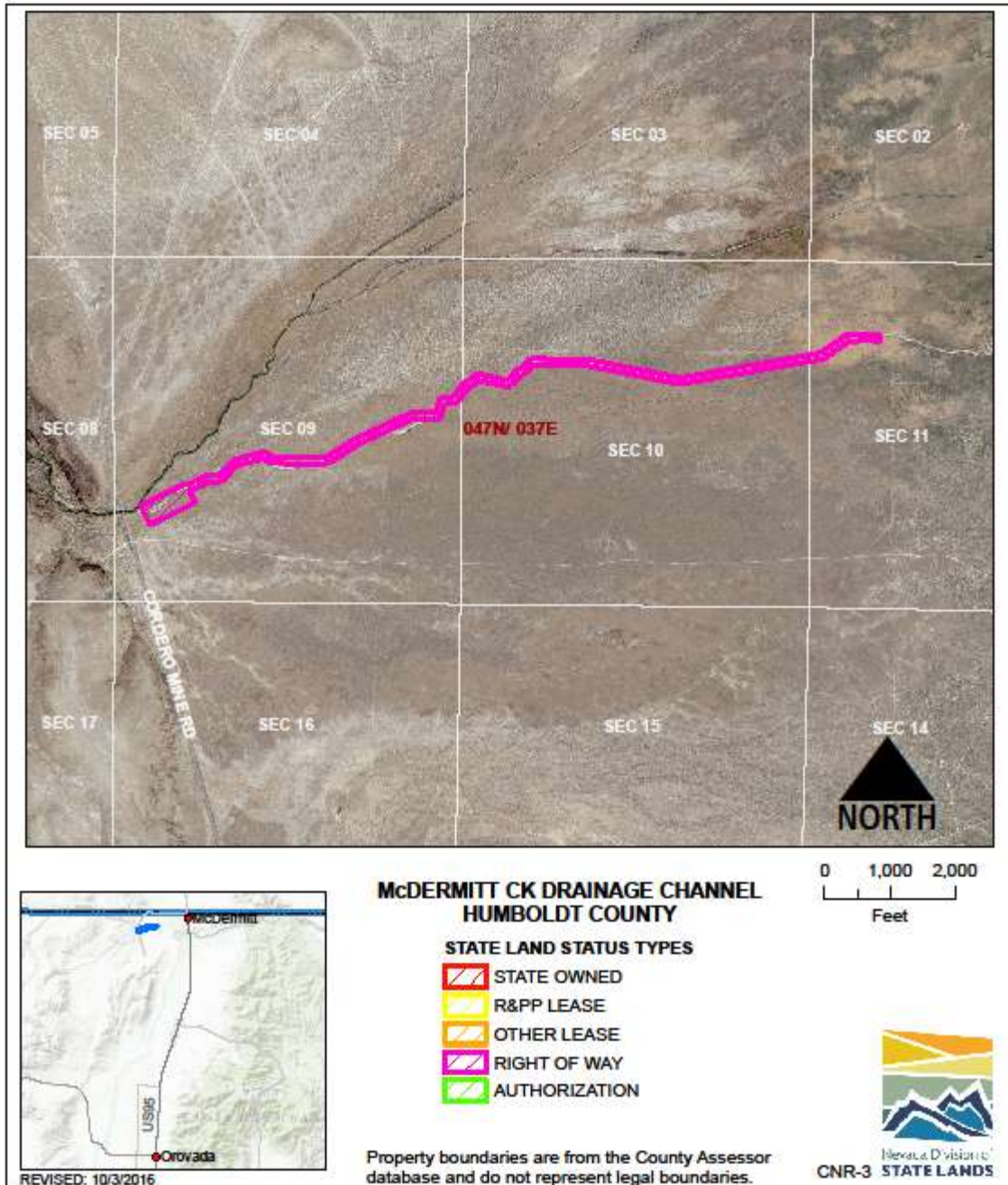
**USE/AGENCY:** Infrastructure, waste disposal/B&G, DCNR

**MEETS AGENCY LAND NEEDS (Y/N/STRATEGIC):** Y

**PERFORMING ASSET (Y/N/PARTIAL):** Y

**ISSUES/RESTRICTIONS:** R&PP patent restrictions

**RECOMMENDATIONS:** Retain for agency operations.



**CONSERVATION AND NATURAL RESOURCES: McDERMITT CK DRAINAGE CNR-3**

**LOCATION: South of McDermitt, Humboldt County**

**ACRES: 32.36**

**USE/AGENCY: Infrastructure/B&G**

**MEETS AGENCY LAND NEEDS (Y/N/STRATEGIC): N**

**PERFORMING ASSET (Y/N/PARTIAL): P**

**ISSUES/RESTRICTIONS: Agreement - 2-mile drainage channel, 100' wide, perpetual r-o-w, maintained by McDermitt Tribe. Court-ordered.**

**RECOMMENDATIONS: Dispose of lease to Tribe as soon as practical.**





**CONSERVATION AND NATURAL RESOURCES: FUTURE BUILDING CNR-5**

**LOCATION: El Capitan and Flamingo, Las Vegas**

**ACRES: 7.67**

**USE/AGENCY: Office, Support/DCNR and NDOW**

**MEETS AGENCY LAND NEEDS (Y/N/STRATEGIC): Y**

**PERFORMING ASSET (Y/N/PARTIAL): Y**

**ISSUES/RESTRICTIONS: R&PP**

**RECOMMENDATIONS: Retain for agency operations.**