

## DEPARTMENT OF MOTOR VEHICLES



**BUILDINGS AND GROUNDS: DECATUR DMV BG-107**

**LOCATION:** 7170 North Decatur Blvd., Las Vegas, Clark County

**ACRES:** 35.16

**USE/AGENCY:** Offices, support/DMV, PS

**MEETS AGENCY LAND NEEDS (Y/N/STRATEGIC):** Y

**PERFORMING ASSET (Y/N/PARTIAL):** Y

**ISSUES/RESTRICTIONS:** R&PP lease.

**RECOMMENDATIONS:** Retain for agency operations, portion available for other agencies.



**BUILDINGS AND GROUNDS:**            **HENDERSON DMV BG-110**  
**LOCATION:**    1399 American Pacific Drive, Henderson, Clark County  
**ACRES:**            5.83  
**USE/AGENCY:**            Offices, support/DMV  
**MEETS AGENCY LAND NEEDS (Y/N/STRATEGIC):** Y  
**PERFORMING ASSET (Y/N/PARTIAL):**    Y  
**ISSUES/RESTRICTIONS:**  
**RECOMMENDATIONS:** Retain for agency operations.



**BUILDINGS AND GROUNDS: DMV HEADQUARTERS BG-111**

**LOCATION: 555 Wright Way, Carson City**

**ACRES: 16.56**

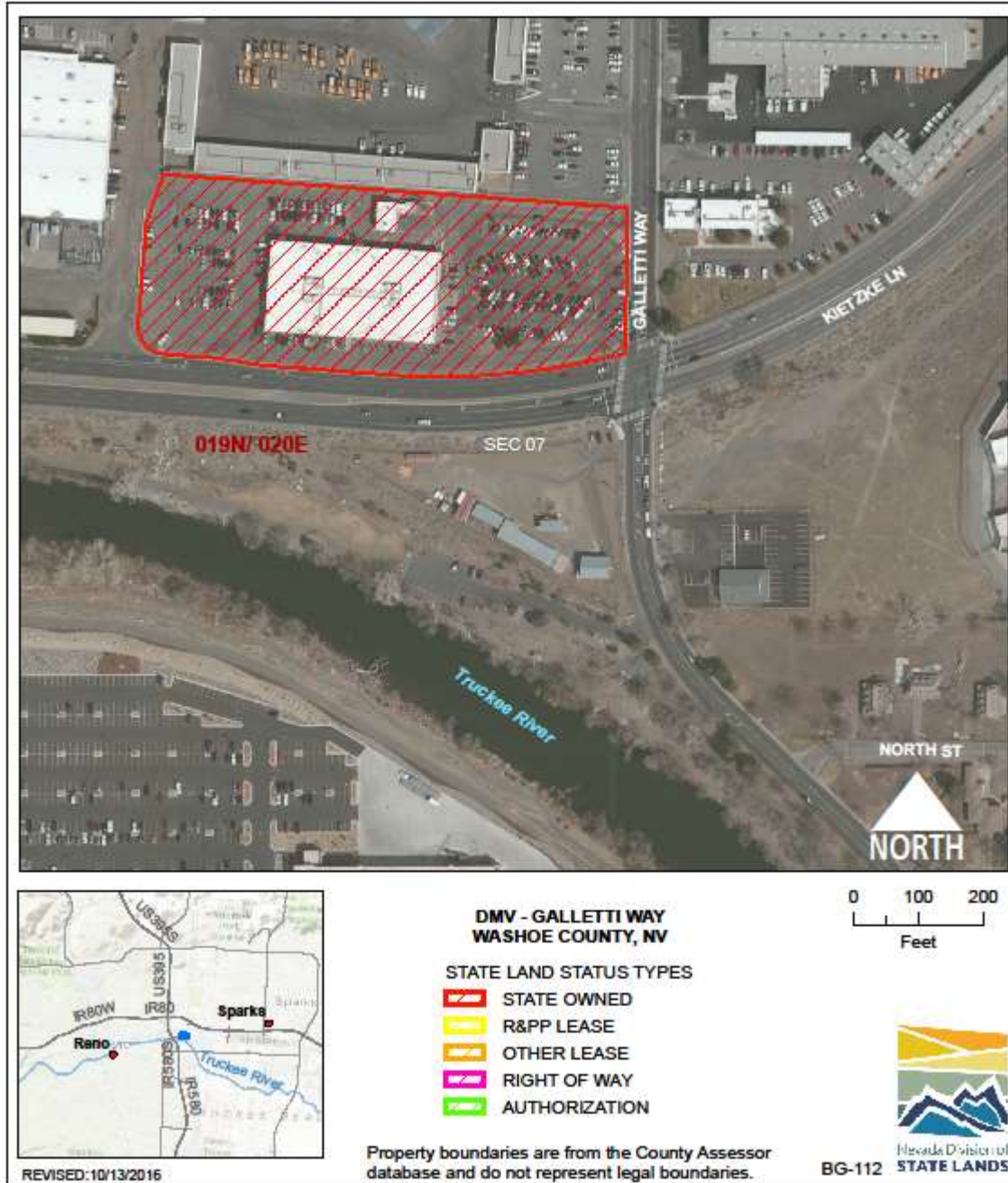
**USE/AGENCY: Offices, support/DMV**

**MEETS AGENCY LAND NEEDS (Y/N/STRATEGIC): Y/S**

**PERFORMING ASSET (Y/N/PARTIAL): Y**

**ISSUES/RESTRICTIONS:**

**RECOMMENDATIONS: Retain for agency operations.**



**BUILDINGS AND GROUNDS: GALLETTI DMV BG-112**

**LOCATION: 305 Galletti Way, Reno, Washoe County**

**ACRES: 4.63**

**USE/AGENCY: Offices, support/DMV**

**MEETS AGENCY LAND NEEDS (Y/N/STRATEGIC): N**

**PERFORMING ASSET (Y/N/PARTIAL): P**

**ISSUES/RESTRICTIONS:**

**RECOMMENDATIONS: Retain for agency operations, but need new larger site. If DMV moves, this property would be reverted back to NDOT pursuant to original agreement.**



**BUILDINGS AND GROUNDS:            DONOVAN WAY DMV BG-115**

**LOCATION: 4110 Donovan Way, Las Vegas, Clark County**

**ACRES: 6.74**

**USE/AGENCY: Offices, support/DMV**

**MEETS AGENCY LAND NEEDS (Y/N/STRATEGIC): Y**

**PERFORMING ASSET (Y/N/PARTIAL): Y**

**ISSUES/RESTRICTIONS:**

**RECOMMENDATIONS: Retain for agency operations.**



**BUILDINGS AND GROUNDS: FLAMINGO CIMARRON DMV BG-116**

**LOCATION:** 8250 West Flamingo Road, Las Vegas, Clark County

**ACRES:** 20.50

**USE/AGENCY:** Offices, support/DMV

**MEETS AGENCY LAND NEEDS (Y/N/STRATEGIC):** Y

**PERFORMING ASSET (Y/N/PARTIAL):** Y

**ISSUES/RESTRICTIONS:** R&PP patent.

**RECOMMENDATIONS:** Retain for agency operations, portion reserved for DPS.



**BUILDINGS AND GROUNDS: FUTURE DMV BG-120**  
**LOCATION:** Corner of Silverado and Valley View, Las Vegas  
**ACRES:** 20.02  
**USE/AGENCY:** Vacant/B&G  
**MEETS AGENCY LAND NEEDS (Y/N/STRATEGIC):** S  
**PERFORMING ASSET (Y/N/PARTIAL):** P  
**ISSUES/RESTRICTIONS:** R&PP lease.  
**RECOMMENDATIONS:** Retain for agency operations.



**MOTOR VEHICLES/PUBLIC SAFETY: SOUTH MEADOWS DMV MVPS-15**  
**LOCATION: NW corner Sandhill Road and Double Diamond Pkwy., Reno, Washoe County**  
**ACRES: 15.45**  
**USE/AGENCY: Vacant/DMV**  
**MEETS AGENCY LAND NEEDS (Y/N/STRATEGIC): S**  
**PERFORMING ASSET (Y/N/PARTIAL): P**  
**ISSUES/RESTRICTIONS: Vacant**  
**RECOMMENDATIONS: Retain for agency operations.**