

EMPLOYMENT TRAINING AND REHABILITATION



EMPLOYMENT TRAINING AND REHABILITATION: EMPLOYMENT SECURITY EMPL-1

LOCATION: 500 East 3rd Street, Carson City

ACRES: 2.57

USE/AGENCY: Offices/DETR

MEETS AGENCY LAND NEEDS (Y/N/STRATEGIC): Y

PERFORMING ASSET (Y/N/PARTIAL): Y

ISSUES/RESTRICTIONS: Part of Capital Complex Master Plan

RECOMMENDATIONS: Retain for agency operations.



EMPLOYMENT TRAINING AND REHABILITATION: CASUAL LABOR EMPL-6
LOCATION: 420 Galletti Way, Sparks, Washoe County
ACRES: 1.02
USE/AGENCY: Offices/DETR
MEETS AGENCY LAND NEEDS (Y/N/STRATEGIC): Y
PERFORMING ASSET (Y/N/PARTIAL): Y
ISSUES/RESTRICTIONS:
RECOMMENDATIONS: Retain for agency operations.



EMPLOYMENT TRAINING AND REHABILITATION: ELKO EMPLOYMENT SECURITY OFFICE EMPL-7

LOCATION: 172 Sixth Street, Elko, Elko County

ACRES: 0.37

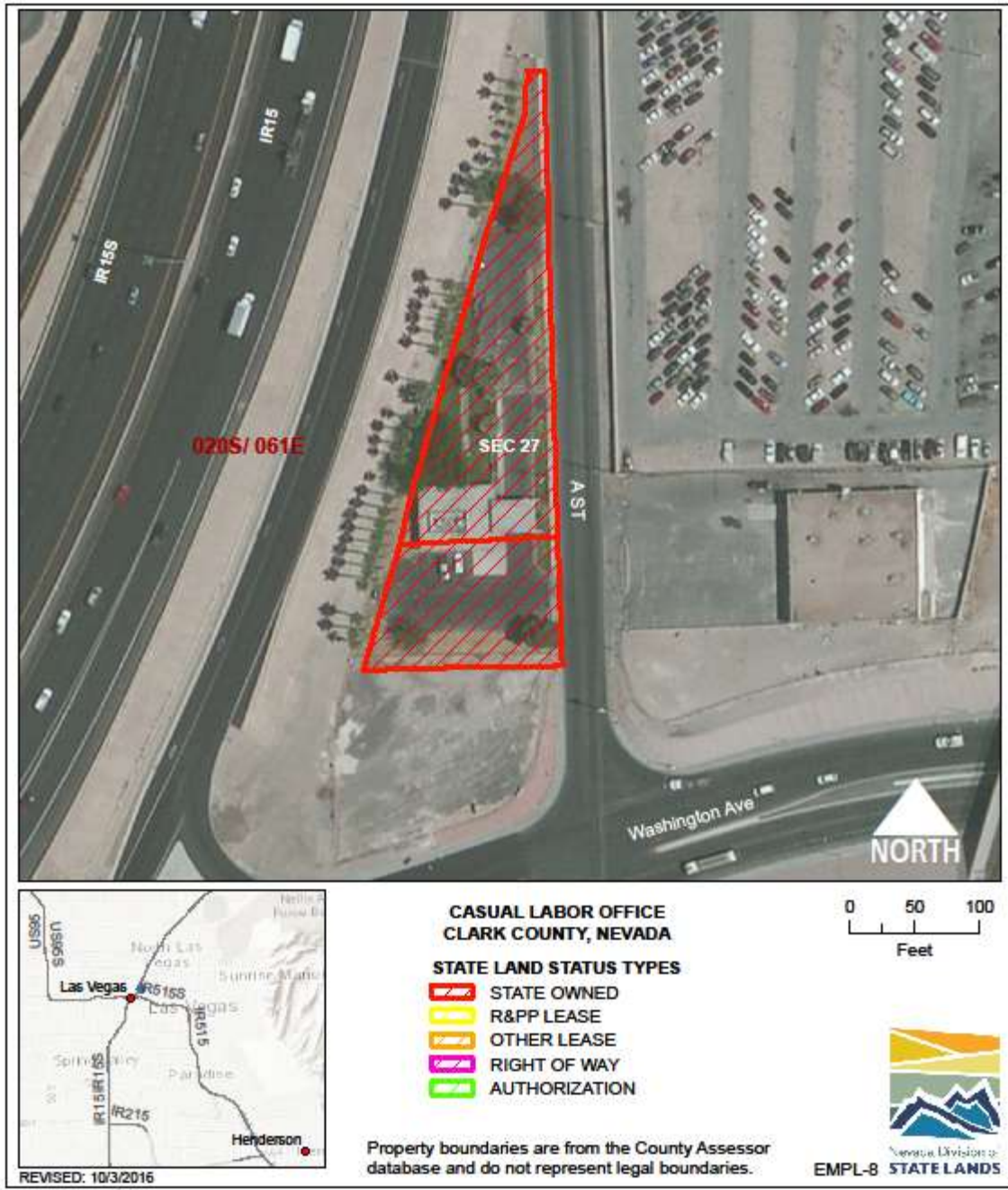
USE/AGENCY: Offices/DETR

MEETS AGENCY LAND NEEDS (Y/N/STRATEGIC): Y

PERFORMING ASSET (Y/N/PARTIAL): Y

ISSUES/RESTRICTIONS:

RECOMMENDATIONS: Retain for agency operations.



EMPLOYMENT TRAINING AND REHABILITATION: CASUAL LABOR LAS VEGAS EMPL-8

LOCATION: 1001 A Street, Las Vegas, Clark County

ACRES: 0.85

USE/AGENCY: Offices/DETR

MEETS AGENCY LAND NEEDS (Y/N/STRATEGIC): Y

PERFORMING ASSET (Y/N/PARTIAL): Y

ISSUES/RESTRICTIONS:

RECOMMENDATIONS: Retain for agency operations.



EMPLOYMENT TRAINING AND REHABILITATION: EMPLOYMENT SECURITY FALLON EMPL-9

LOCATION: 121 Industrial Way, Fallon, Churchill County

ACRES: 0.52

USE/AGENCY: Offices/DETR

MEETS AGENCY LAND NEEDS (Y/N/STRATEGIC): Y

PERFORMING ASSET (Y/N/PARTIAL): Y

ISSUES/RESTRICTIONS:

RECOMMENDATIONS: Retain for agency operations.



EMPLOYMENT TRAINING AND REHABILITATION EMPL-11

LOCATION: 2800 East St. Louis Avenue, Las Vegas, Clark County

ACRES: 7.67

USE/AGENCY: Offices, infrastructure/DETR – Stanley P. Jones Bldg.

MEETS AGENCY LAND NEEDS (Y/N/STRATEGIC): Y

PERFORMING ASSET (Y/N/PARTIAL): Y

ISSUES/RESTRICTIONS: Leased to Clark County.

RECOMMENDATIONS: Retain for agency operations.