

HEALTH AND HUMAN SERVICES



HEALTH AND HUMAN SERVICES: NO. ADULT MENTAL HEALTH INSTITUTE HR-1

LOCATION: 480 Galletti Way, Sparks, Washoe County

ACRES: 79.57

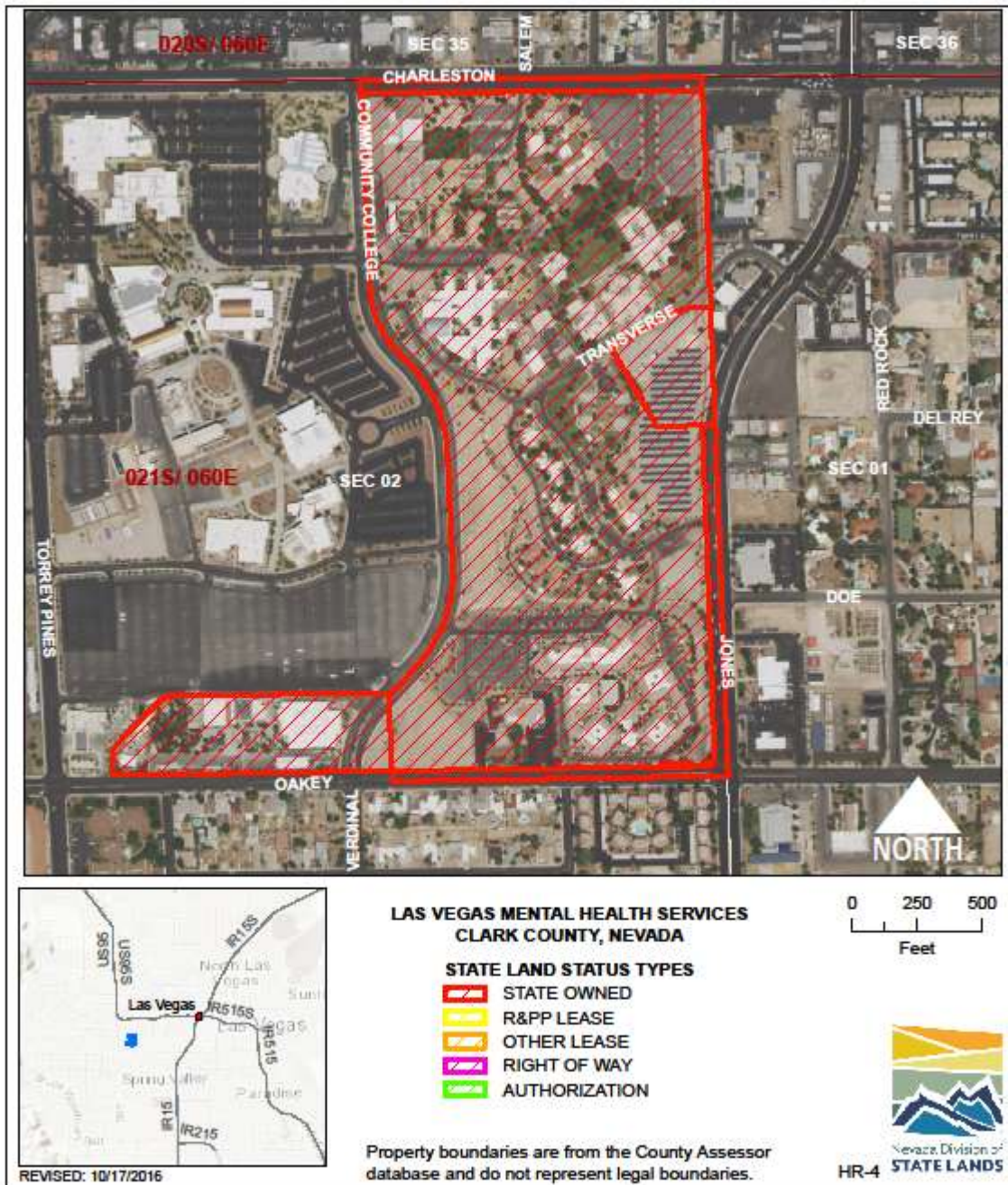
USE/AGENCY: Offices, residences, adult mental health support/HHS

MEETS AGENCY LAND NEEDS (Y/N/STRATEGIC): Y

PERFORMING ASSET (Y/N/PARTIAL): Y

ISSUES/RESTRICTIONS:

RECOMMENDATIONS: Retain for agency operations.



HEALTH AND HUMAN SERVICES: MENTAL HEALTH COMPLEX HR-4

LOCATION: 1650 Community College Drive, Las Vegas, Clark County

ACRES: 80.74

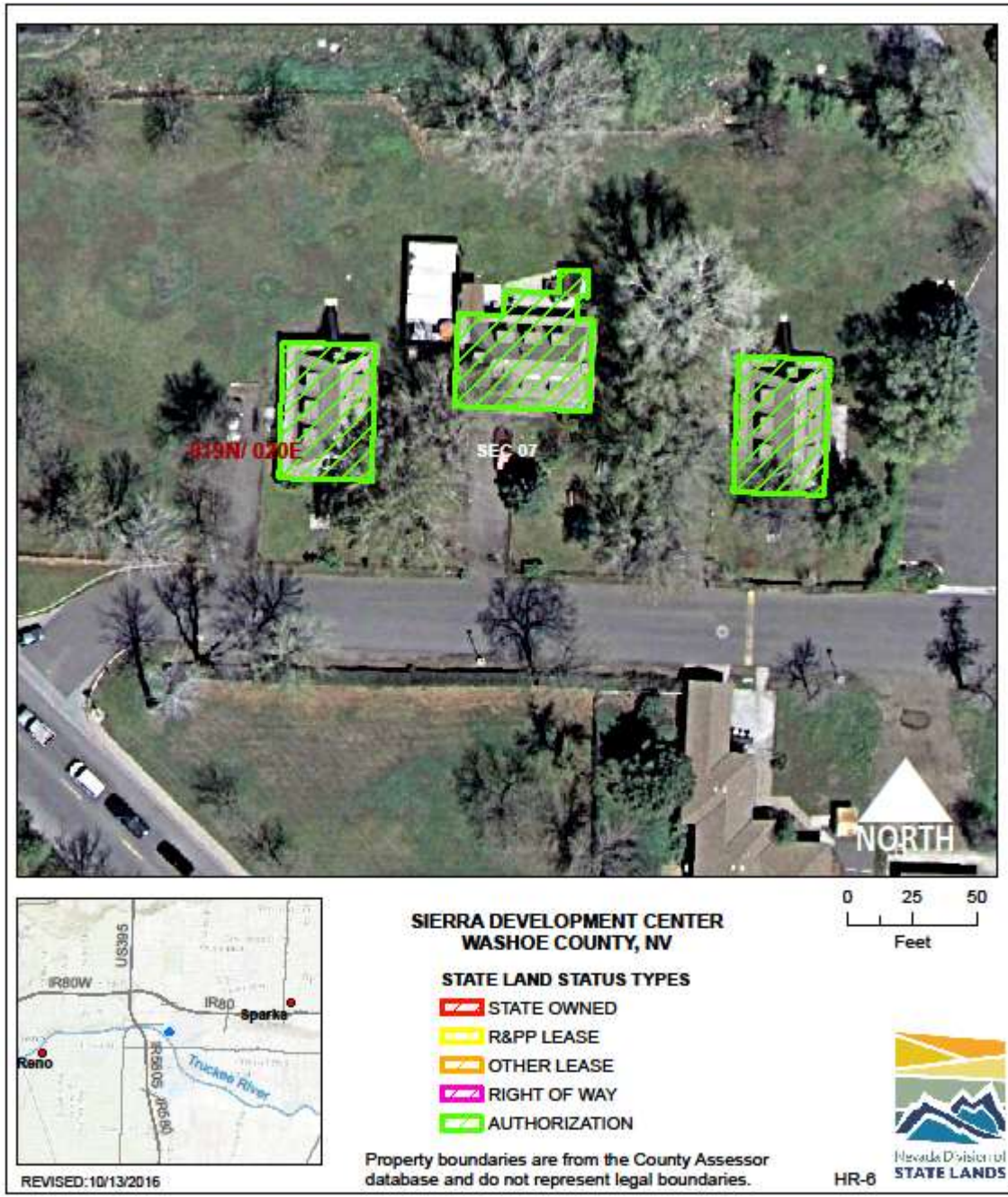
USE/AGENCY: Offices, residences, support/HHS

MEETS AGENCY LAND NEEDS (Y/N/STRATEGIC): Y

PERFORMING ASSET (Y/N/PARTIAL): Y

ISSUES/RESTRICTIONS:

RECOMMENDATIONS: Retain for agency operations.



HEALTH AND HUMAN SERVICES: SIERRA DEVELOPMENT CENTER HR-6

LOCATION: 480 Galletti Way, Sparks, Washoe County

ACRES: part of NNAMHI

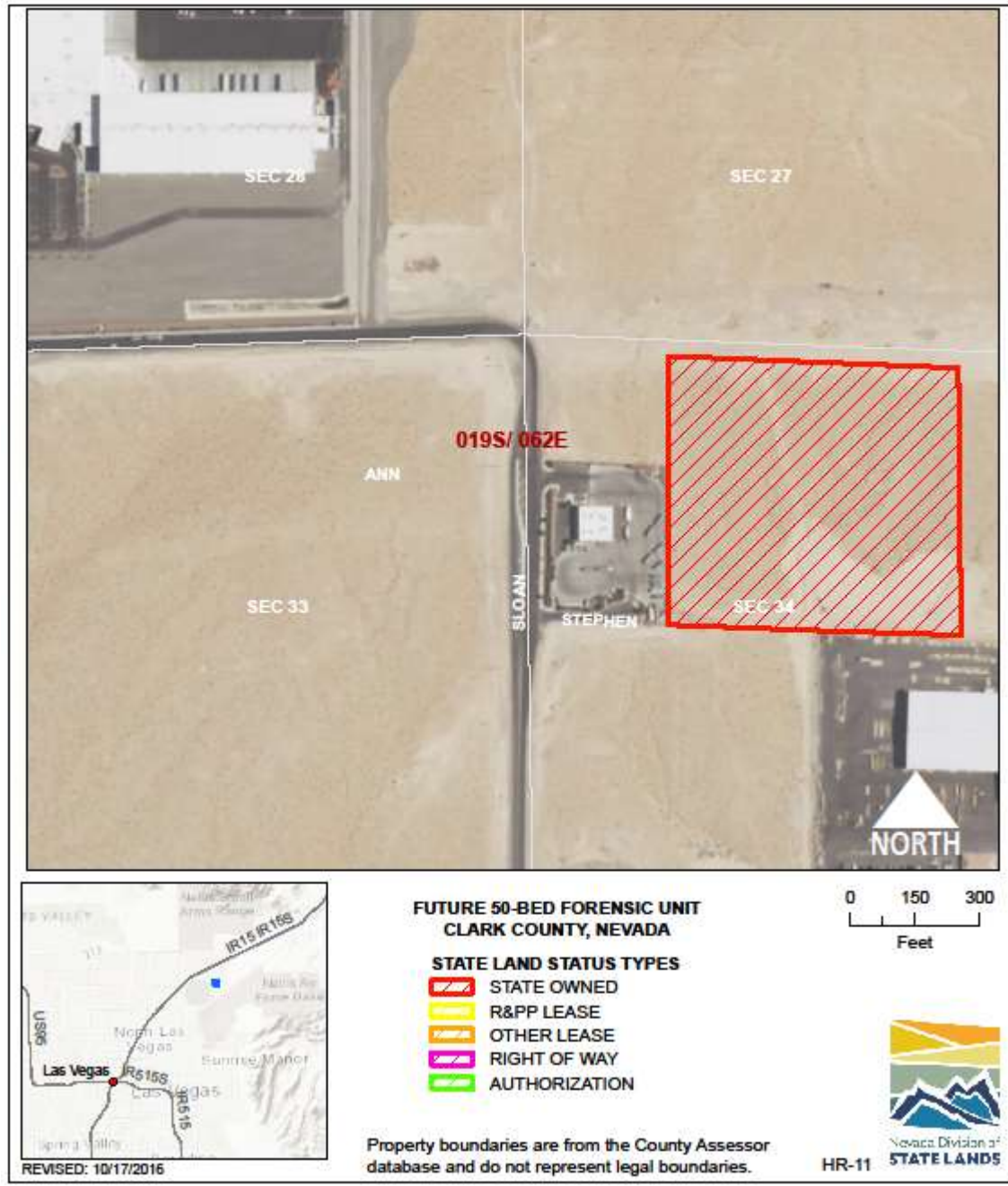
USE/AGENCY: Offices, residences, support/HHS

MEETS AGENCY LAND NEEDS (Y/N/STRATEGIC): Y

PERFORMING ASSET (Y/N/PARTIAL): Y

ISSUES/RESTRICTIONS:

RECOMMENDATIONS: Retain for agency operations.



HEALTH AND HUMAN SERVICES: 50 BED FACILITY HR-11
LOCATION: NE corner Sloan and Stephen, Las Vegas, Clark County
ACRES: 9.67
USE/AGENCY: Vacant/HHS
MEETS AGENCY LAND NEEDS (Y/N/STRATEGIC): S
PERFORMING ASSET (Y/N/PARTIAL): P
ISSUES/RESTRICTIONS:
RECOMMENDATIONS: Retain for agency operations.