

**MUSEUMS**



**MUSEUMS: NEVADA STATE MUSEUM MUS-1**

**LOCATION:** 600 North Carson Street, Carson City

**ACRES:** 1.79

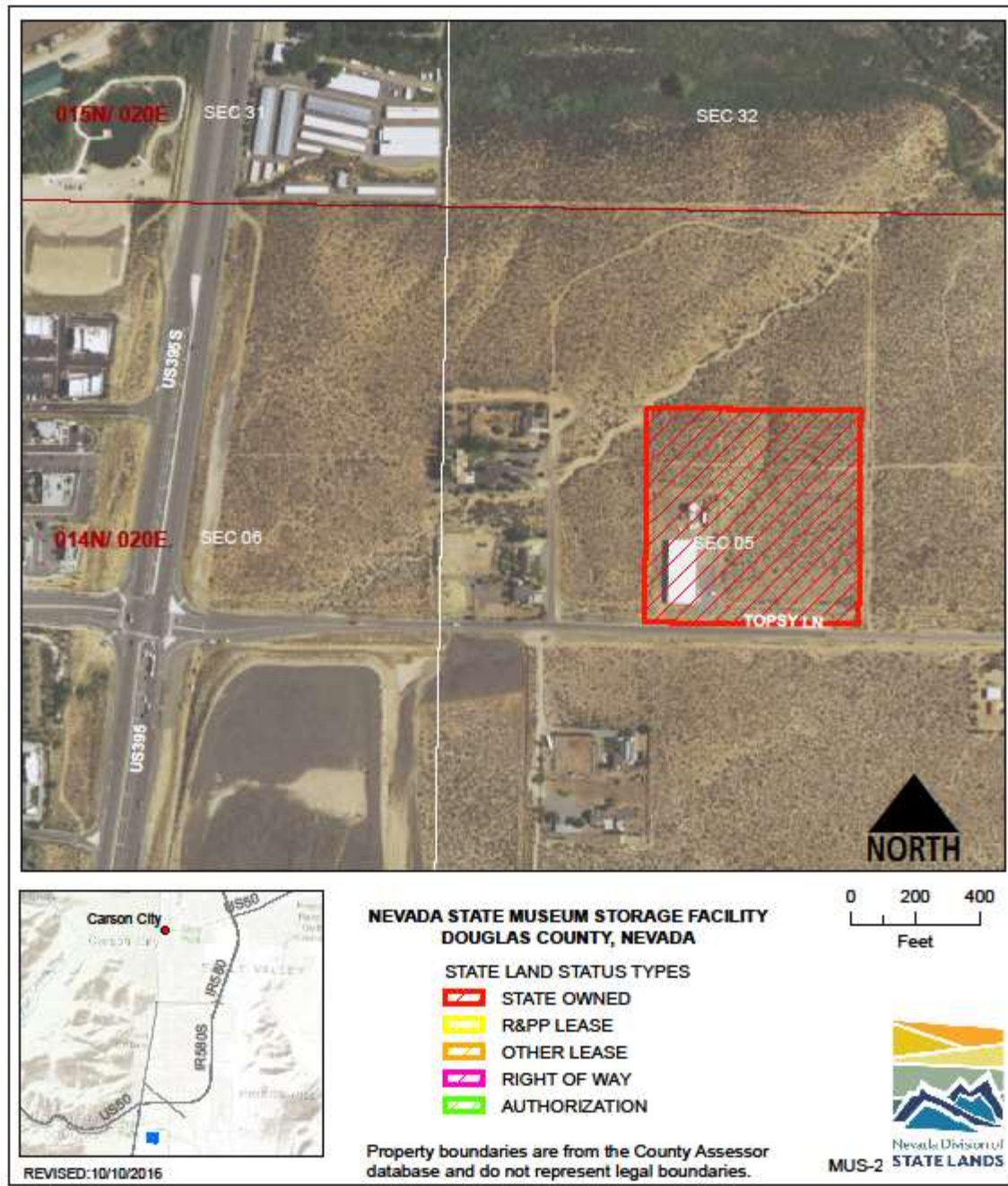
**USE/AGENCY:** Museum/Museums

**MEETS AGENCY LAND NEEDS (Y/N/STRATEGIC):** Y

**PERFORMING ASSET (Y/N/PARTIAL):** Y

**ISSUES/RESTRICTIONS:** Abandoned street easements.

**RECOMMENDATIONS:** Retain for agency operations.



**MUSEUMS: INDIAN HILLS STORAGE FACILITY MUS-2**  
**LOCATION: 2061 Topsy Lane, Indian Hills, Douglas County**  
**ACRES: 10.08**  
**USE/AGENCY: Storage/Museums**  
**MEETS AGENCY LAND NEEDS (Y/N/STRATEGIC): Y**  
**PERFORMING ASSET (Y/N/PARTIAL): Y**  
**ISSUES/RESTRICTIONS: R&PP patent.**  
**RECOMMENDATIONS: Retain for agency operations.**



**MUSEUMS: RAILROAD MUSEUM CARSON CITY MUS-3**

**LOCATION:** 2180 South Carson Street, Carson City

**ACRES:** 15.65

**USE/AGENCY:** Museum/Museums

**MEETS AGENCY LAND NEEDS (Y/N/STRATEGIC):** Y

**PERFORMING ASSET (Y/N/PARTIAL):** Y

**ISSUES/RESTRICTIONS:**

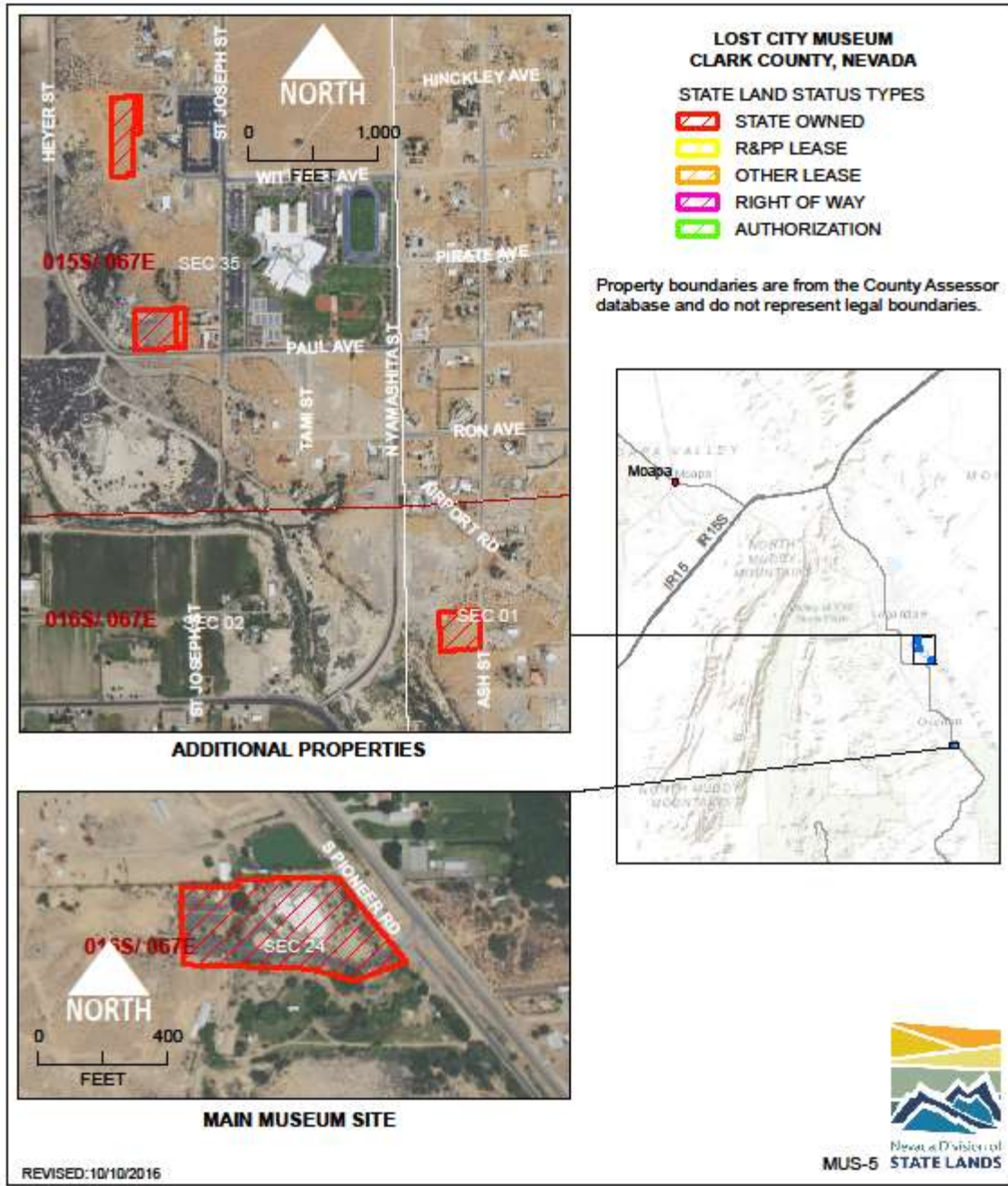
**RECOMMENDATIONS:** Retain for agency operations.



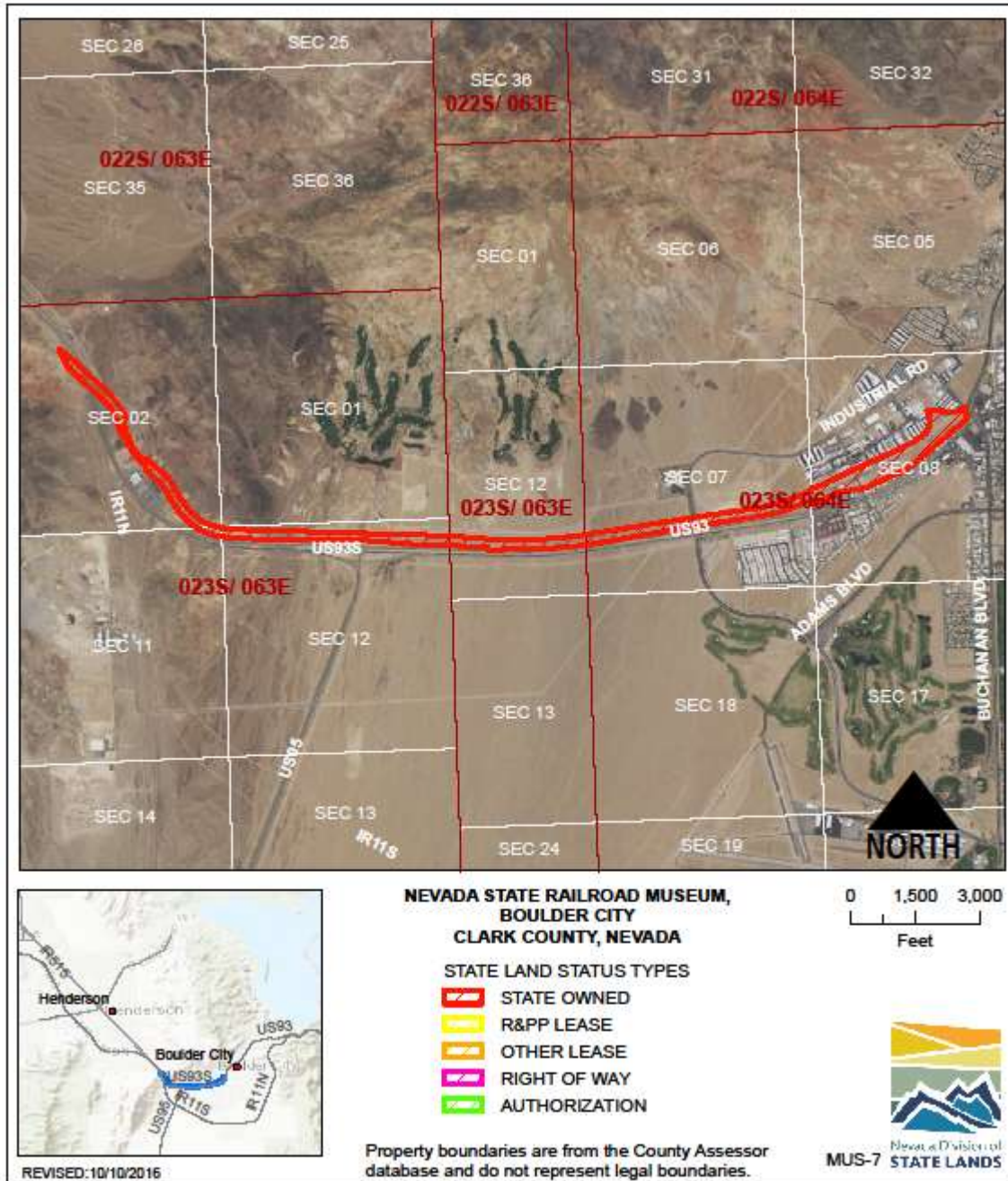
**MUSEUMS:** HISTORICAL SOCIETY MUS-4  
**LOCATION:** 1650 North Virginia Street, Reno, Washoe County  
**ACRES:** 1.38  
**USE/AGENCY:** Offices, museum/Museums  
**MEETS AGENCY LAND NEEDS (Y/N/STRATEGIC):** Y  
**PERFORMING ASSET (Y/N/PARTIAL):** Y  
**ISSUES/RESTRICTIONS:** Lease  
**RECOMMENDATIONS:** Retain for agency operations.



**MUSEUMS:** STATE MUSEUM LAS VEGAS MUS-5  
**LOCATION:** 309 South Valley View Blvd., Las Vegas, Clark County  
**ACRES:** 0.93  
**USE/AGENCY:** Offices, museum/Museums  
**MEETS AGENCY LAND NEEDS (Y/N/STRATEGIC):** Y  
**PERFORMING ASSET (Y/N/PARTIAL):** Y  
**ISSUES/RESTRICTIONS:** Other lease/agreement, expires 1/9/2105.  
**RECOMMENDATIONS:** Retain for agency operations.



**MUSEUMS:** LOST CITY MUSEUM MUS-6  
**LOCATION:** 721 S Moapa, Clark County  
**ACRES:** 11.40  
**USE/AGENCY:** Museum, offices, vacant/Museums  
**MEETS AGENCY LAND NEEDS (Y/N/STRATEGIC):** Y  
**PERFORMING ASSET (Y/N/PARTIAL):** Y  
**ISSUES/RESTRICTIONS:**  
**RECOMMENDATIONS:** Retain for agency operations.



**MUSEUMS: RAILROAD MUSEUM BOULDER CITY MUS-7**

**LOCATION: 600 Yucca Street, Boulder City, Clark County**

**ACRES: 128.14**

**USE/AGENCY: Museum/Museums**

**MEETS AGENCY LAND NEEDS (Y/N/STRATEGIC): Y**

**PERFORMING ASSET (Y/N/PARTIAL): Y**

**ISSUES/RESTRICTIONS: 0.94 acres excess land NW corner of US93 and Buchanan is a r-o-w, land owned by Boulder City, envisioned for possible State acquisition for future RR museum.**

**RECOMMENDATIONS: Retain for agency operations.**



**MUSEUMS:** RAILROAD DEPOT ELY MUS-8  
**LOCATION:** 1100 Avenue A, Ely, White Pine County  
**ACRES:** 0.82  
**USE/AGENCY:** Museum, offices/Museums  
**MEETS AGENCY LAND NEEDS (Y/N/STRATEGIC):** Y  
**PERFORMING ASSET (Y/N/PARTIAL):** Y  
**ISSUES/RESTRICTIONS:** Historic structure.  
**RECOMMENDATIONS:** Retain for agency operations.





**MUSEUMS:** COOPERATIVE LIBRARY SERVICES LIBR-2

**LOCATION:** 2351 Arrowhead Drive, Carson City

**ACRES:** 0.81

**USE/AGENCY:** Vacant structures/Library

**MEETS AGENCY LAND NEEDS (Y/N/STRATEGIC):** Y

**PERFORMING ASSET (Y/N/PARTIAL):** Y

**ISSUES/RESTRICTIONS:** Lease expires 8/31/2067.

**RECOMMENDATIONS:** Retain for agency operations.