



WILDLIFE: NEW ELY FIELD OFFICE WL-76

LOCATION: Ely, White Pine County

ACRES: 2.52

USE/AGENCY: NDOW

MEETS AGENCY LAND NEEDS (Y/N/STRATEGIC): Y

PERFORMING ASSET (Y/N/PARTIAL): Y

ISSUES/RESTRICTIONS: R&PP patent.

RECOMMENDATIONS: Retain for agency operations.



WILDLIFE: BARLOW HOLDING POND WL-81

LOCATION: Walker Lake, Mineral County

ACRES: 0.10

USE/AGENCY: NDOW

MEETS AGENCY LAND NEEDS (Y/N/STRATEGIC): S

PERFORMING ASSET (Y/N/PARTIAL): P

ISSUES/RESTRICTIONS: Fish stocking agreement for Walker Lake has expired, renew?

RECOMMENDATIONS: Retain for agency operations.



WILDLIFE: PARADISE VALLEY CHECKING STATION WL-82

LOCATION: Humboldt County

ACRES: 30' WIDE TURNOUT 0.25 Acres

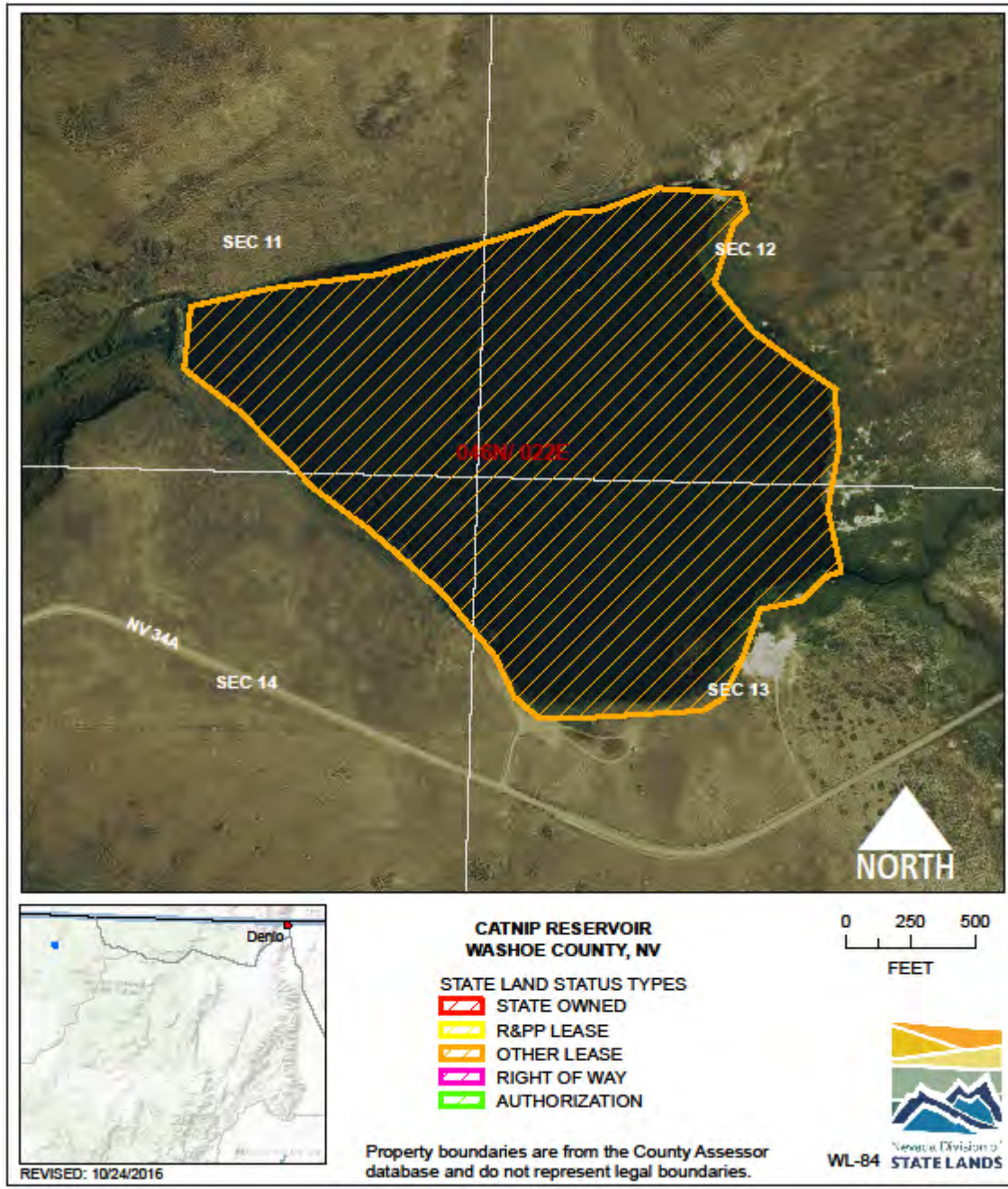
USE/AGENCY: NDOW

MEETS AGENCY LAND NEEDS (Y/N/STRATEGIC): N

PERFORMING ASSET (Y/N/PARTIAL): N

ISSUES/RESTRICTIONS: Lease, no expiration.

RECOMMENDATIONS: Potential disposal.



WILDLIFE: CATNIP RESERVOIR WL-84

LOCATION: Sheldon, Washoe County

ACRES: 73.94

USE/AGENCY: NDOW

MEETS AGENCY LAND NEEDS (Y/N/STRATEGIC): Y

PERFORMING ASSET (Y/N/PARTIAL): Y

ISSUES/RESTRICTIONS: Stocking agreement, no expiration.

RECOMMENDATIONS: Retain for agency operations.



WILDLIFE: GERLACH HUNTER CHECK WL-85

LOCATION: Gerlach, Washoe County

ACRES: 0.28

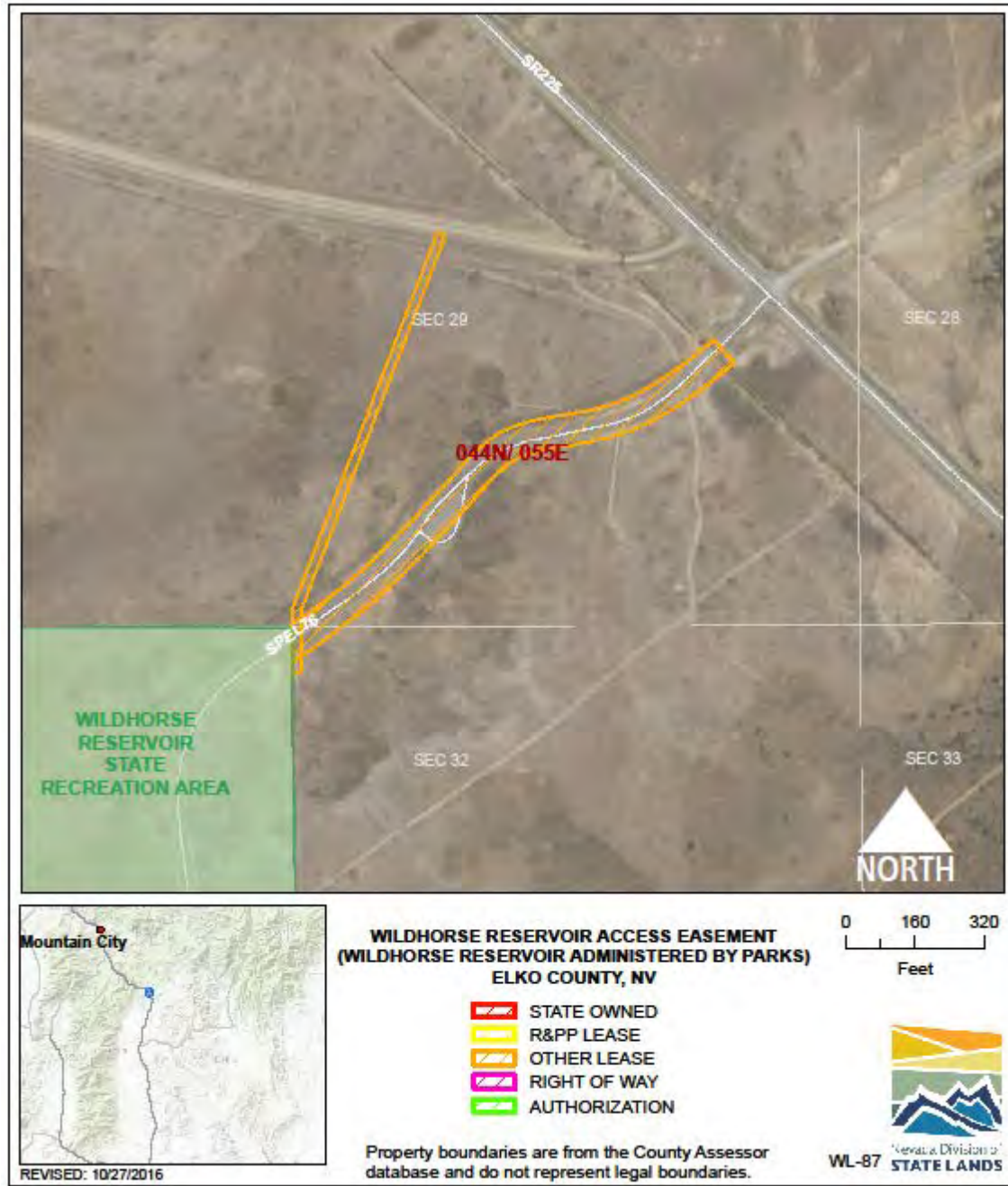
USE/AGENCY: NDOW

MEETS AGENCY LAND NEEDS (Y/N/STRATEGIC): Y

PERFORMING ASSET (Y/N/PARTIAL): Y

ISSUES/RESTRICTIONS: Lease, no expiration.

RECOMMENDATIONS: Retain for agency operations.



WILDLIFE: WILDHORSE RESERVOIR ACCESS WL-87

LOCATION: Elko County

ACRES: 2.54

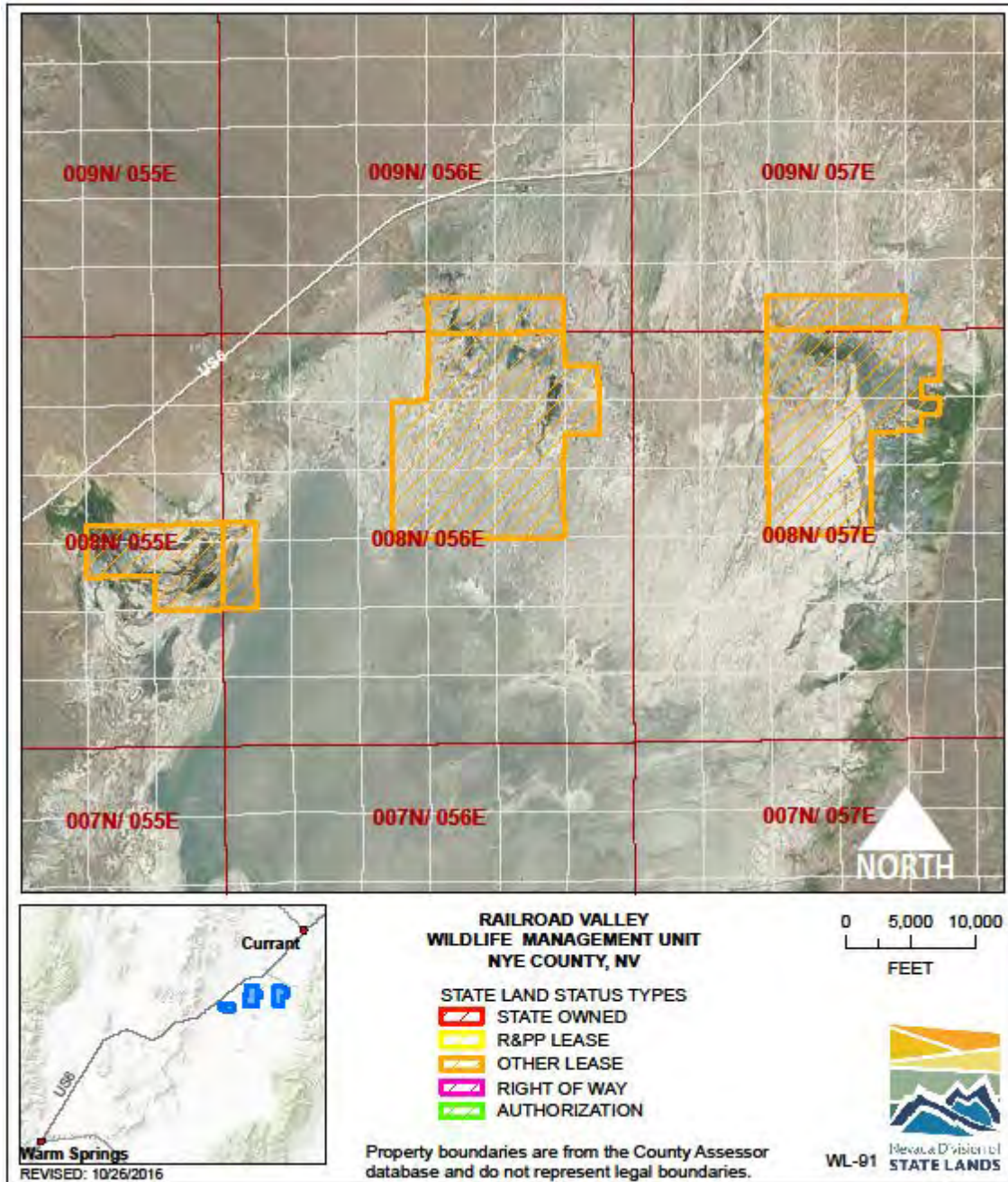
USE/AGENCY: NDOW

MEETS AGENCY LAND NEEDS (Y/N/STRATEGIC): Y

PERFORMING ASSET (Y/N/PARTIAL): Y

ISSUES/RESTRICTIONS: BLM R/W renewed to 12/31/2041.

RECOMMENDATIONS: Retain for agency operations.



WILDLIFE: RAILROAD VALLEY WL-91

LOCATION: Nye County

ACRES: 11,563.15

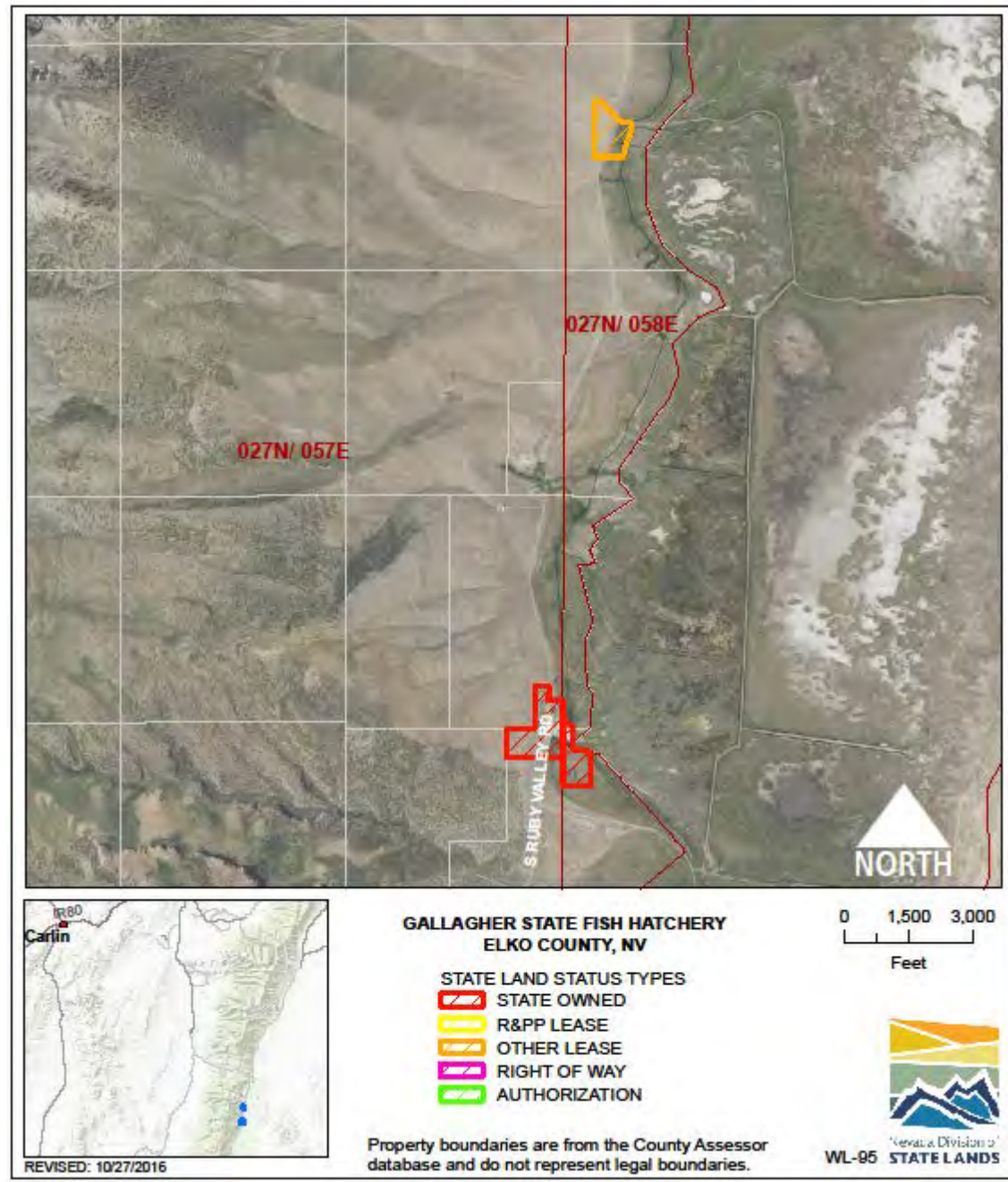
USE/AGENCY: NDOW

MEETS AGENCY LAND NEEDS (Y/N/STRATEGIC): Y

PERFORMING ASSET (Y/N/PARTIAL): Y

ISSUES/RESTRICTIONS:

RECOMMENDATIONS: Retain for agency operations.



WILDLIFE: GALLAGHER STATE FISH HATCHERY WL-95

LOCATION: Elko County

ACRES: 67.64

USE/AGENCY: NDOW

MEETS AGENCY LAND NEEDS (Y/N/STRATEGIC): Y

PERFORMING ASSET (Y/N/PARTIAL): Y

ISSUES/RESTRICTIONS: US Fish and Wildlife Service cooperative agreement to be re-evaluated - 8/1/2020.

RECOMMENDATIONS: Retain for agency operations.



WILDLIFE: OLD ELY FIELD OFFICE WL-97

LOCATION: Ely, White Pine County

ACRES: 0.92

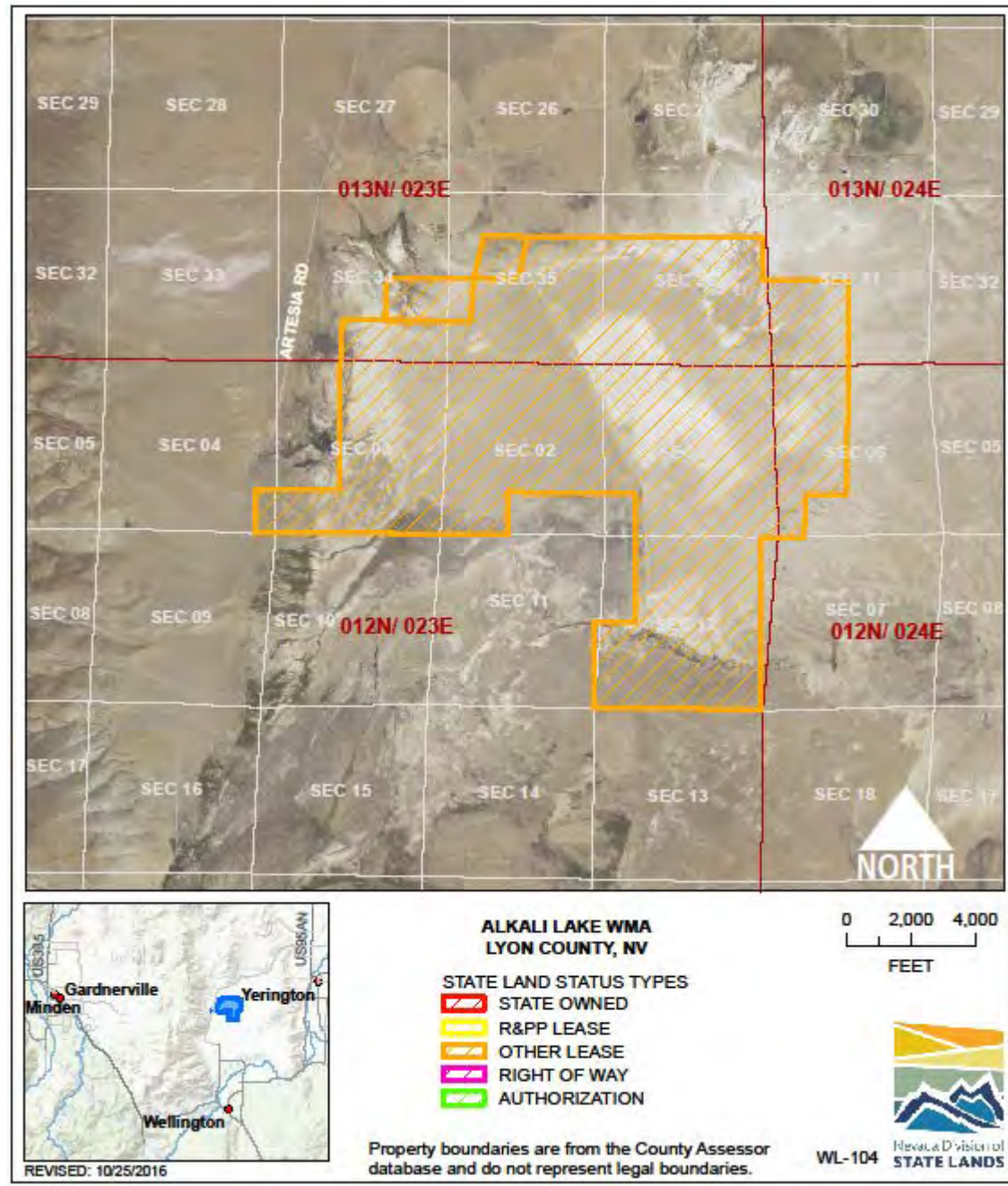
USE/AGENCY: NDOW

MEETS AGENCY LAND NEEDS (Y/N/STRATEGIC): S

PERFORMING ASSET (Y/N/PARTIAL): P

ISSUES/RESTRICTIONS: Lease expires 6/27/2053.

RECOMMENDATIONS: Storage only but retain for future agency operations.



WILDLIFE: ALKALAI LAKE WMA WL-104

LOCATION: Lyon County

ACRES: 3,573.50

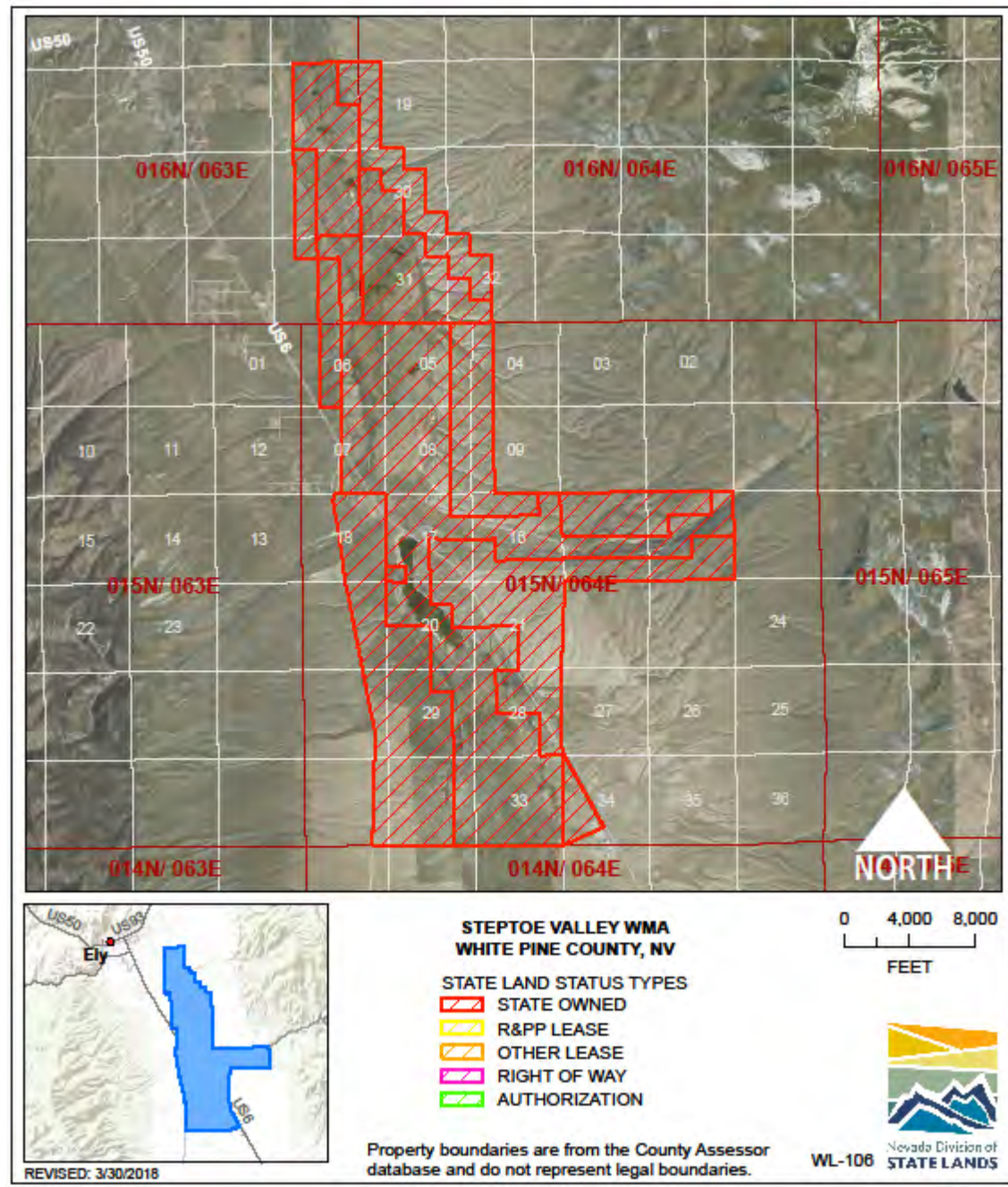
USE/AGENCY: NDOW

MEETS AGENCY LAND NEEDS (Y/N/STRATEGIC): Y

PERFORMING ASSET (Y/N/PARTIAL): Y

ISSUES/RESTRICTIONS: BLM cooperative agreement, no expiration.

RECOMMENDATIONS: Retain for agency operations.



WILDLIFE: STEPTOE WMA WL-106

LOCATION: White Pine County

ACRES: 12,806.39

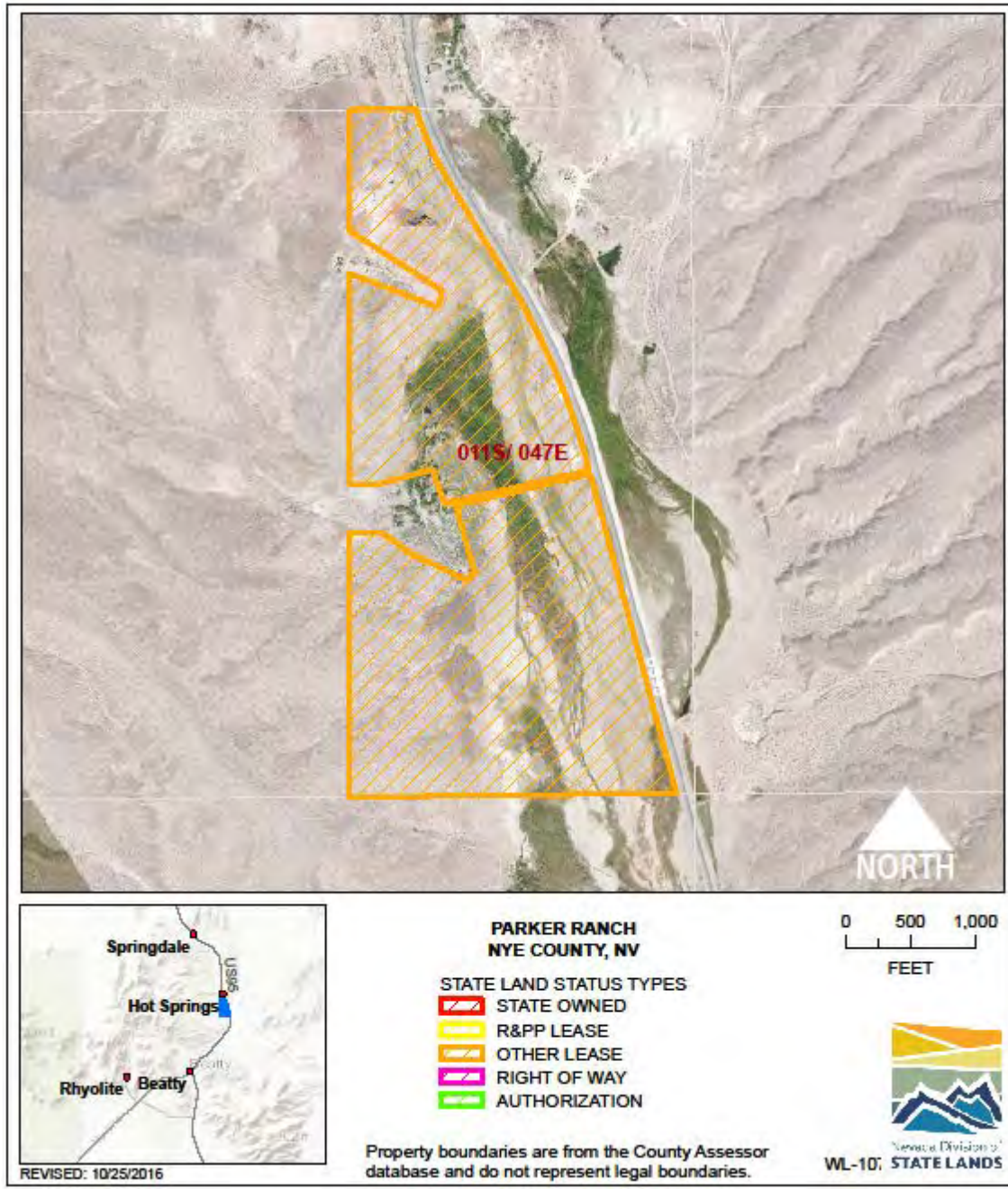
USE/AGENCY: NDOW

MEETS AGENCY LAND NEEDS (Y/N/STRATEGIC): Y

PERFORMING ASSET (Y/N/PARTIAL): Y

ISSUES/RESTRICTIONS:

RECOMMENDATIONS: Retain for agency operations.



WILDLIFE: PARKER RANCH WL-107

LOCATION: Nye County

ACRES: 190.13

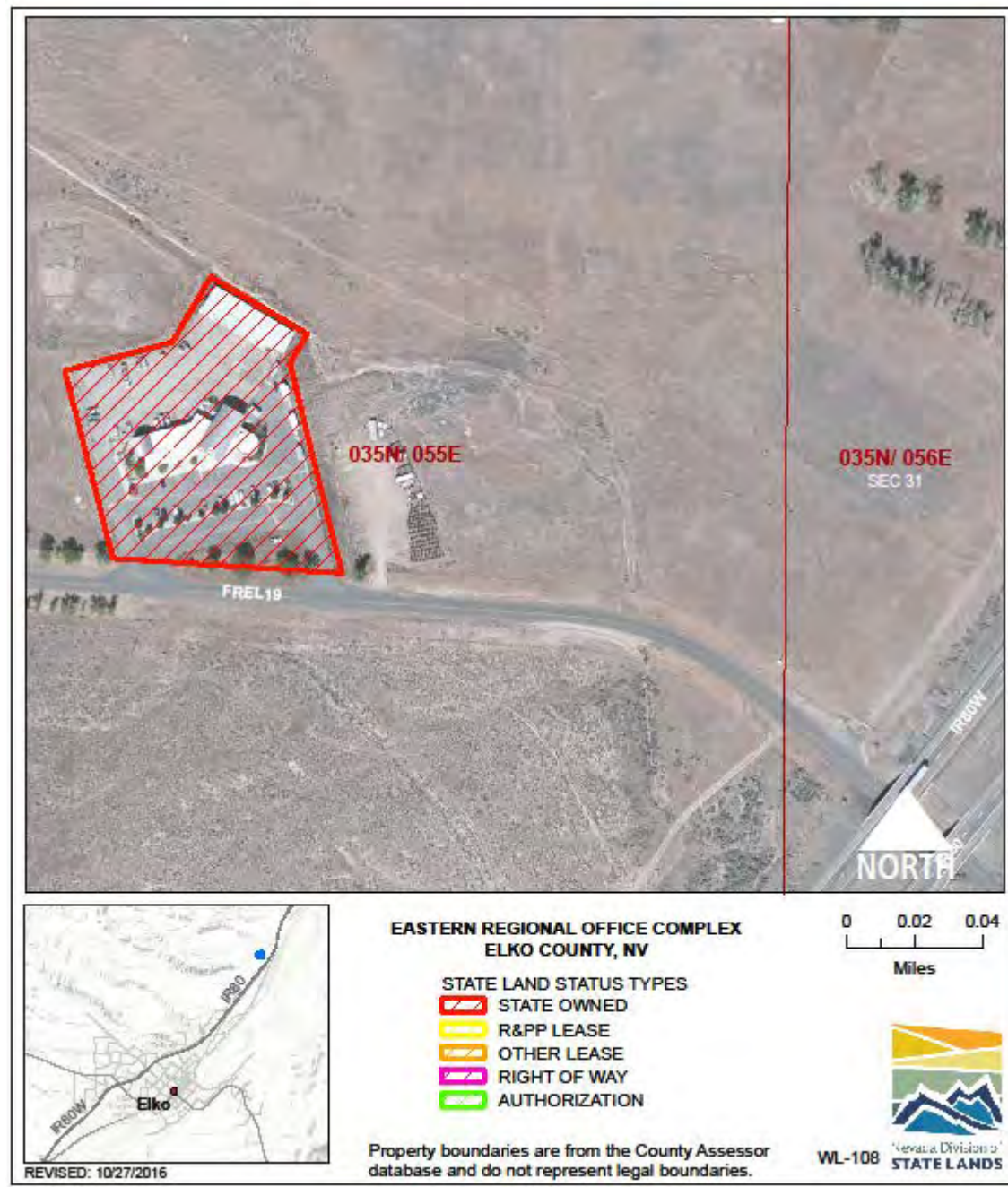
USE/AGENCY: NDOW

MEETS AGENCY LAND NEEDS (Y/N/STRATEGIC): Y

PERFORMING ASSET (Y/N/PARTIAL): Y

ISSUES/RESTRICTIONS: Partial interest held, owned by the Nature Conservancy, no expiration.

RECOMMENDATIONS: Retain for agency operations.



WILDLIFE: EASTERN REG FIELD OFFICE WL-108

LOCATION: Elko, Elko County

ACRES: 2.98

USE/AGENCY: NDOW

MEETS AGENCY LAND NEEDS (Y/N/STRATEGIC): Y

PERFORMING ASSET (Y/N/PARTIAL): Y

ISSUES/RESTRICTIONS:

RECOMMENDATIONS: Retain for agency operations.



WILDLIFE: CARLIN ICE WL-111

LOCATION: Carlin, Elko, Elko County

ACRES: Water Rights only, no acreage

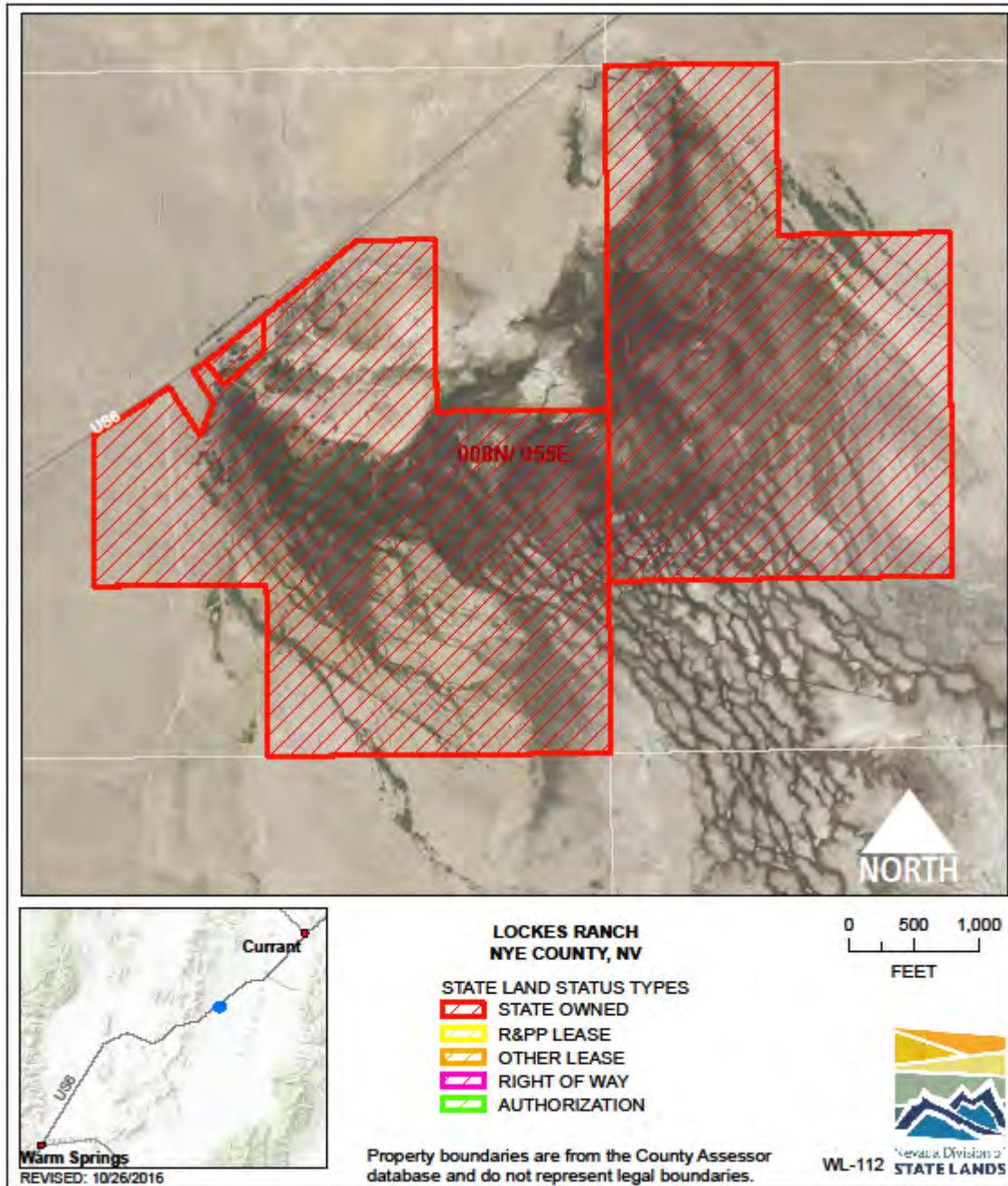
USE/AGENCY: NDOW

MEETS AGENCY LAND NEEDS (Y/N/STRATEGIC): Y

PERFORMING ASSET (Y/N/PARTIAL): Y

ISSUES/RESTRICTIONS: State owns water rights only, 1,680 ac/ft.

RECOMMENDATIONS: Retain for agency operations.



WILDLIFE: LOCKES RANCH WL-112

LOCATION: Curren, Nye County

ACRES: 442.31

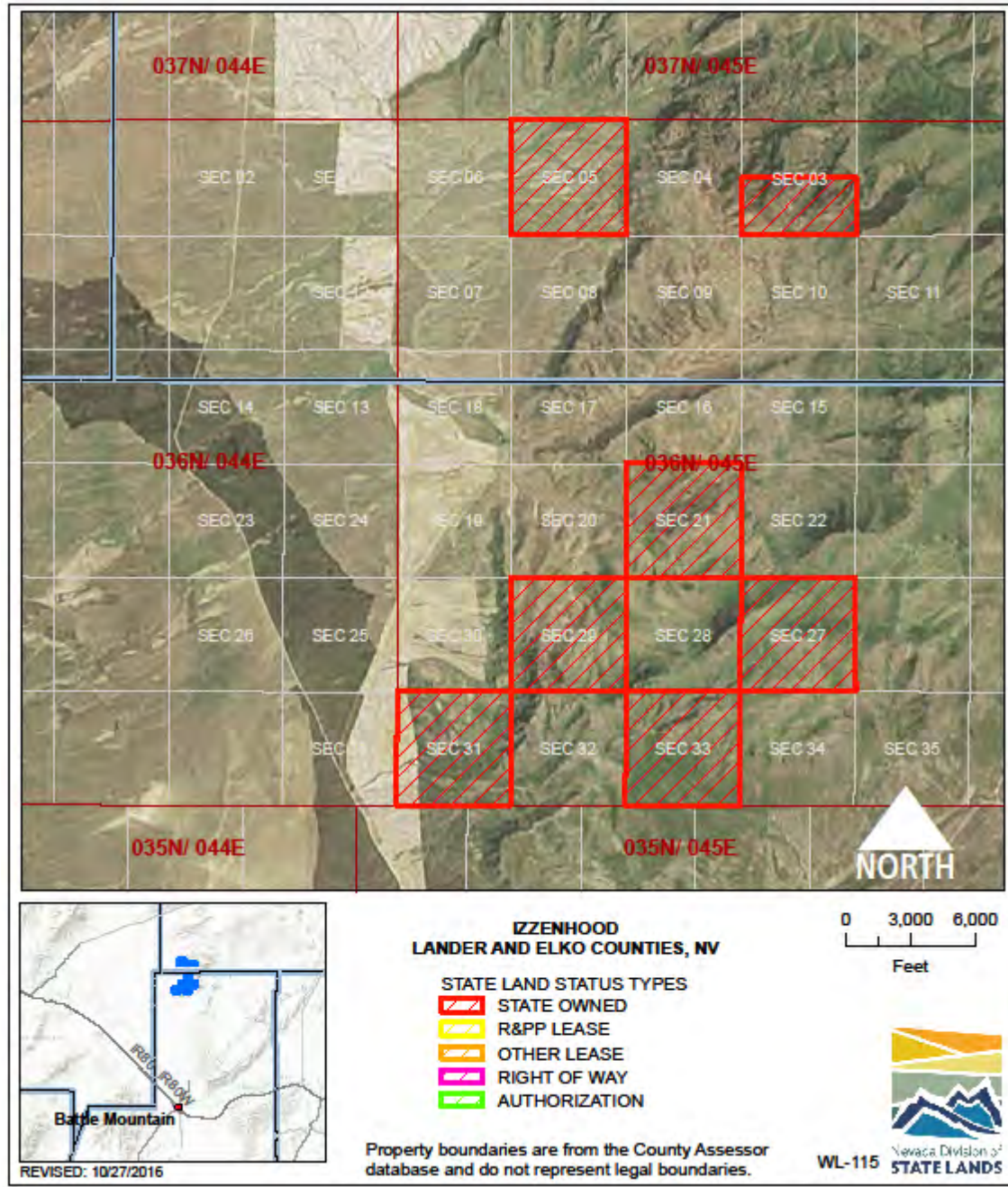
USE/AGENCY: NDOW

MEETS AGENCY LAND NEEDS (Y/N/STRATEGIC): Y

PERFORMING ASSET (Y/N/PARTIAL): Y

ISSUES/RESTRICTIONS:

RECOMMENDATIONS: Retain for agency operations.



WILDLIFE: IZZENHOOD RANCH WL-115

LOCATION: Elko/Lander Counties

ACRES: 4,196.36

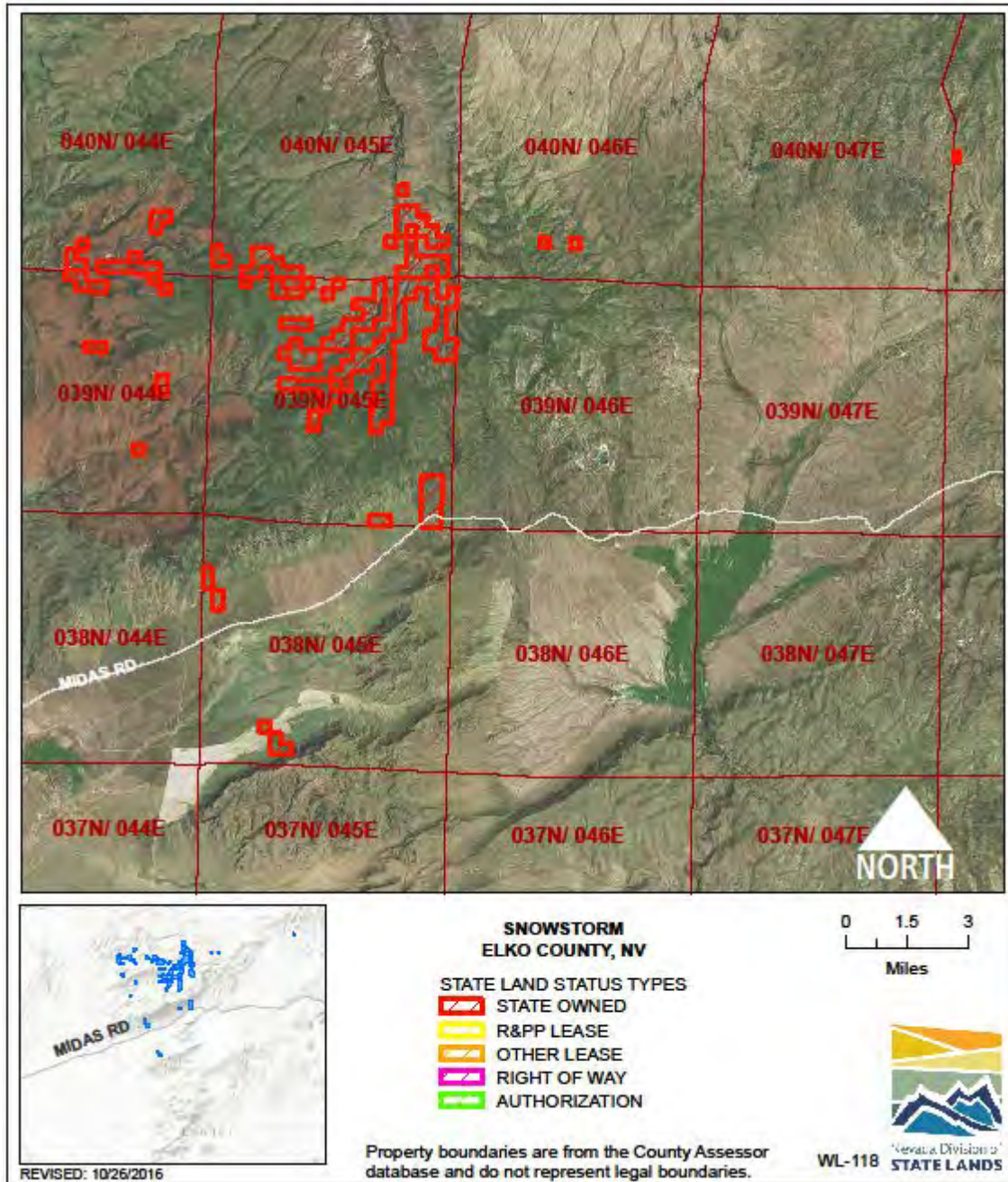
USE/AGENCY: NDOW

MEETS AGENCY LAND NEEDS (Y/N/STRATEGIC): Y

PERFORMING ASSET (Y/N/PARTIAL): Y

ISSUES/RESTRICTIONS:

RECOMMENDATIONS: Retain for agency operations.



WILDLIFE: SNOWSTORM WL-118

LOCATION: Elko County

ACRES: 7,239.14

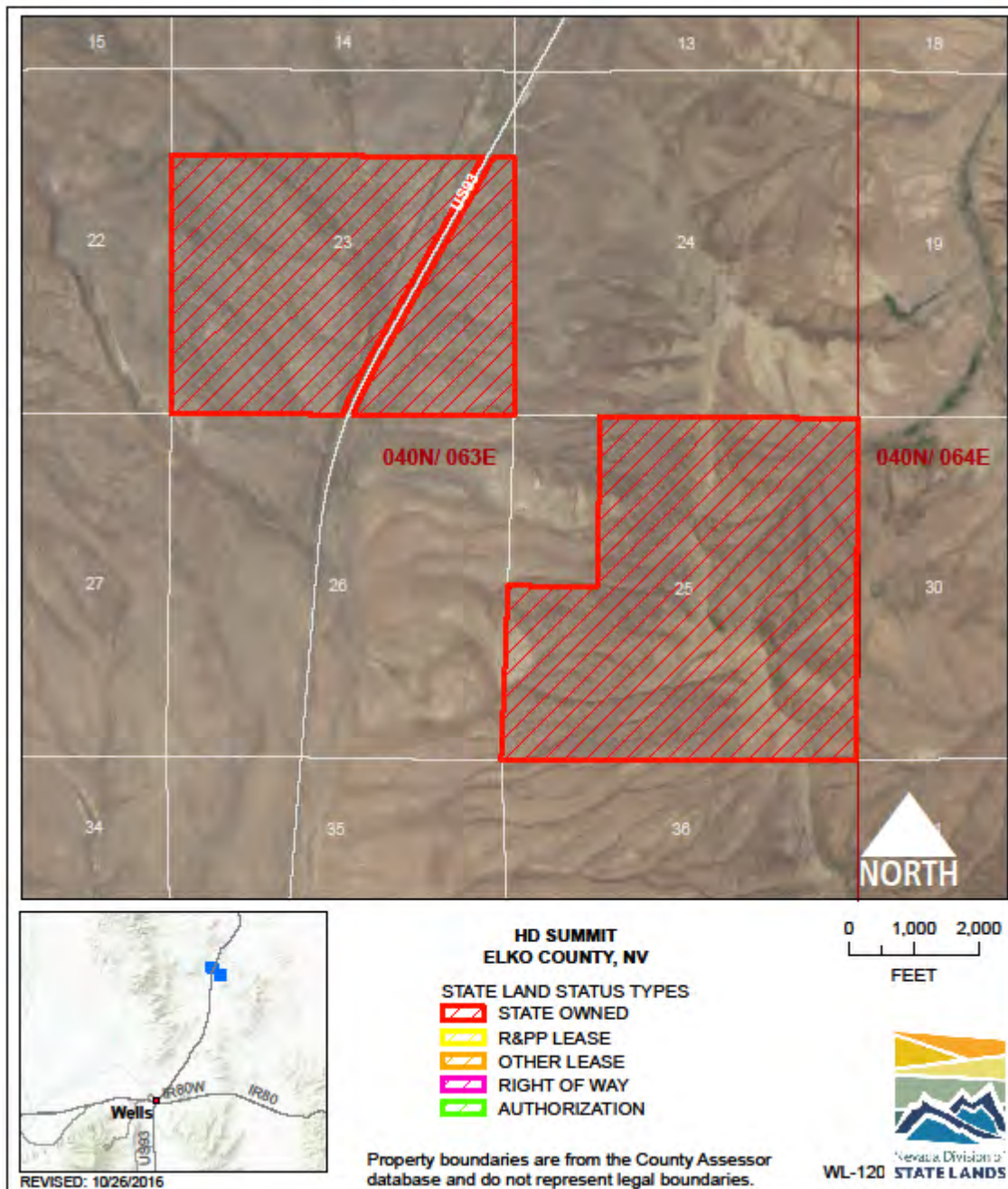
USE/AGENCY: NDOW

MEETS AGENCY LAND NEEDS (Y/N/STRATEGIC): Y

PERFORMING ASSET (Y/N/PARTIAL): Y

ISSUES/RESTRICTIONS:

RECOMMENDATIONS: Retain for agency operations.



WILDLIFE: HD SUMMIT PARCELS WL-120

LOCATION: Wells, Elko County

ACRES: 1,035.30

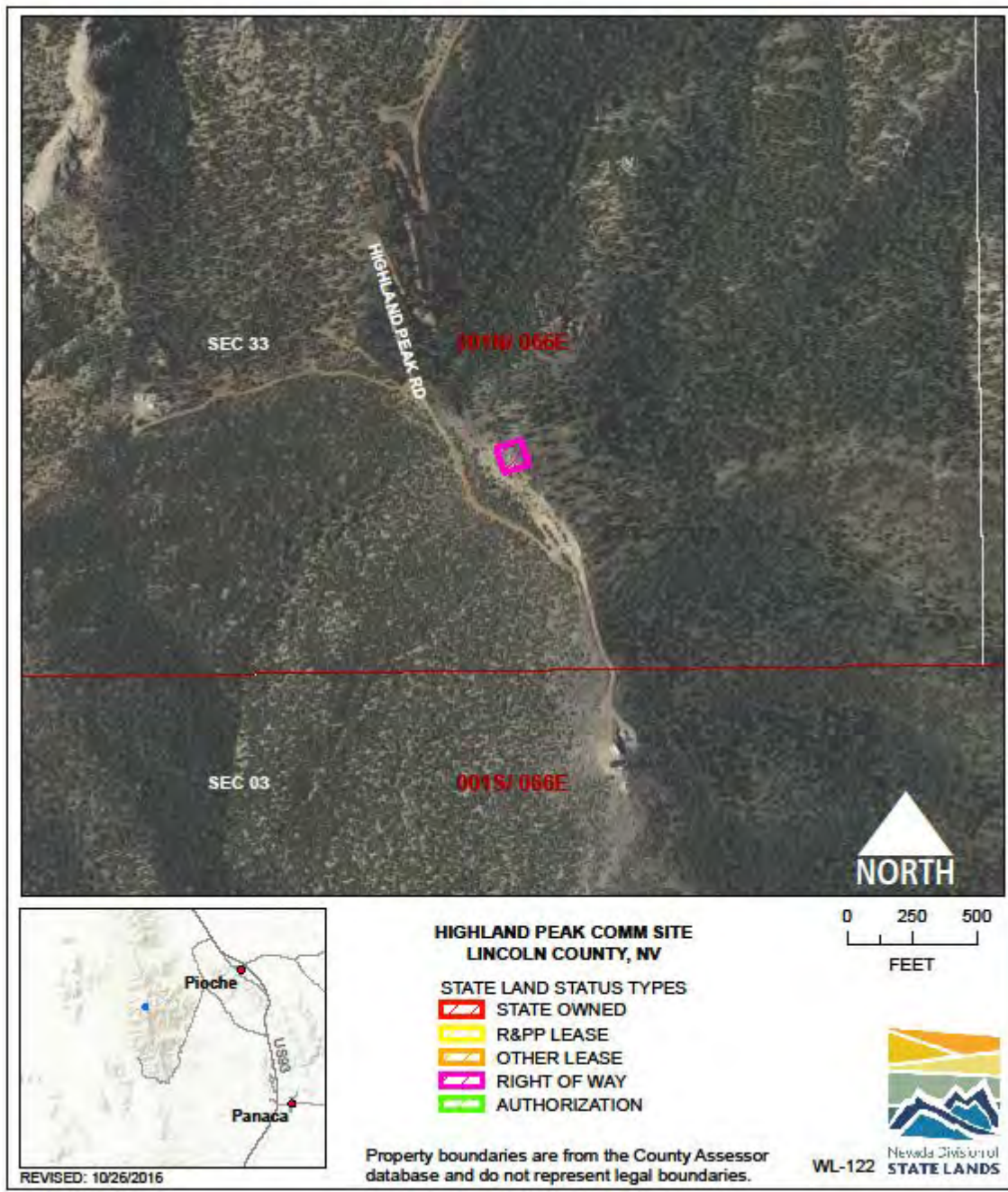
USE/AGENCY: NDOW

MEETS AGENCY LAND NEEDS (Y/N/STRATEGIC): Y

PERFORMING ASSET (Y/N/PARTIAL): Y

ISSUES/RESTRICTIONS: Facilitates animal overpass.

RECOMMENDATIONS: Retain for agency operations.



WILDLIFE: HIGHLAND PEAK COMM SITE WL-122

LOCATION: Lincoln County

ACRES: 0.23

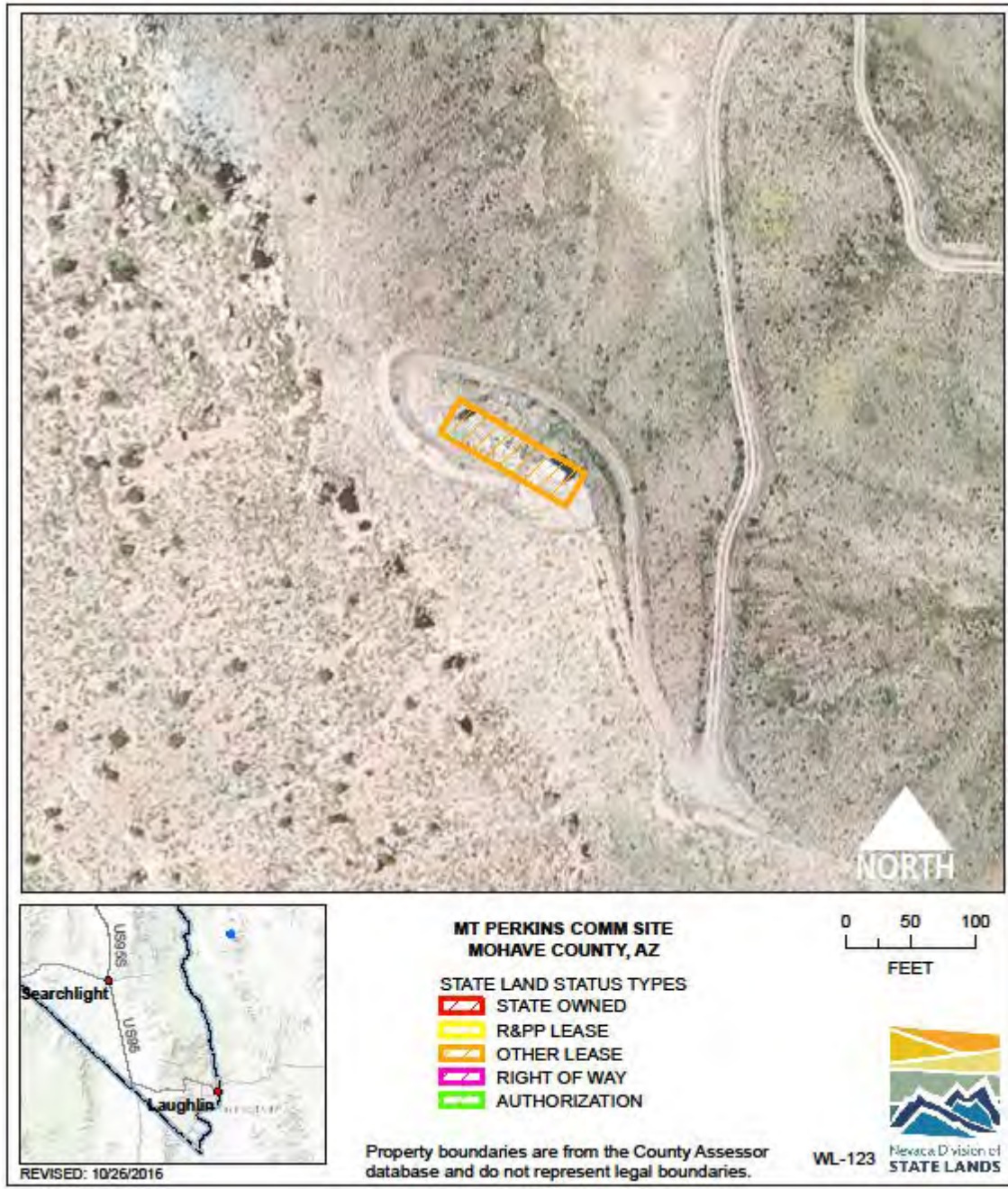
USE/AGENCY: NDOW

MEETS AGENCY LAND NEEDS (Y/N/STRATEGIC): Y

PERFORMING ASSET (Y/N/PARTIAL): Y

ISSUES/RESTRICTIONS: Access right-of-way.

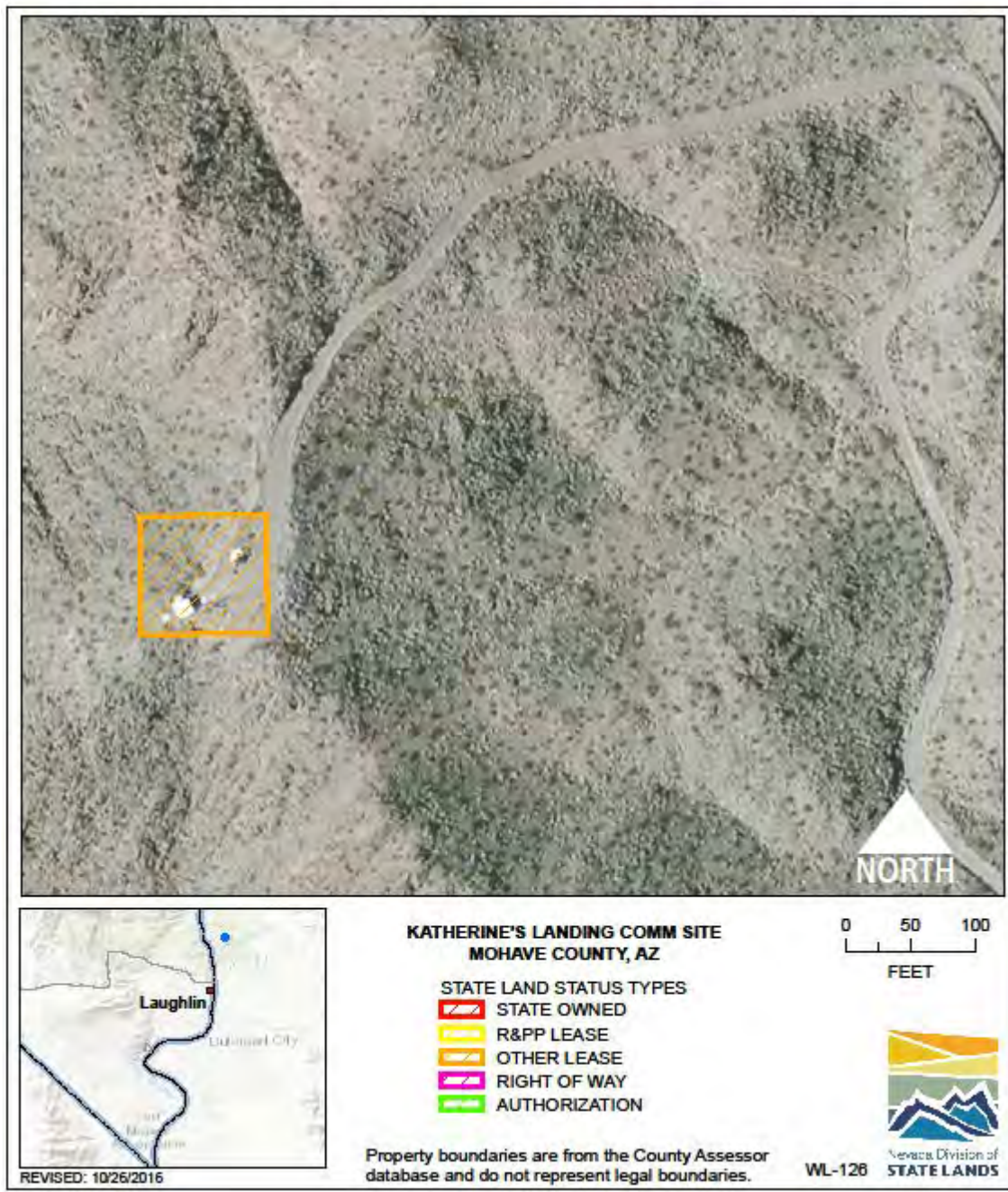
RECOMMENDATIONS: Retain for agency operations.



WILDLIFE: MT PERKINS COMM SITE WL-123
LOCATION: Mohave County, Arizona
ACRES: 0.08
USE/AGENCY: NDOW
MEETS AGENCY LAND NEEDS (Y/N/STRATEGIC): S
PERFORMING ASSET (Y/N/PARTIAL): P
ISSUES/RESTRICTIONS: Site is vacant.
RECOMMENDATIONS: Retain for agency operations.



WILDLIFE: SNOW VALEY PEAK COMM SITE WL-124
LOCATION: Carson City
ACRES: 0.01
USE/AGENCY: NDOW
MEETS AGENCY LAND NEEDS (Y/N/STRATEGIC): Y
PERFORMING ASSET (Y/N/PARTIAL): Y
ISSUES/RESTRICTIONS: 10-year Carson City agreement.
RECOMMENDATIONS: Retain for agency operations.



WILDLIFE: KATHERINE'S LANDING COMM SITE WL-126

LOCATION: Mohave County, Arizona

ACRES: 0.21

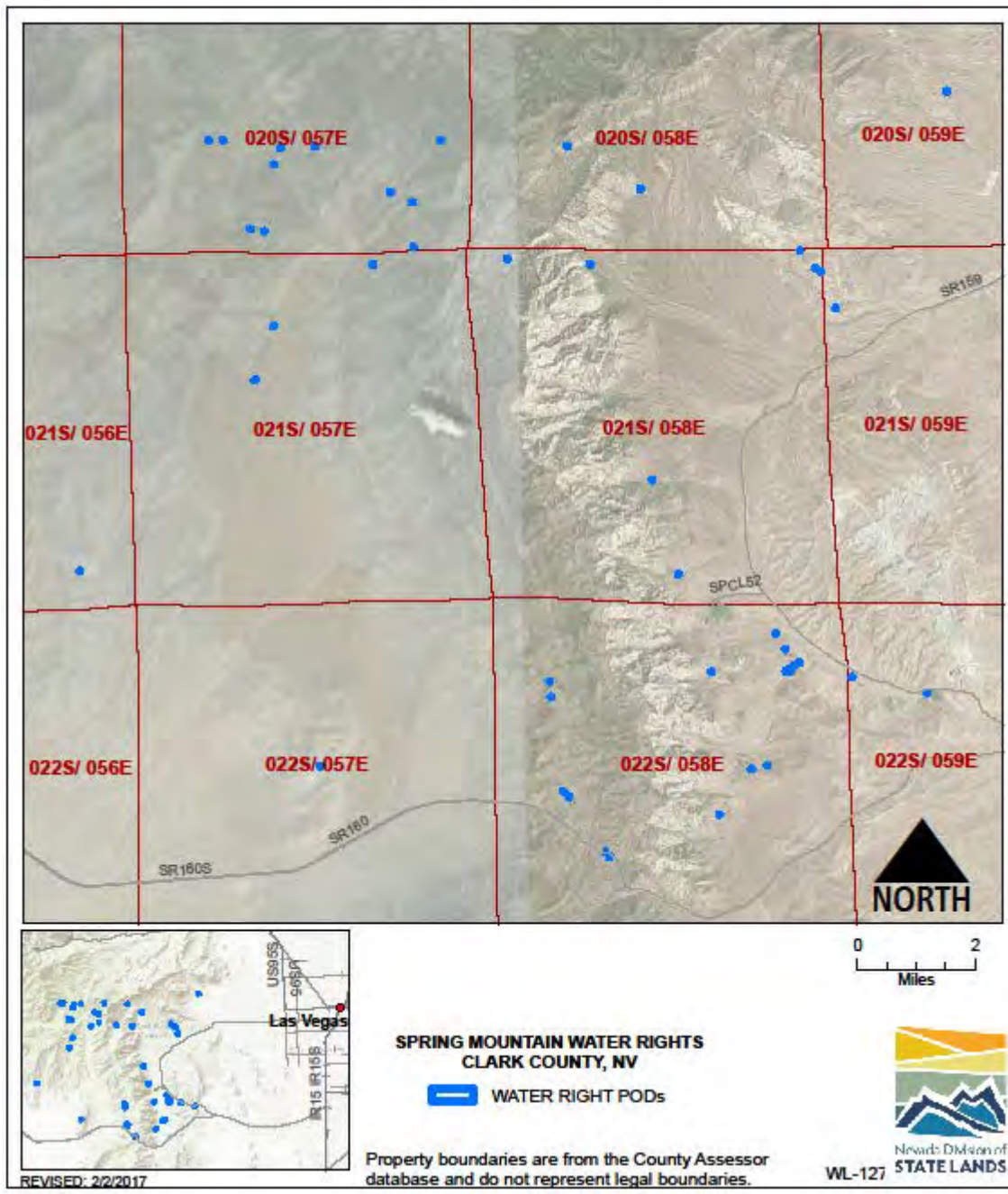
USE/AGENCY: NDOW

MEETS AGENCY LAND NEEDS (Y/N/STRATEGIC): Y

PERFORMING ASSET (Y/N/PARTIAL): Y

ISSUES/RESTRICTIONS: 20-year license with National Park Service.

RECOMMENDATIONS: Retain for agency operations.



WILDLIFE: SPRING MT WATER RIGHTS WL-127

LOCATION: Clark County

ACRES: Water rights only. No acreage

USE/AGENCY: NDOW

MEETS AGENCY LAND NEEDS (Y/N/STRATEGIC): Y

PERFORMING ASSET (Y/N/PARTIAL): Y

ISSUES/RESTRICTIONS:

RECOMMENDATIONS: Retain for agency operations.



WILDLIFE: SILVER LAKE WL-128

LOCATION: Washoe County

ACRES: 66.45

USE/AGENCY: NDOW

MEETS AGENCY LAND NEEDS (Y/N/STRATEGIC): Y

PERFORMING ASSET (Y/N/PARTIAL): Y

ISSUES/RESTRICTIONS: Acquisition of 67.4 acres in partnership with Washoe County – deed restriction.

RECOMMENDATIONS: Retain for agency operations.



WILDLIFE: WINNEMUCCA MT BLM LAND WL 130

LOCATION: NW of Winnemucca, Humboldt County

ACRES: 0.23

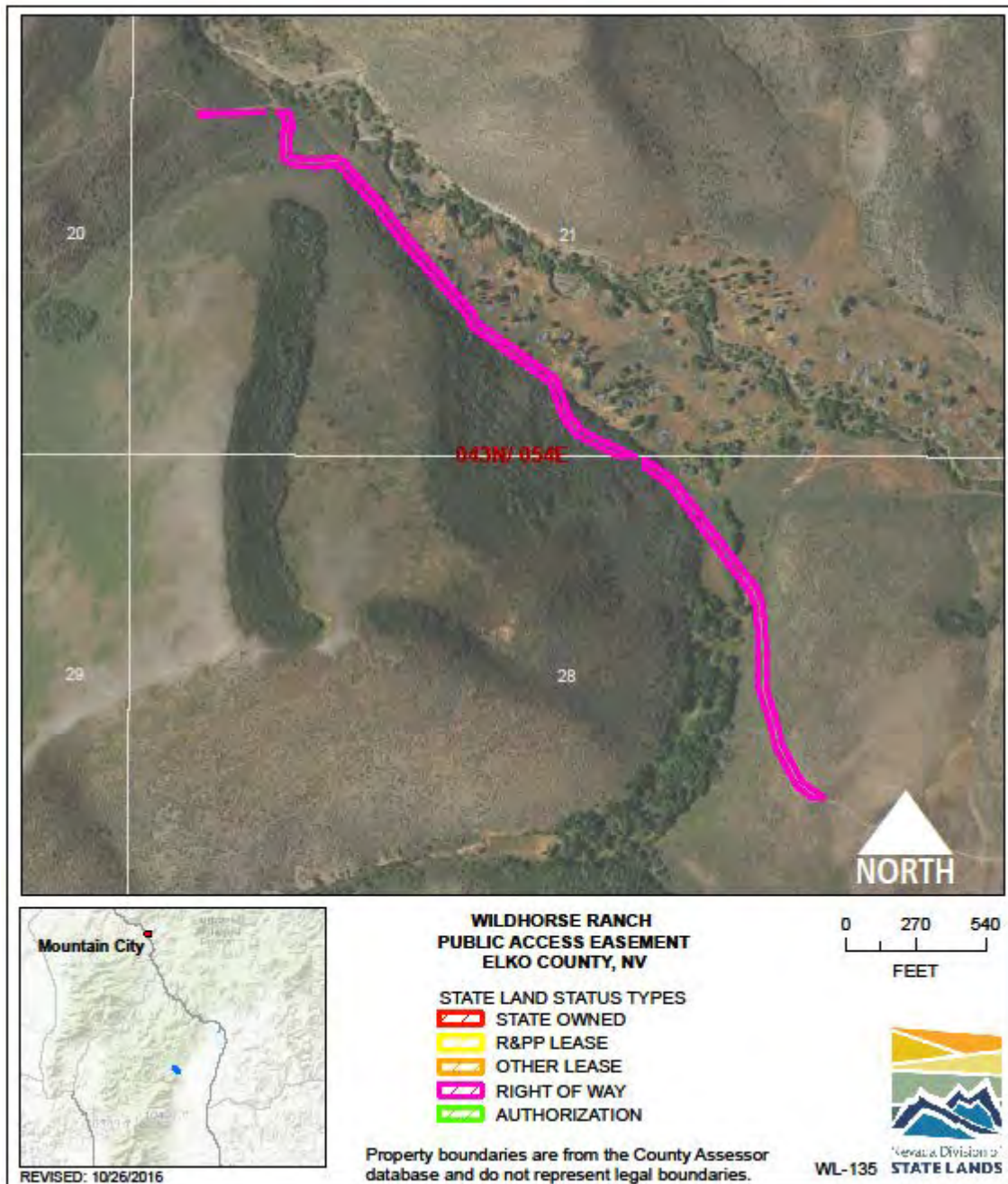
USE/AGENCY: Communications infrastructure/NDOW

MEETS AGENCY LAND NEEDS (Y/N/STRATEGIC): Y

PERFORMING ASSET (Y/N/PARTIAL): Y

ISSUES/RESTRICTIONS: Right-of-way expires 2/21/2024.

RECOMMENDATIONS: Retain for agency operations.



WILDLIFE: WILDHORSE RANCH PUBLIC ACCESS EASEMENT WL 135

LOCATION: SW of Wildhorse Reservoir, Elko County

ACRES: 2.50

USE/AGENCY: Public Access /NDOW

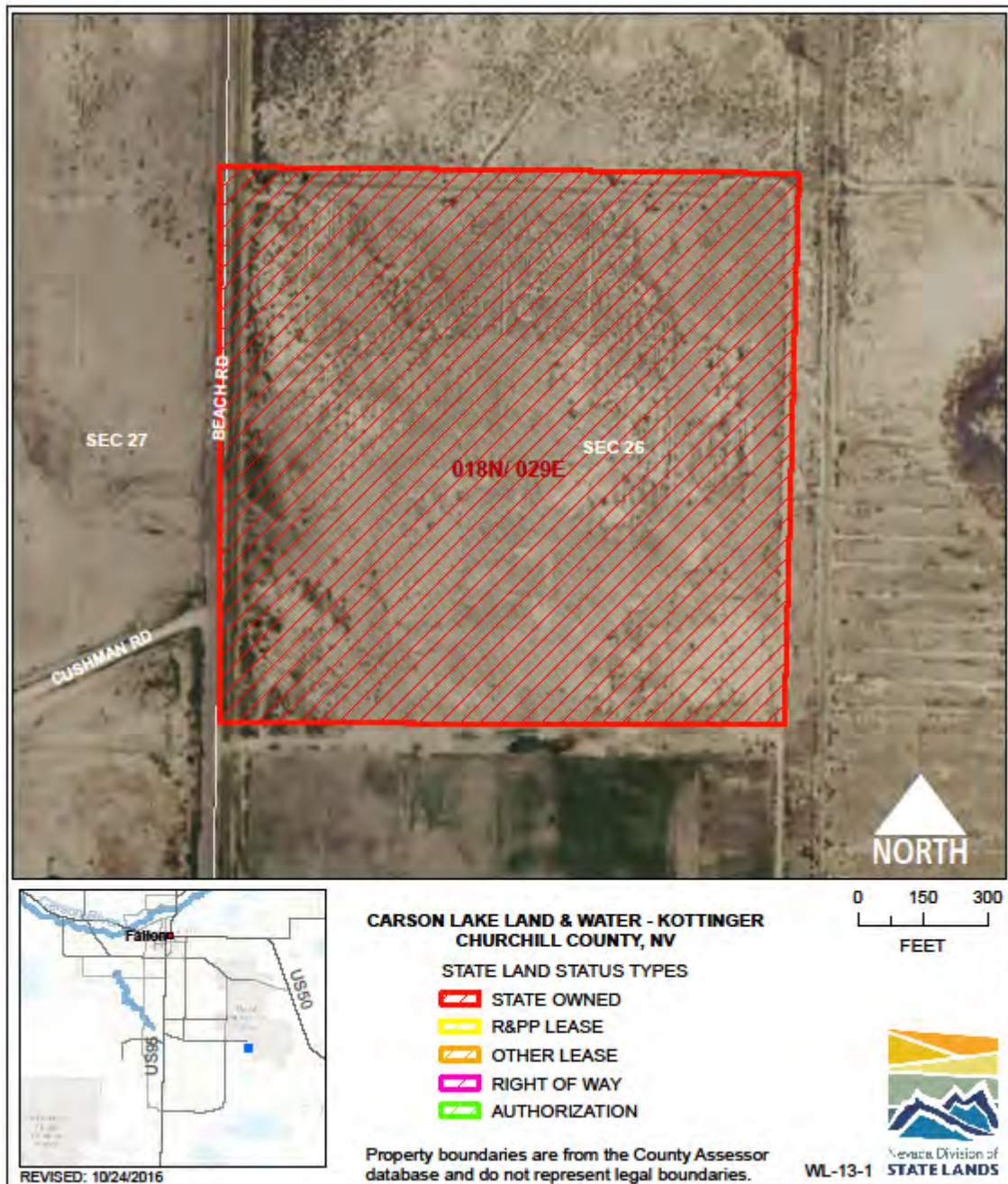
MEETS AGENCY LAND NEEDS (Y/N/STRATEGIC): Y

PERFORMING ASSET (Y/N/PARTIAL): Y

ISSUES/RESTRICTIONS:

RECOMMENDATIONS: Retain for agency operations. Associated with conservation easement held by Rocky Mountain Elk Foundation.

WATER RESOURCES



WATER RESOURCES: KOTTINGER WL-13-1

LOCATION: Fallon

ACRES: 39.06

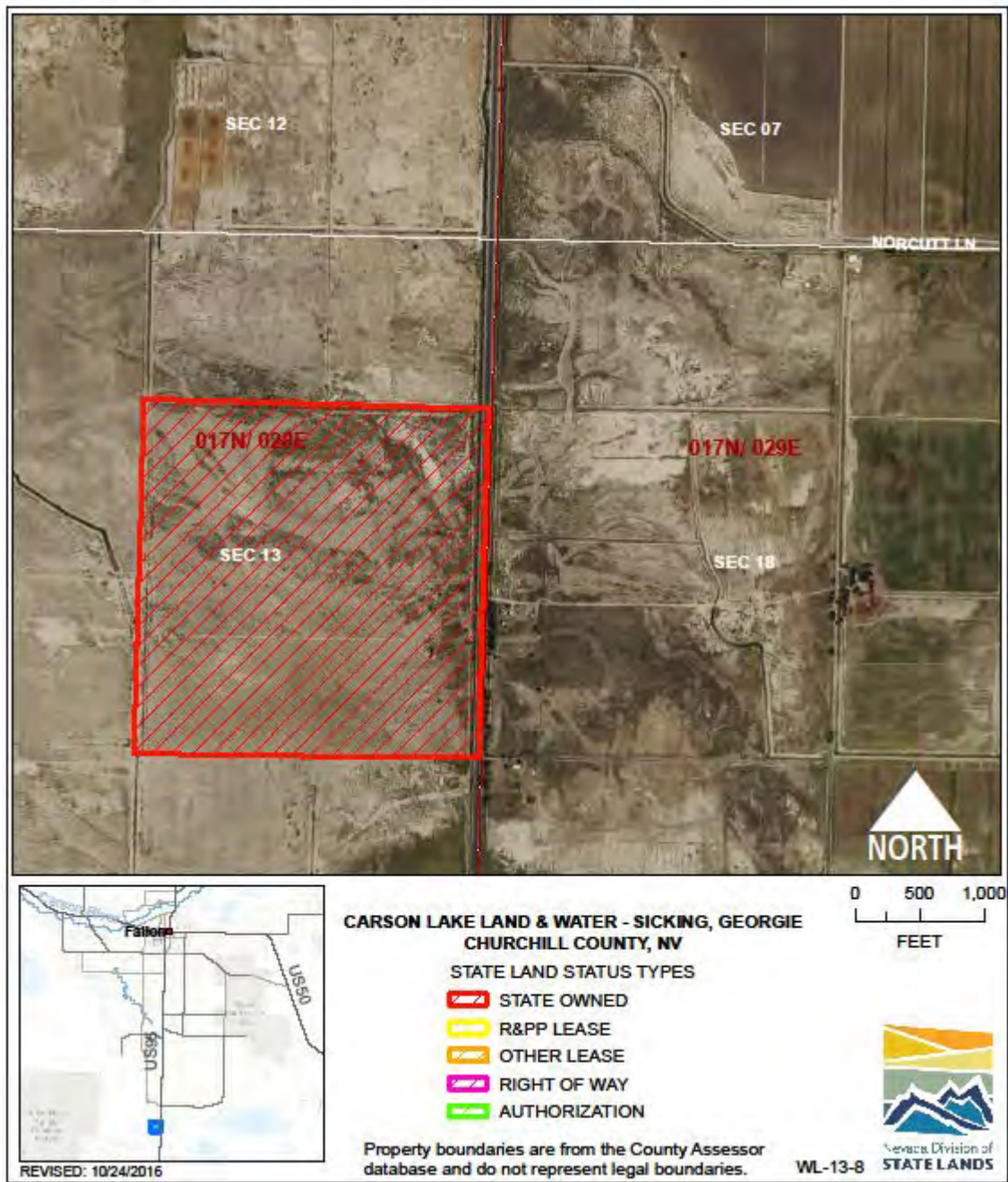
USE/AGENCY: NDOW

MEETS AGENCY LAND NEEDS (Y/N/STRATEGIC): Y

PERFORMING ASSET (Y/N/PARTIAL): Y

ISSUES/RESTRICTIONS: Water rights stripped

RECOMMENDATIONS: Retain for agency operations.



WATER RESOURCES: GEORGIE SICKING WL-13-8

LOCATION: Fallon

ACRES: 167.66

USE/AGENCY: NDOW

MEETS AGENCY LAND NEEDS (Y/N/STRATEGIC): Y

PERFORMING ASSET (Y/N/PARTIAL): Y

ISSUES/RESTRICTIONS: Water rights stripped

RECOMMENDATIONS: Retain for agency operations.



WATER RESOURCES: WILLIAMSON WL-13-13

LOCATION: Fallon

ACRES: 82.05

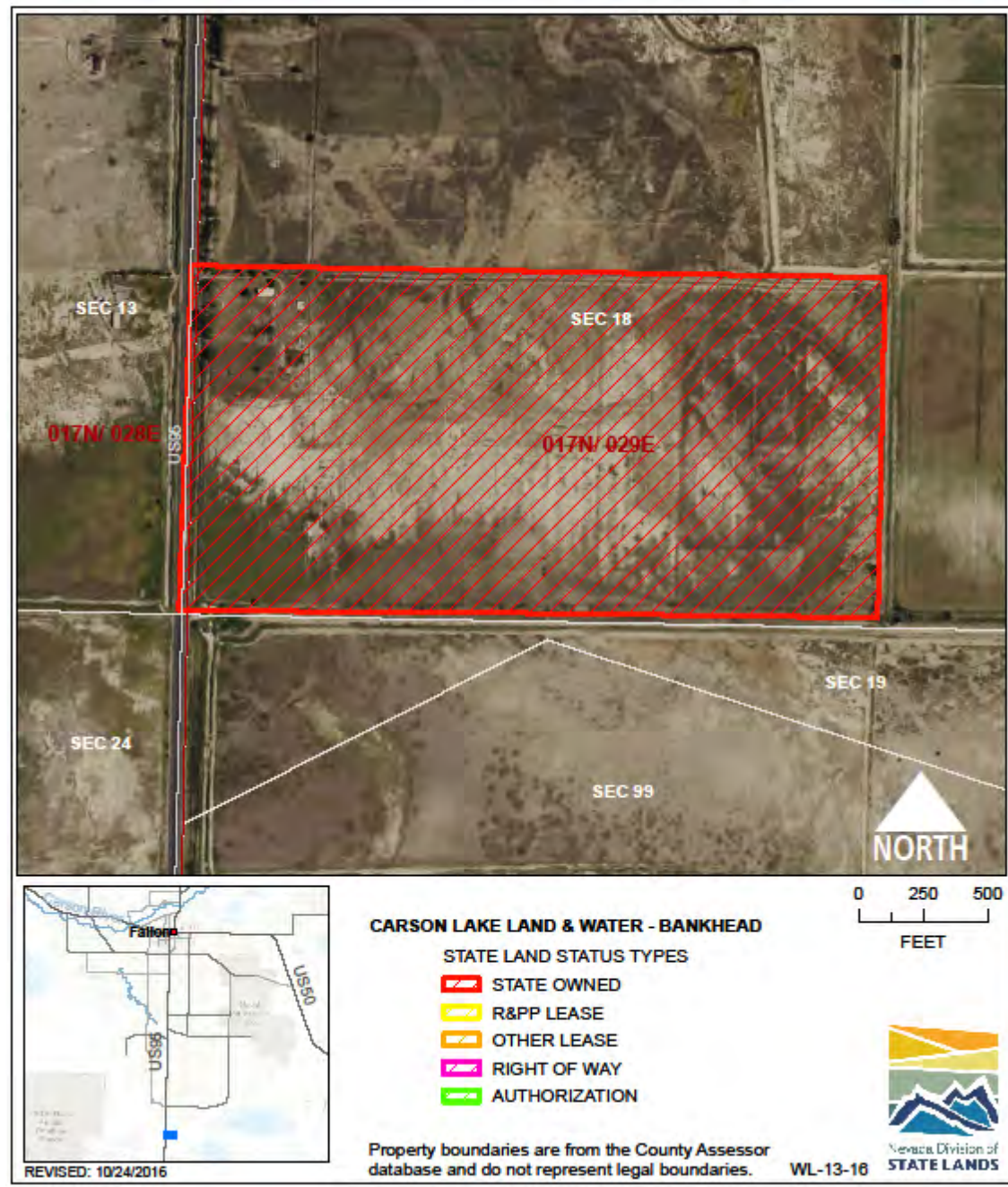
USE/AGENCY: NDOW

MEETS AGENCY LAND NEEDS (Y/N/STRATEGIC): Y

PERFORMING ASSET (Y/N/PARTIAL): Y

ISSUES/RESTRICTIONS: Water rights stripped

RECOMMENDATIONS: Retain for agency operations.



WATER RESOURCES: BANKHEAD WL-13-16

LOCATION: Fallon

ACRES: 82.26

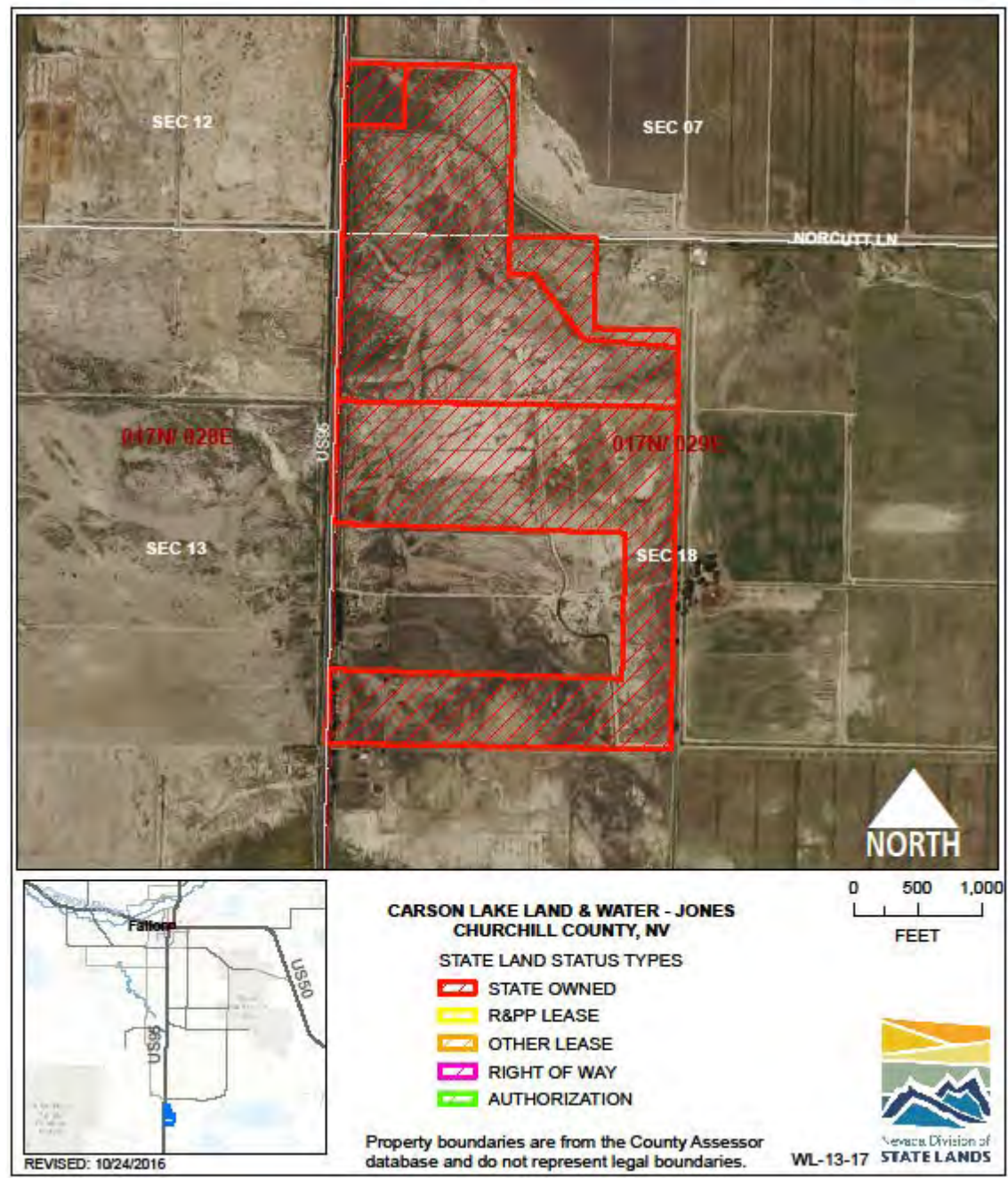
USE/AGENCY: NDOW

MEETS AGENCY LAND NEEDS (Y/N/STRATEGIC): S

PERFORMING ASSET (Y/N/PARTIAL): P

ISSUES/RESTRICTIONS: Water rights stripped.

RECOMMENDATIONS: Retain for agency operations



WATER RESOURCES: JONES WL-13-17
LOCATION: Fallon
ACRES: 214.28
USE/AGENCY: NDOW
MEETS AGENCY LAND NEEDS (Y/N/STRATEGIC): S
PERFORMING ASSET (Y/N/PARTIAL): P
ISSUES/RESTRICTIONS: Water rights stripped.
RECOMMENDATIONS: Retain for agency operations



WATER RESOURCES: JOE SICKING WL-13-21

LOCATION: Fallon

ACRES: 151.75

USE/AGENCY: NDOW

MEETS AGENCY LAND NEEDS (Y/N/STRATEGIC): S

PERFORMING ASSET (Y/N/PARTIAL): P

ISSUES/RESTRICTIONS: Water rights stripped.

RECOMMENDATIONS: Retain for agency operations



WATER RESOURCES: SCHELL WL-13-40

LOCATION: Fallon

ACRES: 29.64

USE/AGENCY: NDOW

MEETS AGENCY LAND NEEDS (Y/N/STRATEGIC): S

PERFORMING ASSET (Y/N/PARTIAL): P

ISSUES/RESTRICTIONS: Water rights pending transfer to Carson Lake pasture.

RECOMMENDATIONS: Retain for agency operations