



U.S. Department of the Interior  
Bureau of Land Management

# Nevada State-Wide Resource Management Plan: Updated Planning Efforts







# Why do a Nevada State-wide Resource Management Plan (NV RMP)?

During the most recent RMP evaluations, it was determined that revisions were necessary because there is new data, new and revised policy, and changes in circumstances that affect each plan in its entirety, such as additions of National Monuments and National Conservation Areas.

## WELLS RECORD OF DECISION

U.S. Dep  
Bureau

## ELKO RESOURCE MANAGEMENT PLAN RECORD OF DECISION



1987

DEPARTMENT OF THE INTERIOR  
BUREAU OF LAND MANAGEMENT  
Elko District Office Elko, Nevada

Wells  
1985

Elko  
1987

## SHOSHONE-EUREKA RESOURCE AREA RECORD OF DECISION

Shoshone-  
Eureka  
1986

U.S. DEPARTMENT  
BUREAU OF L  
Battle M  
Battle M



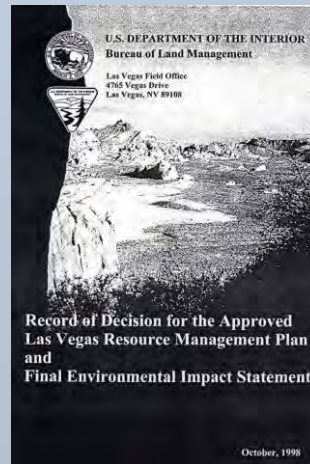
United States Department of the Interior  
Bureau of Land Management  
Battle Mountain District  
Tonopah Field Station, Tonopah, Nevada

October 1997

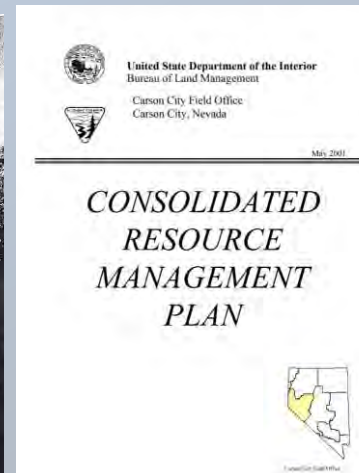
APPROVED  
Tonopah Resource Management Plan and  
Record of Decision



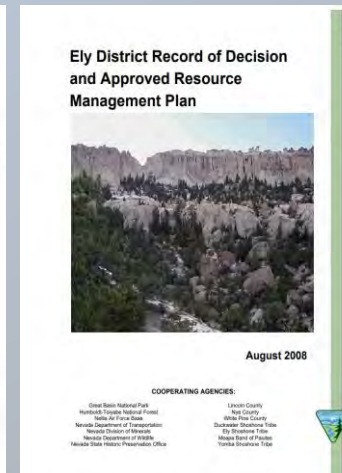
Tonopah  
1997



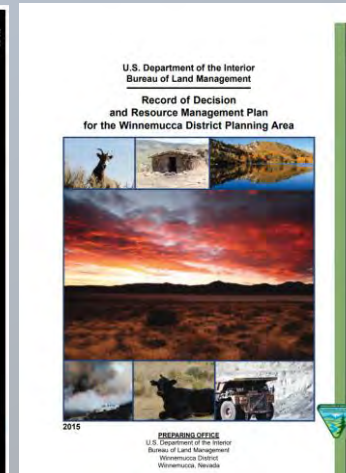
Las Vegas  
1998



Carson City  
2001



Ely  
2008



Winnemucca  
2015





U.S. Department of the Interior  
Bureau of Land Management



# NV RMP Approach:

The state-wide RMP approach avoids the continuation of serial, piecemeal RMP amendments in each district and assures consistency throughout the state. Additionally, a state-wide RMP gains economy of scales and supports efforts by the Nevada State Office to develop and modernize one state-wide planning effort that will provide up to 16 RMP - Record of Decisions (ROD). This includes decisions for six districts, Nevada Test and Training Range, three national monuments, five national conservation areas, and one special management area.



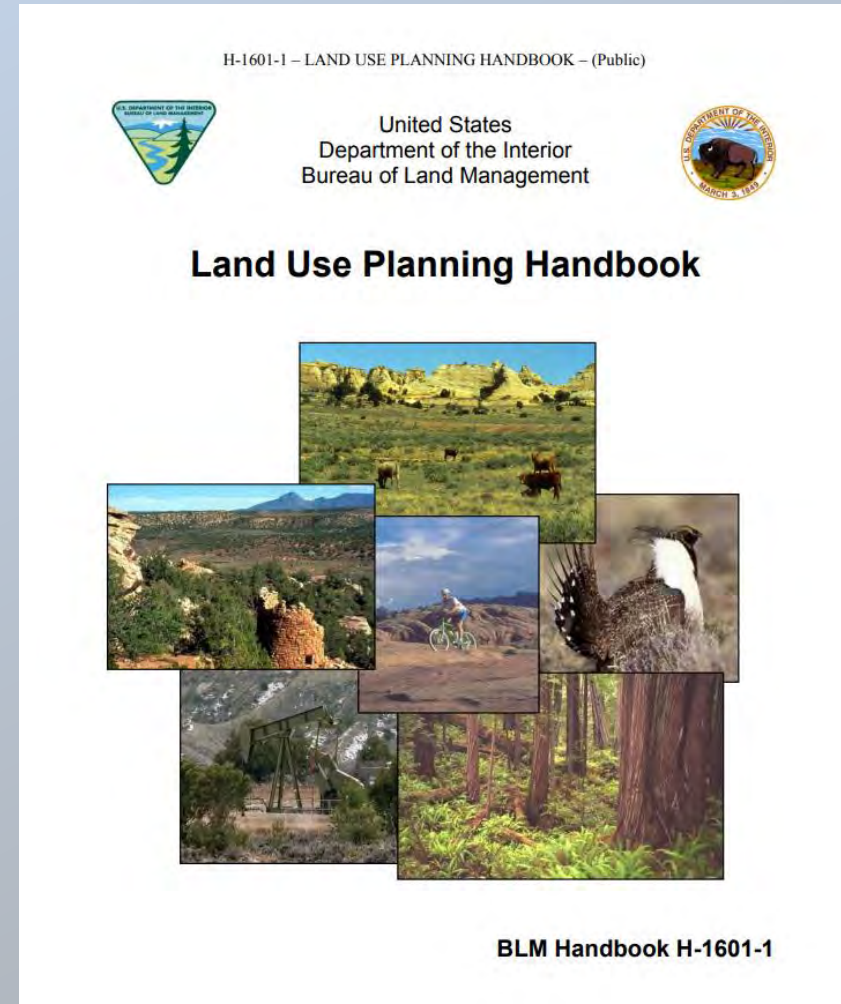




# What is the Planning Process for the NV RMP?

## Land Use Plan Components

1. RMP Evaluations ✓
  1. Strategic Vision ✓
2. BLM or State Director Guidance ✓
3. Preparation Plan ←
4. Planning Criteria and Analysis of Management Situation
5. Notice of Intent and Scoping
6. Draft RMP/EIS
7. Public Comment on the Draft RMP/EIS
8. Proposed RMP/Final EIS
9. Protest and Governor's Consistency Review of the Proposed RMP
10. Record of Decision and the Approved RMP





U.S. Department of the Interior  
Bureau of Land Management



# Strategic Vision:

## Compared all RMP evaluations rationale:

1. New data
2. New and revised policy
3. Changes in circumstances that affect each plan in its entirety

## Compared all RMP evaluation determinations:

1. Revise
2. Amend
3. No changes needed at this time.

## Determine a preliminary purpose and need: Are they similar to each other?

The RMP is needed to provide management to comply with the BLM's obligation under the Federal Land Policy and Management Act (FLPMA) to develop LUPs for the use of public lands. In addition, there is a need to provide updated management guidance for areas with a current LUP to respond to changing conditions and needs in the Planning Area. The BLM conducted evaluations of its current LUPs in BLM-NV, which concluded that revisions were needed to update management decisions in light of new information; changed resources, circumstances, and policies; and other issues that have surfaced since the current RMPs were approved.

The overall purpose of this RMP is to provide the BLM-NV with a comprehensive LUP that will enable the BLM to respond to proposals and efficiently address the long-term management within the Planning Area, in accordance with the multiple-use and sustained-yield principles mandated by the FLPMA (43 U.S. Code [USC] 1701 et seq.). The Nevada State-wide RMP will consolidate, replace the current management guidance for the Planning Area, and will provide guidance for all areas in the Planning Area without current LUPs.



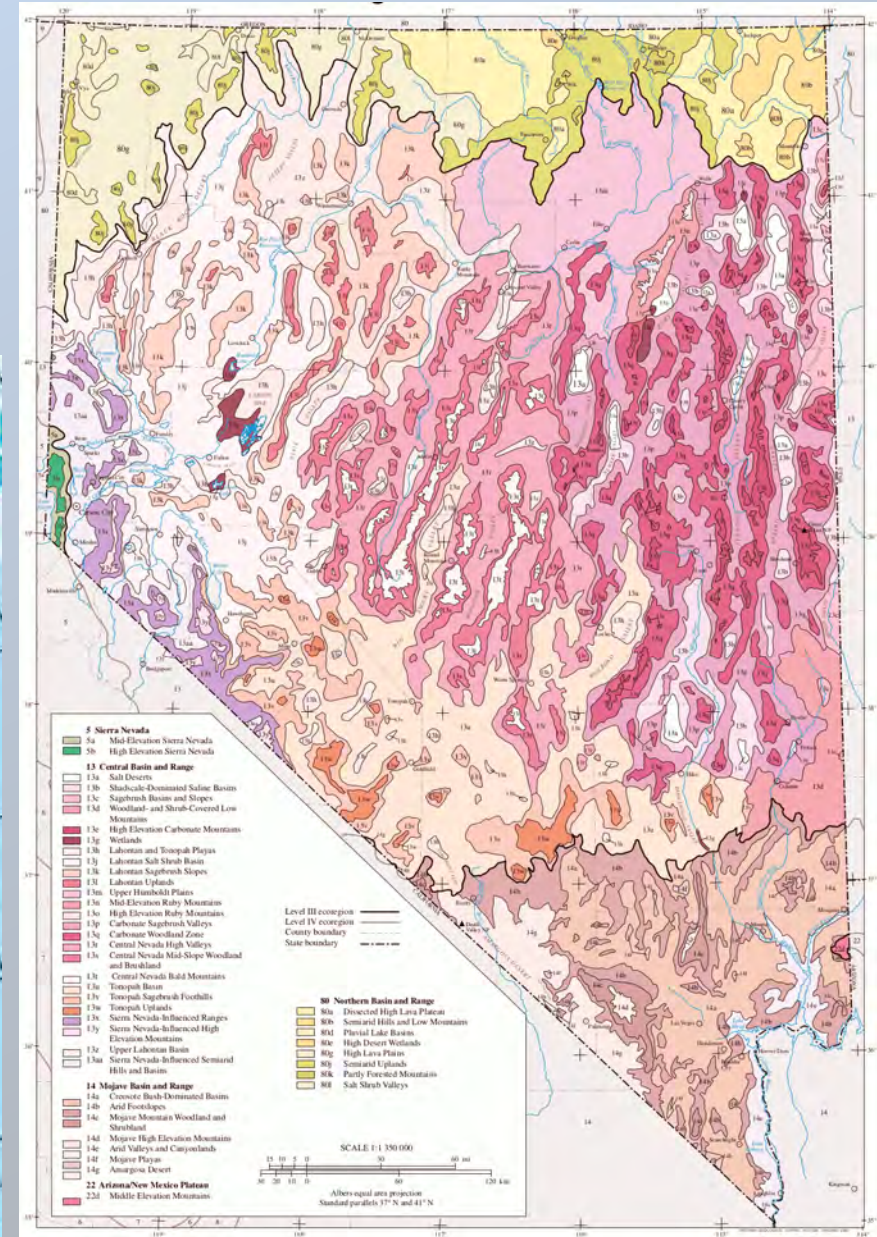


U.S. Department of the Interior  
Bureau of Land Management



# Strategic Vision:

Does this make ecological sense to do a RMP at the landscape scale?



[https://gaftp.epa.gov/EPADDataCommons/ORD/Ecoregions/cec\\_na/NA\\_LEVEL\\_III.pdf](https://gaftp.epa.gov/EPADDataCommons/ORD/Ecoregions/cec_na/NA_LEVEL_III.pdf)

[https://web.archive.org/web/20160123235458/http://archive.epa.gov/web/ecoregions/web/html/nv\\_eco.html](https://web.archive.org/web/20160123235458/http://archive.epa.gov/web/ecoregions/web/html/nv_eco.html)





U.S. Department of the Interior  
Bureau of Land Management



# Leaders Intent from the State Director Jon Raby

1. Work collaboratively with our Federal and State partner agencies, local cooperating agencies, tribal nations, and our private and public stakeholders.
2. Meet required laws, regulations, policies, and Department of Interior priorities while ensuring that public lands are managed according to the principles of multiple use and sustained yield per the Federal Land Policy and Management Act (FLPMA).
3. Address new issues and management concerns as well as changing resource demands and conditions.
4. Deliver management consistency throughout Nevada while acknowledging and accommodating unique circumstances and locational variations.
5. Provide landscape level management goals, objectives, allocations, and management actions that:
  - a) Reinforce collaboration with partners and volunteers to protect and expand access for use and enjoyment of public lands for the physical and mental well-being of public land users.
  - b) Apply the highest quality information and cutting-edge technology and techniques to facilitate on-the-ground activities and projects
  - c) Are designed to protect, restore, and enhance public lands for current and future generations while appropriately balancing these with development and use.
  - d) Support energy independence through fostering positive working relationships and economic development; and Support a safe and enjoyable experience on the public lands.



# **Preparation Plan:** *We are currently at this stage in the process.*

1. Introduction and Background ✓
2. Approach for Formulating Reasonable Alternatives
3. Preliminary Planning Criteria ←
4. Data and Geospatial Needs (including data inventories) ←
5. Documentation Strategy
6. Participants in the Process ←
7. Process for reviewing documents
8. Public Participation Strategy ←
9. Planning Schedule
10. Budget ←





U.S. Department of the Interior  
Bureau of Land Management



## Next Steps:

Planning Criteria and Analysis of Management Situation (AMS) is next after the Preparation Plan is completed.





U.S. Department of the Interior  
Bureau of Land Management



# Anticipated Challenges:

1. Employee retention and staffing districts: We must ensure that district's project demands has the expertise for current workloads and still be able to dedicate staff and resources to the statewide RMP.
2. Funding (including baseline data).
3. Intergovernmental, Government to Government, and Public engagement strategies will be amplified because of the scope and scale of the RMP.





U.S. Department of the Interior  
Bureau of Land Management



# Questions?

Tye Morgan  
BLM State Office: NV RMP  
Project Manager  
[tamorgan@blm.gov](mailto:tamorgan@blm.gov)

Carolyn Sherve  
BLM State Office: Acting  
Planning & NEPA Program  
Lead  
[csherve@blm.gov](mailto:csherve@blm.gov)

Nancy Army  
BLM State Office: Planner  
and Environmental  
Coordinator  
[Narmy@blm.gov](mailto:Narmy@blm.gov)

Dan Kozar  
BLM State Office: Acting  
Branch Chief for Non-  
Renewable Resources  
[Dkozar@blm.gov](mailto:Dkozar@blm.gov)

Jon Raby  
BLM State Office: State  
Director  
[Jraby@blm.gov](mailto:Jraby@blm.gov)