

EUREKA COUNTY



THE
GOOD
AND THE
BAD UGLY

Jake Tibbitts
State Land Use Planning Advisory Council
August 4, 2023

Eureka County is a Great Place to Live, Work and Visit

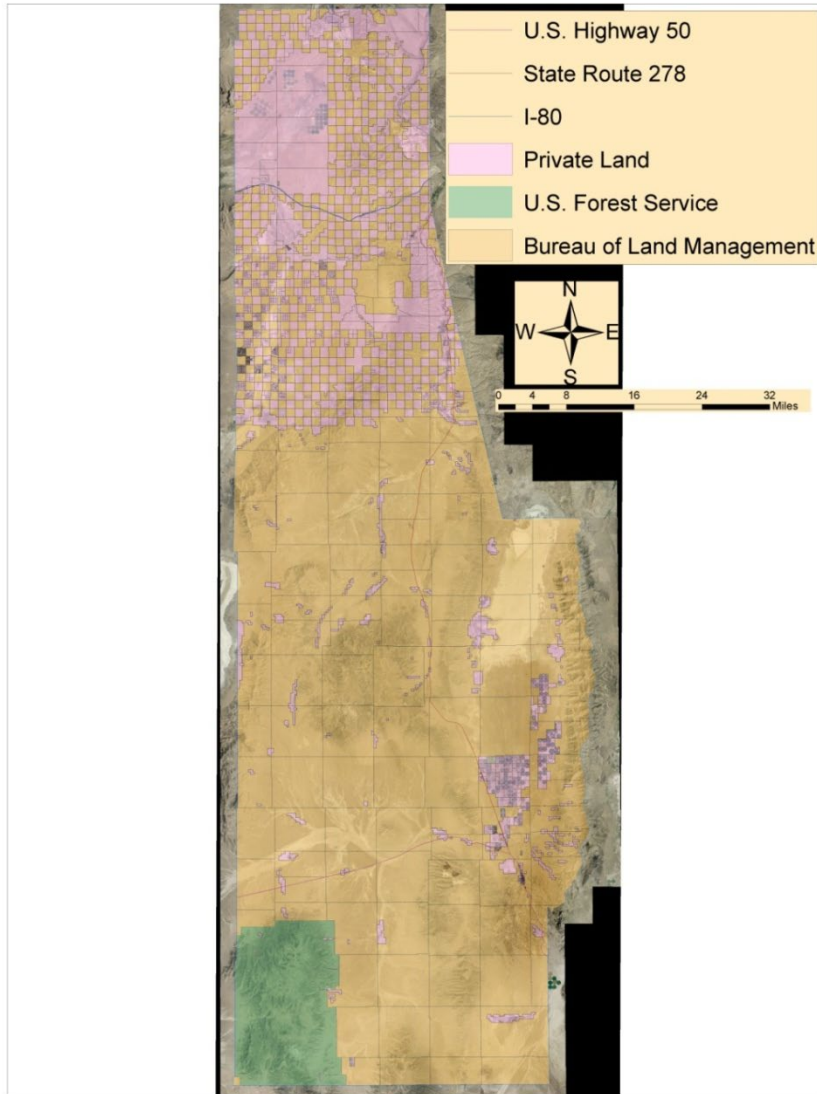




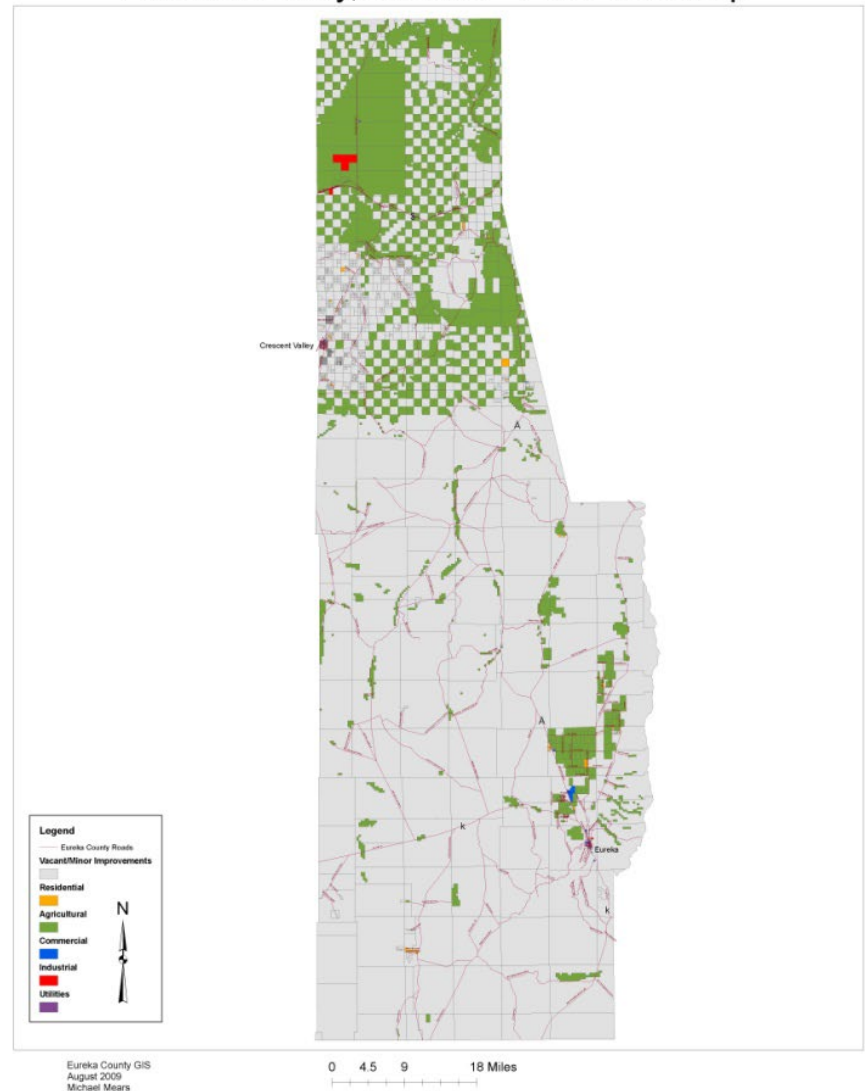
- Eureka County has a estimated population of ~2000 with most living in Eureka and Diamond Valley with the bulk of the remainder in Crescent Valley and Beowawe.
- Eureka County is known for its historical “boom and bust” associated with mining, but also heavily relies on the ranching and farming sector for maintenance of its long-term economic stability and vitality.
- Southern Eureka County has remained fairly stable in terms of adverse socioeconomic impacts.
- Eureka County encompasses 2,676,718 acres (4,182 square miles) of land of which 81% (2,165,280 acres) is administered by the federal government. Nearly all of Eureka County’s economic future relies on activities conducted on or in concert with public lands.
- Over \$40 M worth of agriculture commodity sales with ~40% tied to livestock industry and 60% tied to export hay (Census of Agriculture) .

- Volunteer Planning Commission with only admin staff
- No building department
- No zoning
- Natural Resources Advisory Commission
- Natural Resources Department and Manager

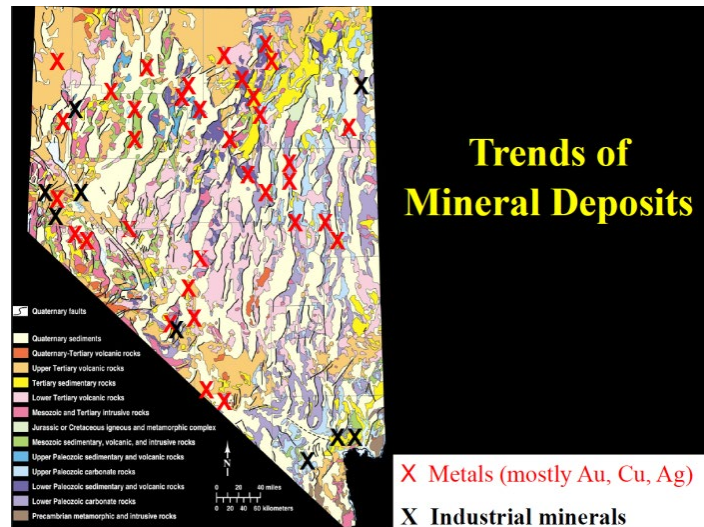
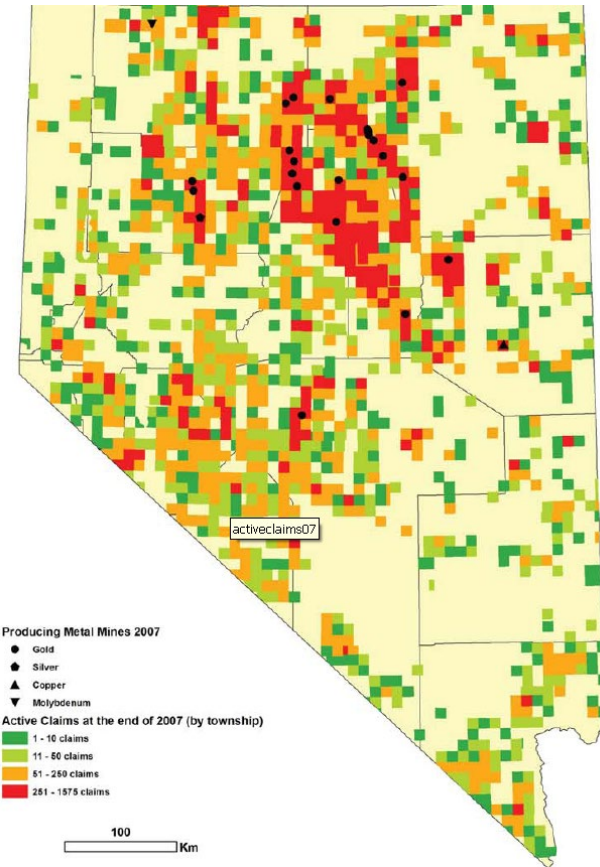
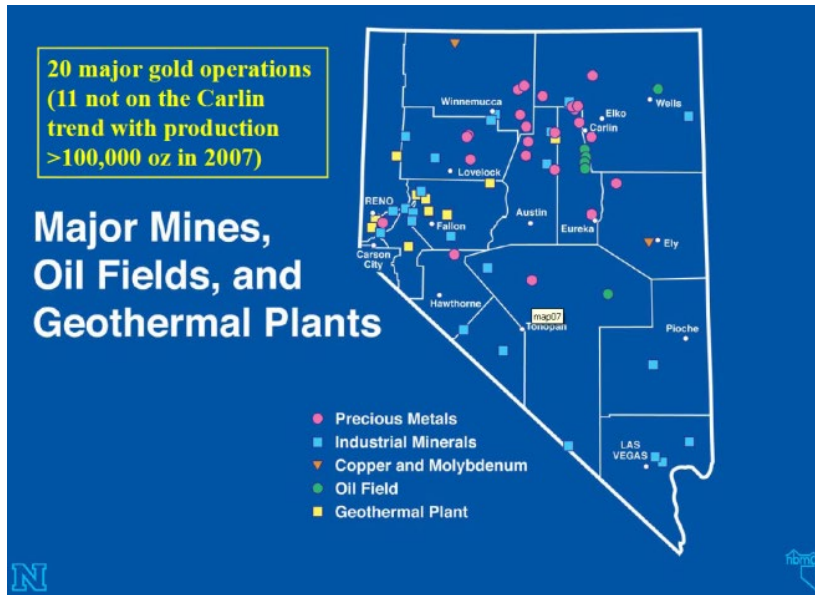
Land Use and Ownership



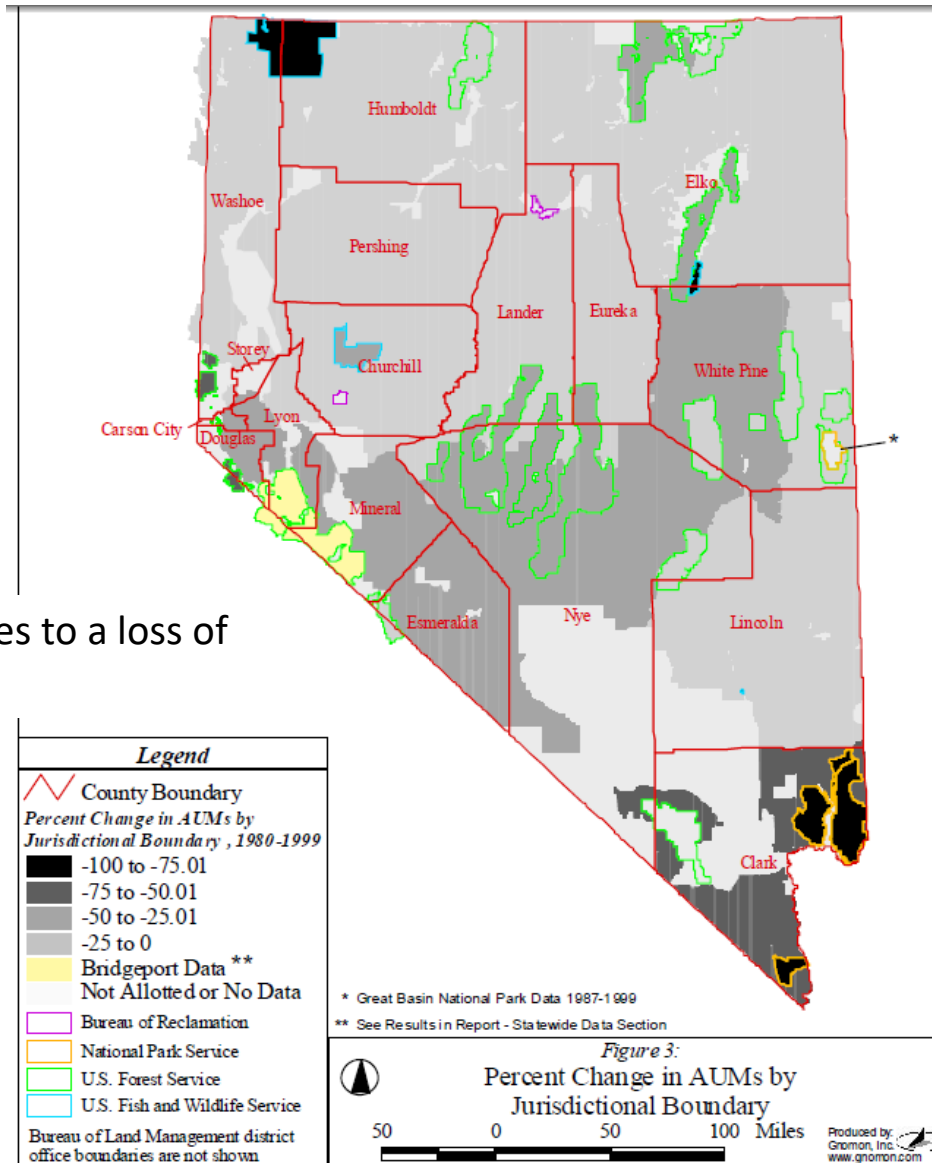
Eureka County, Nevada - Land Use Map



Mining in Eureka County



Grazing in Eureka County



Every AUM lost equates to a loss of
 ~\$108/yr.

Agriculture in Eureka County



\$20 M - \$30M per year tied to export hay industry

Eureka County: No Stranger to Water Issues

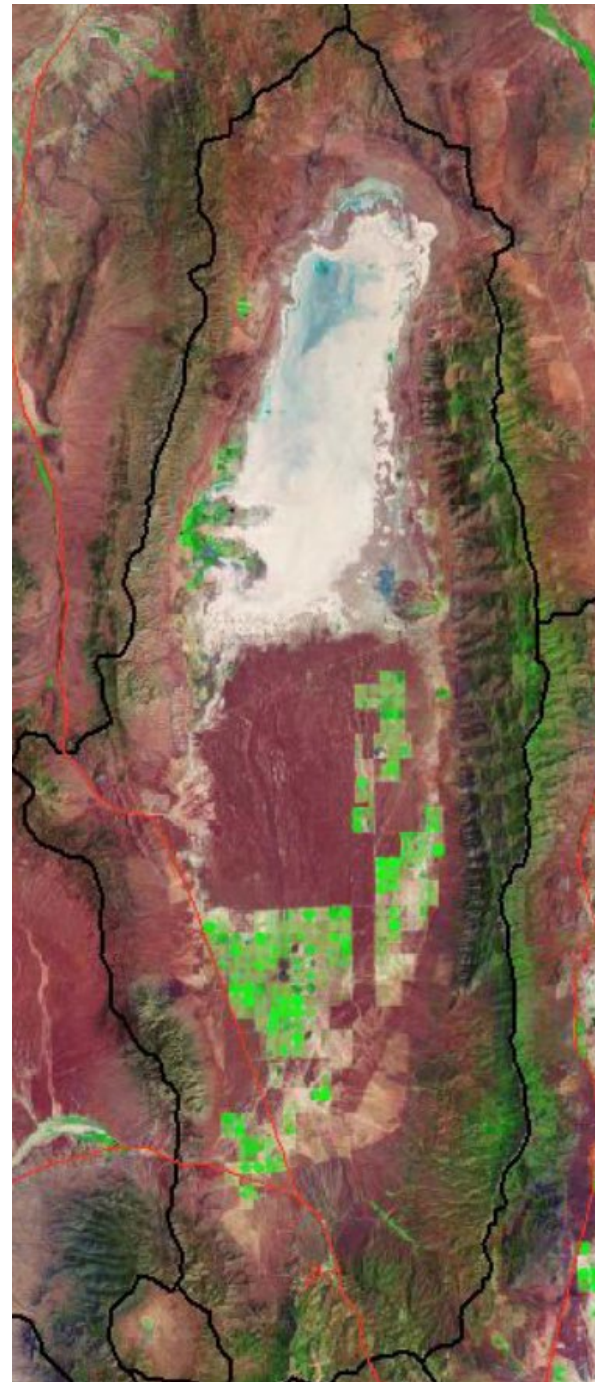


Discussing Water Rights, A Western Pastime

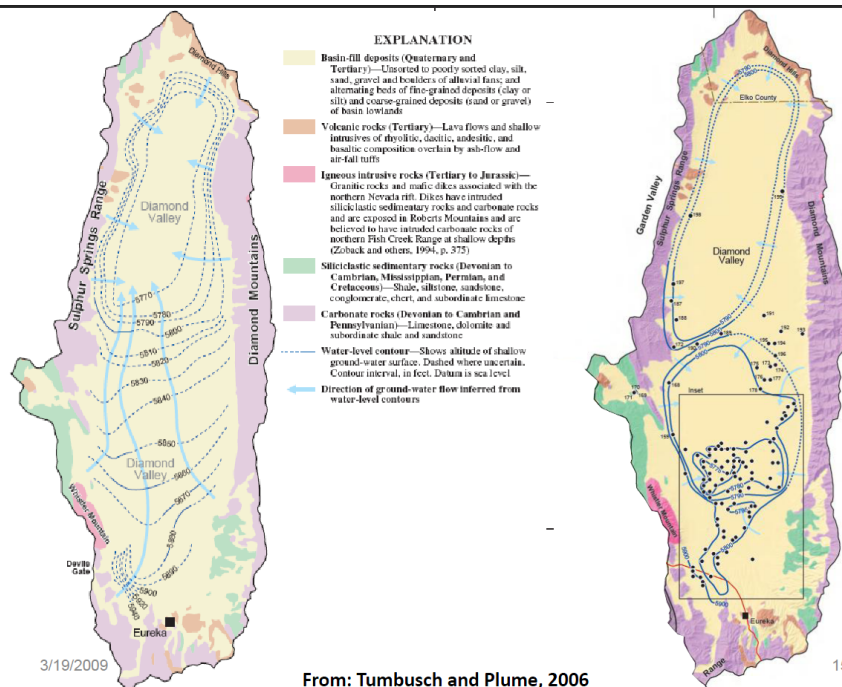
- Efforts to tie growth to available water resources is difficult throughout Eureka County
- Sustainable use of water
 - Economically, environmentally and socially

Diamond Valley

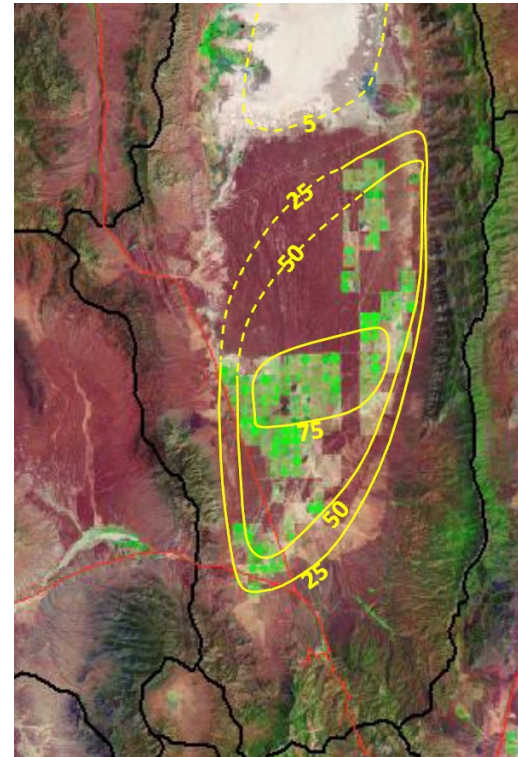
- Largest groundwater agriculture center in Nevada
- Severely over-appropriated
 - 135,000 AF committed
 - 70,000 AF pumped
 - 30,000 AF perennial yield
- Groundwater Management Plan in effect



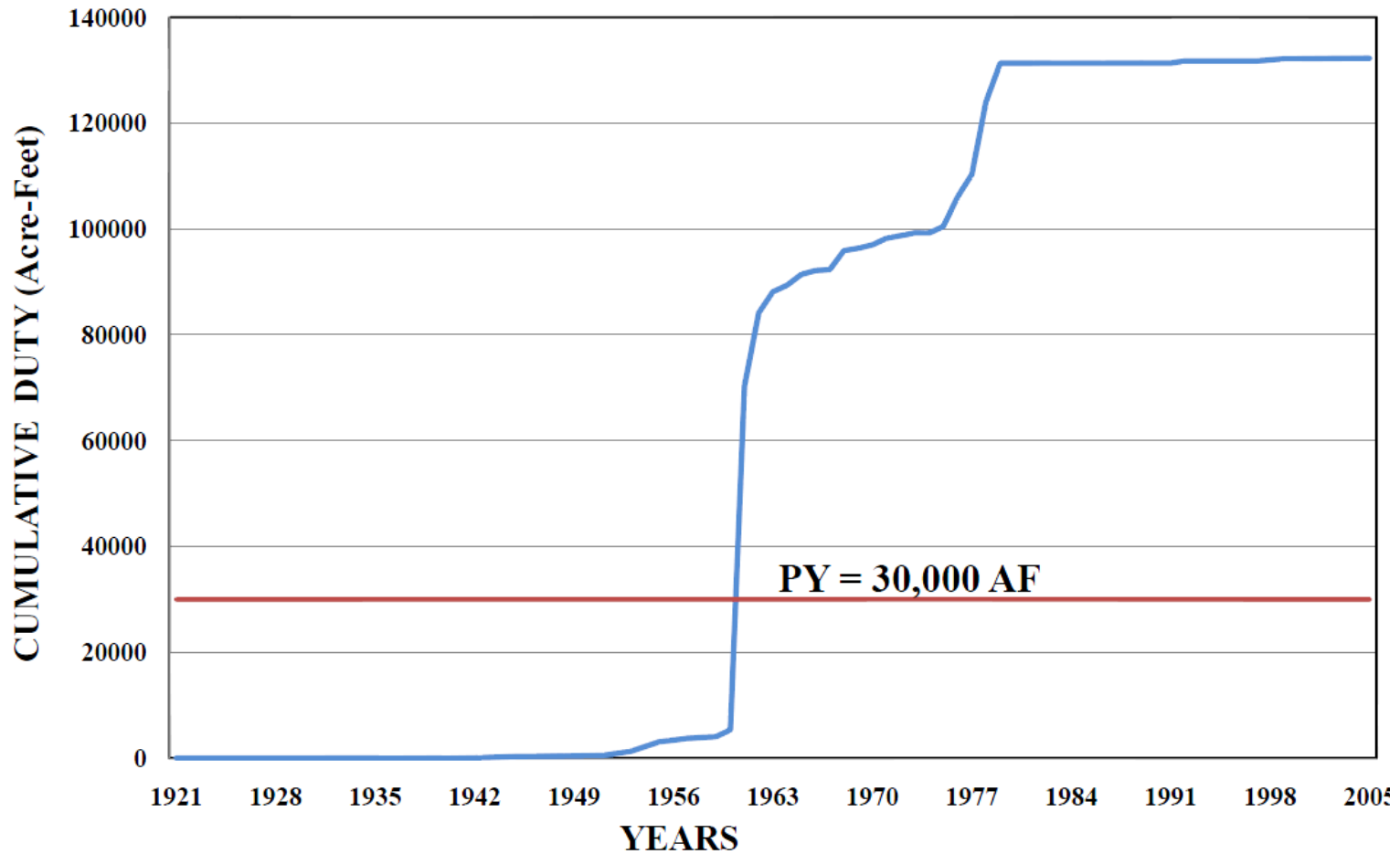
Diamond Valley Groundwater Level Decline



15



Water Rights in Diamond Valley



Eureka County Planning Efforts

- Struggling with efforts to meet current needs and prepare for future growth related to the current and proposed mining
- Aggressively updating infrastructure
 - Reliable long-term water supply
 - Update of sewer and water
 - Roads
- Housing shortage
 - Eureka Canyon Subdivision
- Federal and State Agency Coordination
 - Consistency with local plans and policies
- Addressing land use on previously irrigated farmland