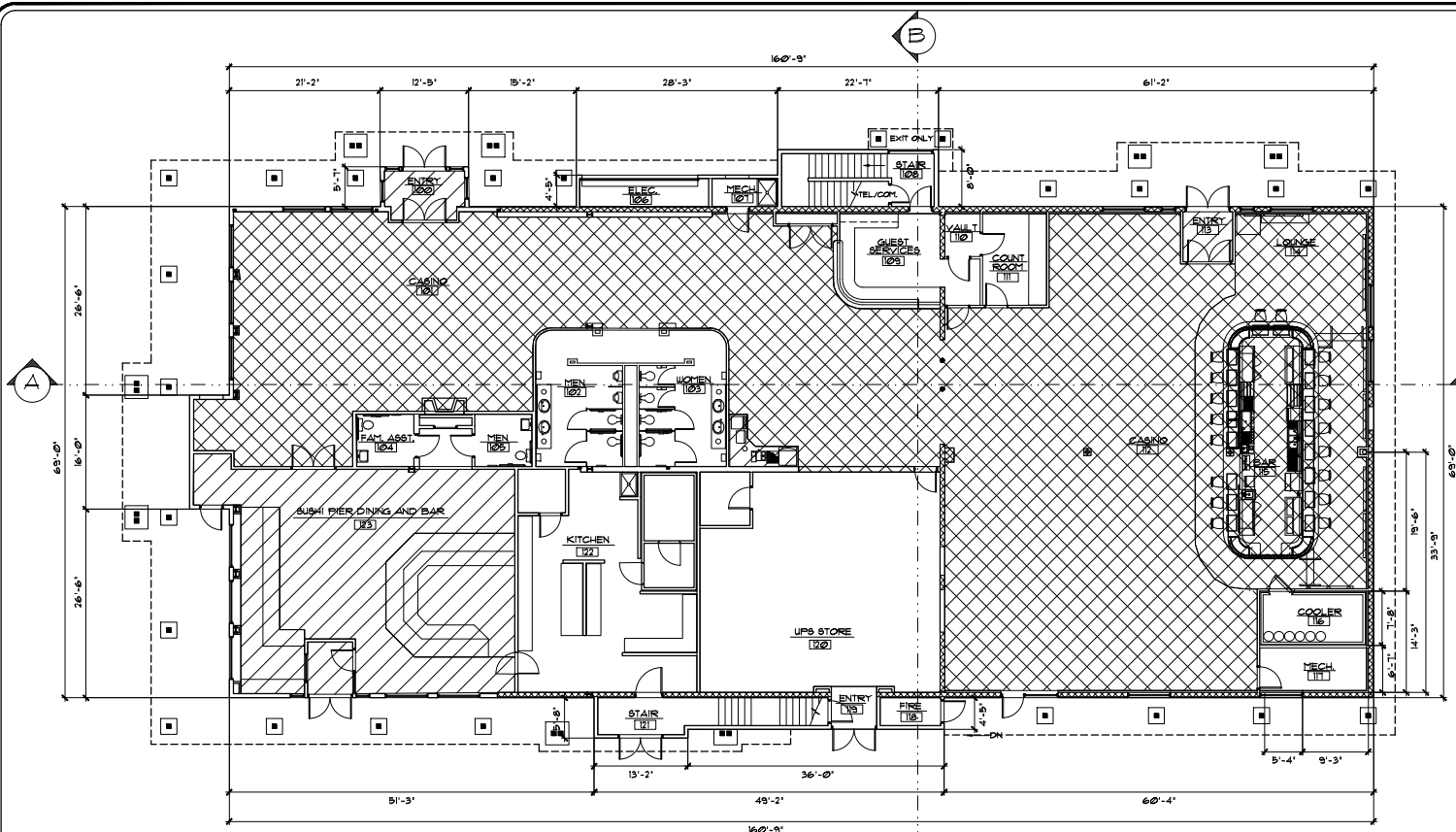


Charlie Donohue
 Re: Request to Reconfirm Base Data
 Tahoe Nugget (formerly Ed's Tahoe Nugget)
 177 US Highway 60, Stateline, NV
 Exhibit F, Pg. 1 of 4



PHASE I IMPROVEMENT PLANS
 SCALE 1/8"=1'-0"



FLOOR SUMMARY TABLE

FIRST FLOOR CALCULATIONS	SQ. FT.	HEIGHT FT.	VOLUME CU. FT.
PRIVATE	0		
PUBLIC	11,789	13'-8" TO 15'-5"	173,134
BASE	7,478	13'-8" TO 15'-5"	
GAMING	6,069	13'-8" TO 15'-5"	
NON-BASE	4,311	13'-8" TO 15'-5"	
SECOND FLOOR CALCULATIONS	SQ. FT.	HEIGHT FT.	VOLUME CU. FT.
PRIVATE	0		
PUBLIC	4,774	11'-0"	51,711
BASE	0	11'-0"	
GAMING	0	11'-0"	
NON-BASE	4,774	11'-0"	
BUILDING TOTALS	SQ. FT.	HEIGHT FT.	VOLUME CU. FT.
PRIVATE	0		
PUBLIC	16,563		224,845
BASE	7,478		
GAMING	6,069		
NON-BASE	9,085		

GENERAL NOTES

ON SEPTEMBER 25TH AND 26TH OF 2020, MEASUREMENTS OF THE EXTERIOR AND INTERIOR ARCHITECTURAL ELEMENTS OF THE TAHOE NUGGET BUILDING LOCATED AT 177 US, HIGHWAY 60, STATELINE, NEVADA WERE TAKEN UTILIZING A STEEL MEASURING TAPE. IN JULY, AUGUST AND SEPTEMBER OF 2021 INTERIOR WALLS AND SURFACES IN THE NORTH HALF OF THE BUILDING WERE DEMOLISHED IN PREPARATION TO PREPARE CONSTRUCTION DRAWINGS FOR THE FUTURE IMPROVEMENTS. THE PREVIOUS MEASUREMENTS WERE CONFIRMED.

THE MEASUREMENTS OF THE EXTERIOR OF THE BUILDING CORRESPOND CLOSELY TO THE PLANS PREPARED BY LINDAHL & ASSOCIATES DATED NOVEMBER 22 1995 AND APPROVED WITH REVISIONS BY TAHOE REGIONAL PLANNING AGENCY ON JANUARY 27, 1996. IT APPEARS THESE PLANS WERE REVISIONS TO THE TAHOE NUGGET REMODEL PLANS THAT WERE APPROVED BY NTRPA ON JUNE 2, 1995. THE ONLY SIGNIFICANT DIFFERENCES FROM THE REVISED 1/27/95 PLANS FOR THE GROUND FLOOR ARE THE FOLLOWING:

1. THE BUILDING IS APPROXIMATELY 9' LONGER IN THE EAST-WEST DIRECTION.
2. THERE IS A NEW ENTRANCE FOR THE SUSHI PIER RESTAURANT.
3. THERE ARE TWO FEWER WINDOWS ON THE EAST ELEVATION.

THE INTERIOR OF THE GROUND FLOOR HAS BEEN CHANGED NUMEROUS TIMES SINCE 1995 WITH VARIOUS TENANT IMPROVEMENTS.

THE SECOND FLOOR AND STAIRWELLS ALSO CORRESPOND CLOSELY WITH THE 1/27/95 PLANS EXCEPT FOR THE FOLLOWING DIFFERENCES:

1. THE SECOND FLOOR IS APPROXIMATELY 9' LONGER IN THE EAST-WEST DIRECTION.
2. TWO MECHANICAL CHASES HAVE BEEN ADDED TO THE WEST ELEVATION.

THE INTERIOR HAS BEEN MODIFIED WITH SOME MINOR TENANT IMPROVEMENTS.

BUILDING AREAS AND VOLUME

GROUND FLOOR FOOTPRINT	17,789 SF.
SECOND FLOOR FOOTPRINT	4,774 SF.
TOTAL SQUARE FOOTAGE	16,563 SF.
TOTAL BUILDING VOLUME	220,816 CF.

THE CURRENT NEVADA TAHOE REGIONAL PLANNING AGENCY'S BASE DATA FOR THIS BUILDING IS BASED ON A 1982 SOUTH TAHOE NUGGET PLAN THAT WAS APPROVED BY NTRPA 2/1/87. SINCE 1981 THERE HAVE BEEN SOME CHANGES MADE TO THE BUILDING THAT HAVE CHANGED BOTH THE AREA AND THE VOLUME. THE FOLLOWING CHANGES HAVE BEEN MADE TO THE BUILDING FOOTPRINT OF THE BUILDING:

1. THE BUILDING IS APPROXIMATELY 9' LONGER IN THE EAST-WEST DIRECTION.
2. THE STAIRWAY ON THE NORTH HAS BEEN MADE LARGER.
3. THE STAIRWAY ON THE SOUTH HAS BEEN COMPLETELY ENCLOSED.
4. THE SECOND FLOOR IS APPROXIMATELY 20' LONGER IN THE EAST-WEST DIRECTION THAN WHAT WAS SHOWN IN 1982 DRAWING.
5. TWO MECHANICAL CHASES HAVE BEEN ADDED TO THE SECOND FLOOR.

THE BUILDING VOLUME HAS INCREASED FOR THE FOLLOWING REASONS:

1. SINCE THE BUILDING FOOTPRINT HAS GOTTEN LARGER THAT ALSO INCREASES THE VOLUME.
2. BOTH THE ROOFS OF THE GROUND FLOOR HAVE HAD A SECOND FRAMED ROOF ADDED TO PROVIDE PROPER DRAINAGE.
3. THE 1982 DRAWINGS SHOW THE HEIGHT OF THE ENTIRE GROUND FLOOR BEING 15'. THIS WAS IN ERROR. THE WESTERN PORTION OF THE GROUND FLOOR HAS ALWAYS BEEN APPROXIMATELY 15'.

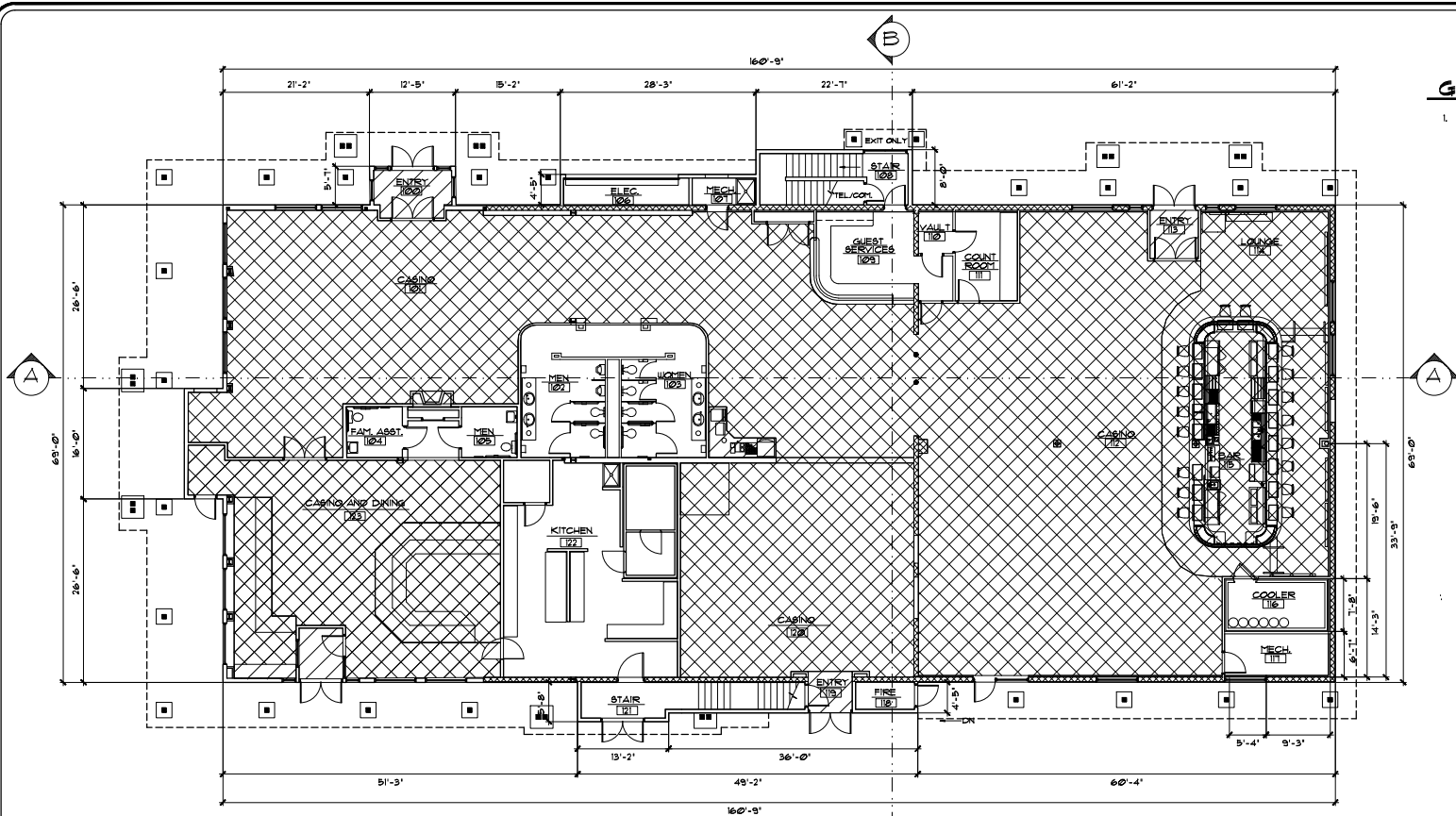
SHEET G3 SHOWS THE CALCULATIONS FOR DETERMINING THE CURRENT BUILDING VOLUME.

Architect •
FRANK WOODLUFF
 200 South Main Street Suite A • P.O. Box 290 • Fallon, Nevada 89405
 (775) 423-0085

PHASE I IMPROVEMENT PLANS
 FOR
TAHOE NUGGET BUILDING
 177 US HIGHWAY 60, STATELINE, NEVADA

Date: MAY 16, 2022
 Drawn By: PJW/IT
 Reviewed:
 Sheet Number
G1

Charlie Donohue
 Re: Request to Recently Base Data
 Tahoe Nugget (formerly Er's Tahoe Nugget)
 Project No. 2022-0001
 Exhibit F, pg 2 of 4



GENERAL NOTES

1. THIS SHEET REPRESENTS THE ANTICIPATED MAXIMUM CASINO BUILD OUT. THIS CASINO BUILD OUT MAY HAPPEN OVER A PERIOD OF APPROXIMATELY 5 TO 7 YEARS BASED ON THE LEASES OF THE TWO REMAINING BUILDING TENANTS.

FLOOR SUMMARY TABLE

FIRST FLOOR CALCULATIONS	SQ. FT.	HEIGHT FT.	VOLUME CU. FT.
PRIVATE	0		
FUBLIC	11,789	13'-8" TO 15'-5"	173,134
BASE	8,550	13'-8" TO 15'-5"	
GAMING	8,303	13'-8" TO 15'-5"	
NON-BASE	3,239	13'-8" TO 15'-5"	
SECOND FLOOR CALCULATIONS	SQ. FT.	HEIGHT FT.	VOLUME CU. FT.
PRIVATE	0		
FUBLIC	4,714	11'-0"	51,711
BASE	0	11'-0"	
GAMING	0	11'-0"	
NON-BASE	4,714	11'-0"	
BUILDING TOTALS	SQ. FT.	HEIGHT FT.	VOLUME CU. FT.
PRIVATE	0		
FUBLIC	16,503		224,845
BASE	8,550		
GAMING	8,303		
NON-BASE	8,013		

PROJECT COMPLETION PLAN

SCALE 1/8"=1'-0"



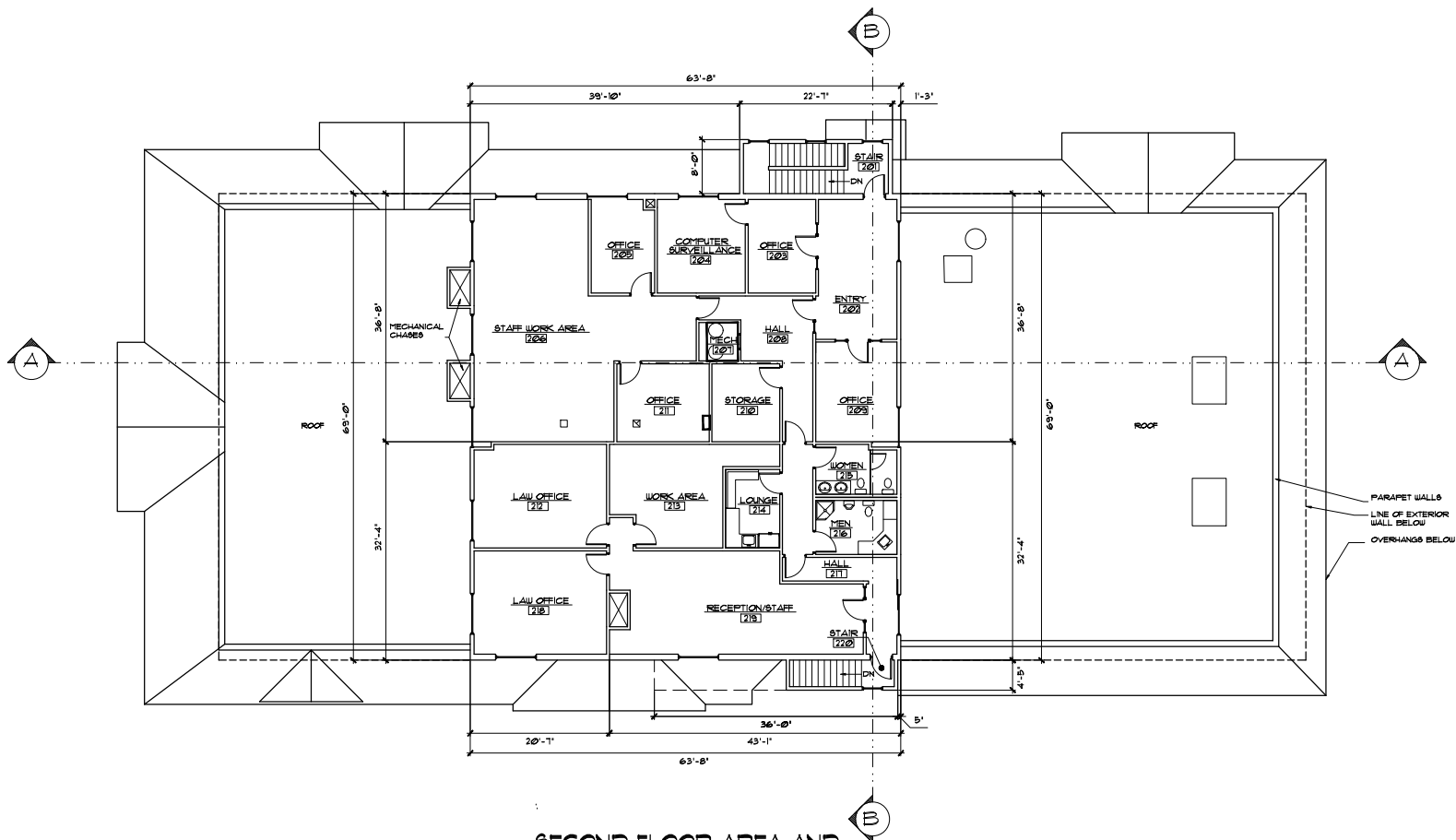
• Architect •
FRANK WOODLUFF
 200 South Main Street Suite A • P.O. Box 290 • Fallon, Nevada 89405
 (775) 423-0065



PHASE 1 IMPROVEMENT PLANS
 FOR
TAHOE NUGGET BUILDING
 177 US HIGHWAY 60, STATELINE, NEVADA




Date: MAY 16, 2022
 Drawn By: PJW/LL
 Reviewed By: [Signature]

Sheet Number
G2



GAMING AREAS

SECOND FLOOR

	NON-BASE AREA	4,714 SF.
	BASE AREA	0 SF.
	GAMING AREA	0 SF.

SECOND FLOOR AREA AND VOLUME

SECOND FLOOR FOOTPRINT	4,714 SF.
SECOND FLOOR VOLUME	51,711 CF.

GENERAL NOTES

1. THERE WILL BE VERY FEW CHANGES MADE TO THE EXISTING SECOND FLOOR. ONE OF THE EXISTING OFFICES WILL BE MODIFIED TO BE USED AS A COMPUTER AND SURVEILLANCE ROOM. A CURRENT EQUIPMENT ROOM WILL BE MODIFIED TO PROVIDE A MECHANICAL CHASE FOR HVAC FOR THE CASINO AREA BELOW.

SECOND FLOOR IMPROVEMENT PLAN

SCALE 1/8"=1'-0"



• Architect •
FRANK WOODLIFF
 200 South Main Street Suite A • P.O. Box 260 • Fallon, Nevada 89405
 (775) 423-0065



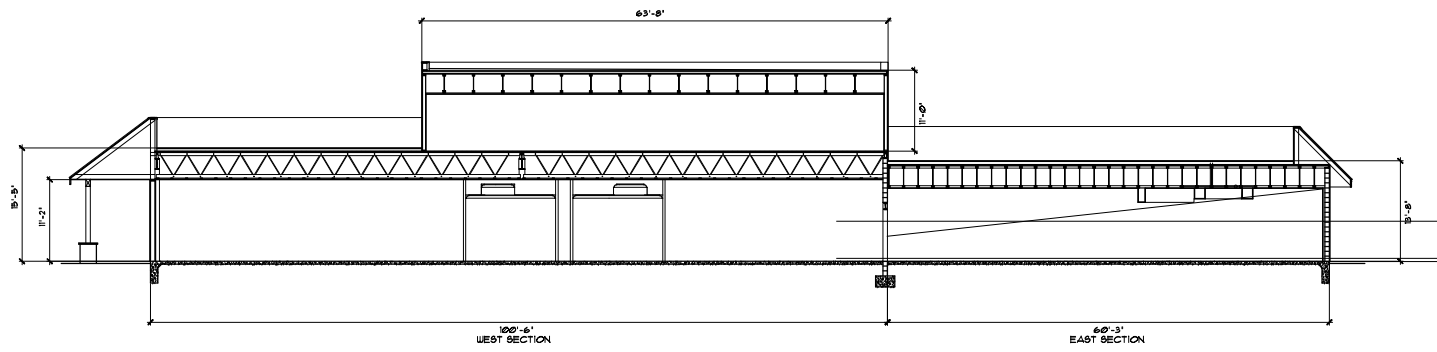
PHASE 1 IMPROVEMENT PLANS
 FOR
TAHOE NUGGET BUILDING
 177 US HIGHWAY 60, STATELINE, NEVADA

Date: MAY 16, 2022
 Drawn By: FWH
 Revisors:

Sheet Number

G3

Charlie Donohue
 Re: Request to Reconfirm Base Data
 Tahoe Nugget (formerly Ed's Tahoe Nugget)
 177 US Highway 50, Stateline, NV
 Exhibit F Pg 4 of 4



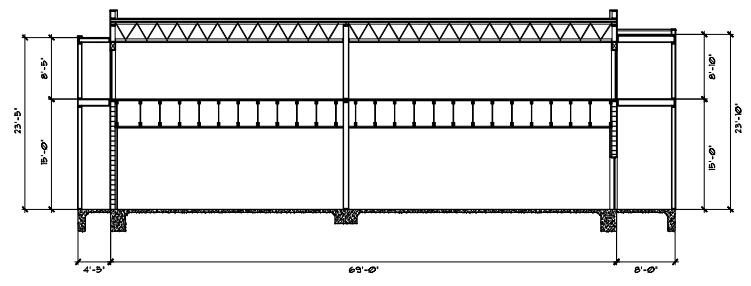
BUILDING SECTION A

SCALE 1/4"=1'-0"

BUILDING VOLUME CALCULATIONS

GROUND FLOOR WEST SECTION 6,934 SF. X 15.42 FT. =	106,922 CF.
GROUND FLOOR ENTRIES, WEST AND 100 198 SF. X 11.11 FT. =	1,769 CF.
GROUND FLOOR NORTH STAIR 108 181 SF. X 15.0 FT. =	2,715 CF.
GROUND FLOOR SOUTH STAIR 121, FIRE 119 234 SF. X 15.0 FT. =	3,510 CF.
GROUND FLOOR, ELEC. 106, MECH. 101 129 SF. X 11.11 FT. =	1,396 CF.
GROUND FLOOR, EAST SECTION 4,181 SF. X 13.67 FT. =	56,826 CF.
SECOND FLOOR 4,434 SF. X 11.00 =	48,714 CF.
SECOND FLOOR NORTH STAIR, 201 181 SF. X 8.83 =	1,598 CF.
SECOND FLOOR SOUTH STAIR, 220 199 SF. X 8.42 =	1,339 CF.
TOTAL BUILDING VOLUME	224,845 CF.

NOTE:
 THE VOLUME CALCULATIONS WERE DONE USING
 RECTANGULAR BOXES SO THAT THE RESULTS WILL BE
 SIMILAR TO THE METHOD USED FOR THE SOUTH TAHOE
 NUGGET IN 1987. THE VOLUMES IN THE ENCLOSED
 OVERHANGS AND ABOVE THE COVERED ENTRIES OF THE
 CURRENT PROPERTY ARE NOT INCLUDED.



BUILDING SECTION B

SCALE 1/4"=1'-0"

Architect •
FRANK WOODLUFF
 200 South Main Street Suite A • P.O. Box 290 • Fallon, Nevada 89405
 (775) 423-0065

PHASE 1 IMPROVEMENT PLANS
 FOR
TAHOE NUGGET BUILDING
 177 US HIGHWAY 50, STATELINE, NEVADA

Date: MAY 16, 2023
 Drawn By: FWH
 Revisions:
 Sheet Number
G4