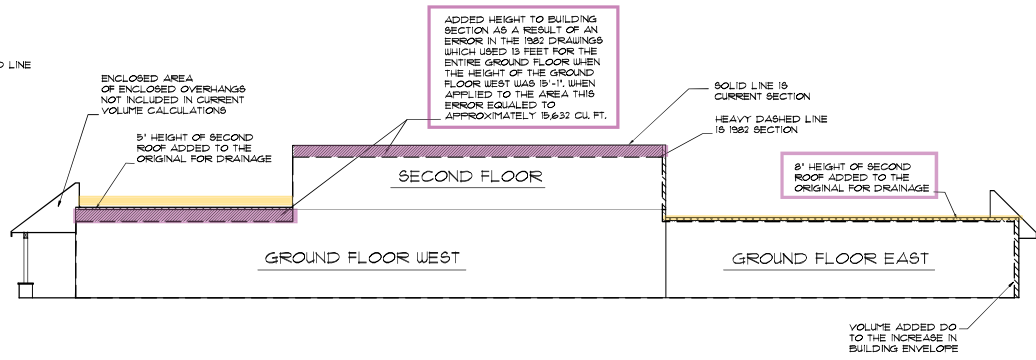
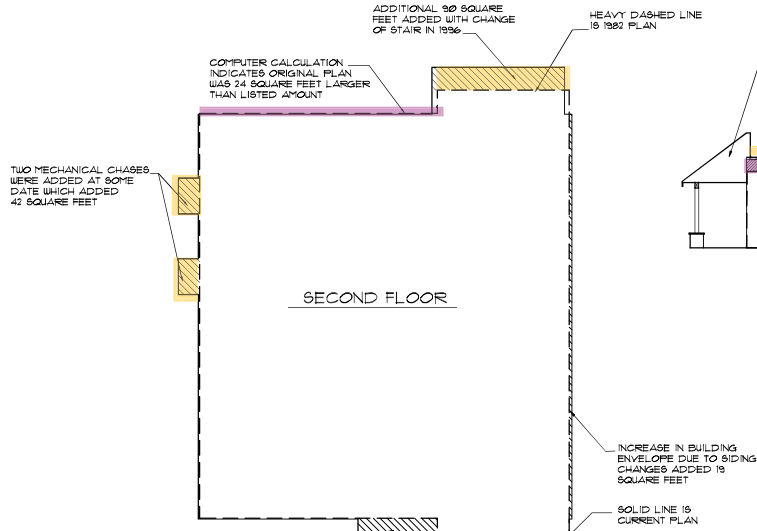
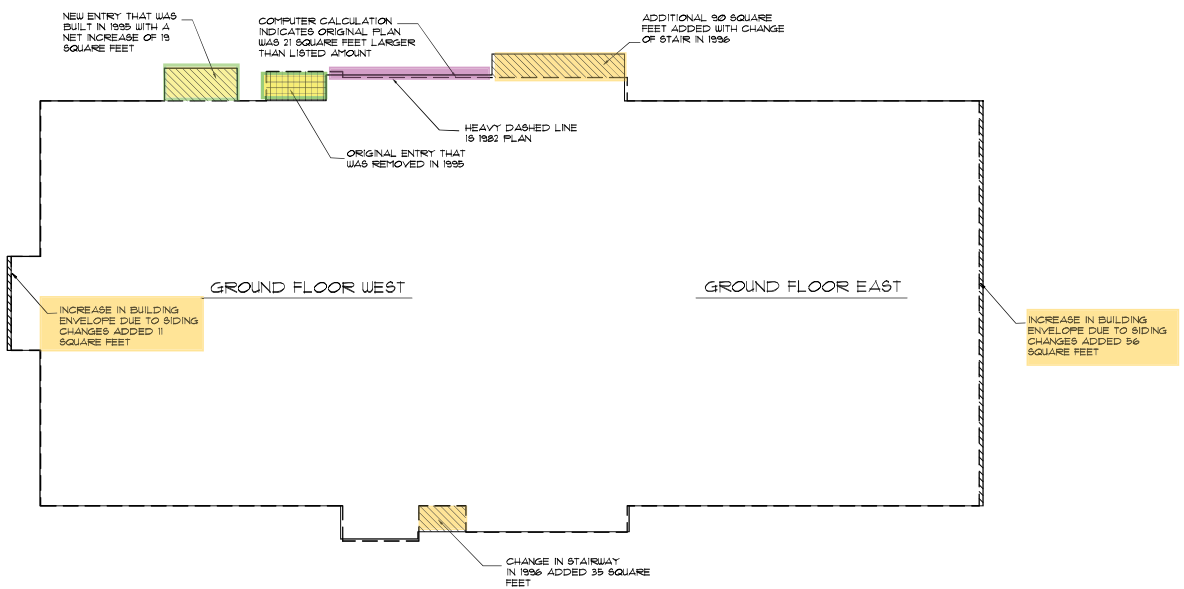


Chadler Donohue  
 Re: Request to Reconstruct Base Data  
 for the Tahoe Nugget Building  
 September 19, 2022  
 Exhibit A3 pg. 1 of 1






**VOLUME COMPARISON BETWEEN 1982 AND CURRENT**  
 SCALE 1"=10'-0"



**AREA COMPARISON BETWEEN 1982 AND CURRENT**  
 SCALE 1"=10'-0"

NOTE:  
 FOR COMPARISON PURPOSES THE FOOTPRINTS OF THE 1982 DRAWINGS WERE CREATED USING THE DIMENSIONS LISTED ON THE 1982 DRAWINGS. THE CURRENT FOOTPRINTS WERE THEN OVERLAYED ON THE CREATED 1982 PLANS AND THE DIFFERENCES BETWEEN THE TWO HIGHLIGHTED WITH HATCHES. THE FLOOR PLAN AREAS AND AREAS OF THE DIFFERENCES WERE CALCULATED BY THE AREA TOOLS PROVIDED IN AUTOCAD SOFTWARE.  
 THE SAME COMPARISON TECHNIQUE WAS ALSO USED FOR THE BUILDING SECTIONS TO INDICATE DIFFERENCES IN THE BUILDING HEIGHTS.

KEY	
	-Proposed Corrections to 1987 Base Data
	-TRPA Approved changes to the building
	-NTRPA Approved changes to building

Architect •  
**FRANK WOODLUFF**  
 200 South Main Street Suite A • P.O. Box 290 • Fallon, Nevada 89405  
 (775) 423-0065



PHASE 1 IMPROVEMENT PLANS  
 FOR  
**TAHOE NUGGET BUILDING**  
 177 US. HIGHWAY 50, STATELINE, NEVADA

Date: JULY 18, 2023  
 Drawn By: FWH  
 Revisions:

Sheet Number  
**G5**