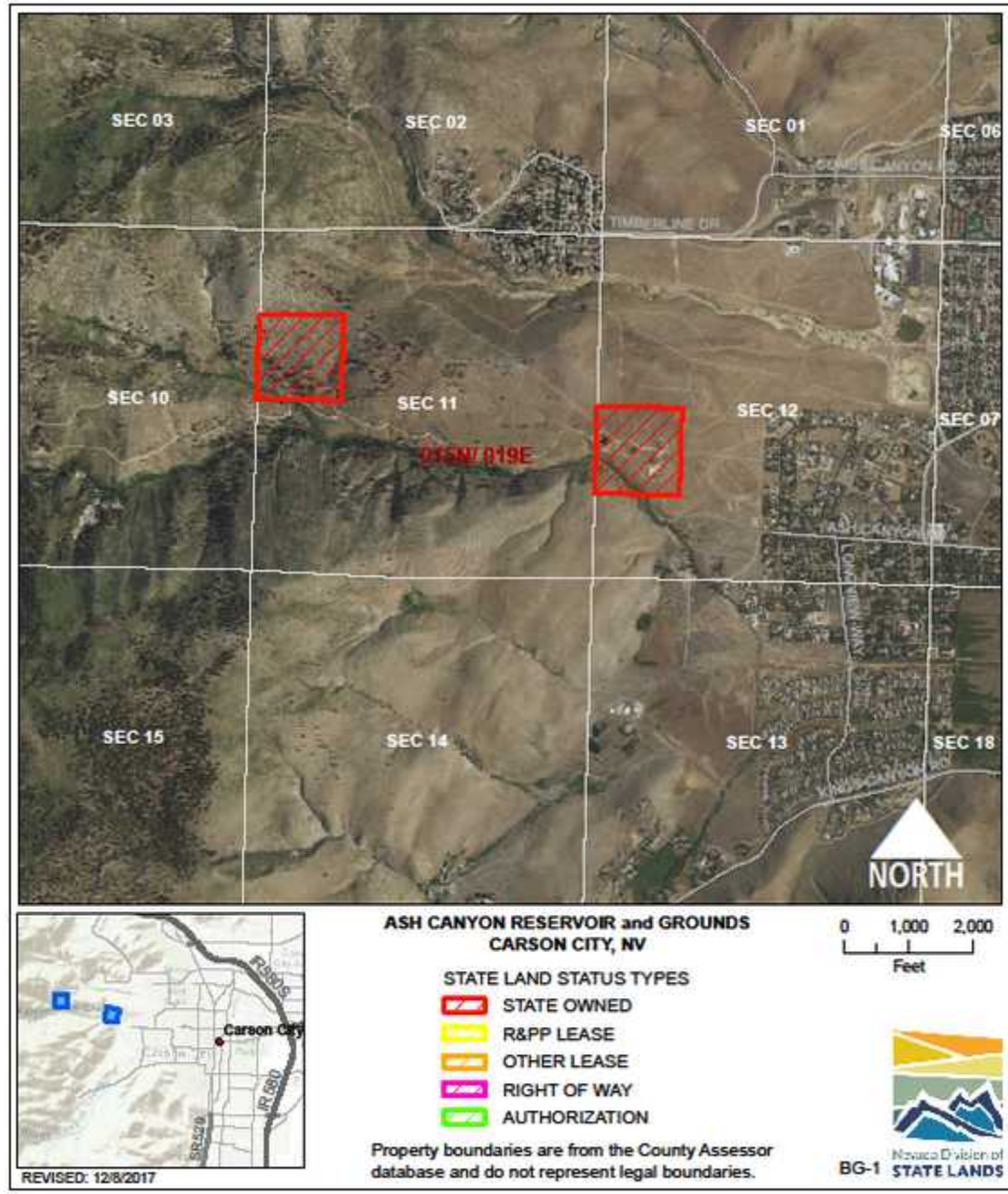


## BUILDINGS AND GROUNDS



**BUILDINGS AND GROUNDS: ASH CANYON RESERVOIR BG-1**

**LOCATION:** 1 mile west of end of Ash Canyon Road, Carson City

**ACRES:** 79.61

**USE/AGENCY:** Infrastructure/B&G

**MEETS AGENCY LAND NEEDS (Y/N/STRATEGIC):** Y

**PERFORMING ASSET (Y/N/PARTIAL):** P

**ISSUES/RESTRICTIONS:** Part of Marlette Lake Water System

**RECOMMENDATIONS:** Retain for agency operations, upgrade.



**BUILDINGS AND GROUNDS: STATE CAPITOL BG-2**

**LOCATION:** 101 North Carson Street, Carson City

**ACRES:** 3.92

**USE/AGENCY:** Offices, support/Multiple

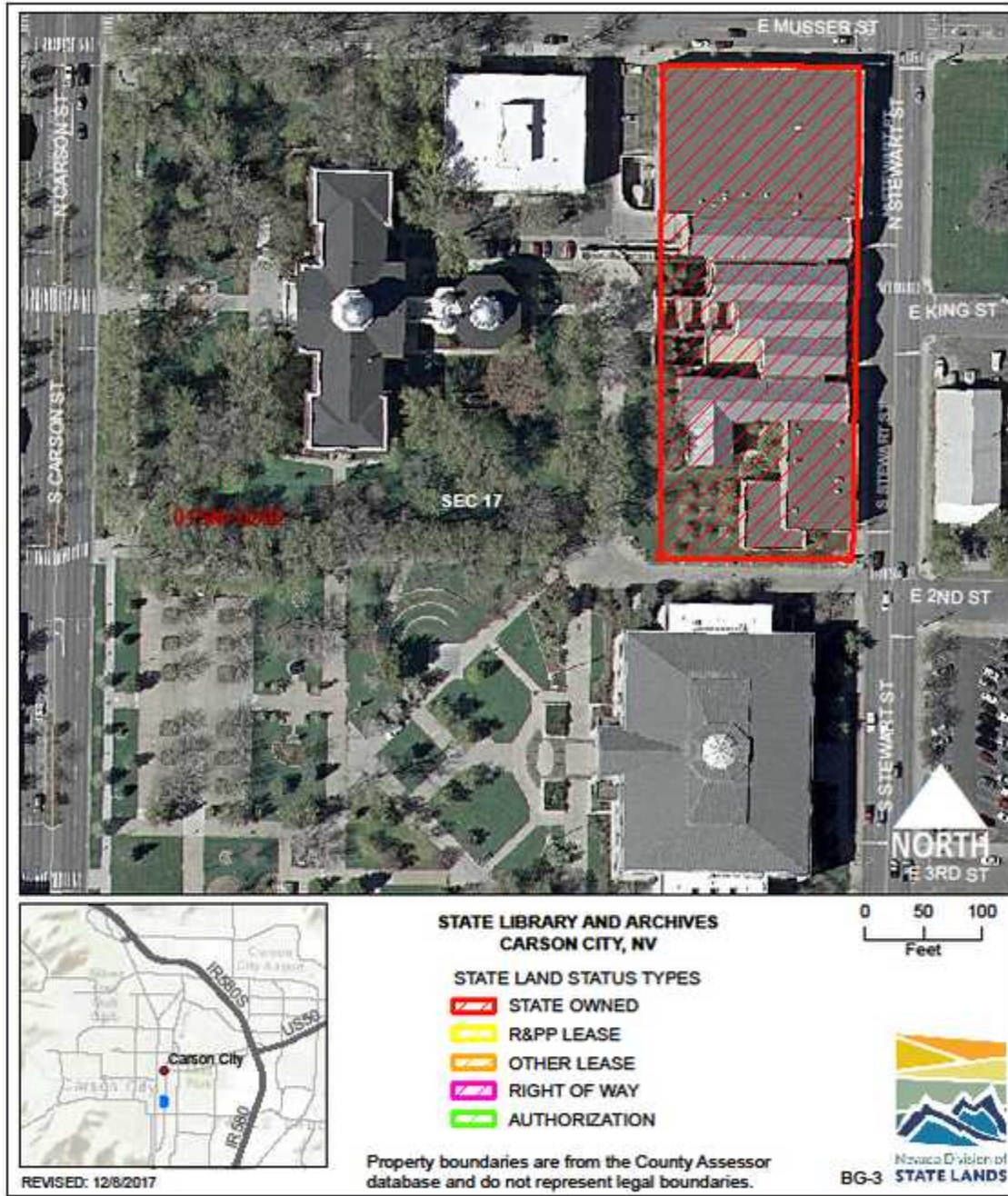
**MEETS AGENCY LAND NEEDS (Y/N/STRATEGIC):** Y

**PERFORMING ASSET (Y/N/PARTIAL):** Y

**ISSUES/RESTRICTIONS:** Part of Capital Complex Master Plan

**RECOMMENDATIONS:** Retain for agency operations.





**BUILDINGS AND GROUNDS: STATE LIBRARY AND ARCHIVES BG-3**

**LOCATION:** 100 North Stewart Street, Carson City

**ACRES:** 1.62

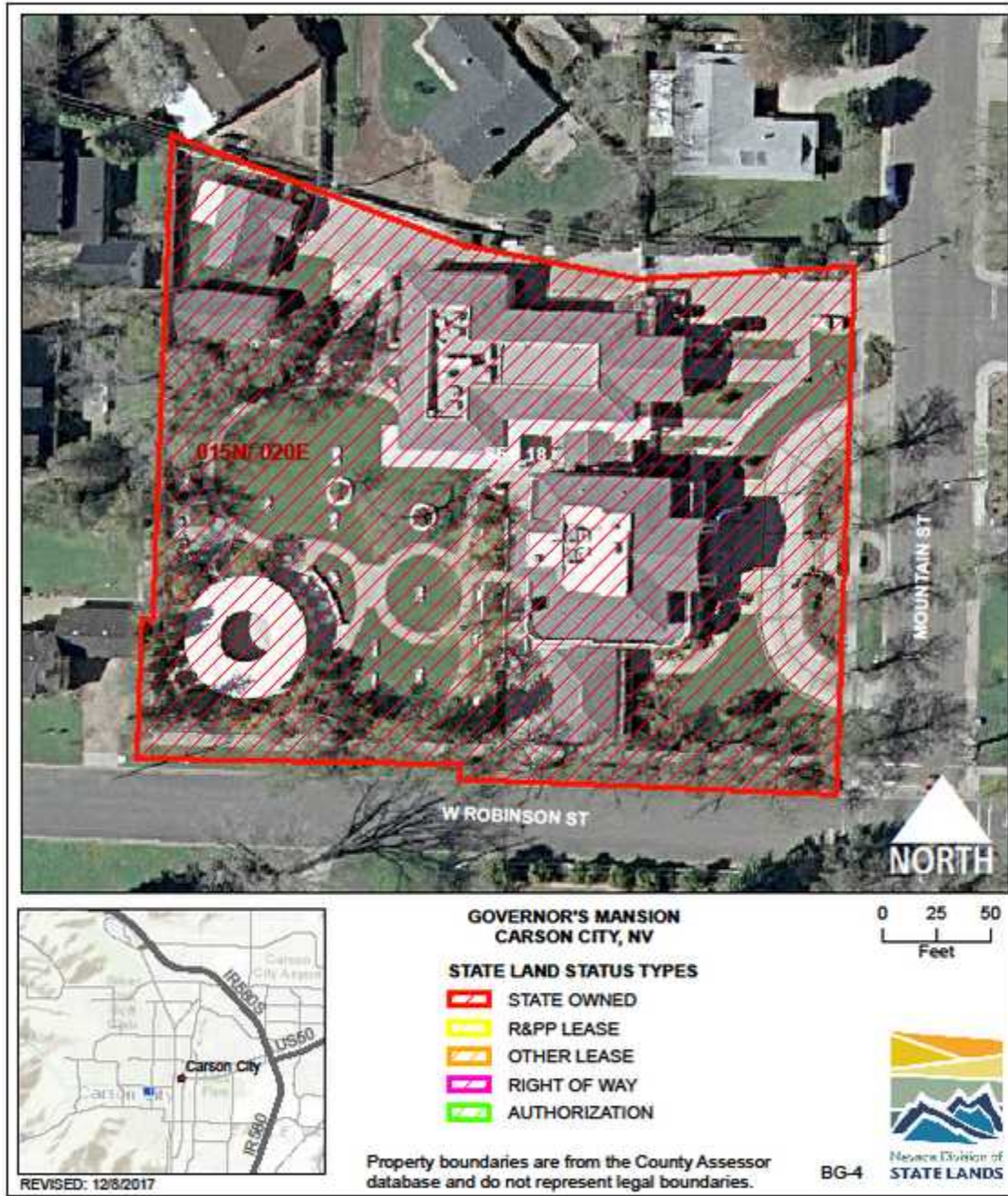
**USE/AGENCY:** Offices/State Library

**MEETS AGENCY LAND NEEDS (Y/N/STRATEGIC):** Y

**PERFORMING ASSET (Y/N/PARTIAL):** Y

**ISSUES/RESTRICTIONS:** Part of Capital Complex Master Plan

**RECOMMENDATIONS:** Retain for agency operations.



**BUILDINGS AND GROUNDS: GOVERNORS MANSION BG-4**

**LOCATION:** 606 Mountain Street, Carson City

**ACRES:** 1.82

**USE/AGENCY:** Residence/Administration

**MEETS AGENCY LAND NEEDS (Y/N/STRATEGIC):** Y

**PERFORMING ASSET (Y/N/PARTIAL):** Y

**ISSUES/RESTRICTIONS:** Historic.

**RECOMMENDATIONS:** Retain for agency operations.





**BUILDINGS AND GROUNDS: AG OFFICE AND HEROES MONUMENT BG-5**

**LOCATION:** 100 North Carson Street, Carson City

**ACRES:** 1.64

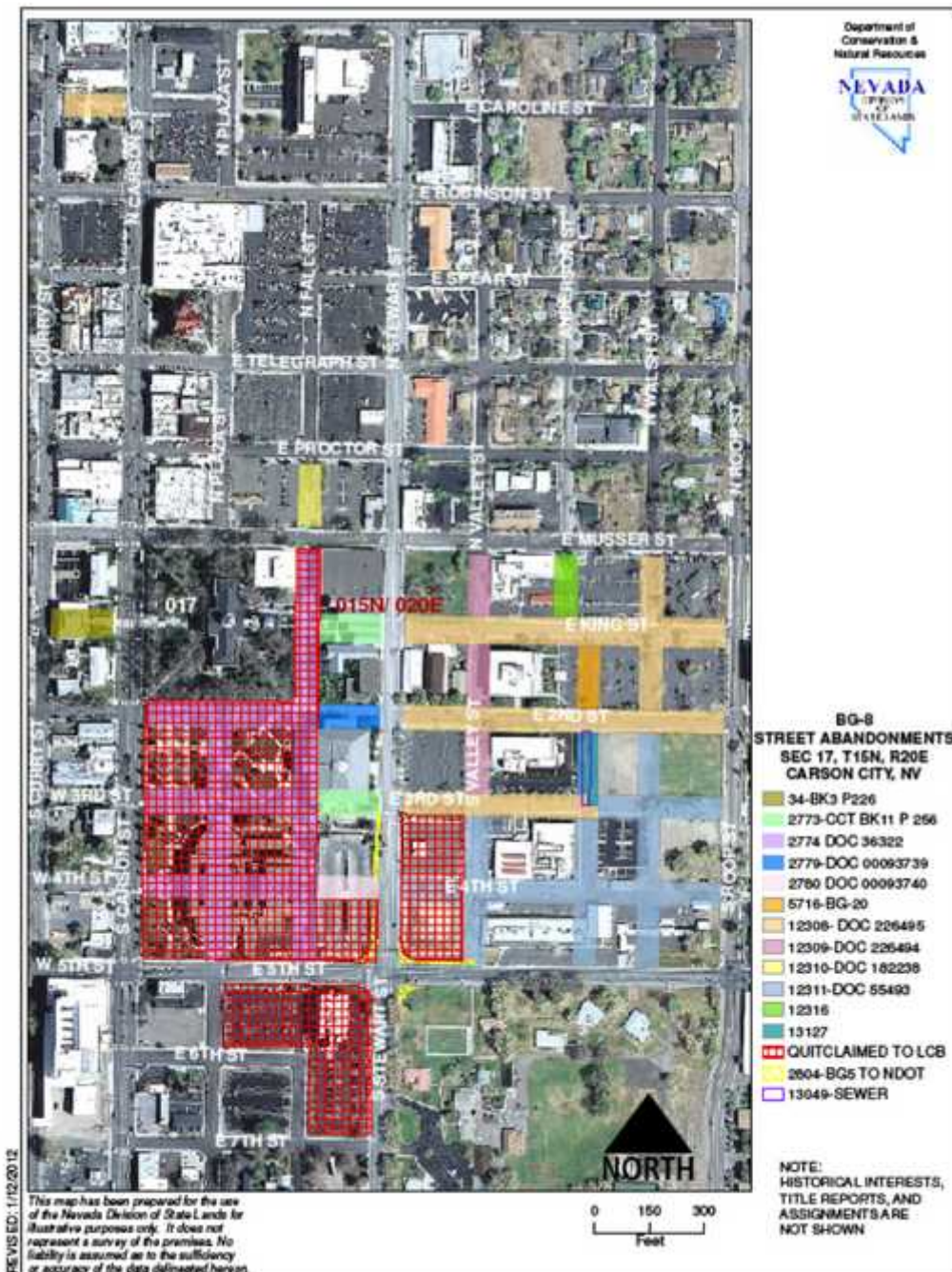
**USE/AGENCY:** Offices/AG Office

**MEETS AGENCY LAND NEEDS (Y/N/STRATEGIC):** Y

**PERFORMING ASSET (Y/N/PARTIAL):** Y

**ISSUES/RESTRICTIONS:** Part of Capital Complex Master Plan, historic.

**RECOMMENDATIONS:** Retain for agency operations.



**BUILDINGS AND GROUNDS: STREET ABANDONMENTS BG-8**

**LOCATION:** Capitol area, east of Stewart Street

**ACRES:** Acreage covered in adjacent properties

**USE/AGENCY:** Infrastructure/BG

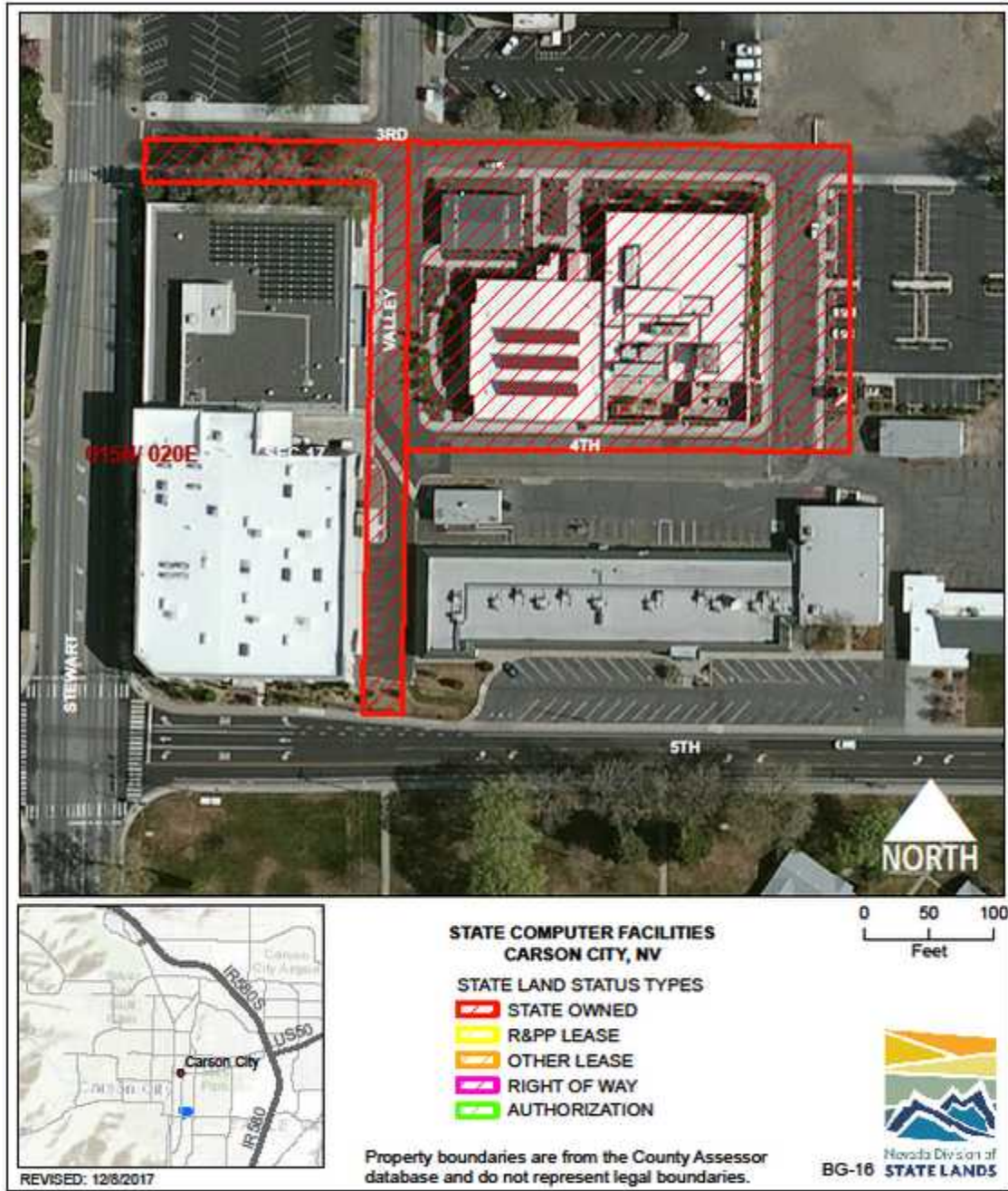
**MEETS AGENCY LAND NEEDS (Y/N/STRATEGIC):** Y

**PERFORMING ASSET (Y/N/PARTIAL):** Y

**ISSUES/RESTRICTIONS:** Part of Capitol Complex Master Plan, easement restrictions.

**RECOMMENDATIONS:** Retain for future agency operations.





**BUILDINGS AND GROUNDS:** \_\_\_\_\_ **COMPUTER FACILITIES BG-16**  
**LOCATION:** 575 E Third Street, Carson City  
**ACRES:** 2.27  
**USE/AGENCY:** Offices, support/BG  
**MEETS AGENCY LAND NEEDS (Y/N/STRATEGIC):** Y  
**PERFORMING ASSET (Y/N/PARTIAL):** Y  
**ISSUES/RESTRICTIONS:** Street abandonment easement restrictions, part of Capital Complex Master Plan.  
**RECOMMENDATIONS:** Retain for agency operations.



**BUILDINGS AND GROUNDS: PARKING LOT N OF PRINTING OFFICE BG-17**

**LOCATION:** NE Corner 3<sup>rd</sup> and Stewart Streets, Carson City

**ACRES:** 1.11

**USE/AGENCY:** Parking Lot/B&G

**MEETS AGENCY LAND NEEDS (Y/N/STRATEGIC):** Y

**PERFORMING ASSET (Y/N/PARTIAL):** Y

**ISSUES/RESTRICTIONS:** Part of Capital Complex Master Plan

**RECOMMENDATIONS:** Retain for agency operations.







**BUILDINGS AND GROUNDS: LOT SE CORNER MUSSEY AND STEWART BG-27**

**LOCATION: NE Corner King and Stewart Streets, Carson City**

**ACRES: 0.98**

**USE/AGENCY: Vacant/B&G**

**MEETS AGENCY LAND NEEDS (Y/N/STRATEGIC): S**

**PERFORMING ASSET (Y/N/PARTIAL): P**

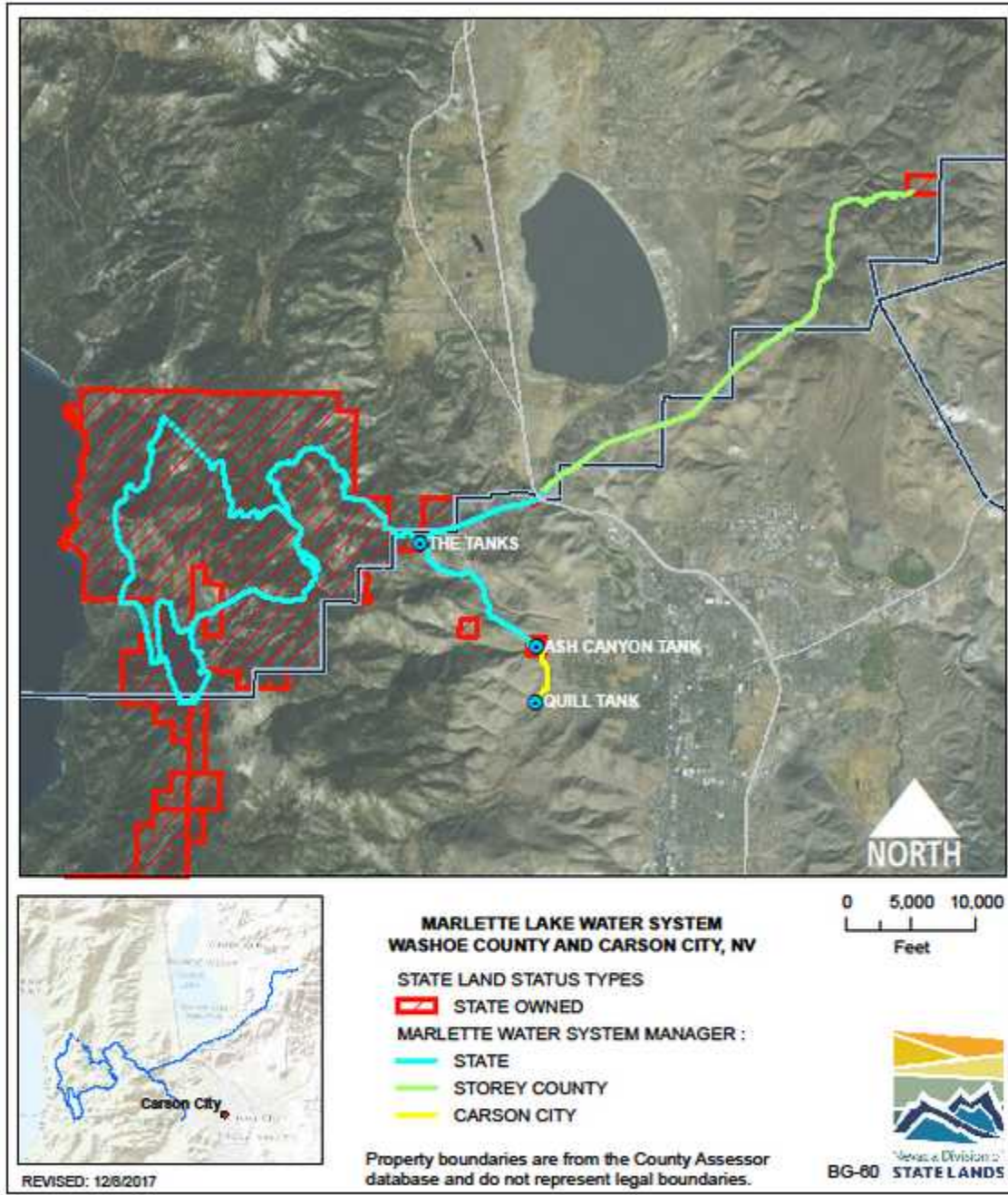
**ISSUES/RESTRICTIONS: Part of Capital Complex Master Plan**

**RECOMMENDATIONS: Retain for agency operations.**





**BUILDINGS AND GROUNDS:** CAMPOS BUILDING BG-47  
**LOCATION:** 215 East Bonanza Road, Las Vegas, Clark County  
**ACRES:** 1.70  
**USE/AGENCY:** Offices/Administration  
**MEETS AGENCY LAND NEEDS (Y/N/STRATEGIC):** Y  
**PERFORMING ASSET (Y/N/PARTIAL):** Y  
**ISSUES/RESTRICTIONS:**  
**RECOMMENDATIONS:** Retain for agency operations.



**BUILDINGS AND GROUNDS: MARLETTE LAKE WATER SYSTEM-OVERVIEW BG-60**

**LOCATION:** Carson Range, Carson City and Washoe County

**ACRES:** 0

**USE/AGENCY:** Infrastructure/B&G

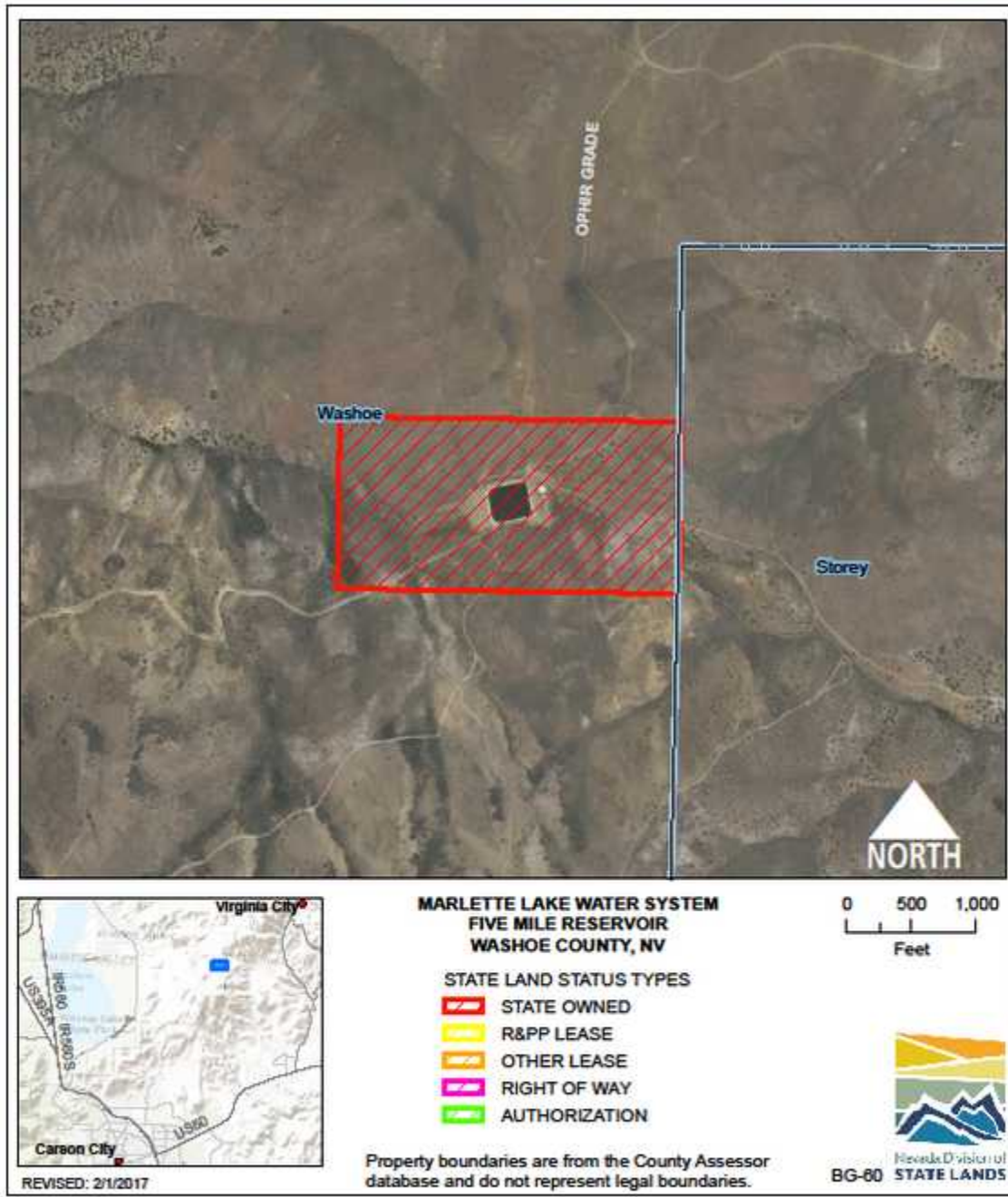
**MEETS AGENCY LAND NEEDS (Y/N/STRATEGIC):** Y

**PERFORMING ASSET (Y/N/PARTIAL):** Y

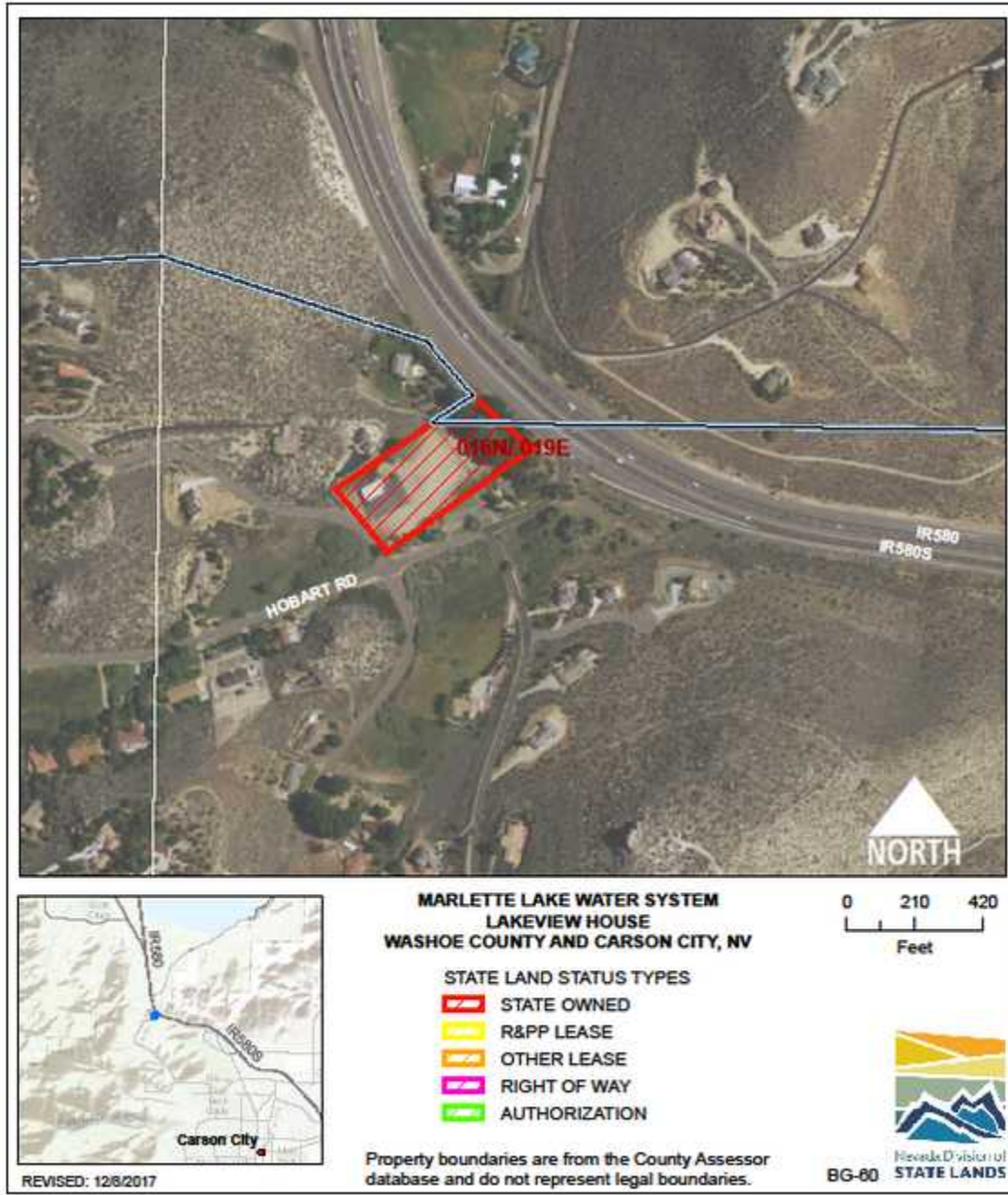
**ISSUES/RESTRICTIONS:**

**RECOMMENDATIONS:** Retain for agency operations.





**BUILDINGS AND GROUNDS:** FIVE MILE RESERVOIR BG-60  
**LOCATION:** Virginia Range, Washoe/Storey County Line  
**ACRES:** 80.01  
**USE/AGENCY:** Infrastructure/B&G  
**MEETS AGENCY LAND NEEDS (Y/N/STRATEGIC):** Y  
**PERFORMING ASSET (Y/N/PARTIAL):** Y  
**ISSUES/RESTRICTIONS:**  
**RECOMMENDATIONS:** Retain for agency operations.



**BUILDINGS AND GROUNDS: LAKEVIEW HOUSE BG-60**

**LOCATION: NW Corner Hobart Road and US395 Frontage, Carson City**

**ACRES: 2.97**

**USE/AGENCY: Infrastructure, residence/B&G**

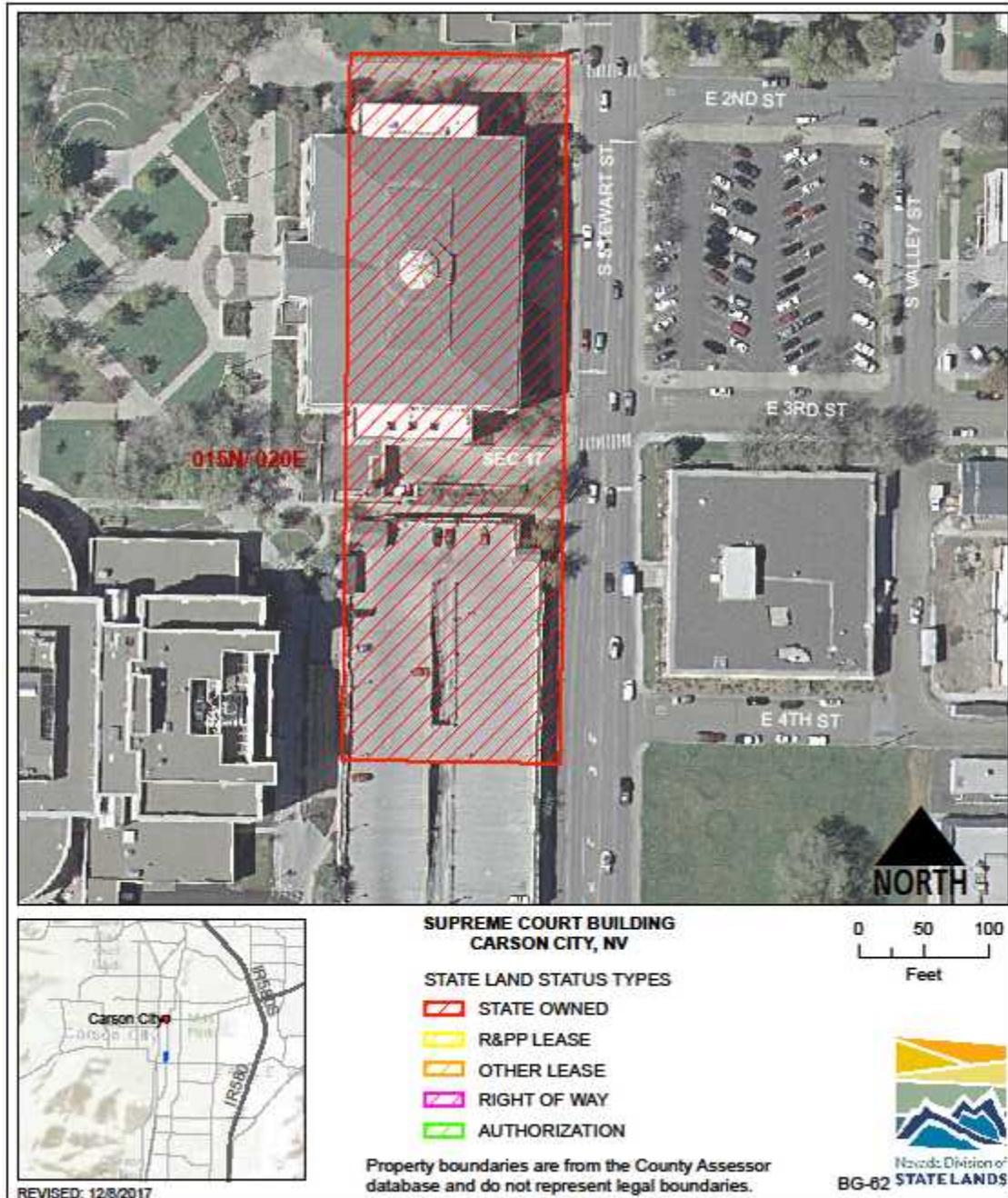
**MEETS AGENCY LAND NEEDS (Y/N/STRATEGIC): Y**

**PERFORMING ASSET (Y/N/PARTIAL): Y**

**ISSUES/RESTRICTIONS: Historic, Plans to rent for residential, however, poor insulation and other structural issues.**

**RECOMMENDATIONS: Retain for agency operations.**





**BUILDINGS AND GROUNDS: SUPREME COURT BUILDING BG-62**

**LOCATION:** 201 South Stewart, Carson City

**ACRES:** 2.07

**USE/AGENCY:**

**MEETS AGENCY LAND NEEDS (Y/N/STRATEGIC):** Y

**PERFORMING ASSET (Y/N/PARTIAL):** Y

**ISSUES/RESTRICTIONS:**

**RECOMMENDATIONS:** Retain for agency operations.



**BUILDINGS AND GROUNDS: BRADLEY COMPLEX BG-70**  
**LOCATION: 2621 East Sahara Avenue, Las Vegas, Clark County**  
**ACRES: 21.46**  
**USE/AGENCY: Offices, support/Agriculture Admin Site**  
**MEETS AGENCY LAND NEEDS (Y/N/STRATEGIC): Y**  
**PERFORMING ASSET (Y/N/PARTIAL): Y**  
**ISSUES/RESTRICTIONS:**  
**RECOMMENDATIONS: Retain for agency operations.**





**BUILDINGS AND GROUNDS: HUMAN RESOURCES 620 BELROSE BG-75**

**LOCATION:** 620 Belrose Street, Las Vegas, Clark County

**ACRES:** 1.99

**USE/AGENCY:** Offices/Human Resources

**MEETS AGENCY LAND NEEDS (Y/N/STRATEGIC):** Y

**PERFORMING ASSET (Y/N/PARTIAL):** Y

**ISSUES/RESTRICTIONS:**

**RECOMMENDATIONS:** Retain for agency operations.



**BUILDINGS AND GROUNDS: PURCHASING WAREHOUSE BG-84**

**LOCATION:** 1054 South Commerce Street, Las Vegas, Clark County

**ACRES:** 0.95

**USE/AGENCY:** Offices, warehouse/State Purchasing - Administration

**MEETS AGENCY LAND NEEDS (Y/N/STRATEGIC):** N

**PERFORMING ASSET (Y/N/PARTIAL):** P

**ISSUES/RESTRICTIONS:** Bldg is vacant.

**RECOMMENDATIONS:** Determine agency needs, if none, lease or dispose.





**BUILDINGS AND GROUNDS: \_\_\_\_\_ SHOPS BG-89**

**LOCATION: 406 East 2<sup>nd</sup> Street, Carson City**

**ACRES: 1.14**

**USE/AGENCY: Offices, shops/B&G**

**MEETS AGENCY LAND NEEDS (Y/N/STRATEGIC): Y**

**PERFORMING ASSET (Y/N/PARTIAL): Y**

**ISSUES/RESTRICTIONS: Part of Capital Complex Master Plan, includes historic National Guard building, vacant, pending historic retrofit.**

**RECOMMENDATIONS: Retain for agency operations.**



**BUILDINGS AND GROUNDS: PURCHASING WAREHOUSE BG-90**

**LOCATION:** 2250 Barnett Way, Reno, NV Reno, Washoe County

**ACRES:** 3.52

**USE/AGENCY:** Offices, warehouse/Administration

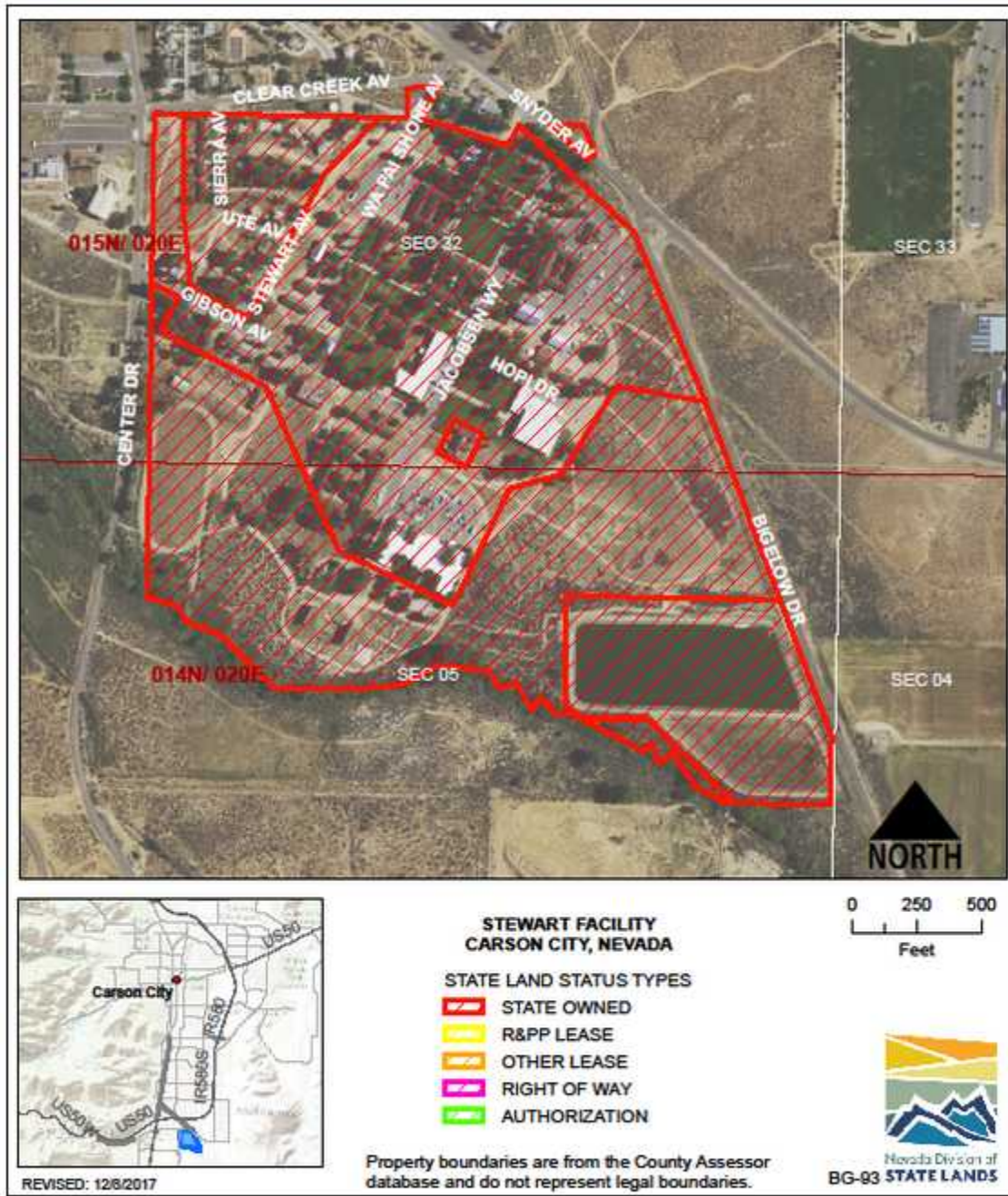
**MEETS AGENCY LAND NEEDS (Y/N/STRATEGIC):** Y

**PERFORMING ASSET (Y/N/PARTIAL):** Y

**ISSUES/RESTRICTIONS:**

**RECOMMENDATIONS:** Retain for agency operations.





**BUILDINGS AND GROUNDS: STEWART FACILITY BG-93**

**LOCATION:** 5500 Snyder Avenue, Carson City

**ACRES:** 110.71

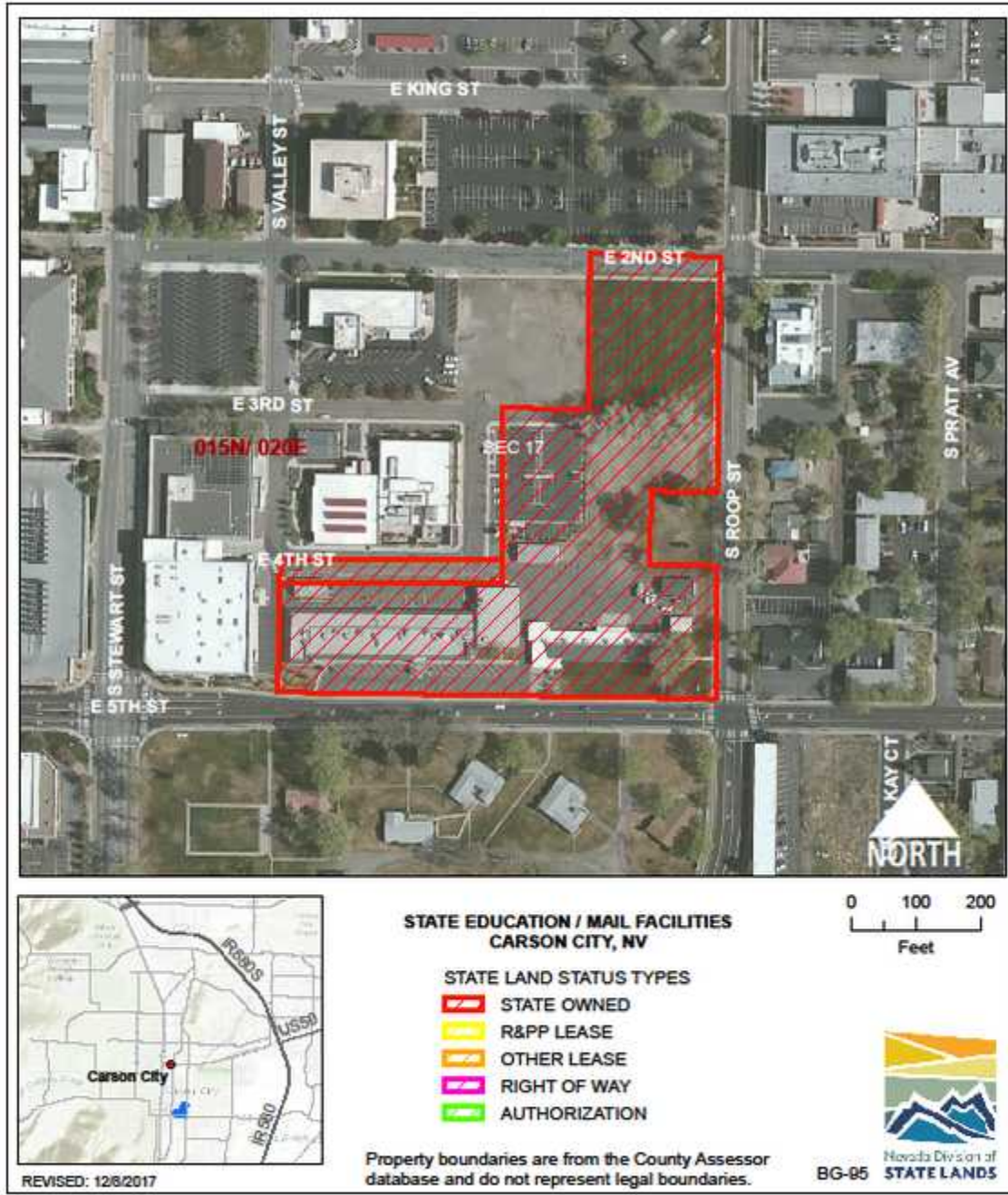
**USE/AGENCY:** Offices, support/Multiple

**MEETS AGENCY LAND NEEDS (Y/N/STRATEGIC):** Y

**PERFORMING ASSET (Y/N/PARTIAL):** P

**ISSUES/RESTRICTIONS:** Historic resource restrictions

**RECOMMENDATIONS:** Retain for agency operations.



**BUILDINGS AND GROUNDS: MAIL FACILITIES BG-95**

**LOCATION:** 700 East 5<sup>th</sup> Street, Carson City

**ACRES:** 5.81

**USE/AGENCY:** Offices, support, warehouse/B&G, Education

**MEETS AGENCY LAND NEEDS (Y/N/STRATEGIC):** Y

**PERFORMING ASSET (Y/N/PARTIAL):** Y

**ISSUES/RESTRICTIONS:** Part of Capital Complex Master Plan

**RECOMMENDATIONS:** Retain for agency operations.





**BUILDINGS AND GROUNDS: NORTH CAPITAL PARKING COMPLEX BG-96**

**LOCATION: NW corner Musser and Stewart Streets, Carson City**

**ACRES: 1.26**

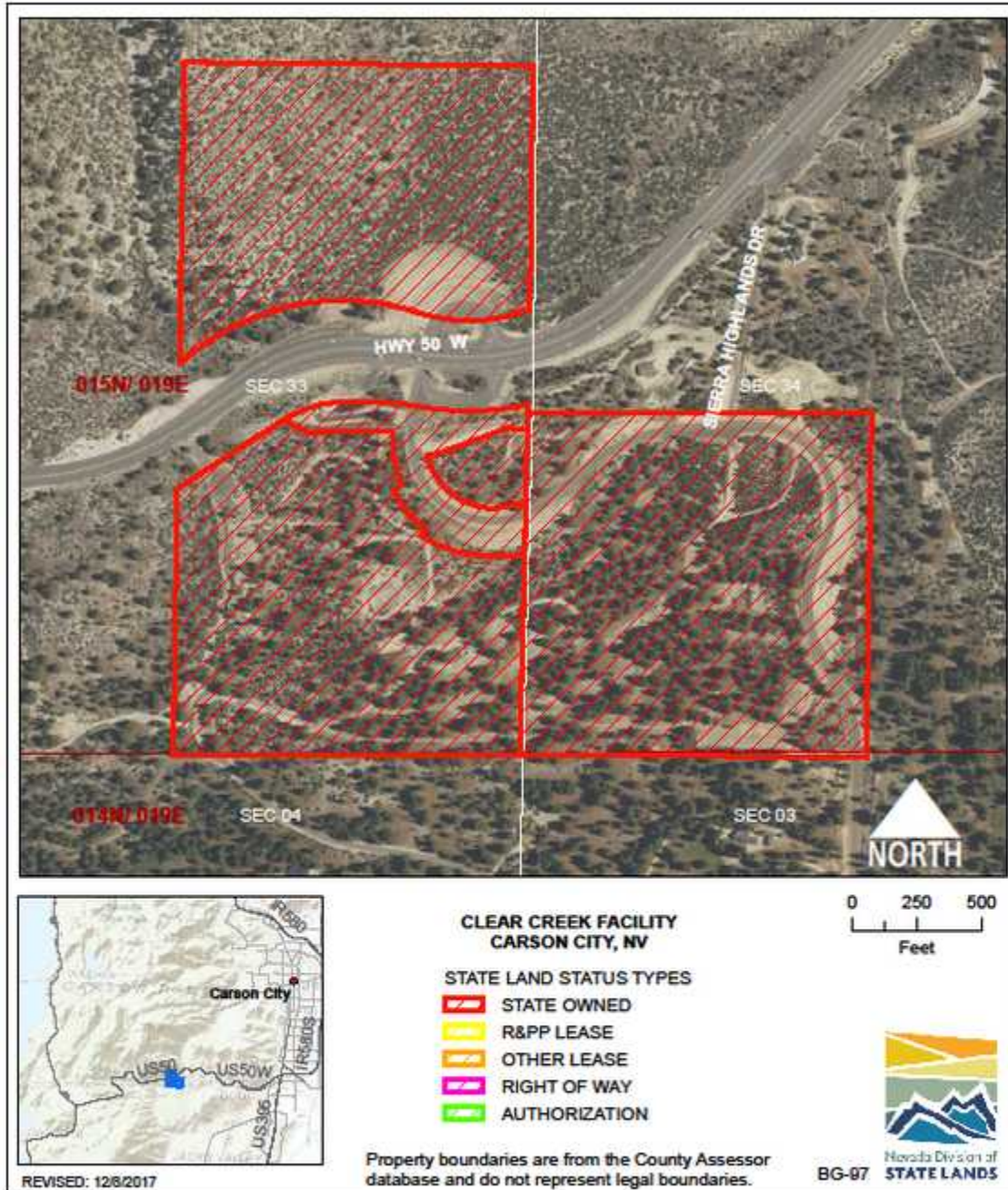
**USE/AGENCY: Infrastructure/B&G**

**MEETS AGENCY LAND NEEDS (Y/N/STRATEGIC): Y**

**PERFORMING ASSET (Y/N/PARTIAL): Y**

**ISSUES/RESTRICTIONS: Part of Capital Complex Master Plan**

**RECOMMENDATIONS: Retain for agency operations.**



**BUILDINGS AND GROUNDS: CLEAR CREEK FACILITY BG-97**

**LOCATION:** 8000 Old Clear Creek Road, Carson City

**ACRES:** 109.62

**USE/AGENCY:** Vacant/B&G

**MEETS AGENCY LAND NEEDS (Y/N/STRATEGIC):** S

**PERFORMING ASSET (Y/N/PARTIAL):** N

**ISSUES/RESTRICTIONS:**

**RECOMMENDATIONS:** Seek options for disposal or other uses.





**BUILDINGS AND GROUNDS: GRANT SAWYER BUILDING BG-98**

**LOCATION:** 555 East Washington Avenue, Las Vegas, Clark County

**ACRES:** 22.92

**USE/AGENCY:** Offices/Multiple, Administration

**MEETS AGENCY LAND NEEDS (Y/N/STRATEGIC):** Y

**PERFORMING ASSET (Y/N/PARTIAL):** Y

**ISSUES/RESTRICTIONS:**

**RECOMMENDATIONS:** Retain for agency operations.



**BUILDINGS AND GROUNDS: 303 SOUTH ROOP BG-99**  
**LOCATION: 303 South Roop Street, Carson City**  
**ACRES: 0.26**  
**USE/AGENCY: Vacant/B&G**  
**MEETS AGENCY LAND NEEDS (Y/N/STRATEGIC): S**  
**PERFORMING ASSET (Y/N/PARTIAL): P**  
**ISSUES/RESTRICTIONS: Part of Capital Complex Master Plan**  
**RECOMMENDATIONS: Retain for agency operations.**





**BUILDINGS AND GROUNDS: MEASON PIPELINE BG-100**

**LOCATION:** Carson Range, Carson City

**ACRES:** 0.81

**USE/AGENCY:** Infrastructure/B&G

**MEETS AGENCY LAND NEEDS (Y/N/STRATEGIC):** Y

**PERFORMING ASSET (Y/N/PARTIAL):** Y

**ISSUES/RESTRICTIONS:** Right-of-Way questionable, prescriptive use.

**RECOMMENDATIONS:** Retain for agency operations.



**BUILDINGS AND GROUNDS: 515 EAST MUSSER BG-102**

**LOCATION: 515 East Musser Street, Carson City**

**ACRES: 2.44**

**USE/AGENCY: Offices/B&G**

**MEETS AGENCY LAND NEEDS (Y/N/STRATEGIC): Y**

**PERFORMING ASSET (Y/N/PARTIAL): Y**

**ISSUES/RESTRICTIONS: Part of Capital Complex Master Plan**

**RECOMMENDATIONS: Retain for agency operations.**





**BUILDINGS AND GROUNDS: BRYAN BUILDING BG-103**

**LOCATION:** 901 South Stewart Street, Carson City

**ACRES:** 12.80

**USE/AGENCY:** Offices/DCNR, Administration

**MEETS AGENCY LAND NEEDS (Y/N/STRATEGIC):** Y/S

**PERFORMING ASSET (Y/N/PARTIAL):** Y

**ISSUES/RESTRICTIONS:** Part of Capital Complex Master Plan, includes vacant land on the east side.

**RECOMMENDATIONS:** Retain for agency operations.



**BUILDINGS AND GROUNDS:** DECATUR DMV BG-107  
**LOCATION:** 7170 North Decatur Blvd., Las Vegas, Clark County  
**ACRES:** 35.16  
**USE/AGENCY:** Offices, support/DMV, PS  
**MEETS AGENCY LAND NEEDS (Y/N/STRATEGIC):** Y  
**PERFORMING ASSET (Y/N/PARTIAL):** Y  
**ISSUES/RESTRICTIONS:** R&PP lease.  
**RECOMMENDATIONS:** Retain for agency operations, portion available for other agencies.





**BUILDINGS AND GROUNDS: HIGHWAY PATROL BG-109**

**LOCATION:** 357 Hammill Lane, Reno, Washoe County

**ACRES:** 2.59

**USE/AGENCY:** Offices, support/NHP

**MEETS AGENCY LAND NEEDS (Y/N/STRATEGIC):** Y

**PERFORMING ASSET (Y/N/PARTIAL):** Y

**ISSUES/RESTRICTIONS:**

**RECOMMENDATIONS:** Retain for agency operations.



**BUILDINGS AND GROUNDS:** HENDERSON DMV BG-110  
**LOCATION:** 1399 American Pacific Drive, Henderson, Clark County  
**ACRES:** 5.83  
**USE/AGENCY:** Offices, support/DMV  
**MEETS AGENCY LAND NEEDS (Y/N/STRATEGIC):** Y  
**PERFORMING ASSET (Y/N/PARTIAL):** Y  
**ISSUES/RESTRICTIONS:**  
**RECOMMENDATIONS:** Retain for agency operations.





**BUILDINGS AND GROUNDS: DMV HEADQUARTERS BG-111**

**LOCATION:** 555 Wright Way, Carson City

**ACRES:** 16.56

**USE/AGENCY:** Offices, support/DMV

**MEETS AGENCY LAND NEEDS (Y/N/STRATEGIC):** Y/S

**PERFORMING ASSET (Y/N/PARTIAL):** Y

**ISSUES/RESTRICTIONS:**

**RECOMMENDATIONS:** Retain for agency operations.



**BUILDINGS AND GROUNDS: GALLETTI DMV BG-112**

**LOCATION:** 305 Galletti Way, Reno, Washoe County

**ACRES:** 4.63

**USE/AGENCY:** Offices, support/DMV

**MEETS AGENCY LAND NEEDS (Y/N/STRATEGIC):** Y

**PERFORMING ASSET (Y/N/PARTIAL):** Y

**ISSUES/RESTRICTIONS:**

**RECOMMENDATIONS:** Retain for agency operations.





**BUILDINGS AND GROUNDS: CHILDRENS BEHAVIORAL SERVICES BG-114**

**LOCATION:** 2667 Enterprise Road, Reno, Washoe County

**ACRES:** 11.11

**USE/AGENCY:** Offices, support/Child and Family Services

**MEETS AGENCY LAND NEEDS (Y/N/STRATEGIC):** Y

**PERFORMING ASSET (Y/N/PARTIAL):** Y

**ISSUES/RESTRICTIONS:**

**RECOMMENDATIONS:** Retain for agency operations.



**BUILDINGS AND GROUNDS: DONOVAN WAY DMV BG-115**

**LOCATION:** 4110 Donovan Way, Las Vegas, Clark County

**ACRES:** 6.74

**USE/AGENCY:** Offices, support/DMV

**MEETS AGENCY LAND NEEDS (Y/N/STRATEGIC):** Y

**PERFORMING ASSET (Y/N/PARTIAL):** Y

**ISSUES/RESTRICTIONS:**

**RECOMMENDATIONS:** Retain for agency operations.





**BUILDINGS AND GROUNDS: FLAMINGO CIMARRON DMV BG-116**

**LOCATION:** 8250 West Flamingo Road, Las Vegas, Clark County

**ACRES:** 20.50

**USE/AGENCY:** Offices, support/DMV

**MEETS AGENCY LAND NEEDS (Y/N/STRATEGIC):** Y

**PERFORMING ASSET (Y/N/PARTIAL):** Y

**ISSUES/RESTRICTIONS:** R&PP patent.

**RECOMMENDATIONS:** Retain for agency operations, portion reserved for DPS.



**BUILDINGS AND GROUNDS: LAXALT BUILDING BG-117**

**LOCATION:** 401 North Carson Street, Carson City

**ACRES:** 0.66

**USE/AGENCY:** Offices/Multiple, Tourism

**MEETS AGENCY LAND NEEDS (Y/N/STRATEGIC):** Y

**PERFORMING ASSET (Y/N/PARTIAL):** Y

**ISSUES/RESTRICTIONS:** Historic, Cooperative agreement w/Carson City for plaza.

**RECOMMENDATIONS:** Retain for agency operations.





**BUILDINGS AND GROUNDS:**           OLD NATIONAL GUARD ARMORY BG-118            
**LOCATION:** 2525 South Carson Street, Carson City  
**ACRES:** 12.84  
**USE/AGENCY:** Vacant/National Guard  
**MEETS AGENCY LAND NEEDS (Y/N/STRATEGIC):** S  
**PERFORMING ASSET (Y/N/PARTIAL):** P  
**ISSUES/RESTRICTIONS:** Currently used for State storage and weather station.  
**RECOMMENDATIONS:** Retain for agency operations, currently vacated by the National Guard.



**BUILDINGS AND GROUNDS: CHILDRENS HOME BG-119**

**LOCATION:** 711 East 5<sup>th</sup> Street, Carson City

**ACRES:** 12.79

**USE/AGENCY:** Vacant/B&G

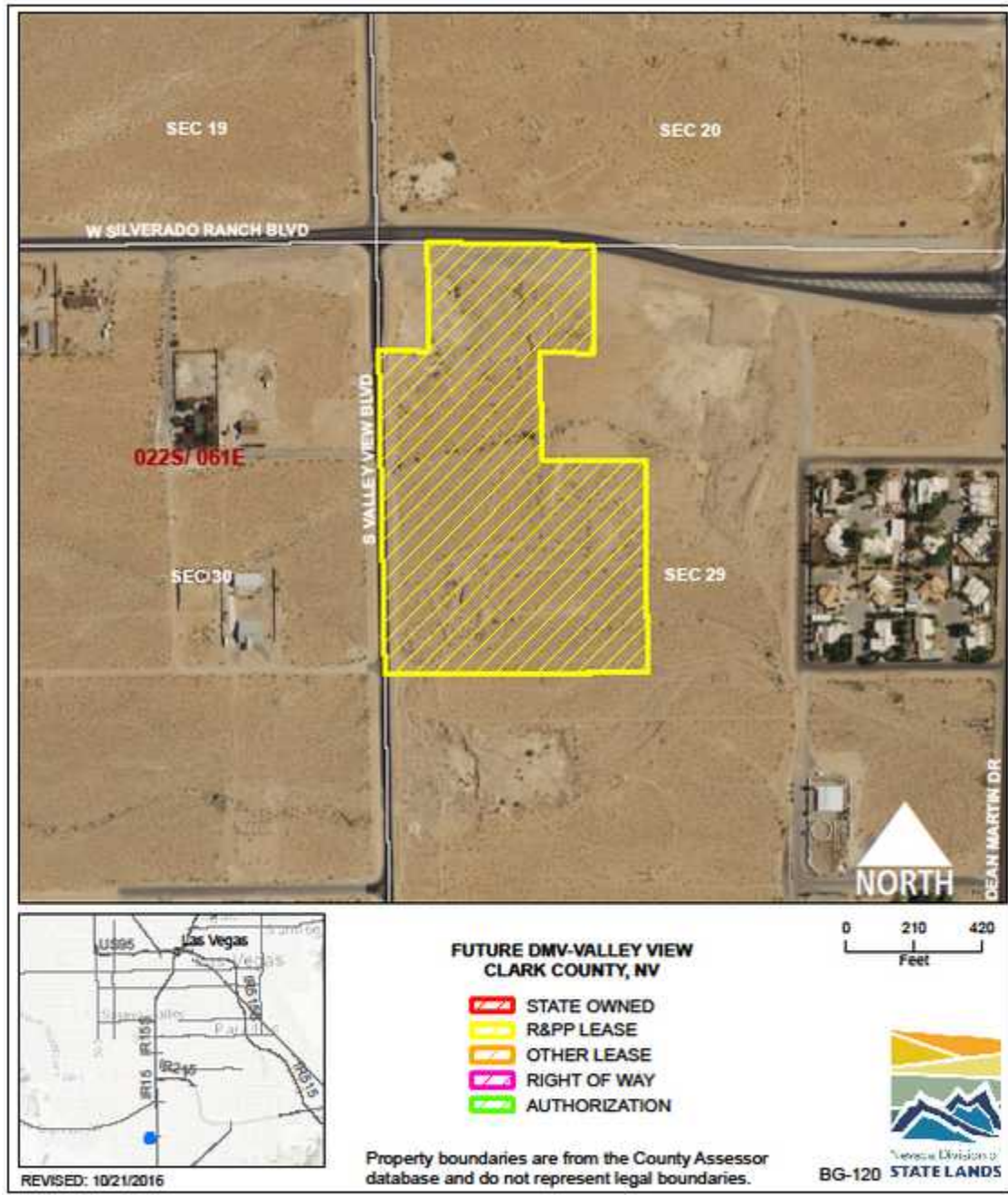
**MEETS AGENCY LAND NEEDS (Y/N/STRATEGIC):** S

**PERFORMING ASSET (Y/N/PARTIAL):** P

**ISSUES/RESTRICTIONS:** Part of Capital Complex Master Plan, Includes historic stone gym and multiple vacant buildings with building code issues.

**RECOMMENDATIONS:** Retain for agency operations.





**BUILDINGS AND GROUNDS:** FUTURE DMV BG-120  
**LOCATION:** Corner of Silverado and Valley View, Las Vegas  
**ACRES:** 20.03  
**USE/AGENCY:** Vacant/B&G  
**MEETS AGENCY LAND NEEDS (Y/N/STRATEGIC):** S  
**PERFORMING ASSET (Y/N/PARTIAL):** P  
**ISSUES/RESTRICTIONS:** R&PP lease.  
**RECOMMENDATIONS:** Retain for agency operations.