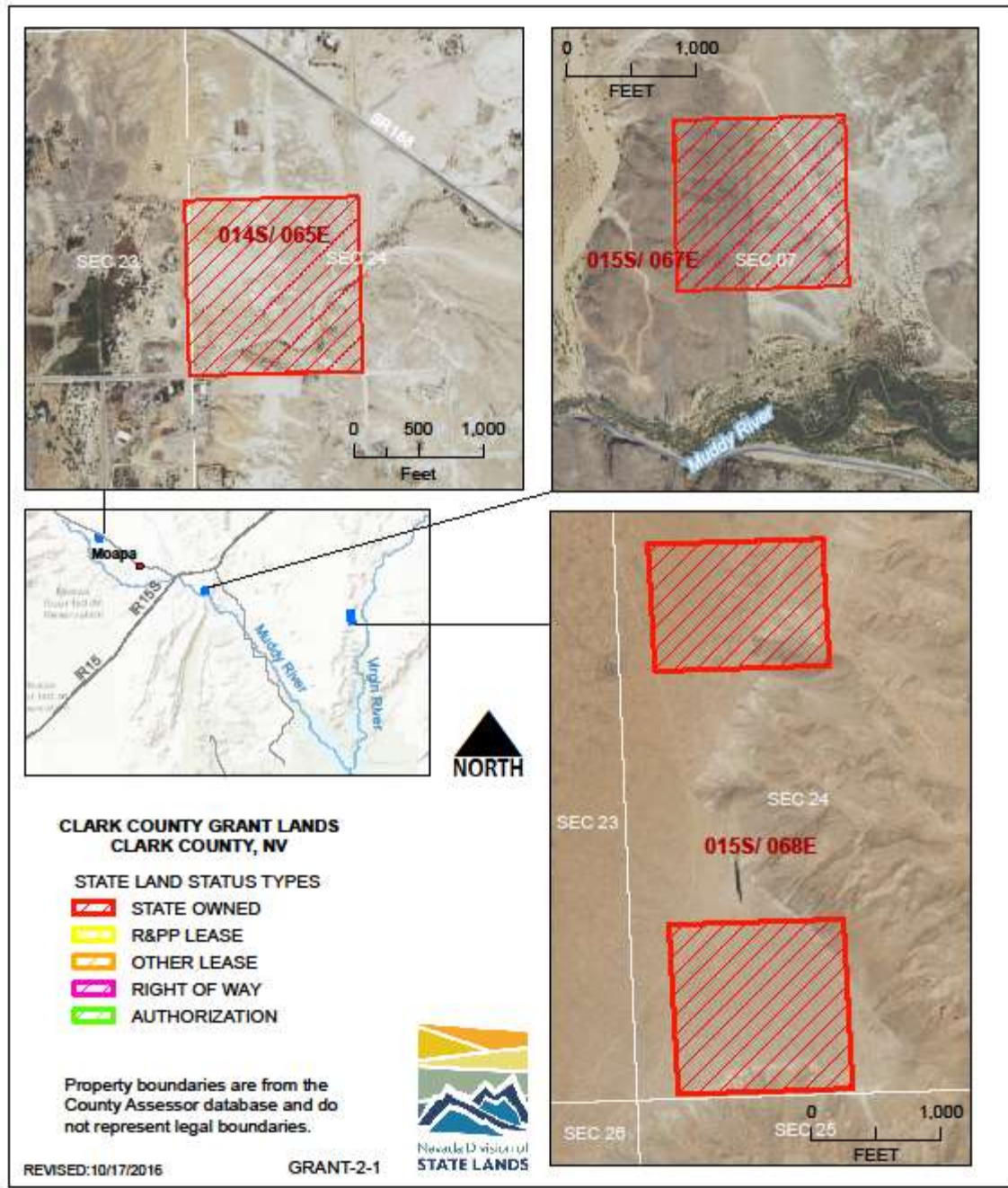


STATE LAND OFFICE

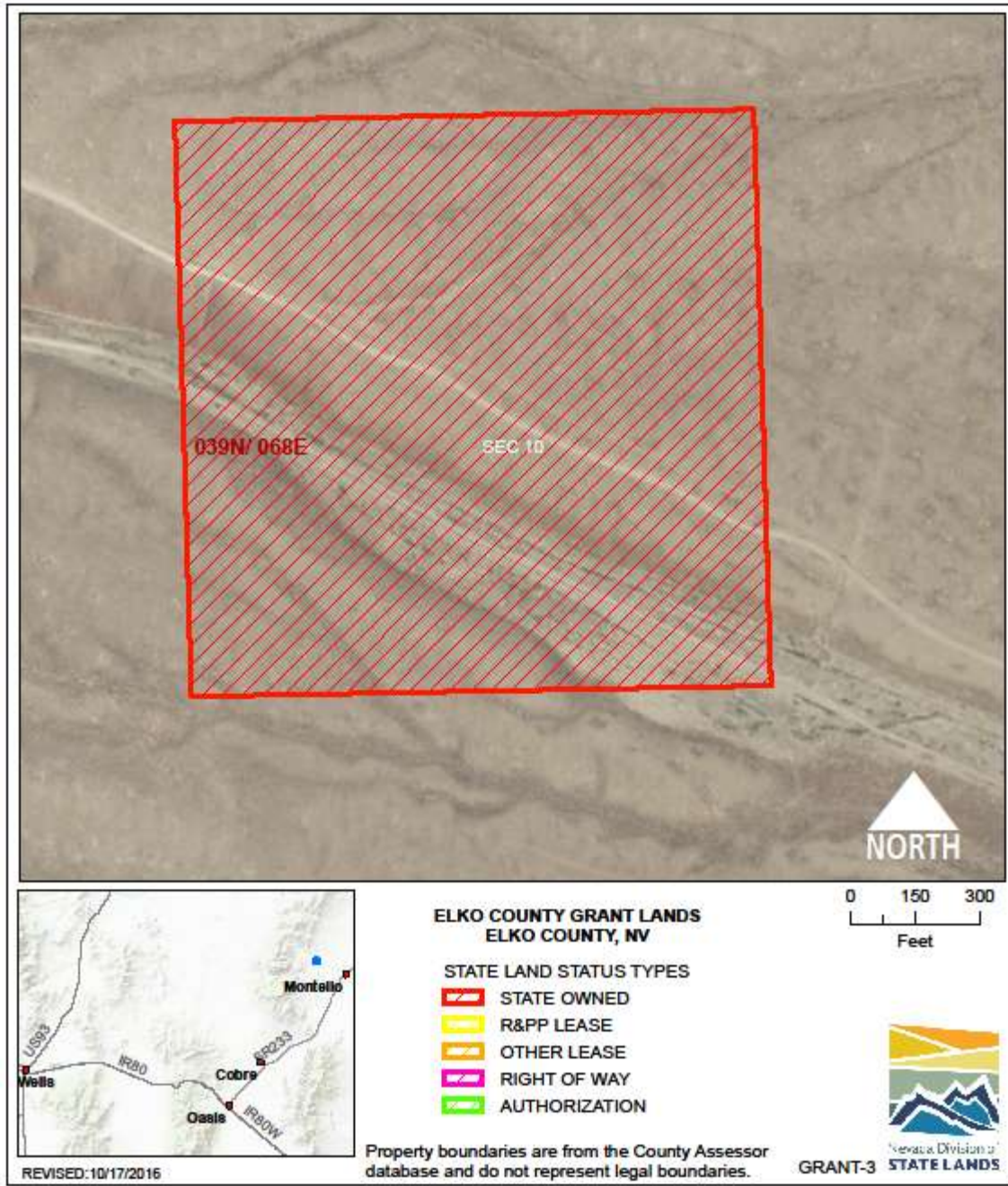
Carey Act
Grant Lands/School Trust Lands
R&PP Leases/Patents
Tahoe Bond Act
Tahoe Land Coverage/Land Bank
Unassigned State Land/Escheat



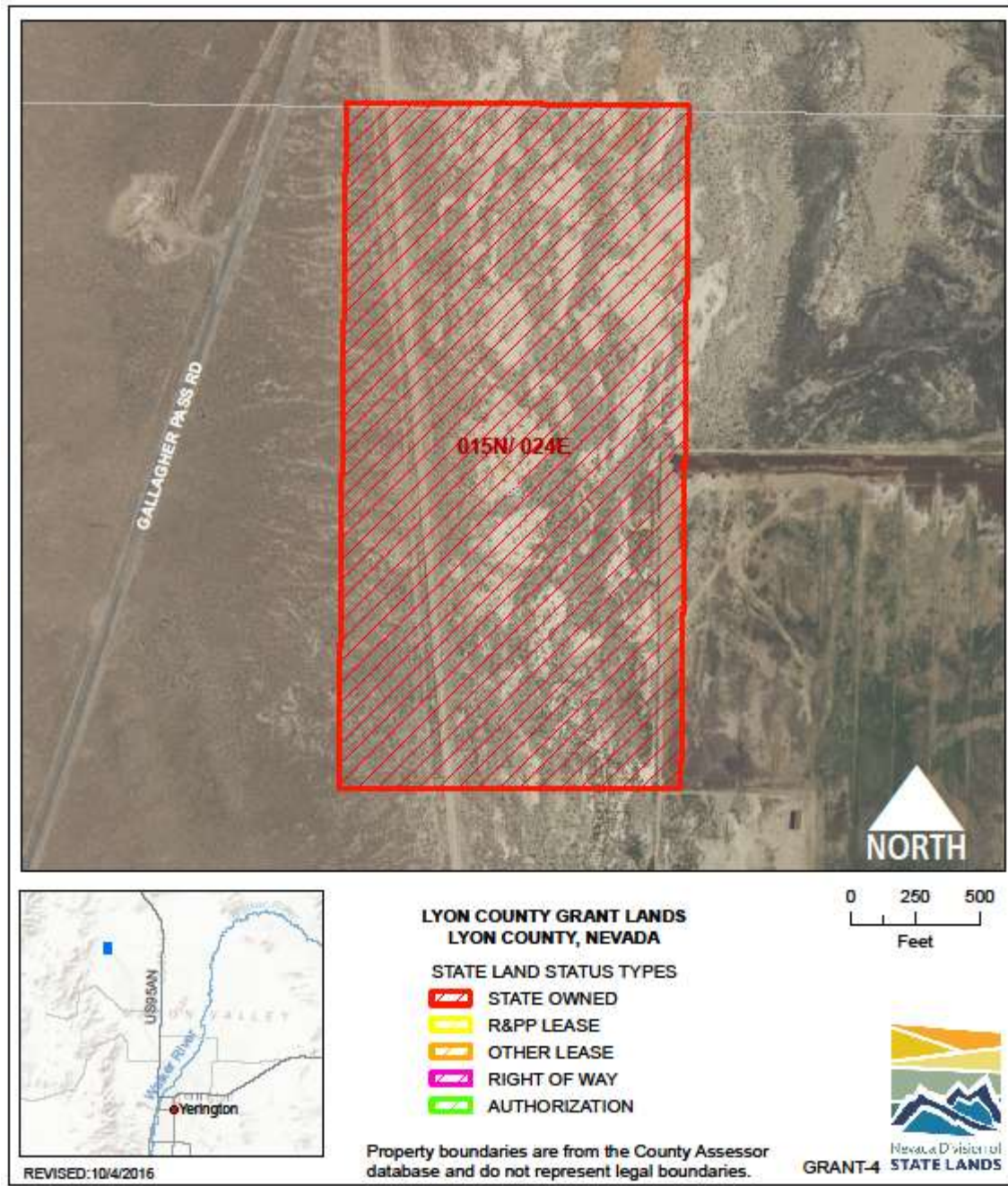
STATE LAND OFFICE: **VICE CANYON GRANT-1**
LOCATION: 3365 Timberline Road, Carson City
ACRES: 315.36
USE/AGENCY: Vacant - School Trust Lands/State Lands
MEETS AGENCY LAND NEEDS (Y/N/STRATEGIC): S
PERFORMING ASSET (Y/N/PARTIAL): P
ISSUES/RESTRICTIONS: School trust land restriction.
RECOMMENDATIONS: Potential disposal when market improves.



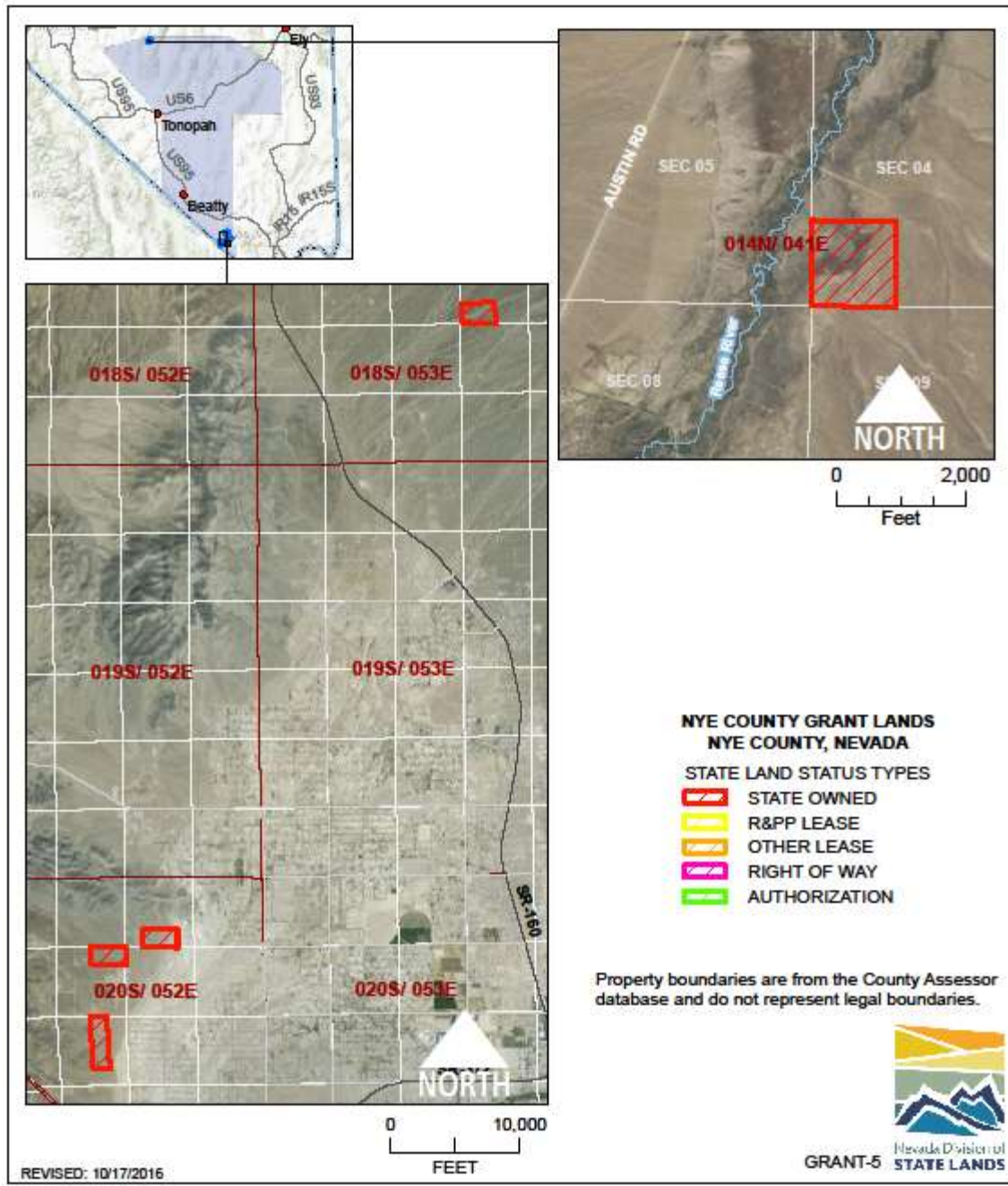
STATE LAND OFFICE: CLARK GRANT-2
LOCATION: Clark County
ACRES: 152.96
USE/AGENCY: Vacant - School Trust Lands/State Lands
MEETS AGENCY LAND NEEDS (Y/N/STRATEGIC): S
PERFORMING ASSET (Y/N/PARTIAL): P
ISSUES/RESTRICTIONS: School trust land restriction
RECOMMENDATIONS: Potential disposal when market improves.



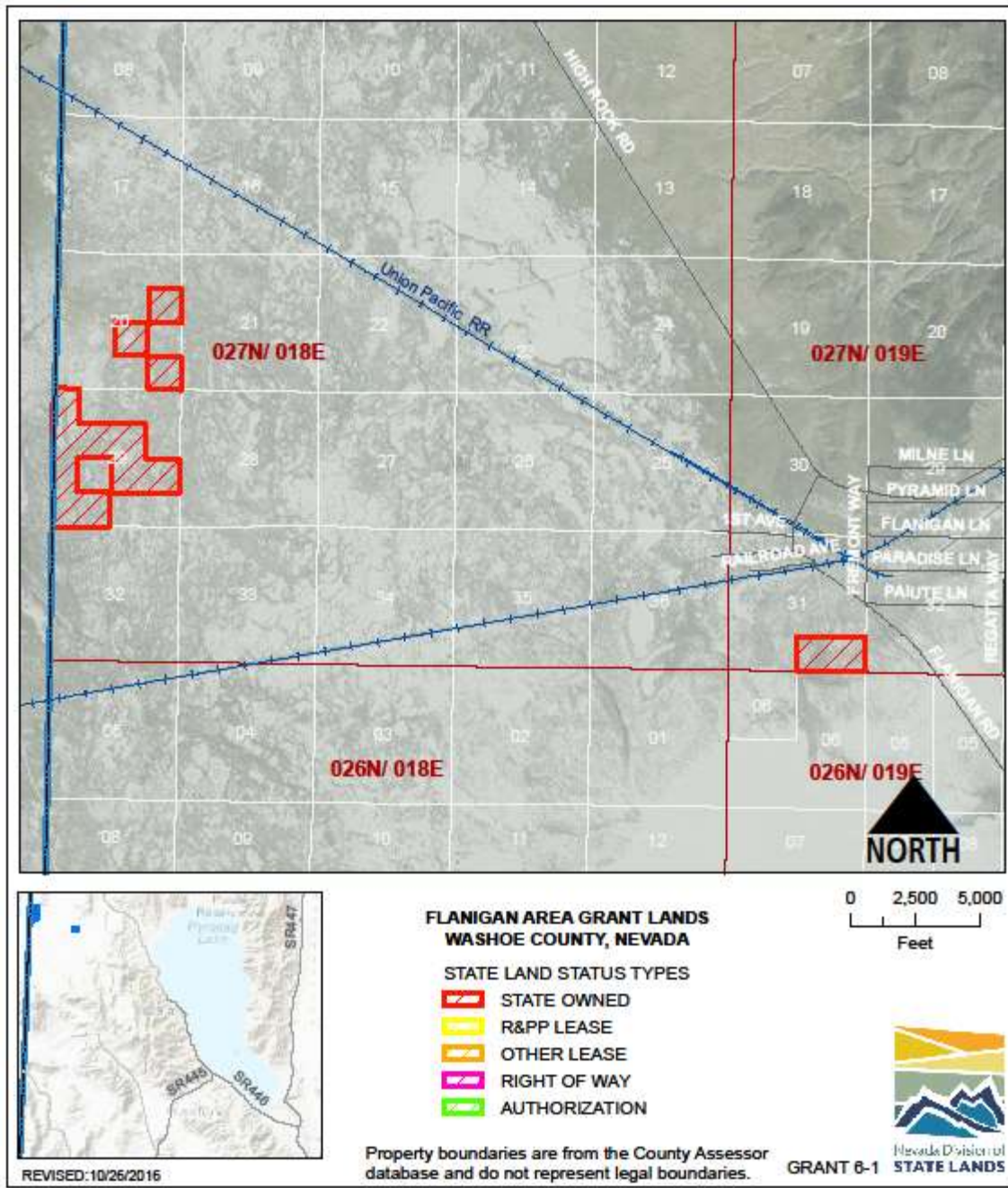
STATE LAND OFFICE: ELKO GRANT-3
LOCATION: Montello, Elko County
ACRES: 41.18
USE/AGENCY: Vacant - School Trust Lands/State Lands
MEETS AGENCY LAND NEEDS (Y/N/STRATEGIC): S
PERFORMING ASSET (Y/N/PARTIAL): P
ISSUES/RESTRICTIONS: School trust land restriction.
RECOMMENDATIONS: Potential disposal when market improves.



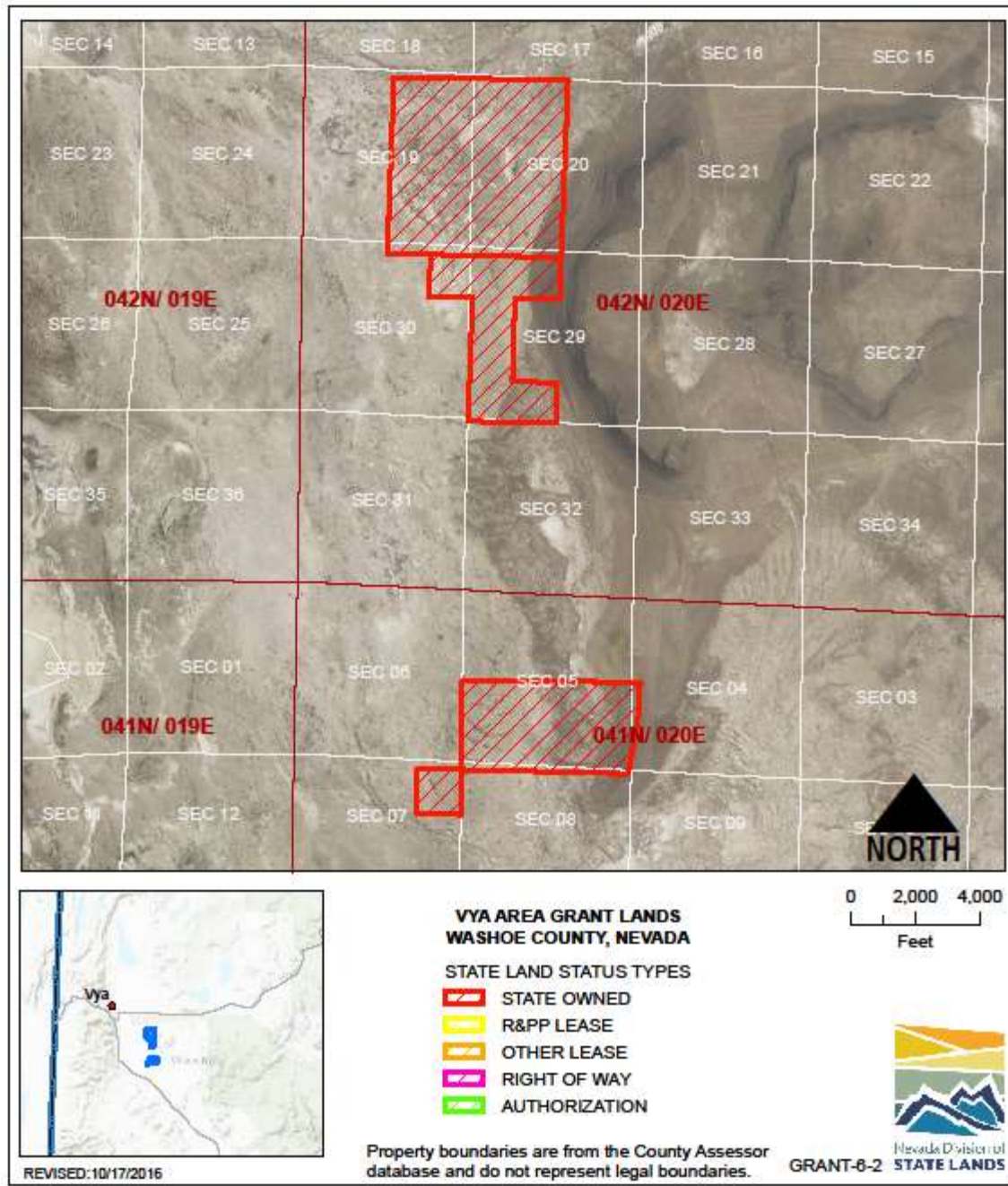
STATE LAND OFFICE: WABUSKA GRANT-4
LOCATION: Wabuska, Lyon County
ACRES: 80.74
USE/AGENCY: Vacant - School Trust Lands/State Lands
MEETS AGENCY LAND NEEDS (Y/N/STRATEGIC): S
PERFORMING ASSET (Y/N/PARTIAL): P
ISSUES/RESTRICTIONS: School trust land restriction.
RECOMMENDATIONS: Potential disposal when market improves.



STATE LAND OFFICE: NYE GRANT-5
LOCATION: Nye County
ACRES: 462.72
USE/AGENCY: Vacant - School Trust Lands/State Lands
MEETS AGENCY LAND NEEDS (Y/N/STRATEGIC): S
PERFORMING ASSET (Y/N/PARTIAL): P
ISSUES/RESTRICTIONS: School trust land restriction.
RECOMMENDATIONS: Potential disposal when market improves.



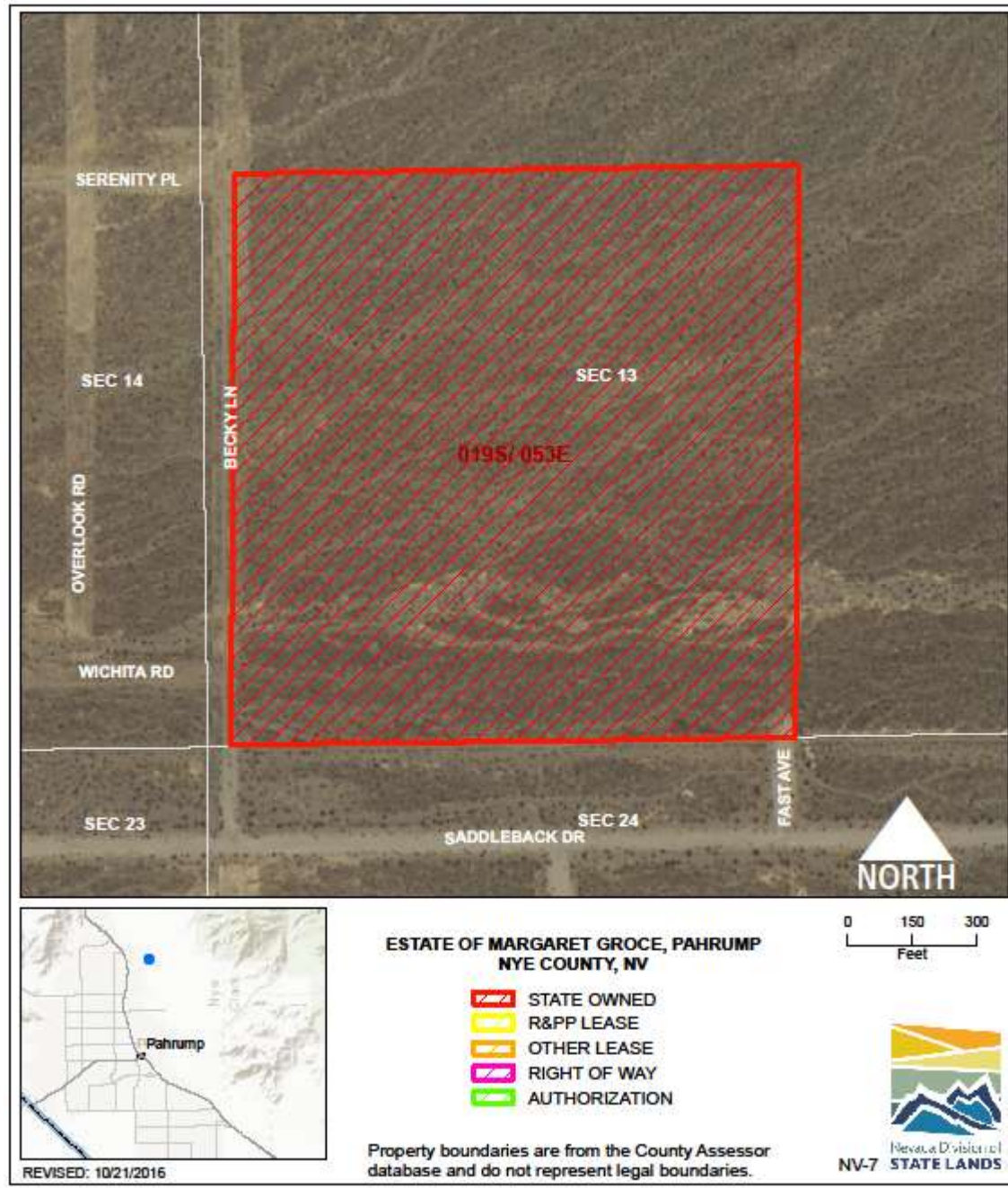
STATE LAND OFFICE: FLANIGAN GRANT 6-1
LOCATION: Flanigan, Washoe County
ACRES: 516.11
USE/AGENCY: Vacant - School Trust Lands/State Lands
MEETS AGENCY LAND NEEDS (Y/N/STRATEGIC): S
PERFORMING ASSET (Y/N/PARTIAL): P
ISSUES/RESTRICTIONS: School trust land restriction.
RECOMMENDATIONS: Potential disposal when market improves.



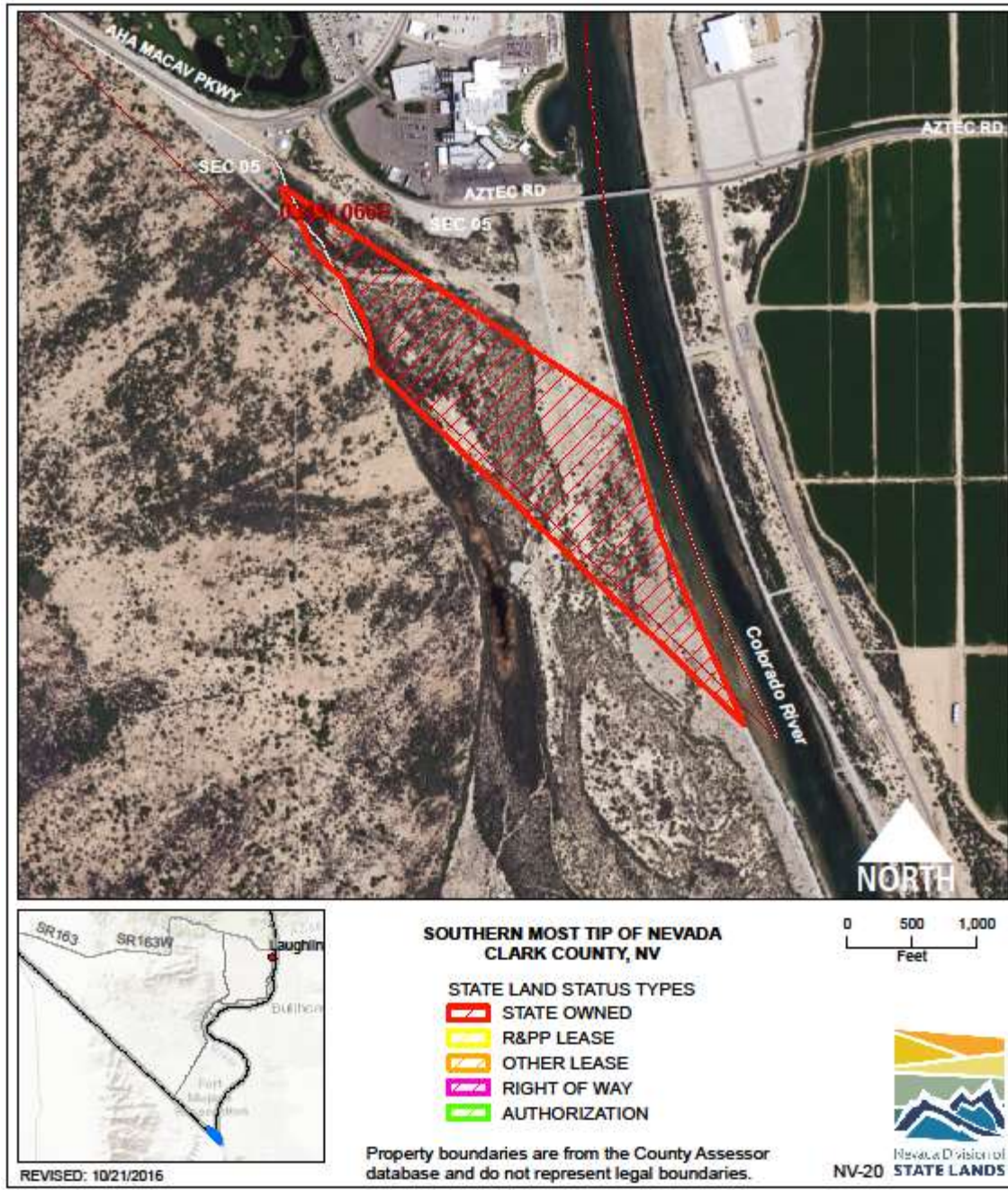
STATE LAND OFFICE: VYA GRANT 6-2
LOCATION: Vya, Washoe County
ACRES: 1,345.52
USE/AGENCY: Vacant - School Trust Lands/State Lands
MEETS AGENCY LAND NEEDS (Y/N/STRATEGIC): S
PERFORMING ASSET (Y/N/PARTIAL): P
ISSUES/RESTRICTIONS: School trust land restriction.
RECOMMENDATIONS: Potential disposal when market improves.



STATE LAND OFFICE: FLANNIGAN ESTATE NV-6
LOCATION: Midas, Elko County
ACRES: 0.06
USE/AGENCY: Vacant/State Lands
MEETS AGENCY LAND NEEDS (Y/N/STRATEGIC): S
PERFORMING ASSET (Y/N/PARTIAL): N
ISSUES/RESTRICTIONS: Escheat property.
RECOMMENDATIONS: Potential disposal.



STATE LAND OFFICE: GROCE ESTATE NV-7
LOCATION: 2130 East Harris Farm Road, Pahrump, Nye County
ACRES: 39.92
USE/AGENCY: Vacant/State Lands
MEETS AGENCY LAND NEEDS (Y/N/STRATEGIC): S
PERFORMING ASSET (Y/N/PARTIAL): N
ISSUES/RESTRICTIONS: Escheat property.
RECOMMENDATIONS: Potential disposal.



STATE LAND OFFICE: SOUTHERN TIP OF NEVADA NV-20
LOCATION: S of Laughlin, Clark County
ACRES: 74.38
USE/AGENCY: Vacant/State Lands
MEETS AGENCY LAND NEEDS (Y/N/STRATEGIC): Y
PERFORMING ASSET (Y/N/PARTIAL): Y
ISSUES/RESTRICTIONS:
RECOMMENDATIONS: Retain, State sovereign land.



STATE LAND OFFICE: GLADYS FARLEY ESTATE NV-21

LOCATION: Short Street, Wadsworth, Washoe County

ACRES: 0.35

USE/AGENCY: Vacant structures/State Lands

MEETS AGENCY LAND NEEDS (Y/N/STRATEGIC): S

PERFORMING ASSET (Y/N/PARTIAL): N

ISSUES/RESTRICTIONS: Escheat property.

RECOMMENDATIONS: Potential disposal.



STATE LAND OFFICE FORMER PIOCHE MAINTENANCE STATION NV-23

LOCATION: Pioche, Lincoln County

ACRES: 8.18

USE/AGENCY: Vacant/State Lands

MEETS AGENCY LAND NEEDS (Y/N/STRATEGIC): S

PERFORMING ASSET (Y/N/PARTIAL): N

ISSUES/RESTRICTIONS:

RECOMMENDATIONS: Dispose of when market conditions warrant.



STATE LAND OFFICE FORMER FIRE MARSHALL OFFICE NV-25

LOCATION: 2855 S Jones Blvd., Las Vegas, Clark County

ACRES: 0.70

USE/AGENCY: Office/State Lands

MEETS AGENCY LAND NEEDS (Y/N/STRATEGIC): S

PERFORMING ASSET (Y/N/PARTIAL): N

ISSUES/RESTRICTIONS: Site is vacant.

RECOMMENDATIONS: Dispose of when market conditions warrant.



STATE LAND OFFICE HUMBOLDT NDOT WITHDRAWAL NV-26

LOCATION: Humboldt County

ACRES: 39.21

USE/AGENCY: Office/State Lands

MEETS AGENCY LAND NEEDS (Y/N/STRATEGIC): Y

PERFORMING ASSET (Y/N/PARTIAL): Y

ISSUES/RESTRICTIONS: NDOT restriction.

RECOMMENDATIONS: Retain for agency needs.



STATE LAND OFFICE TRUCKEE RIVER ISLAND AT LAWTON NV-27

LOCATION: Washoe County

ACRES: 1.86

USE/AGENCY: Office/State Lands

MEETS AGENCY LAND NEEDS (Y/N/STRATEGIC): Y

PERFORMING ASSET (Y/N/PARTIAL): Y

ISSUES/RESTRICTIONS:

RECOMMENDATIONS: Retain for agency needs.