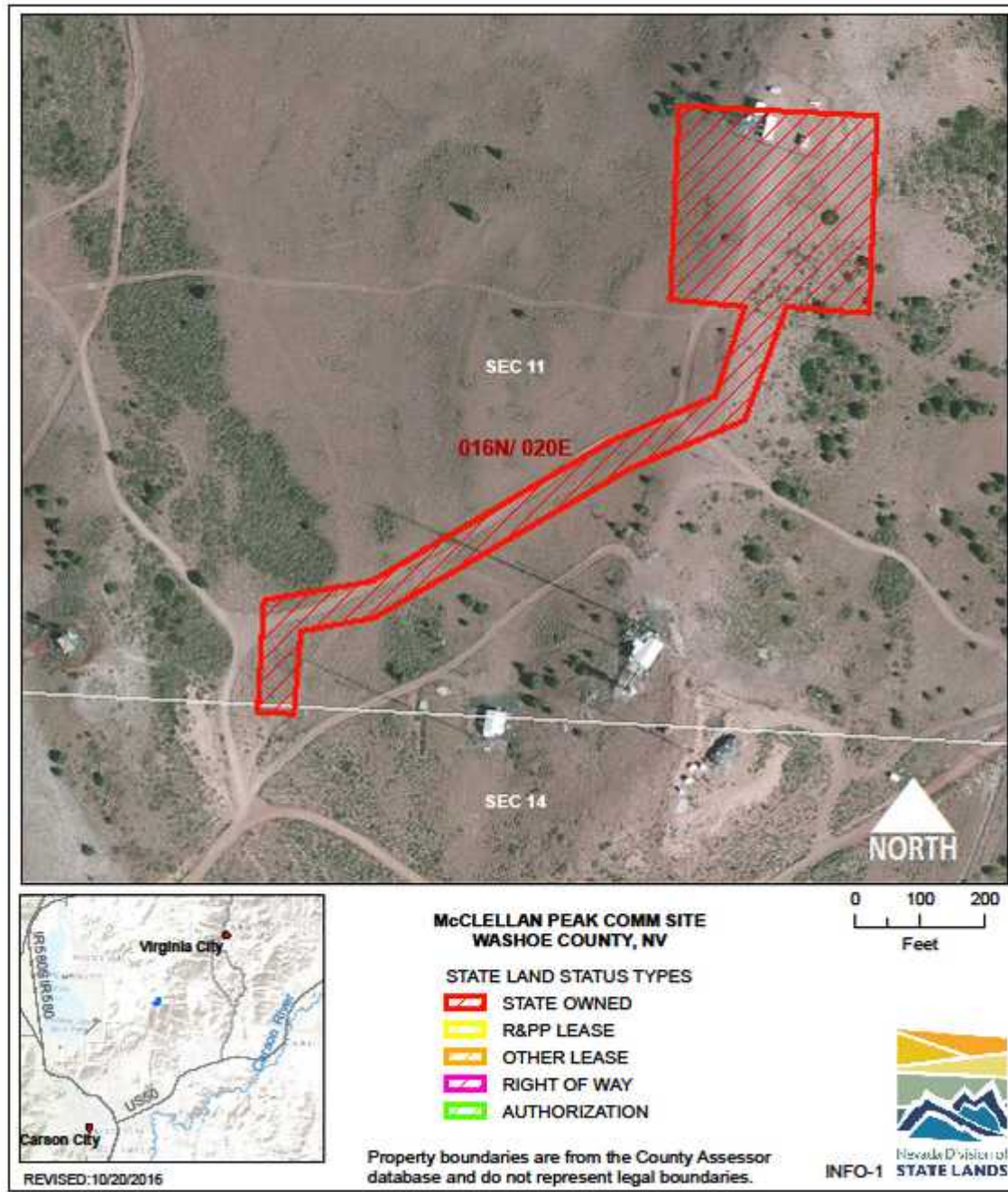


INFORMATION TECHNOLOGY



INFORMATION TECHNOLOGY: MCCLELLAN PEAK COMMUNICATION SITE INFO-1

LOCATION: Virginia Range, NE of Carson City

ACRES: 3.47

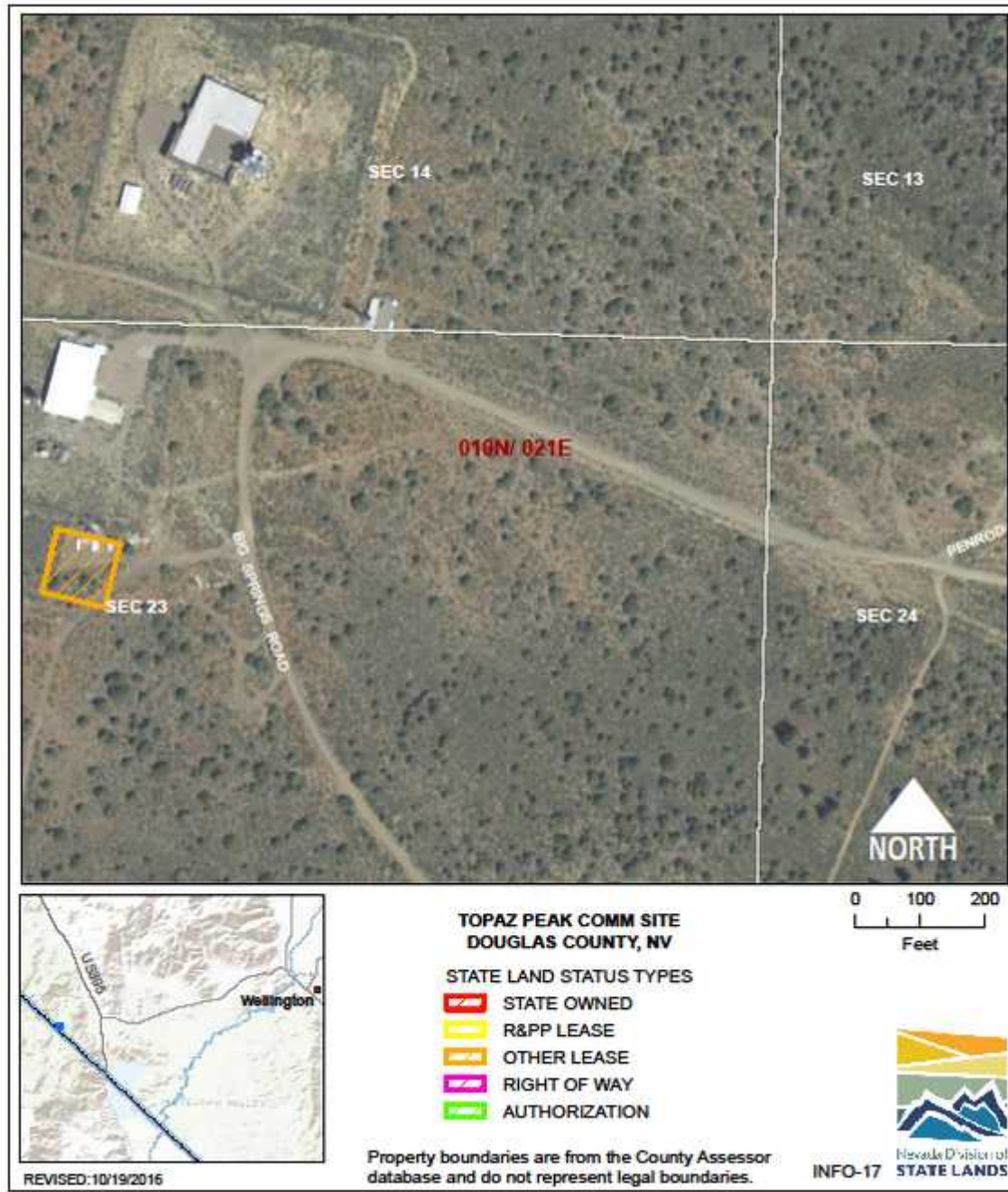
USE/AGENCY: Communications infrastructure/EITS

MEETS AGENCY LAND NEEDS (Y/N/STRATEGIC): Y

PERFORMING ASSET (Y/N/PARTIAL): Y

ISSUES/RESTRICTIONS:

RECOMMENDATIONS: Retain for agency operations.



INFORMATION TECHNOLOGY: PINENUT/RAWE COMMUNICATION SITE INFO-2

LOCATION: Pinenut Range, E of Carson City, Lyon County

ACRES: 0.33

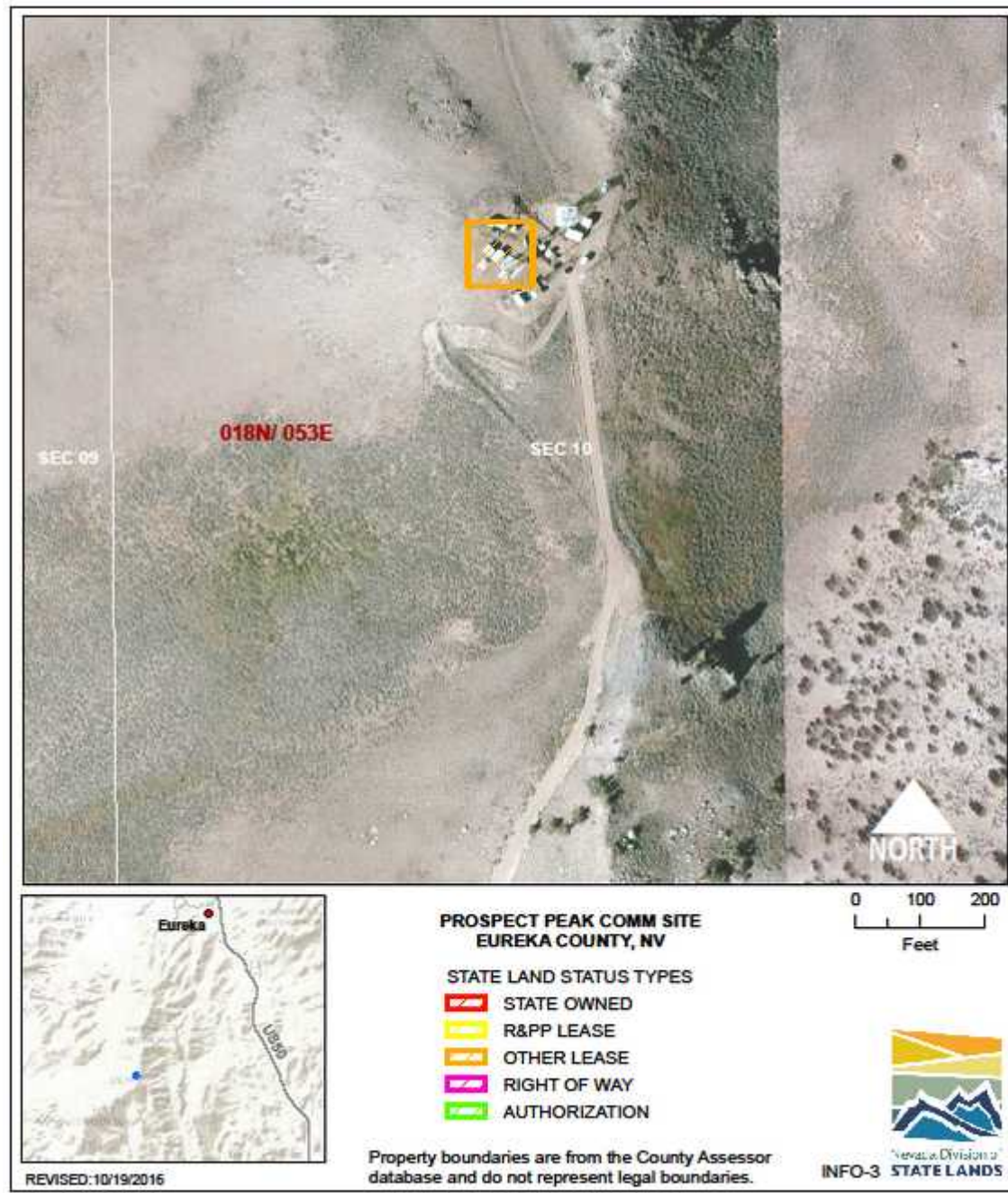
USE/AGENCY: Communications infrastructure/EITS

MEETS AGENCY LAND NEEDS (Y/N/STRATEGIC): Y

PERFORMING ASSET (Y/N/PARTIAL): Y

ISSUES/RESTRICTIONS: Lease expires 8/17/2022.

RECOMMENDATIONS: Retain for agency operations.



INFORMATION TECHNOLOGY: PROSPECT PEAK COMMUNICATION SITE INFO-3

LOCATION: SW of Eureka, Eureka County

ACRES: 0.23

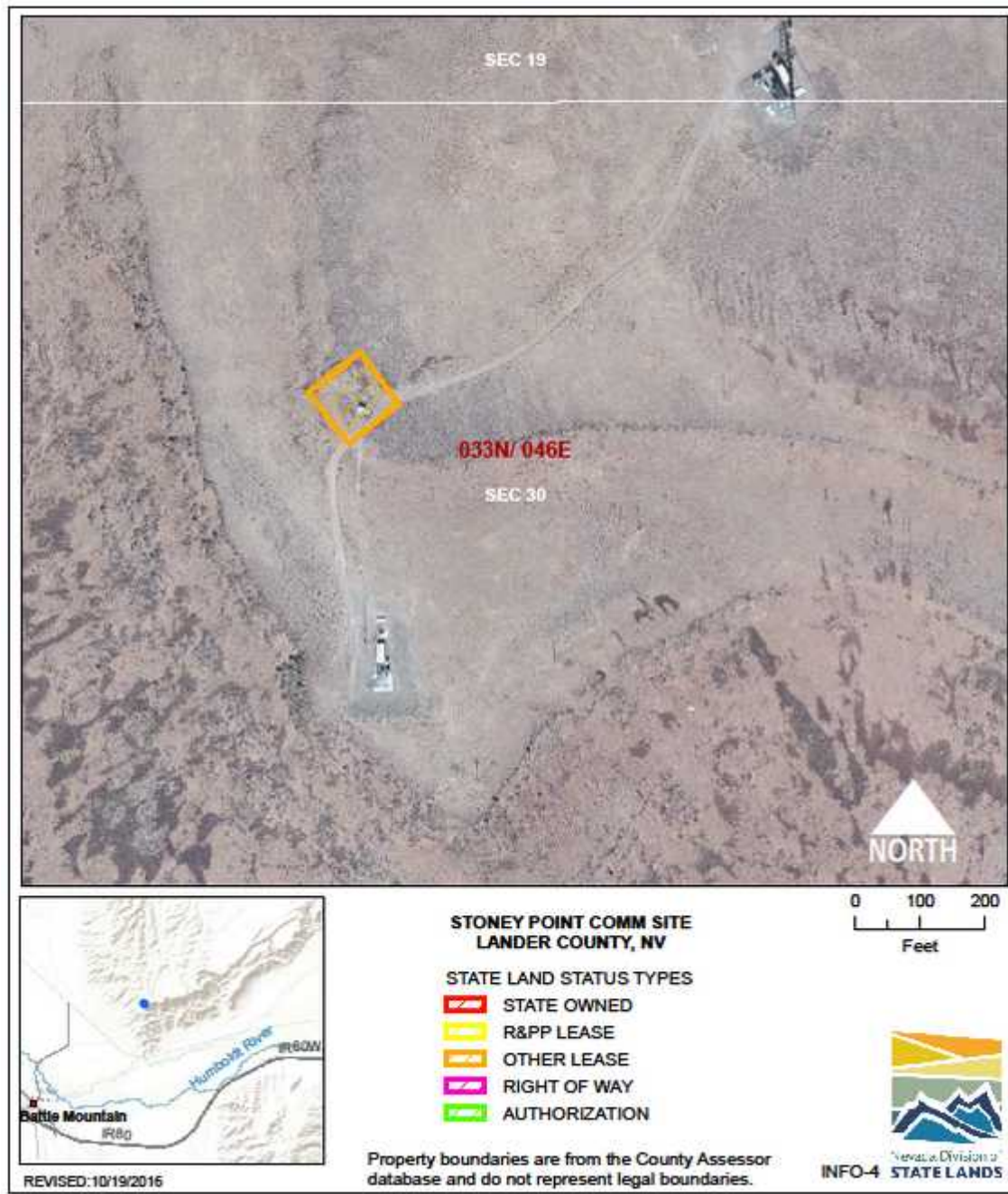
USE/AGENCY: Communications infrastructure/EITS

MEETS AGENCY LAND NEEDS (Y/N/STRATEGIC): Y

PERFORMING ASSET (Y/N/PARTIAL): Y

ISSUES/RESTRICTIONS: Lease expires 12/31/2027.

RECOMMENDATIONS: Retain for agency operations.



INFORMATION TECHNOLOGY: STONEY POINT COMMUNICATION SITE INFO-4

LOCATION: NE of Battle Mountain, Lander County

ACRES: 0.23

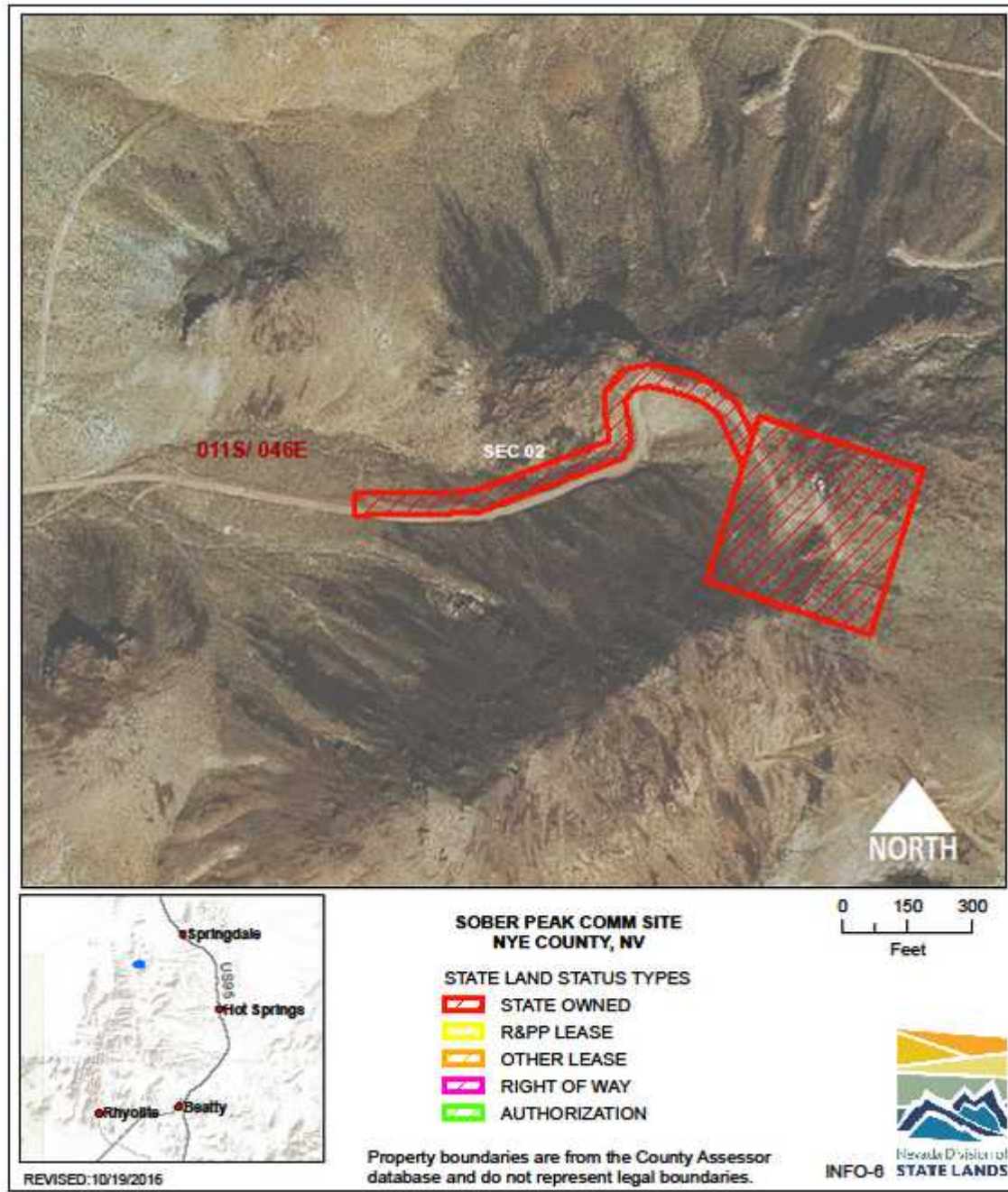
USE/AGENCY: Communications infrastructure/EITS

MEETS AGENCY LAND NEEDS (Y/N/STRATEGIC): Y

PERFORMING ASSET (Y/N/PARTIAL): Y

ISSUES/RESTRICTIONS: Lease expires 12/31/2040.

RECOMMENDATIONS: Retain for agency operations.



INFORMATION TECHNOLOGY: SOBER PEAK COMMUNICATION SITE INFO-6

LOCATION: N of Beatty, Nye County

ACRES: 5.00

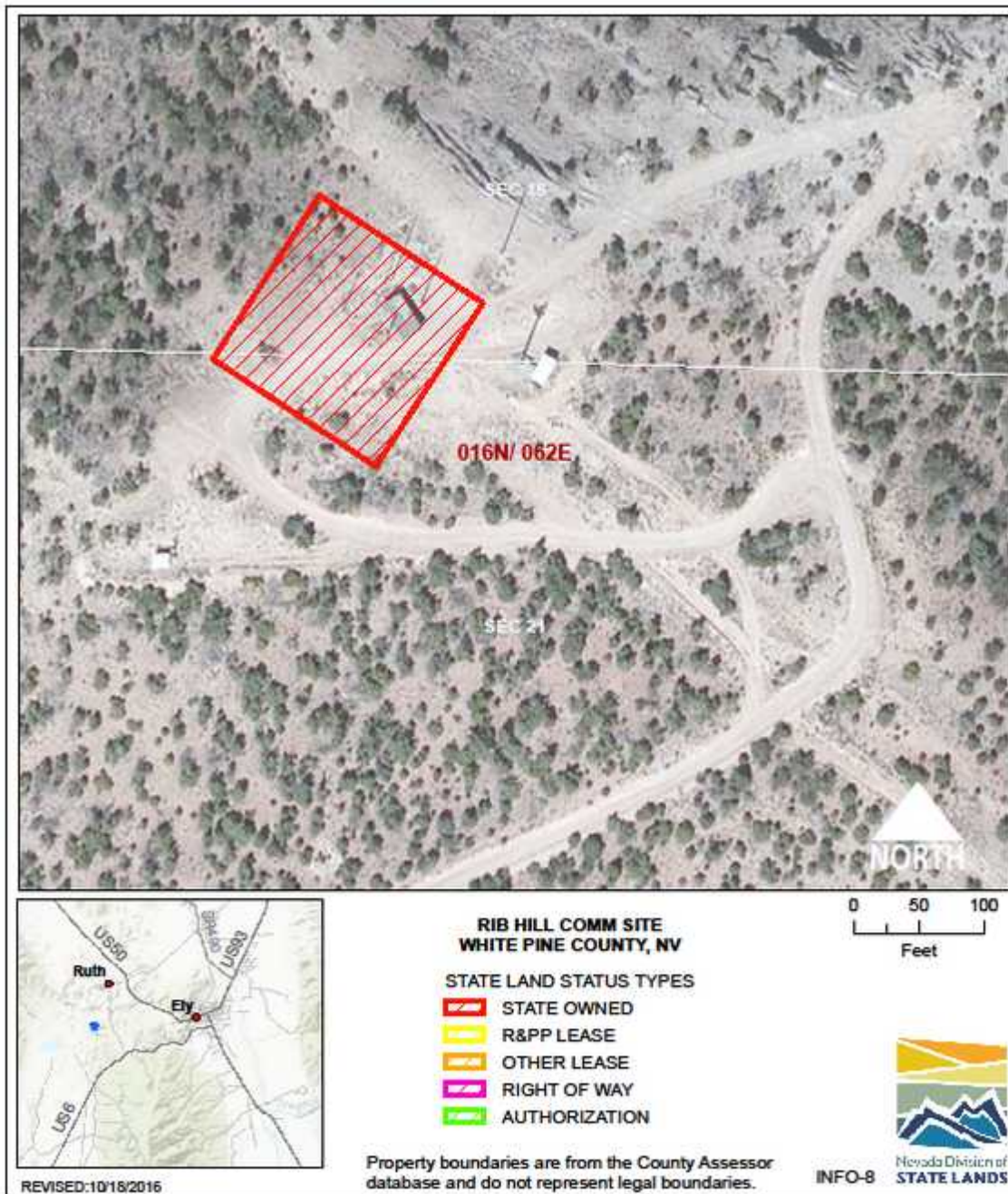
USE/AGENCY: Communications infrastructure/EITS

MEETS AGENCY LAND NEEDS (Y/N/STRATEGIC): Y

PERFORMING ASSET (Y/N/PARTIAL): Y

ISSUES/RESTRICTIONS:

RECOMMENDATIONS: Retain for agency operations.



INFORMATION TECHNOLOGY: RIB HILL COMMUNICATION SITE INFO-8

LOCATION: W of Ely, White Pine County

ACRES: 0.52

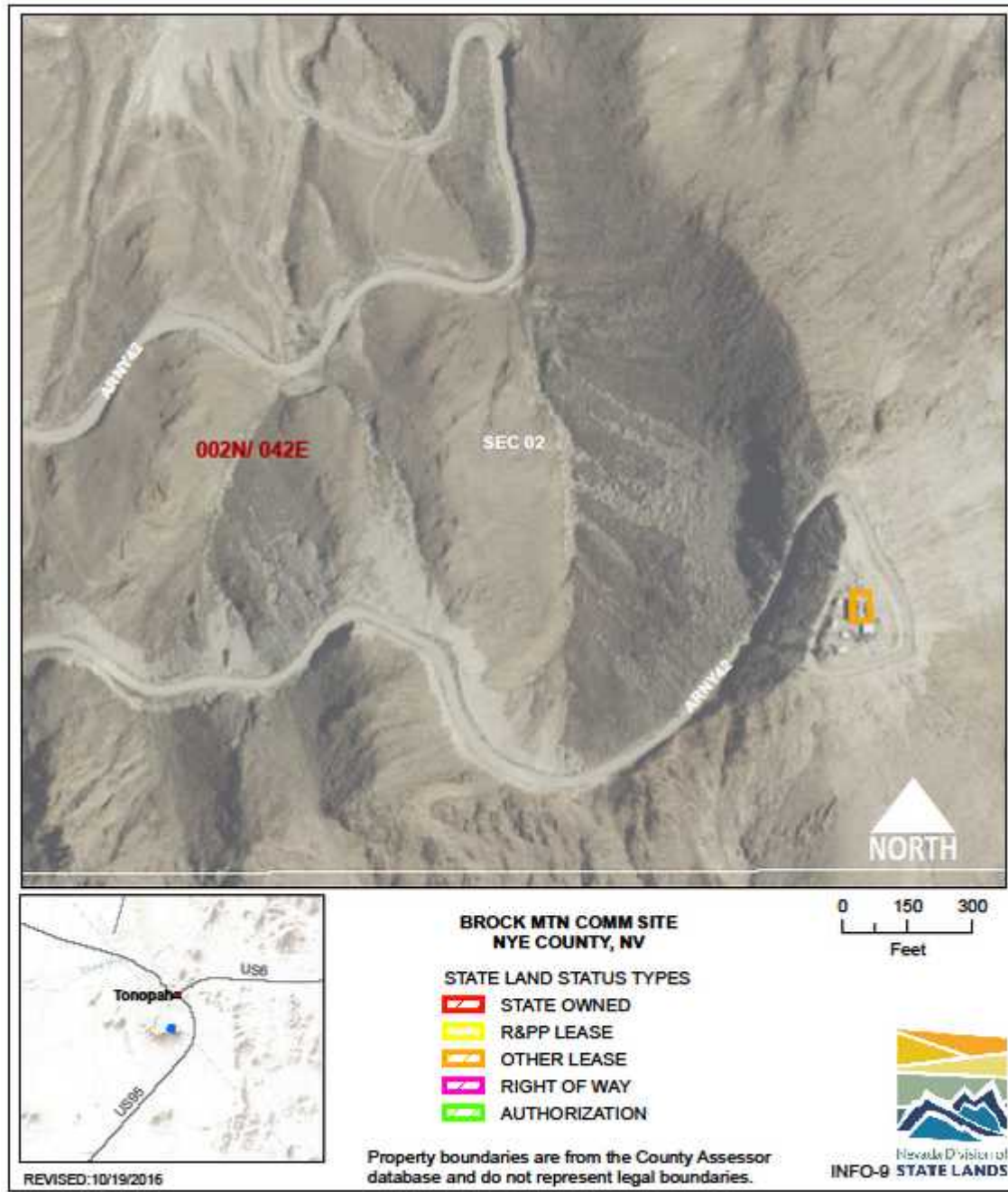
USE/AGENCY: Communications infrastructure/EITS

MEETS AGENCY LAND NEEDS (Y/N/STRATEGIC): N

PERFORMING ASSET (Y/N/PARTIAL): N

ISSUES/RESTRICTIONS: State-owned.

RECOMMENDATIONS: No EITS presence, transfer to local government.



INFORMATION TECHNOLOGY: BROCK MOUNTAIN COMMUNICATION SITE INFO-9

LOCATION: S of Tonopah, Nye County

ACRES: 0.06

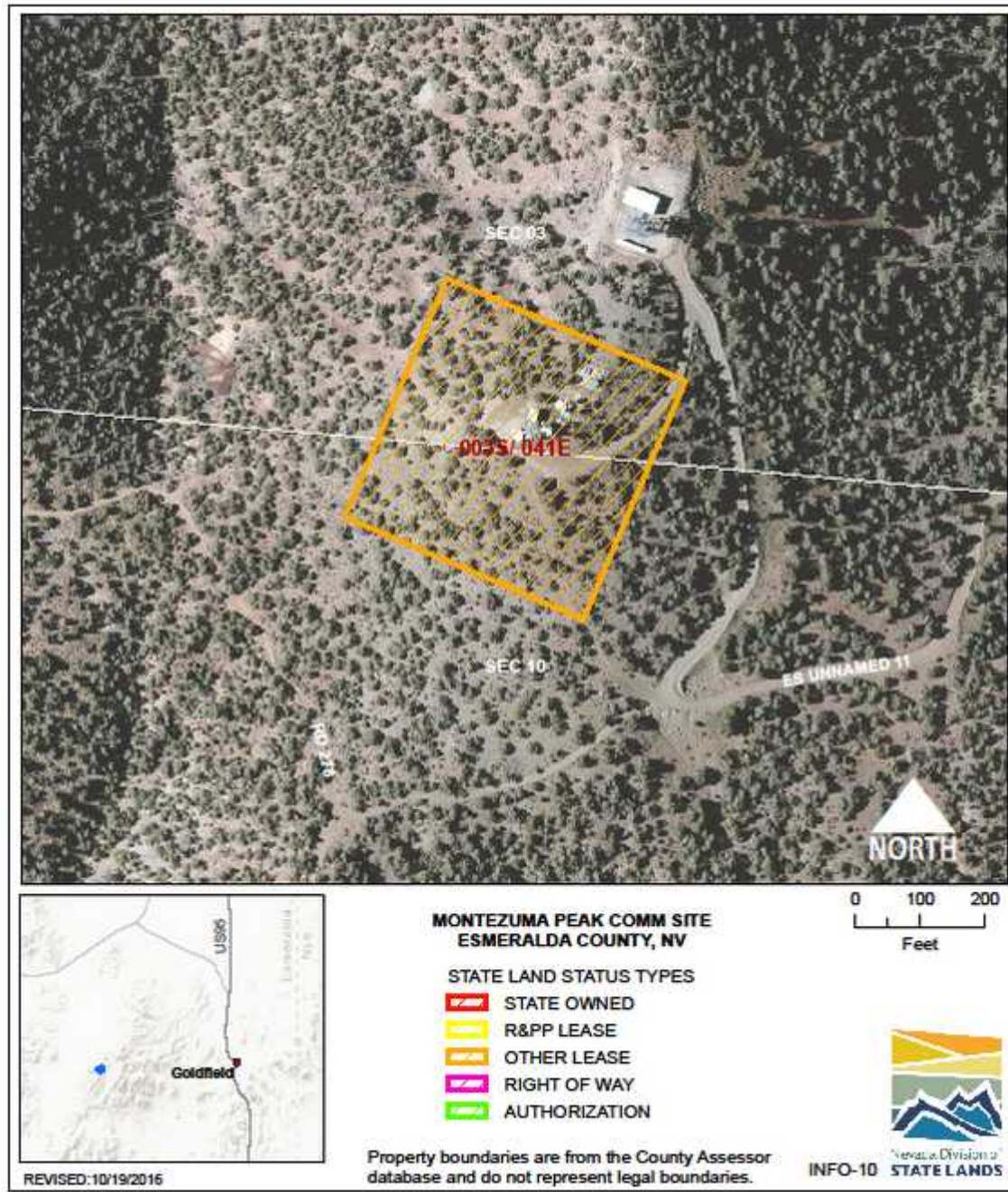
USE/AGENCY: Communications infrastructure/EITS

MEETS AGENCY LAND NEEDS (Y/N/STRATEGIC): Y

PERFORMING ASSET (Y/N/PARTIAL): Y

ISSUES/RESTRICTIONS: Lease expires 12/31/2039.

RECOMMENDATIONS: Retain for agency operations.



INFORMATION TECHNOLOGY: MONTEZUMA PEAK MICROWAVE SITE INFO-10

LOCATION: W of Goldfield

ACRES: 3.67

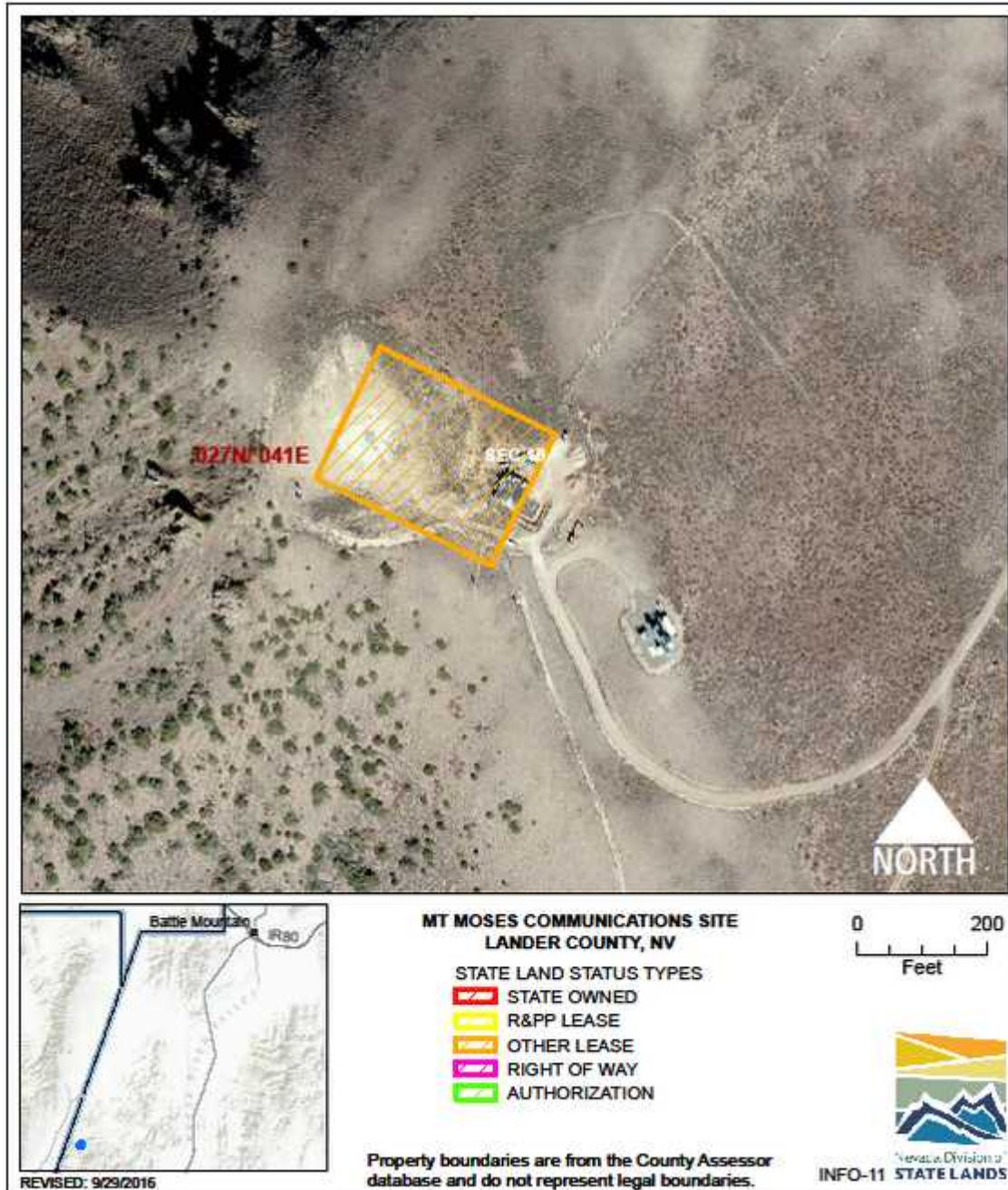
USE/AGENCY: Communications infrastructure/EITS

MEETS AGENCY LAND NEEDS (Y/N/STRATEGIC): Y

PERFORMING ASSET (Y/N/PARTIAL): Y

ISSUES/RESTRICTIONS: Lease expires 10/24/2016.

RECOMMENDATIONS: Retain for agency operations.



INFORMATION TECHNOLOGY: MT MOSES COMMUNICATION SITE INFO-11

LOCATION: N of Austin, Lander County

ACRES: 1.55

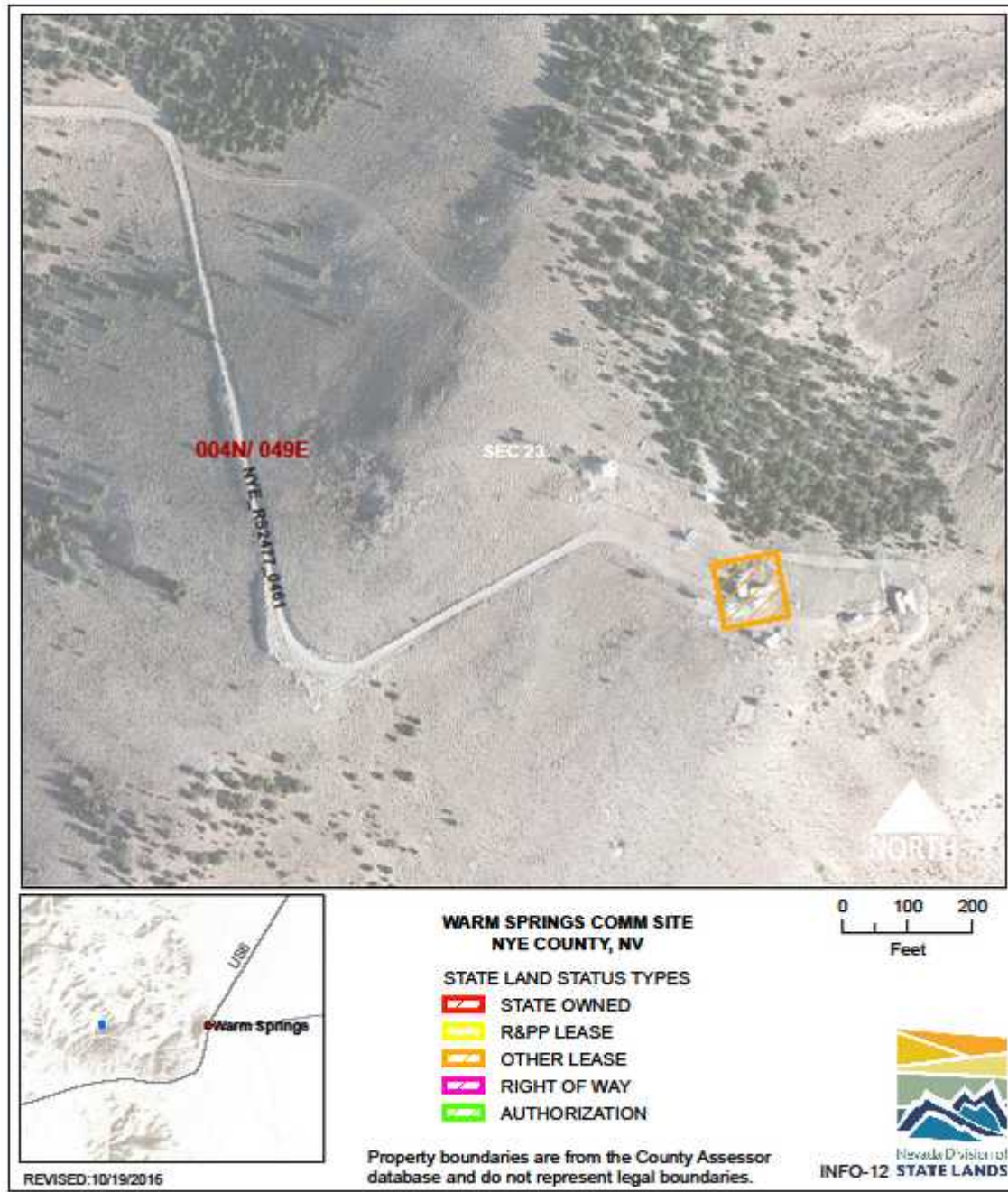
USE/AGENCY: Communications infrastructure/EITS

MEETS AGENCY LAND NEEDS (Y/N/STRATEGIC): N

PERFORMING ASSET (Y/N/PARTIAL): N

ISSUES/RESTRICTIONS: Lease expires 4/25/2021.

RECOMMENDATIONS: Demo buildings and dispose of site.



INFORMATION TECHNOLOGY: WARM SPRINGS COMMUNICATION SITE INFO-12

LOCATION: Warm Springs, Nye County

ACRES: 0.23

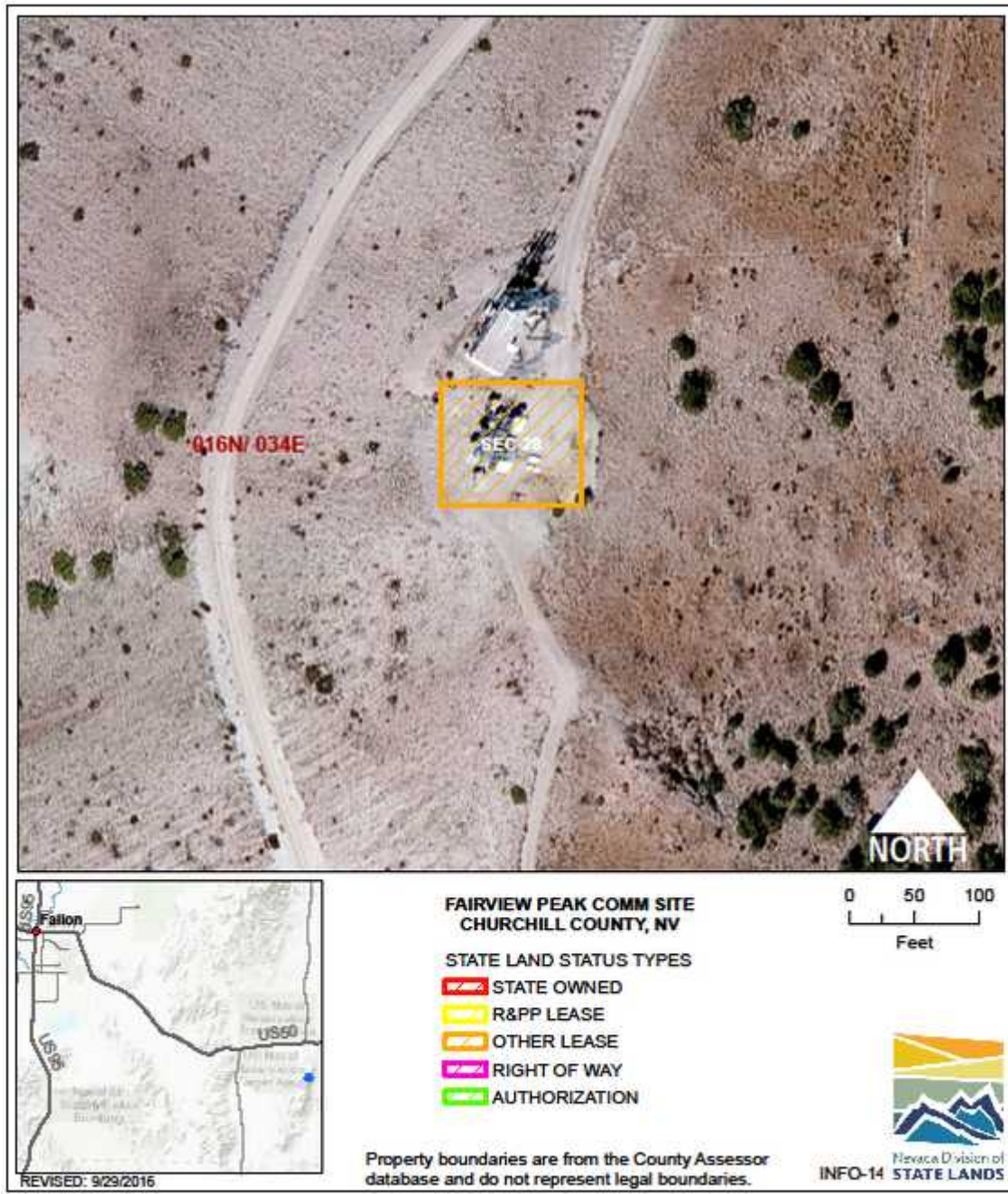
USE/AGENCY: Communications infrastructure/EITS

MEETS AGENCY LAND NEEDS (Y/N/STRATEGIC): Y

PERFORMING ASSET (Y/N/PARTIAL): Y

ISSUES/RESTRICTIONS: Lease expires 12/31/2039.

RECOMMENDATIONS: Retain for agency operations.



INFORMATION TECHNOLOGY: FAIRVIEW PEAK COMMUNICATION SITE INFO-14

LOCATION: E of Fallon, Churchill County

ACRES: 0.24

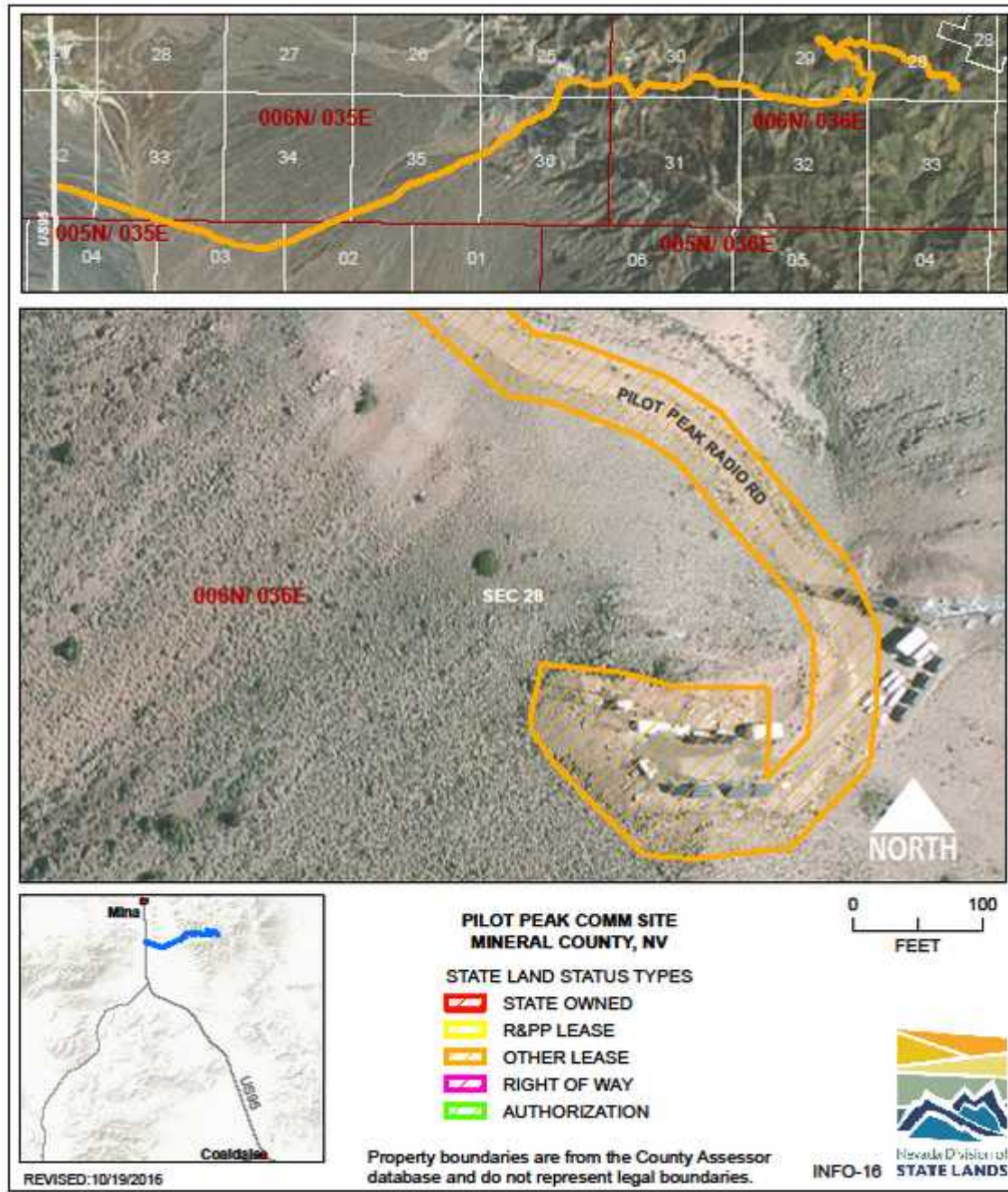
USE/AGENCY: Communications infrastructure/EITS

MEETS AGENCY LAND NEEDS (Y/N/STRATEGIC): Y

PERFORMING ASSET (Y/N/PARTIAL): Y

ISSUES/RESTRICTIONS: Lease expires 12/31/2030.

RECOMMENDATIONS: Retain for agency operations.



INFORMATION TECHNOLOGY: PILOT PEAK COMMUNICATION SITE INFO-16

LOCATION: E of Mina, Mineral County

ACRES: 57.04

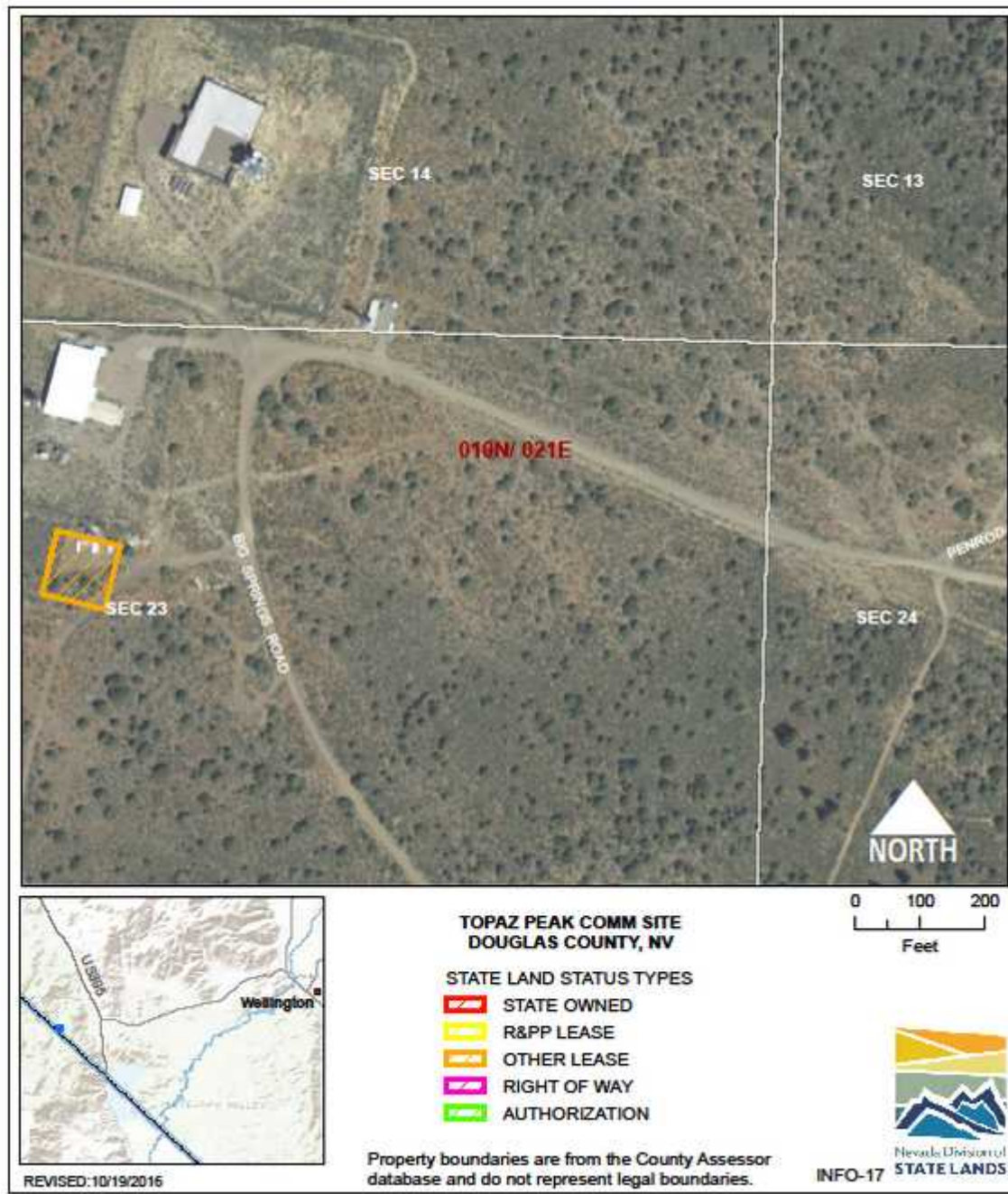
USE/AGENCY: Communications infrastructure/EITS

MEETS AGENCY LAND NEEDS (Y/N/STRATEGIC): Y

PERFORMING ASSET (Y/N/PARTIAL): Y

ISSUES/RESTRICTIONS: Lease expires 12/31/2029.

RECOMMENDATIONS: Retain for agency operations.



INFORMATION TECHNOLOGY: TOPAZ PEAK COMMUNICATION SITE INFO-17

LOCATION: Topaz, Douglas County

ACRES: 0.23

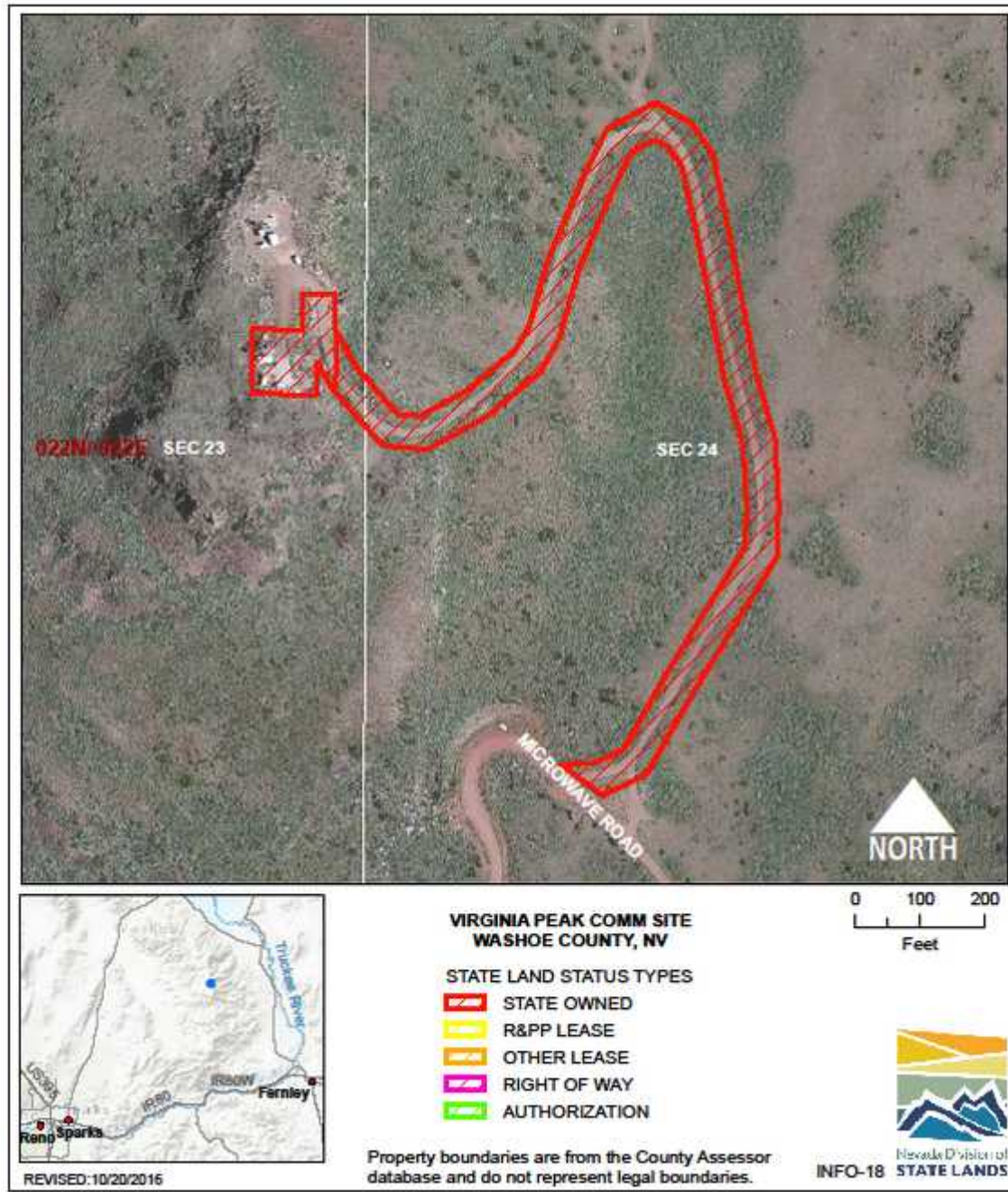
USE/AGENCY: Communications infrastructure/EITS

MEETS AGENCY LAND NEEDS (Y/N/STRATEGIC): S

PERFORMING ASSET (Y/N/PARTIAL): N

ISSUES/RESTRICTIONS: Lease expires 12/31/2039.

RECOMMENDATIONS: No user there, hold for future potential.



INFORMATION TECHNOLOGY: VIRGINIA PEAK COMMUNICATION SITE INFO-18

LOCATION: NE of Sparks, Washoe County

ACRES: 2.62

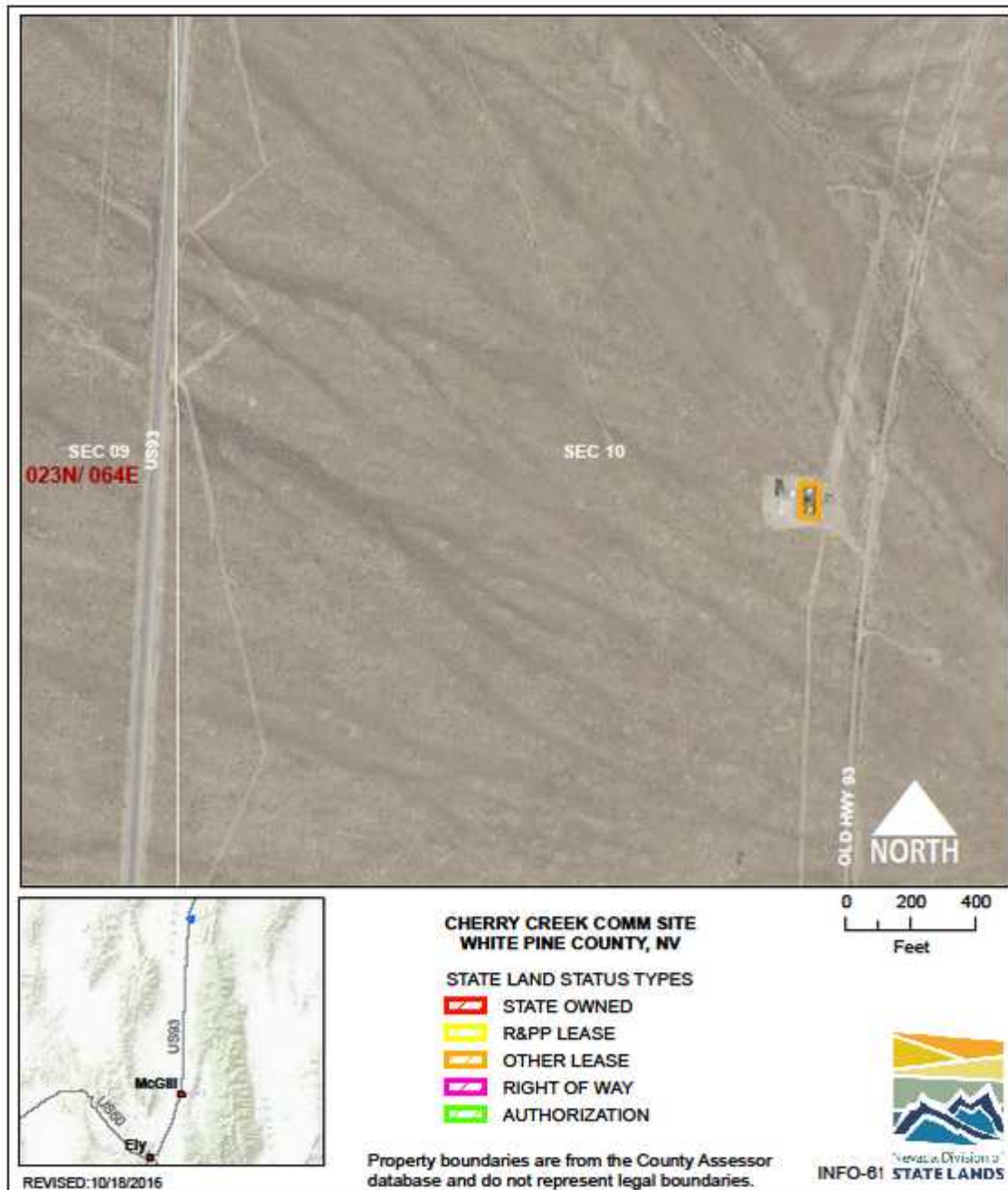
USE/AGENCY: Communications infrastructure/EITS

MEETS AGENCY LAND NEEDS (Y/N/STRATEGIC): Y

PERFORMING ASSET (Y/N/PARTIAL): Y

ISSUES/RESTRICTIONS: Lease expires 4/16/2026.

RECOMMENDATIONS: Retain for agency operations.



INFORMATION TECHNOLOGY: BALD PEAK COMMUNICATION SITE INFO-19

LOCATION: E of Currie, Elko County

ACRES: 0.23

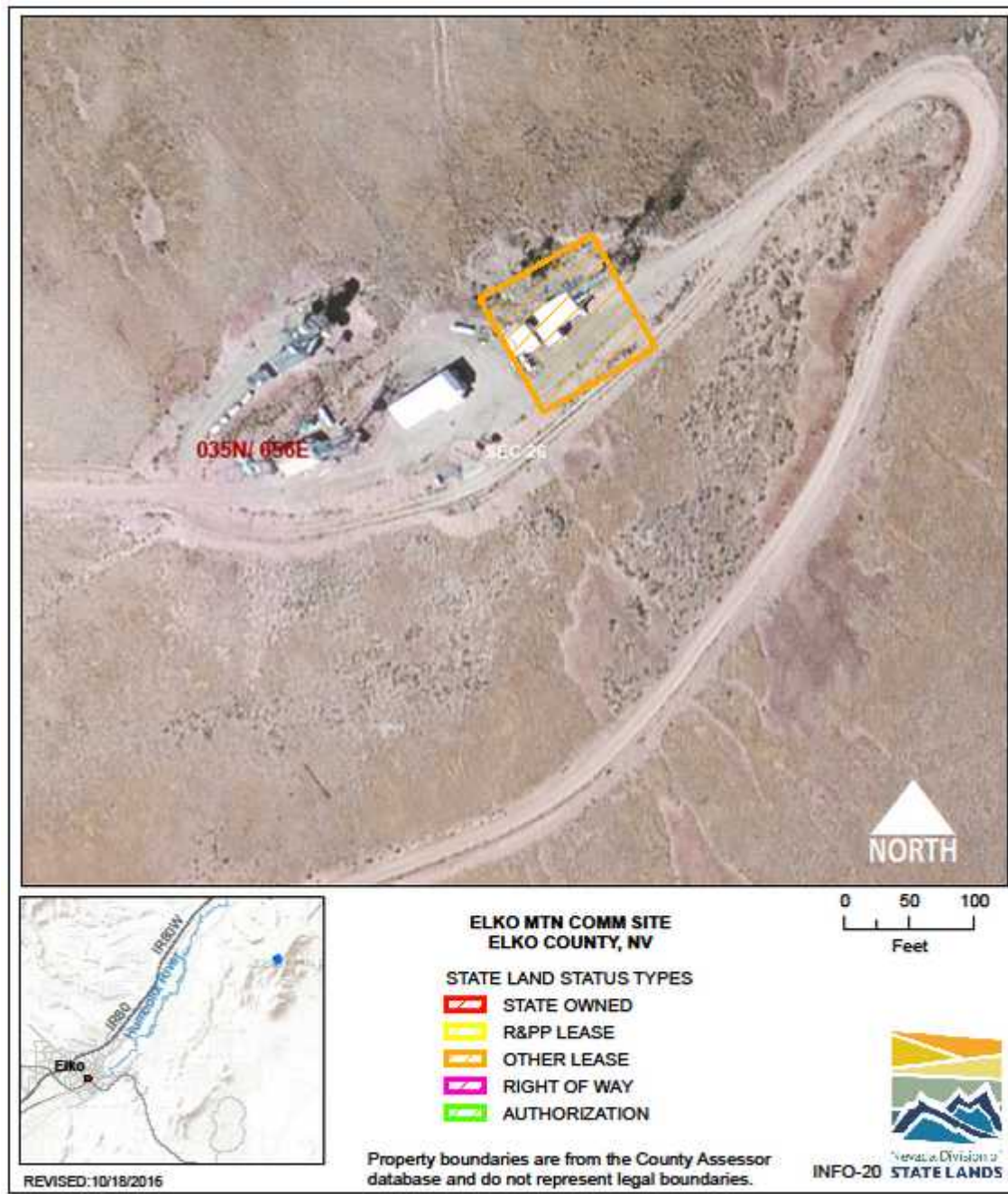
USE/AGENCY: Communications infrastructure/EITS

MEETS AGENCY LAND NEEDS (Y/N/STRATEGIC): Y

PERFORMING ASSET (Y/N/PARTIAL): Y

ISSUES/RESTRICTIONS: Lease expires 10/6/2027.

RECOMMENDATIONS: Retain for agency operations.



INFORMATION TECHNOLOGY: ELKO MOUNTAIN COMMUNICATION SITE INFO-20

LOCATION: NE of Elko, Elko County

ACRES: 0.23

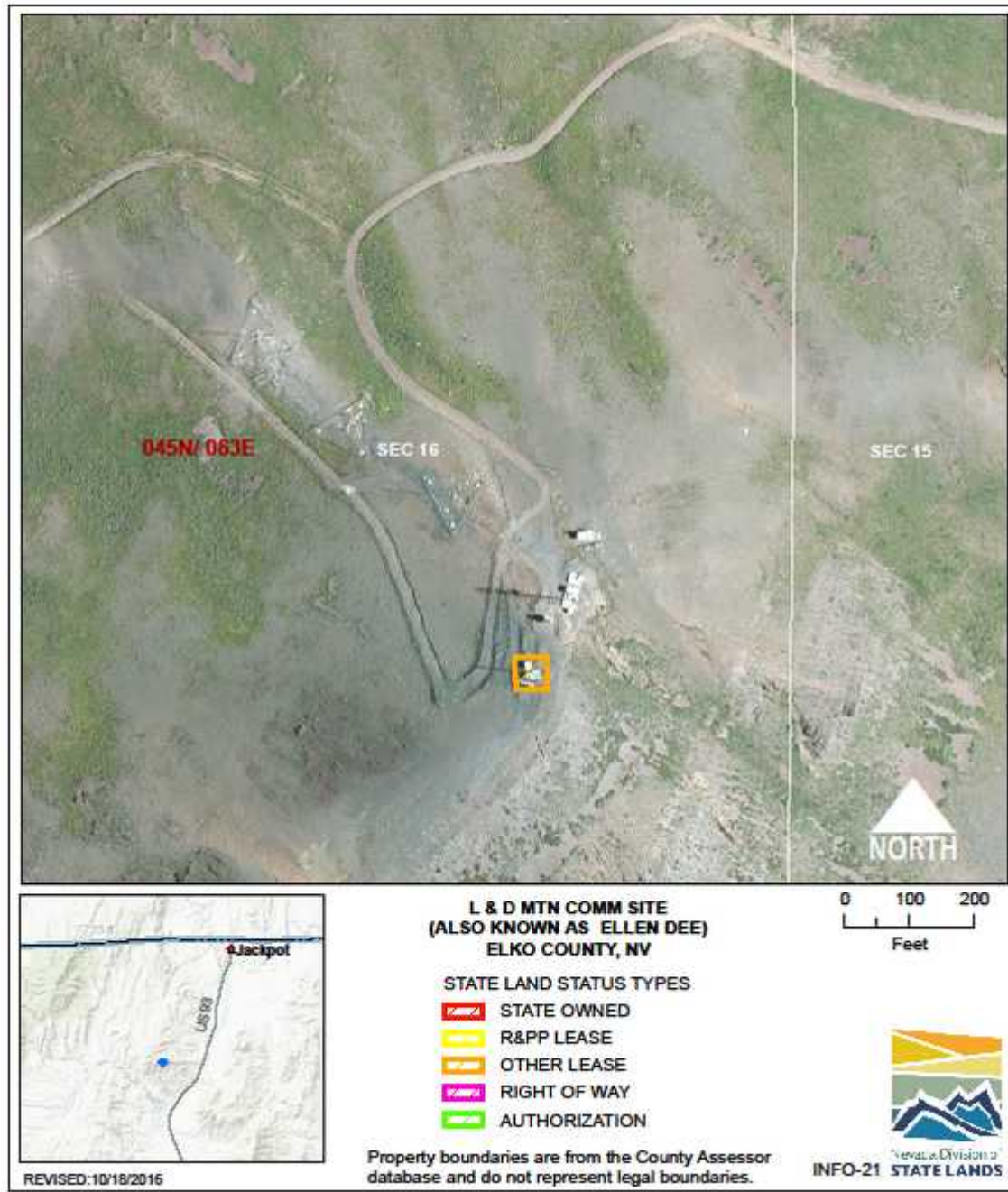
USE/AGENCY: Communications infrastructure/EITS

MEETS AGENCY LAND NEEDS (Y/N/STRATEGIC): Y

PERFORMING ASSET (Y/N/PARTIAL): Y

ISSUES/RESTRICTIONS: Lease expires 4/23/2019.

RECOMMENDATIONS: Retain for agency operations.



INFORMATION TECHNOLOGY: ELLEN D MOUNTAIN COMMUNICATION SITE INFO-21

LOCATION: N of Wells, Elko County

ACRES: 0.06

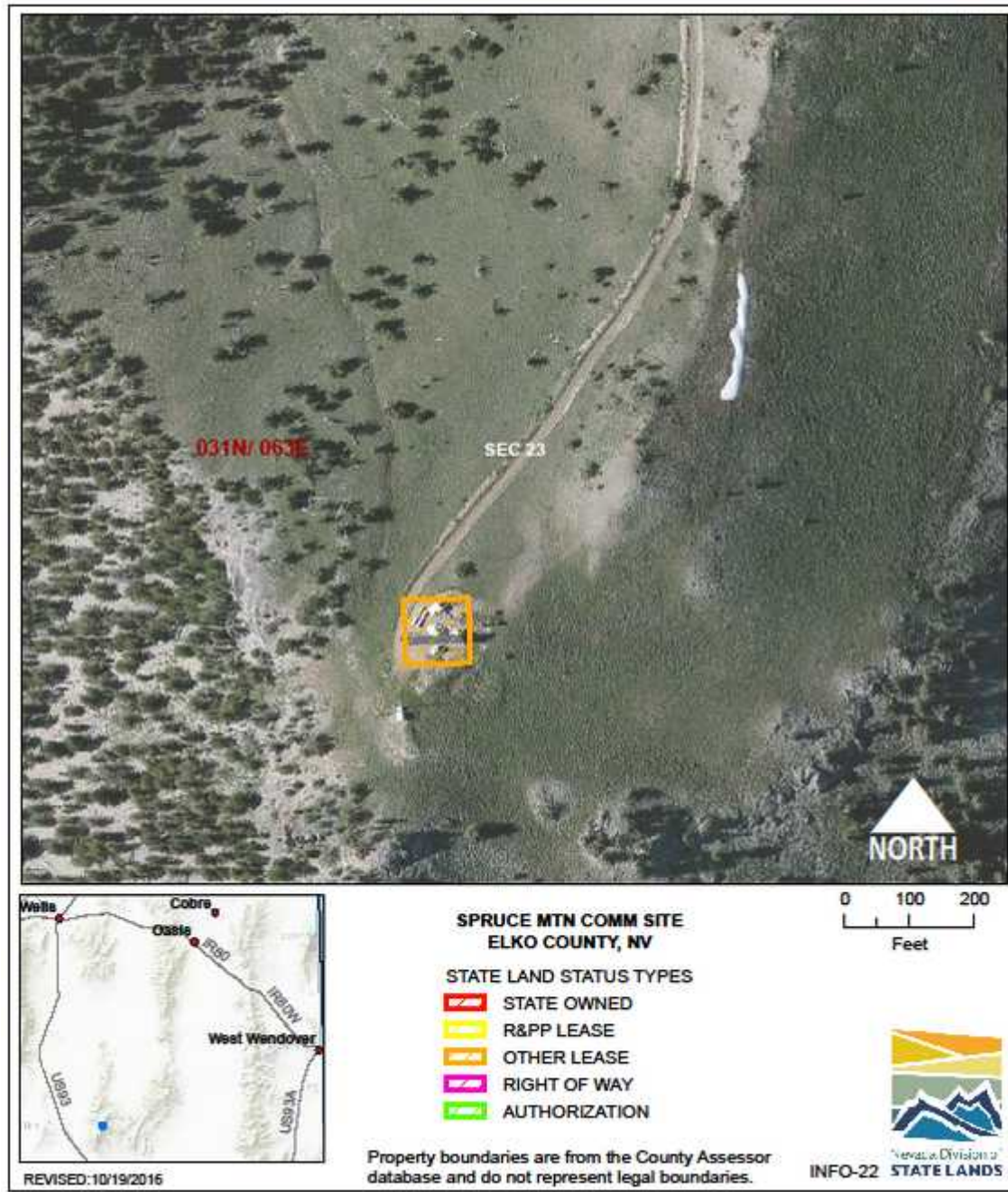
USE/AGENCY: Communications infrastructure/EITS

MEETS AGENCY LAND NEEDS (Y/N/STRATEGIC): Y

PERFORMING ASSET (Y/N/PARTIAL): Y

ISSUES/RESTRICTIONS: Lease expires 12/31/2039.

RECOMMENDATIONS: Retain for agency operations.



INFORMATION TECHNOLOGY: SPRUCE MOUNTAIN COMMUNICATION SITE INFO-22

LOCATION: S of Wells, Elko County

ACRES: 0.23

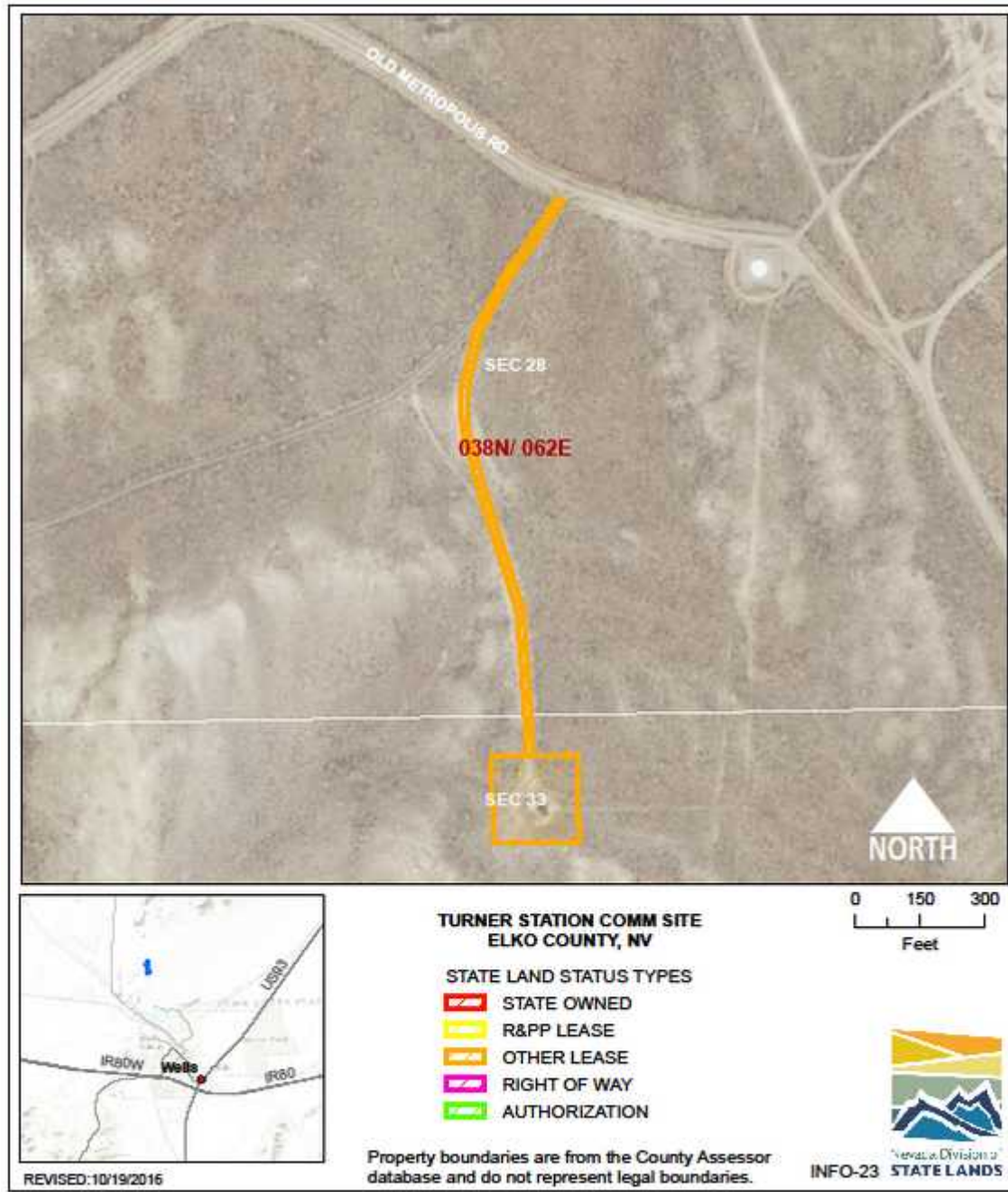
USE/AGENCY: Communications infrastructure/EITS

MEETS AGENCY LAND NEEDS (Y/N/STRATEGIC): Y

PERFORMING ASSET (Y/N/PARTIAL): Y

ISSUES/RESTRICTIONS: Lease expires 12/31/2026.

RECOMMENDATIONS: Retain for agency operations.



INFORMATION TECHNOLOGY: WELLS/TURNER COMMUNICATION SITE INFO-23

LOCATION: NW of Wells, Elko County

ACRES: 1.39

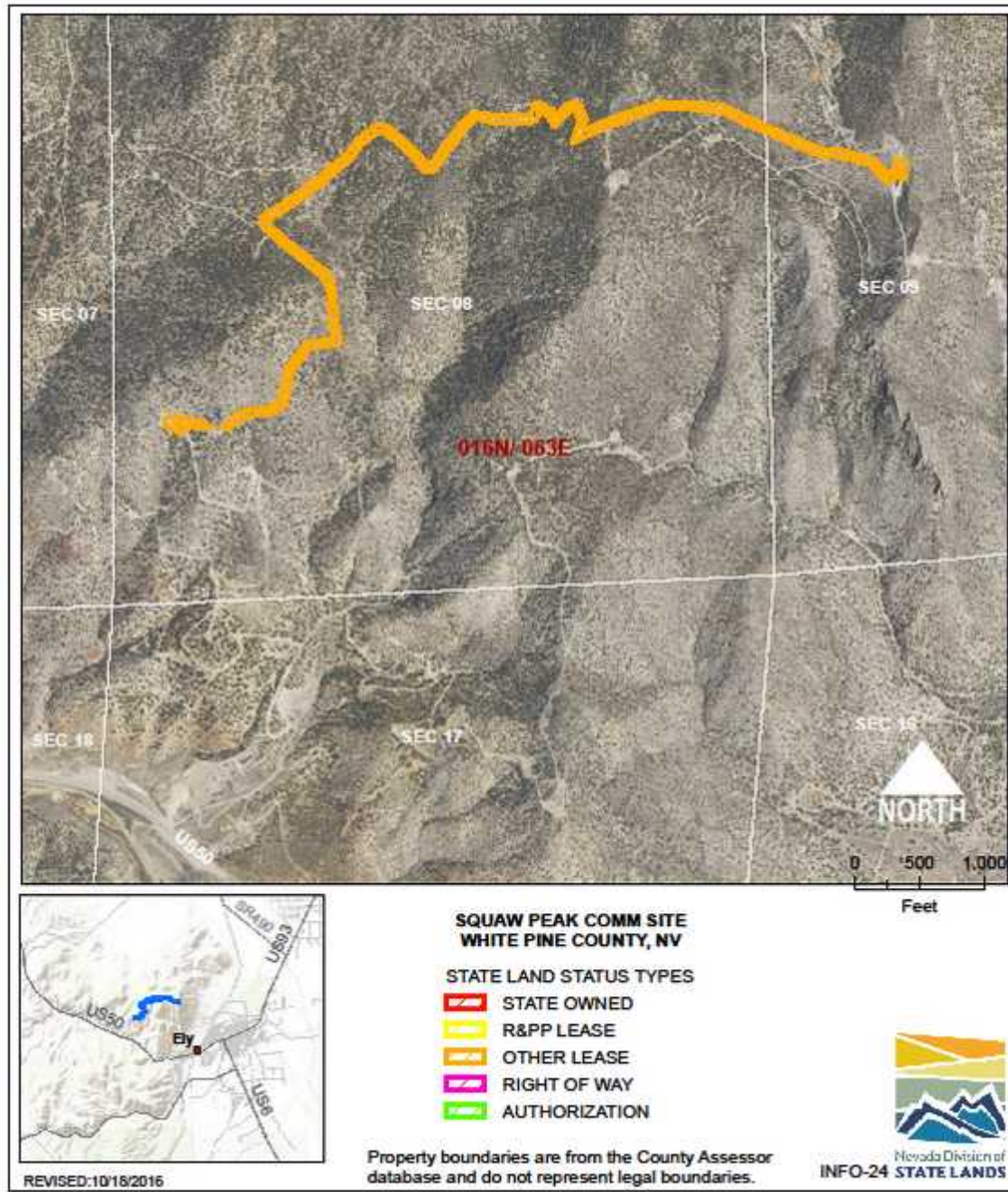
USE/AGENCY: Communications infrastructure/EITS

MEETS AGENCY LAND NEEDS (Y/N/STRATEGIC): Y

PERFORMING ASSET (Y/N/PARTIAL): Y

ISSUES/RESTRICTIONS: Lease expires 5/24/2025.

RECOMMENDATIONS: Retain for agency operations.



INFORMATION TECHNOLOGY: SQUAW PEAK COMMUNICATION SITE INFO-24

LOCATION: N of Ely, White Pine County

ACRES: 10.40

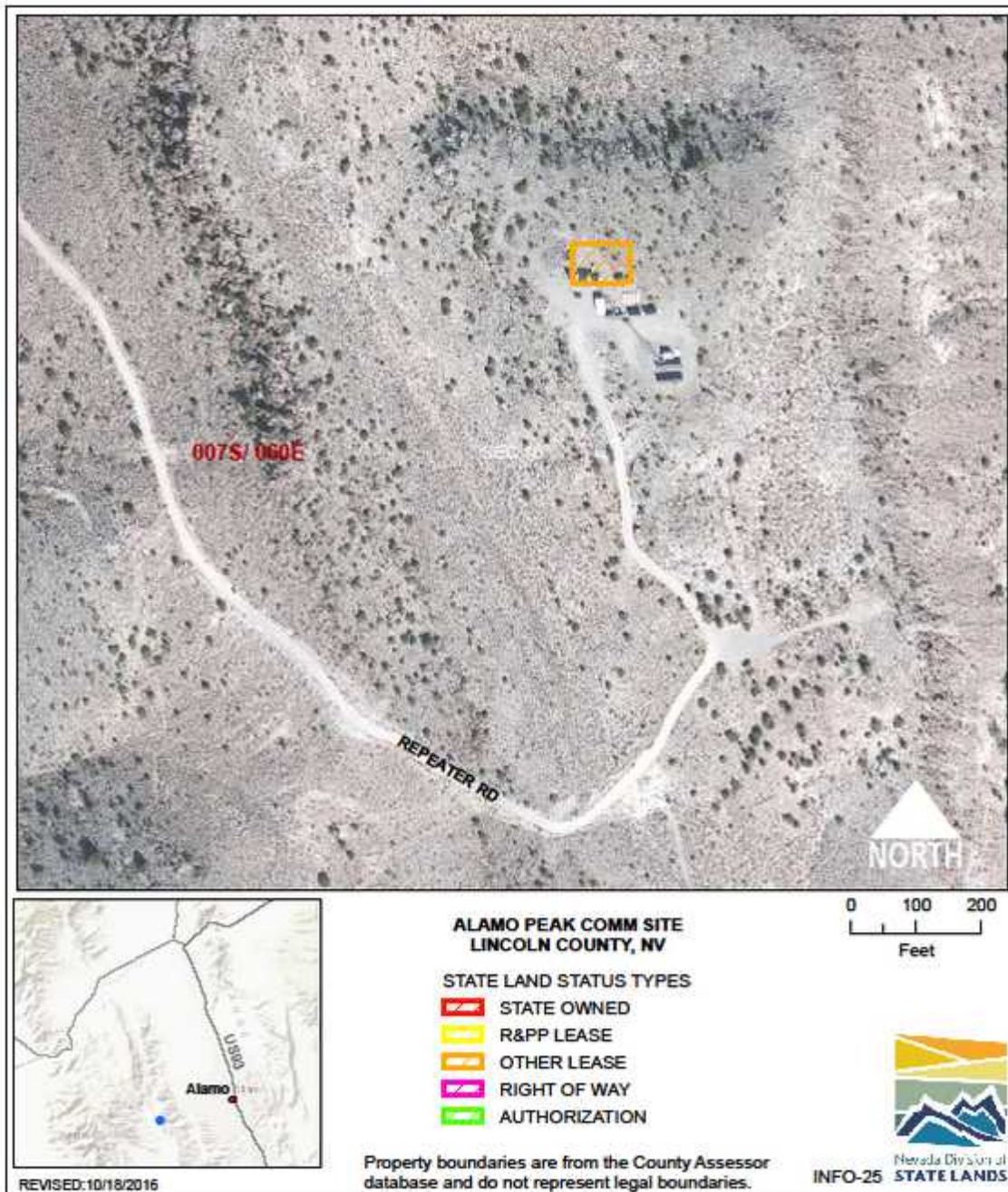
USE/AGENCY: Communications infrastructure/EITS

MEETS AGENCY LAND NEEDS (Y/N/STRATEGIC): Y

PERFORMING ASSET (Y/N/PARTIAL): Y

ISSUES/RESTRICTIONS: Lease expires 4/25/2039.

RECOMMENDATIONS: Retain for agency operations.



INFORMATION TECHNOLOGY: ALAMO PEAK COMMUNICATION SITE INFO-25

LOCATION: W of Alamo, Lincoln County

ACRES: 0.12

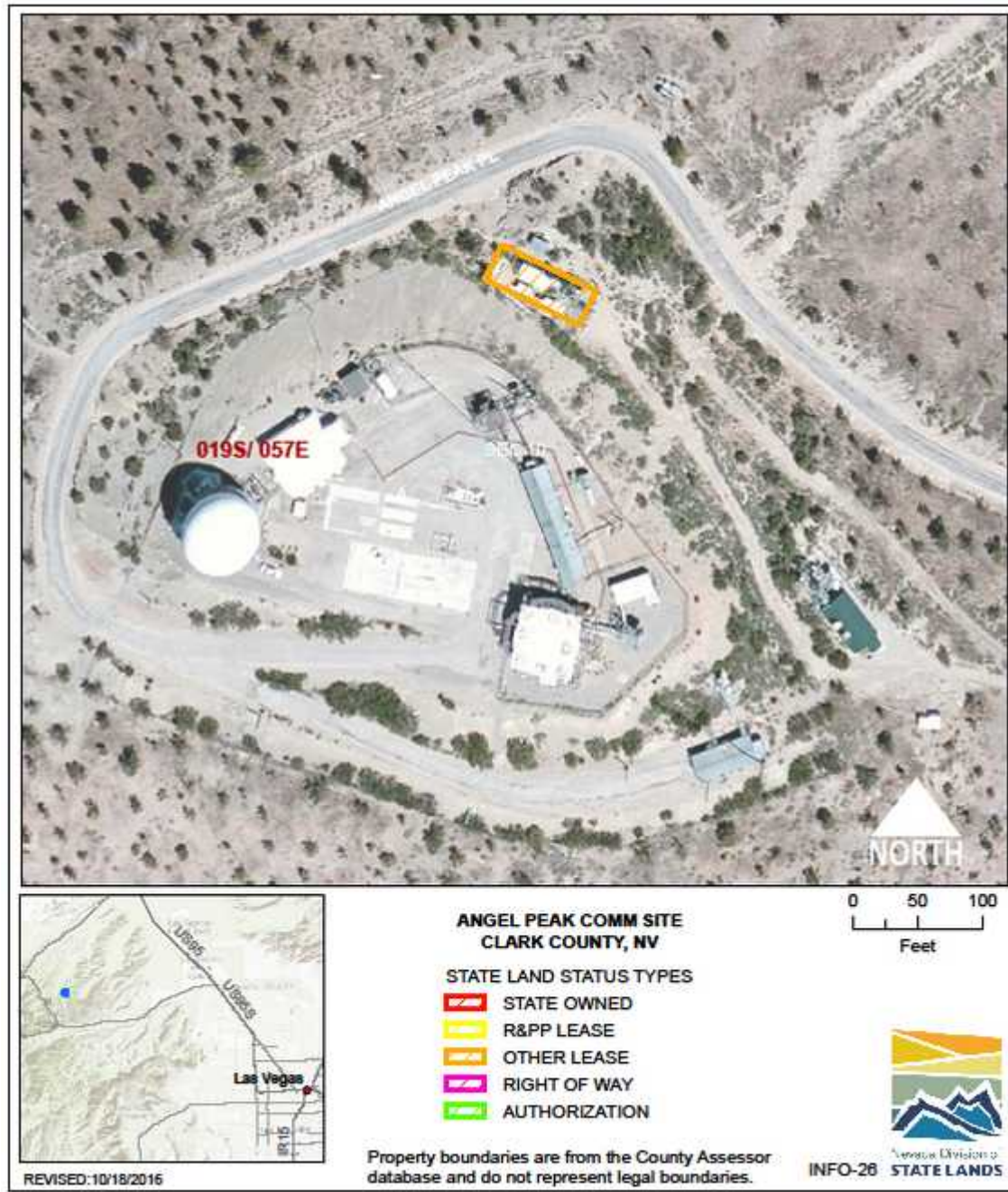
USE/AGENCY: Communications infrastructure/EITS

MEETS AGENCY LAND NEEDS (Y/N/STRATEGIC): Y

PERFORMING ASSET (Y/N/PARTIAL): Y

ISSUES/RESTRICTIONS: Lease expires 12/31/2031.

RECOMMENDATIONS: Retain for agency operations.



INFORMATION TECHNOLOGY: ANGEL PEAK COMMUNICATION SITE INFO-26

LOCATION: Mt. Charleston, Clark County

ACRES: 0.06

USE/AGENCY: Communications infrastructure/EITS

MEETS AGENCY LAND NEEDS (Y/N/STRATEGIC): Y

PERFORMING ASSET (Y/N/PARTIAL): Y

ISSUES/RESTRICTIONS: Lease expires 3/3/2021.

RECOMMENDATIONS: Retain for agency operations.



INFORMATION TECHNOLOGY: HIGHLAND PEAK COMMUNICATION SITE INFO-28

LOCATION: SW of Pioche, Lincoln County

ACRES: 0.23

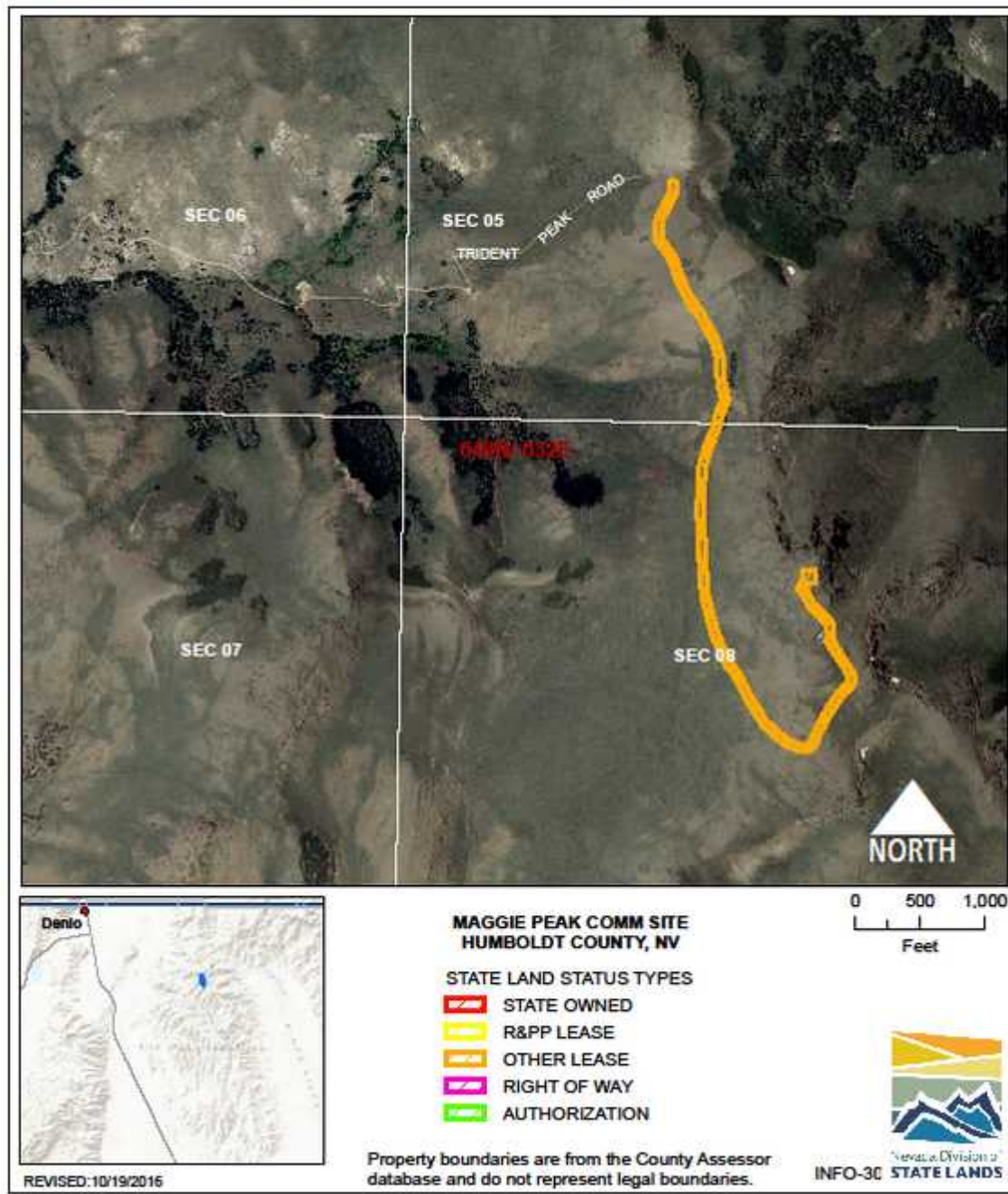
USE/AGENCY: Communications infrastructure/EITS

MEETS AGENCY LAND NEEDS (Y/N/STRATEGIC): Y

PERFORMING ASSET (Y/N/PARTIAL): Y

ISSUES/RESTRICTIONS: Lease expires 5/1/2022.

RECOMMENDATIONS: Retain for agency operations.



INFORMATION TECHNOLOGY: MAGGIE PEAK/TRIDENT COMMUNICATION SITE INFO 30

LOCATION: SE of Denio, Humboldt County

ACRES: 7.56

USE/AGENCY: Communications infrastructure/eits

MEETS AGENCY LAND NEEDS (Y/N/STRATEGIC): Y

PERFORMING ASSET (Y/N/PARTIAL): Y

ISSUES/RESTRICTIONS: Lease expires 12/31/2046

RECOMMENDATIONS: Retain for agency operations.



INFORMATION TECHNOLOGY: WINNEMUCCA COMMUNICATION SITE INFO-31

LOCATION: NW of Winnemucca, Humboldt County

ACRES: 0.28

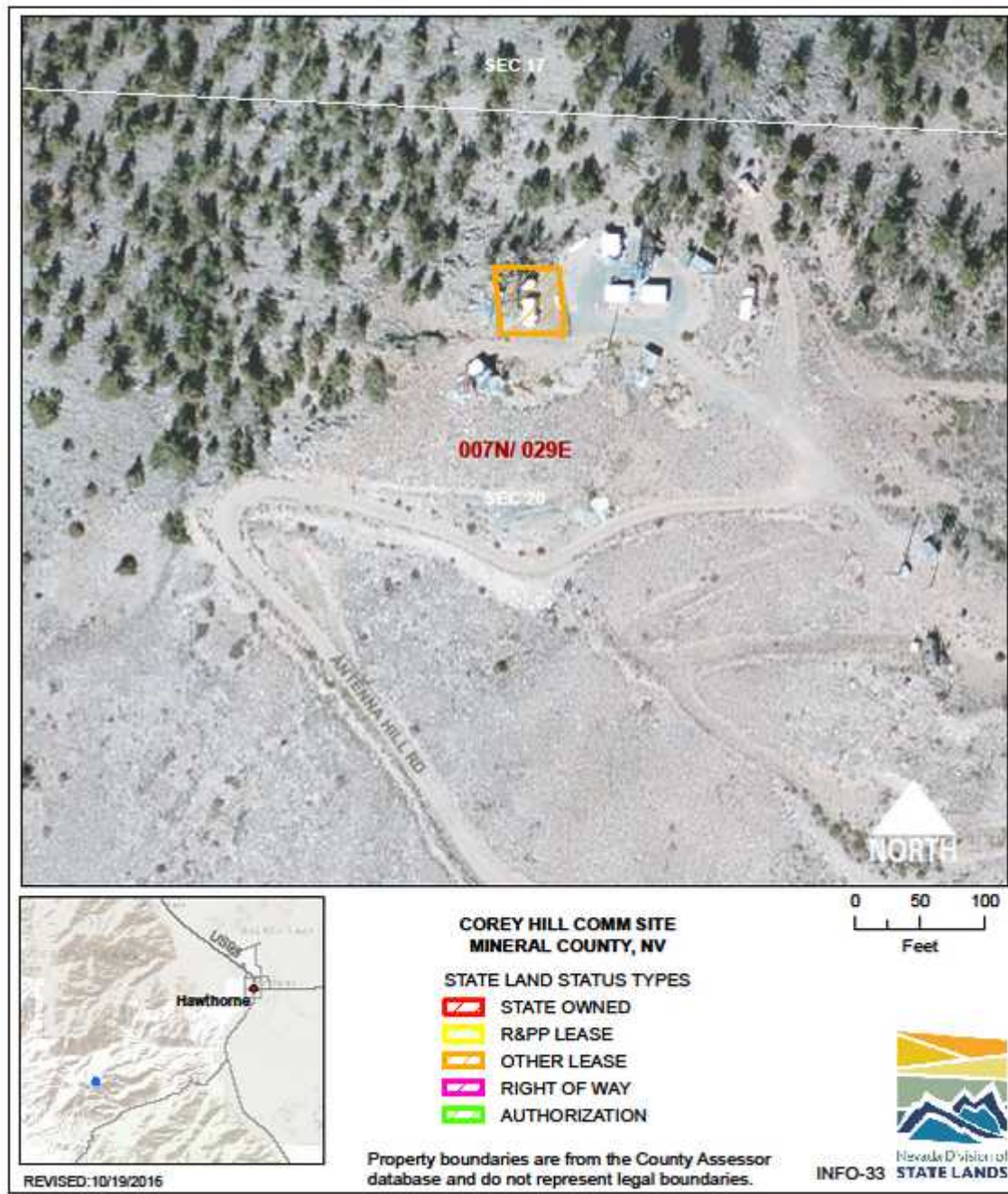
USE/AGENCY: Communications infrastructure/EITS

MEETS AGENCY LAND NEEDS (Y/N/STRATEGIC): Y

PERFORMING ASSET (Y/N/PARTIAL): Y

ISSUES/RESTRICTIONS:

RECOMMENDATIONS: Retain for agency operations.



INFORMATION TECHNOLOGY: TV HILL/COREY PEAK COMMUNICATION SITE INFO-33

LOCATION: SW of Hawthorne, Mineral County

ACRES: 0.06

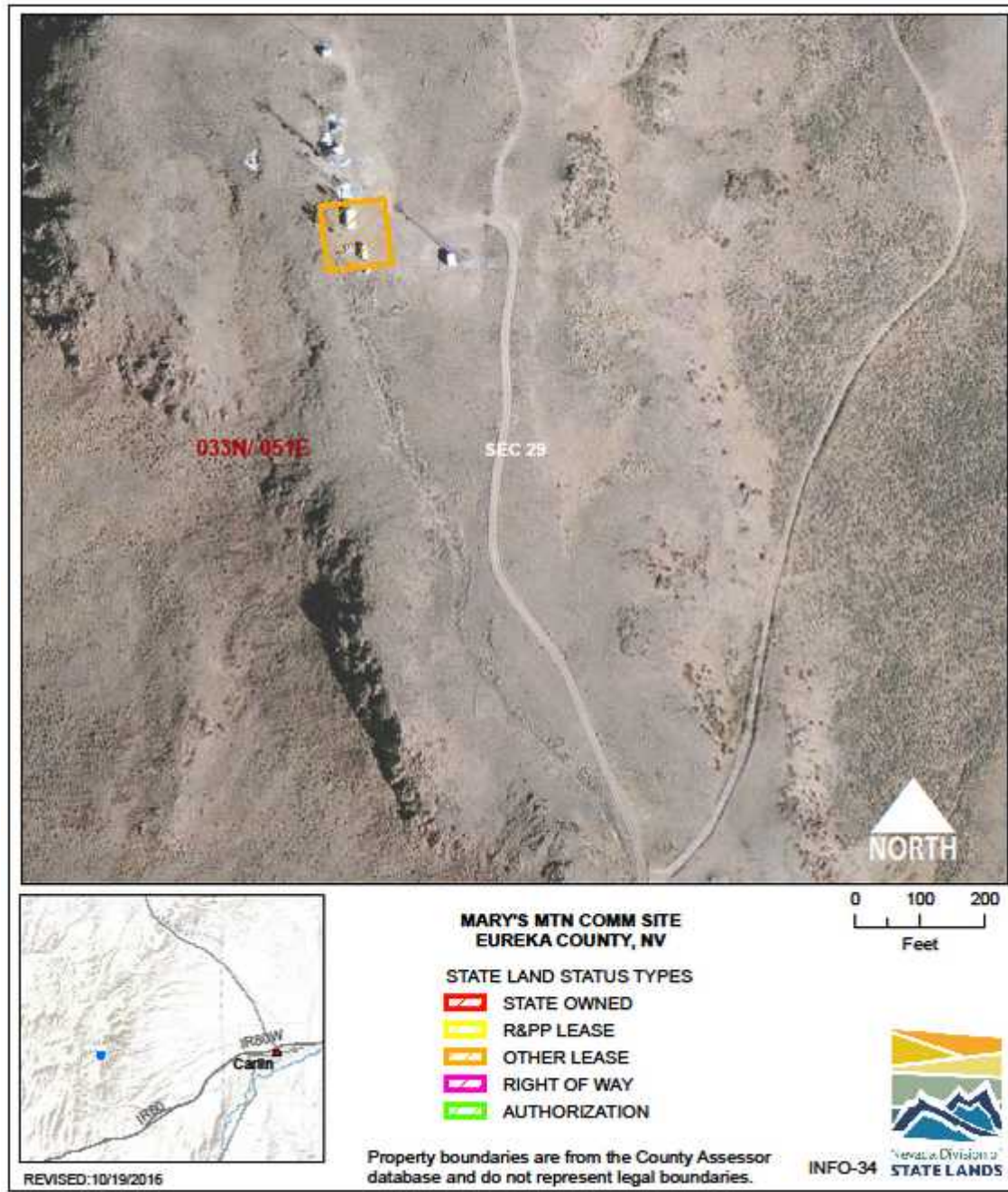
USE/AGENCY: Communications infrastructure/EITS

MEETS AGENCY LAND NEEDS (Y/N/STRATEGIC): Y

PERFORMING ASSET (Y/N/PARTIAL): Y

ISSUES/RESTRICTIONS: Lease expires 9/29/2021.

RECOMMENDATIONS: Retain for agency operations.



INFORMATION TECHNOLOGY: MARYS MOUNTAIN COMMUNICATION SITE INFO-34

LOCATION: NW of Carlin, Eureka County

ACRES: 0.23

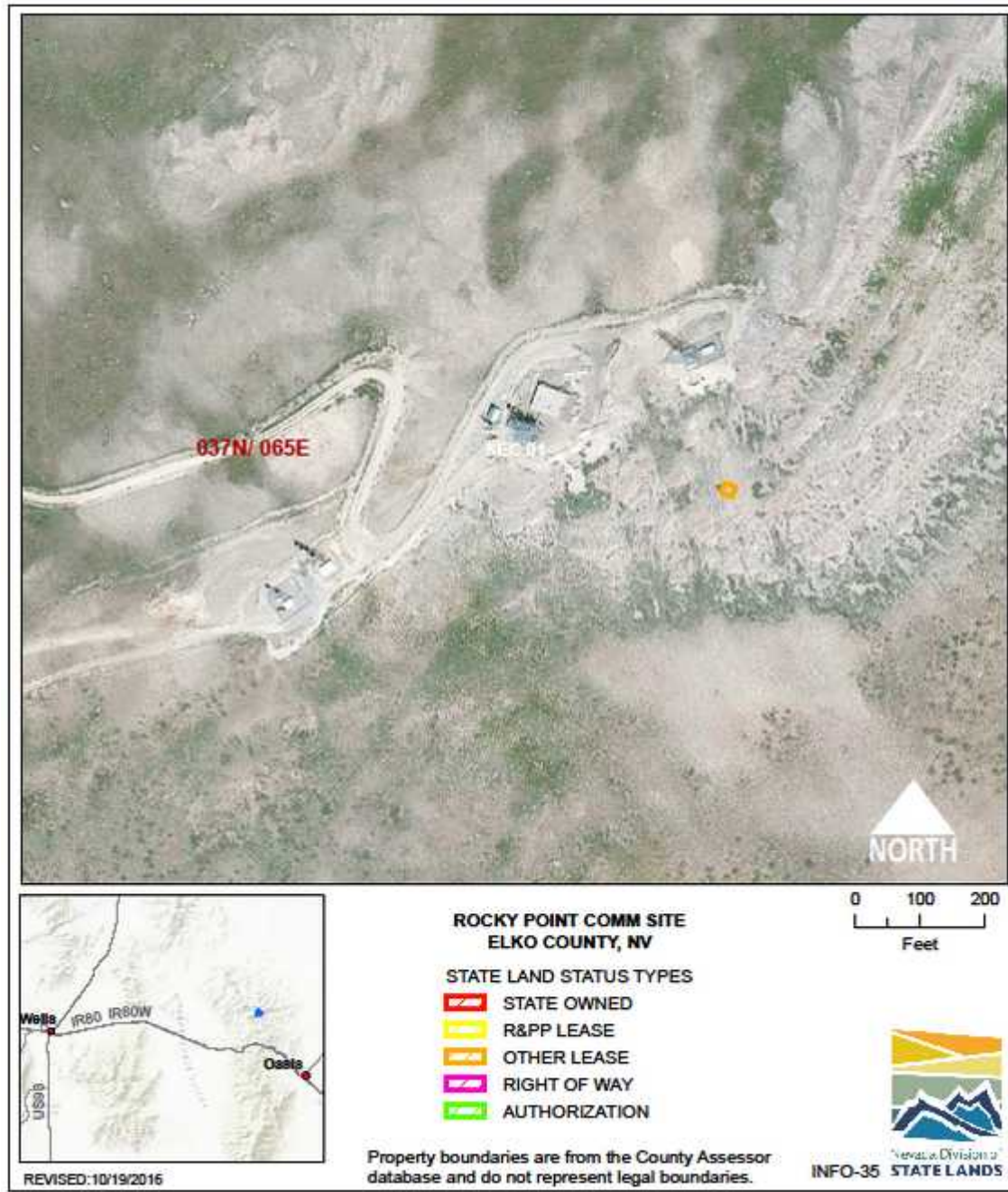
USE/AGENCY: Communications infrastructure/EITS

MEETS AGENCY LAND NEEDS (Y/N/STRATEGIC): Y

PERFORMING ASSET (Y/N/PARTIAL): Y

ISSUES/RESTRICTIONS: Private land lease expires 11/5/2022.

RECOMMENDATIONS:



INFORMATION TECHNOLOGY: ROCKY POINT COMMUNICATION SITE INFO-35

LOCATION: NE of Wells, Elko County

ACRES: 0.01

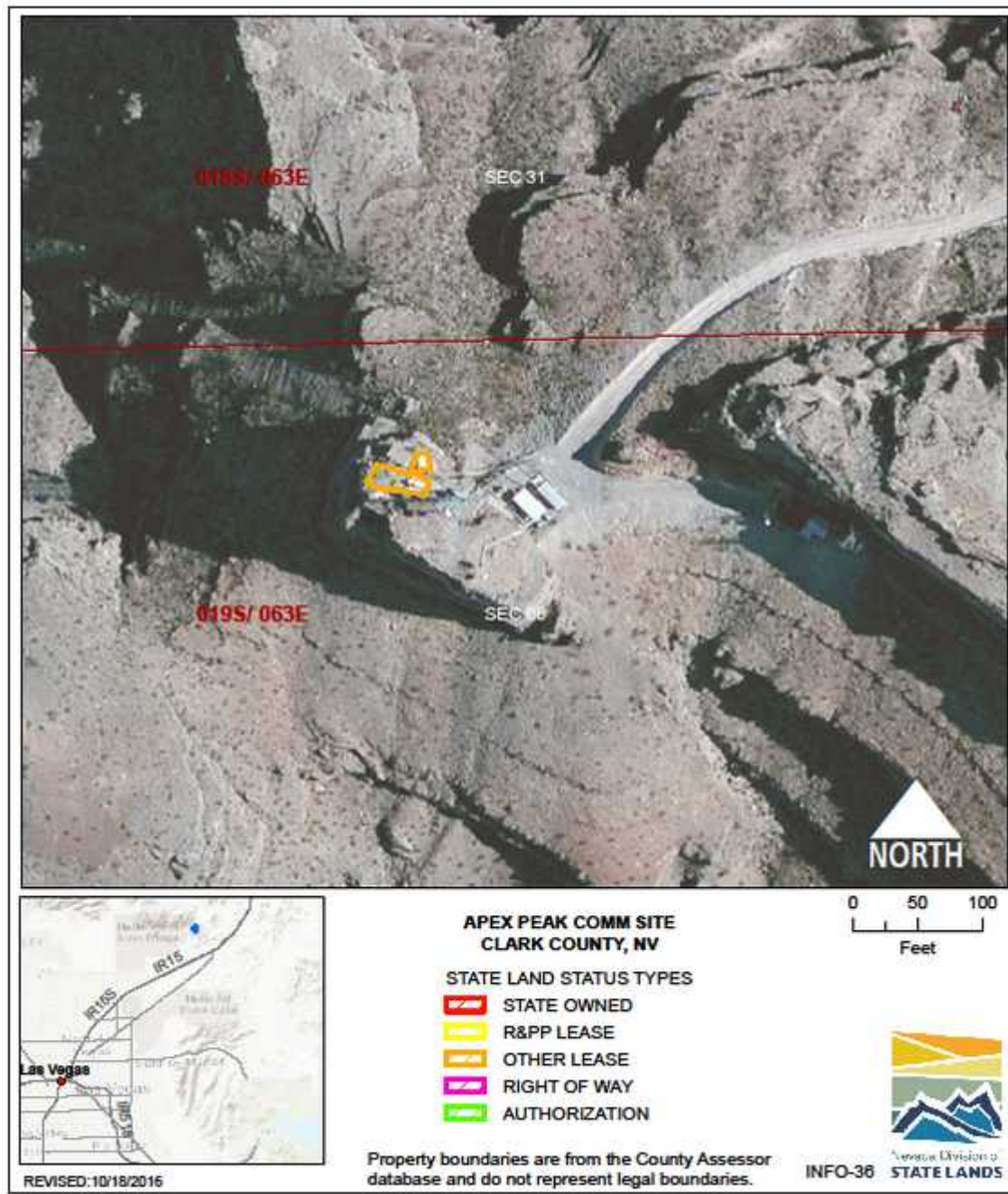
USE/AGENCY: Communications infrastructure/EITS

MEETS AGENCY LAND NEEDS (Y/N/STRATEGIC): Y

PERFORMING ASSET (Y/N/PARTIAL): Y

ISSUES/RESTRICTIONS: Lease expires 9/30/2015.

RECOMMENDATIONS: Retain for future agency operations



INFORMATION TECHNOLOGY: APEX PEAK COMMUNICATION SITE INFO-36

LOCATION: NE of N Las Vegas, Clark County

ACRES: 0.02

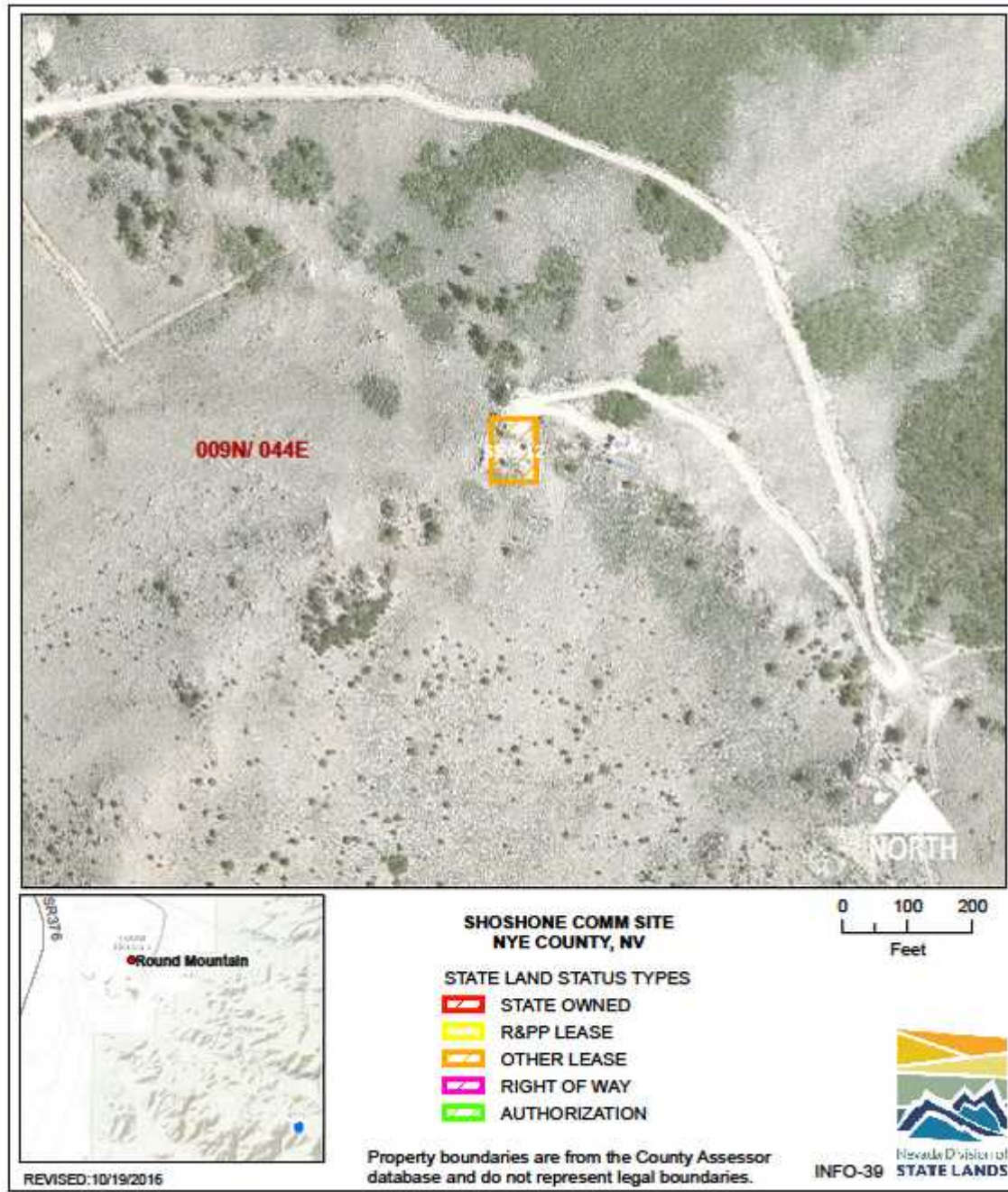
USE/AGENCY: Communications infrastructure/EITS

MEETS AGENCY LAND NEEDS (Y/N/STRATEGIC): Y

PERFORMING ASSET (Y/N/PARTIAL): Y

ISSUES/RESTRICTIONS: Lease expires 4/12/2016.

RECOMMENDATIONS: Retain for agency operations.



INFORMATION TECHNOLOGY: SHOSHONE COMMUNICATION SITE INFO-39

LOCATION: E of Round Mountain, Nye County

ACRES: 0.16

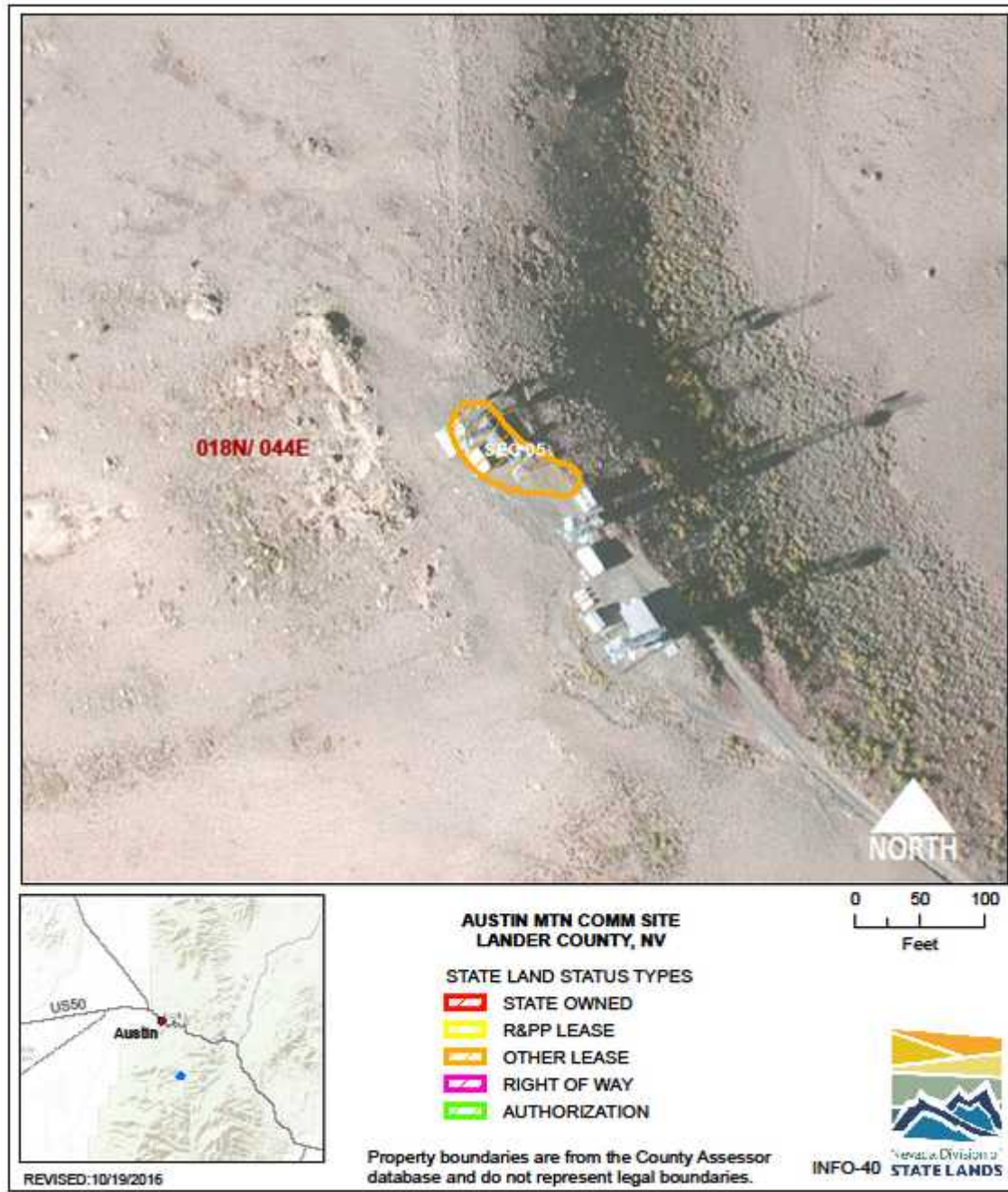
USE/AGENCY: Communications infrastructure/EITS

MEETS AGENCY LAND NEEDS (Y/N/STRATEGIC): N

PERFORMING ASSET (Y/N/PARTIAL): N

ISSUES/RESTRICTIONS: Lease expires 12/31/2016.

RECOMMENDATIONS: No EITS use, NDF has equipment there, transfer to NDF.



INFORMATION TECHNOLOGY: AUSTIN PEAK COMMUNICATION SITE INFO-40

LOCATION: Austin, Lander County

ACRES: 0.09

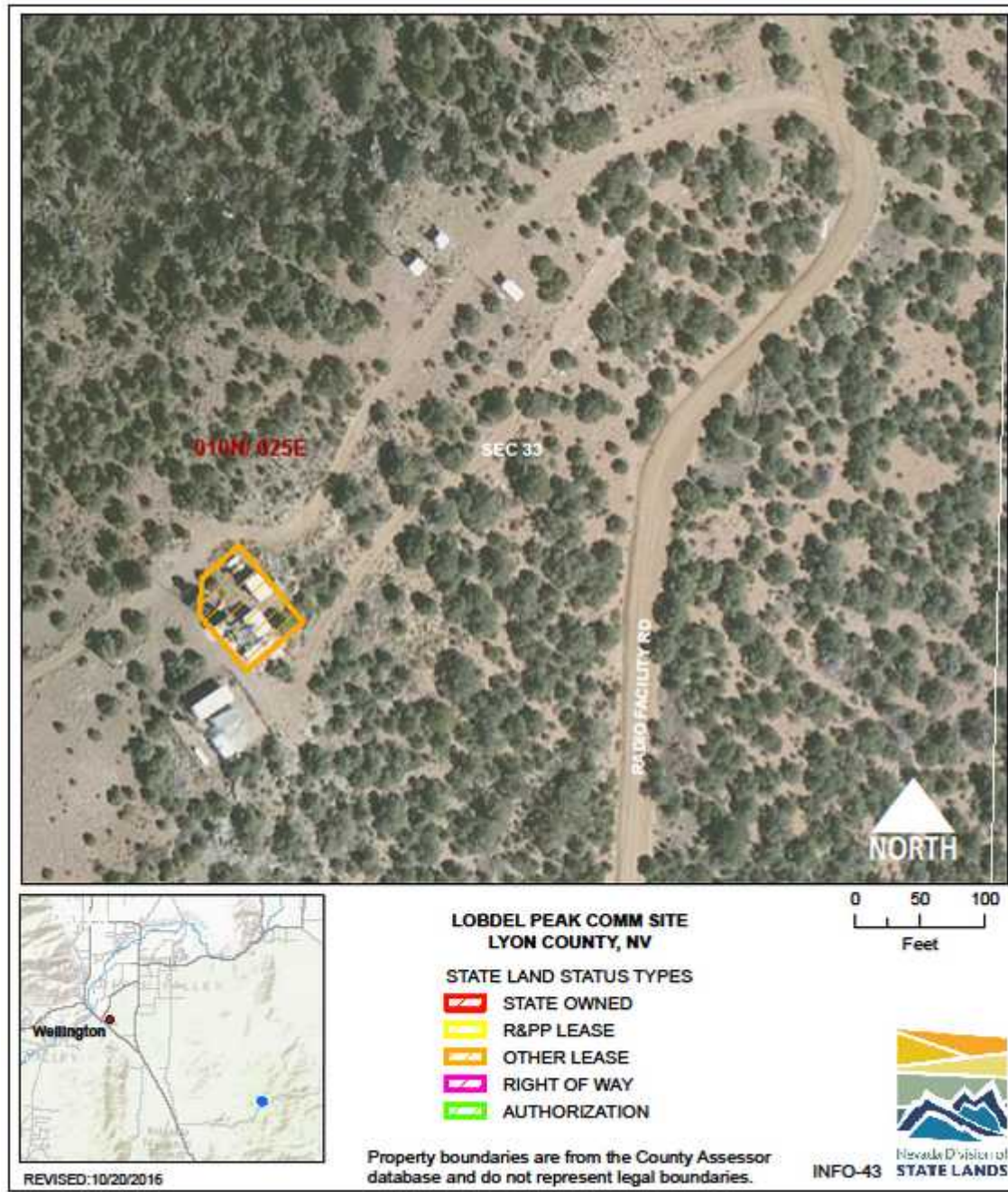
USE/AGENCY: Communications infrastructure/EITS

MEETS AGENCY LAND NEEDS (Y/N/STRATEGIC): S

PERFORMING ASSET (Y/N/PARTIAL): Y

ISSUES/RESTRICTIONS: Lease expires 12/31/2016.

RECOMMENDATIONS: Retain for agency operations. Need land expansion.



INFORMATION TECHNOLOGY: PINE GROVE COMMUNICATION SITE INFO-43

LOCATION: SE of Wellington, Lyon County

ACRES: 0.10

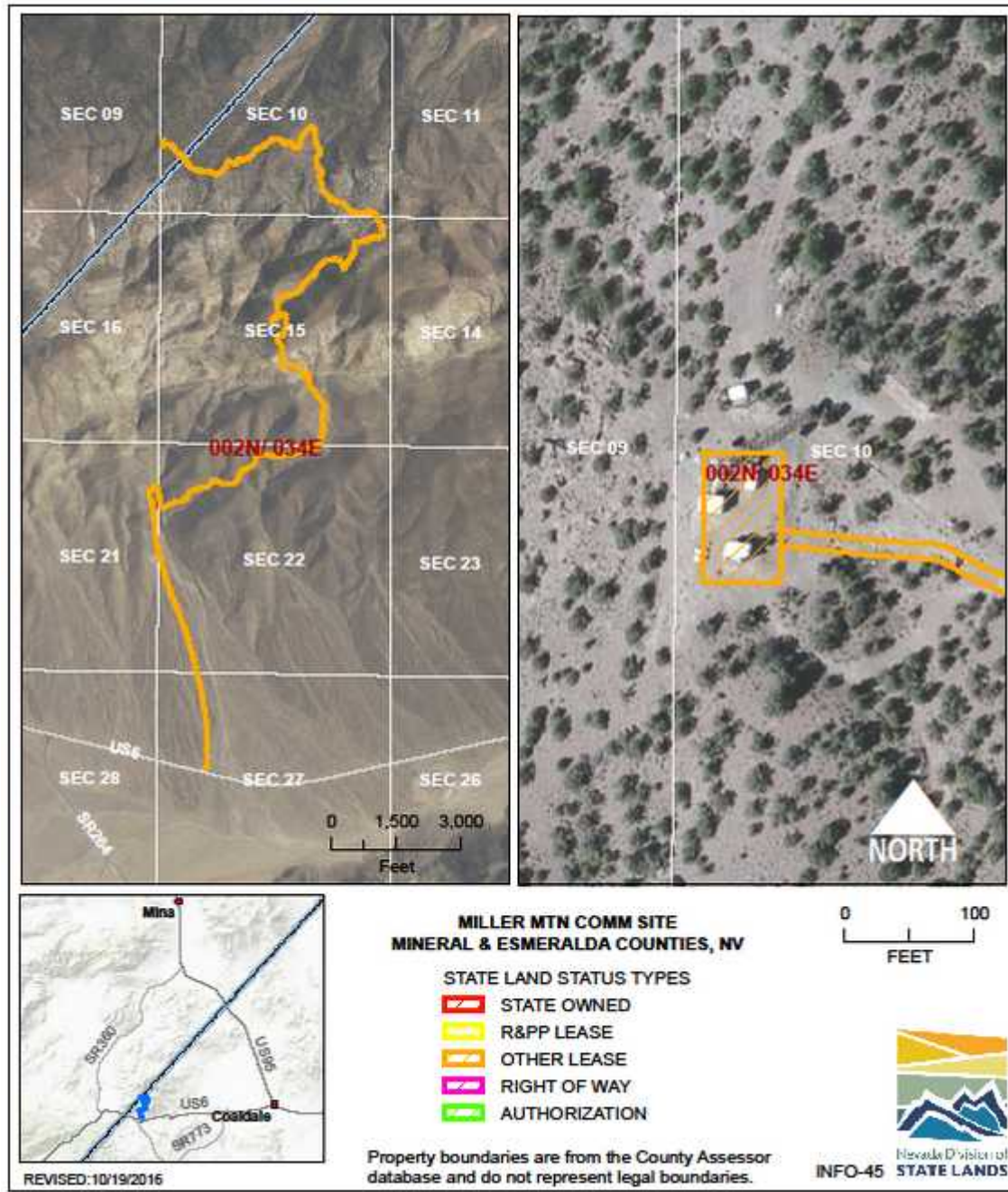
USE/AGENCY: Communications infrastructure/EITS

MEETS AGENCY LAND NEEDS (Y/N/STRATEGIC): Y

PERFORMING ASSET (Y/N/PARTIAL): Y

ISSUES/RESTRICTIONS: Lease expires 12/31/2039.

RECOMMENDATIONS: Retain for agency operations.



INFORMATION TECHNOLOGY: MILLER MOUNTAIN COMMUNICATION SITE INFO-45

LOCATION: E of Coaldale Jct., Esmeralda and Mineral Counties

ACRES: 7.87

USE/AGENCY: Communications infrastructure/EITS

MEETS AGENCY LAND NEEDS (Y/N/STRATEGIC): Y

PERFORMING ASSET (Y/N/PARTIAL): Y

ISSUES/RESTRICTIONS: Lease expires 11/16/2028.

RECOMMENDATIONS: Retain for agency operations.



INFORMATION TECHNOLOGY: SAWTOOTH MOUNTAIN COMMUNICATION SITE INFO-46

LOCATION: NW of Beatty, Nye County

ACRES: 0.11

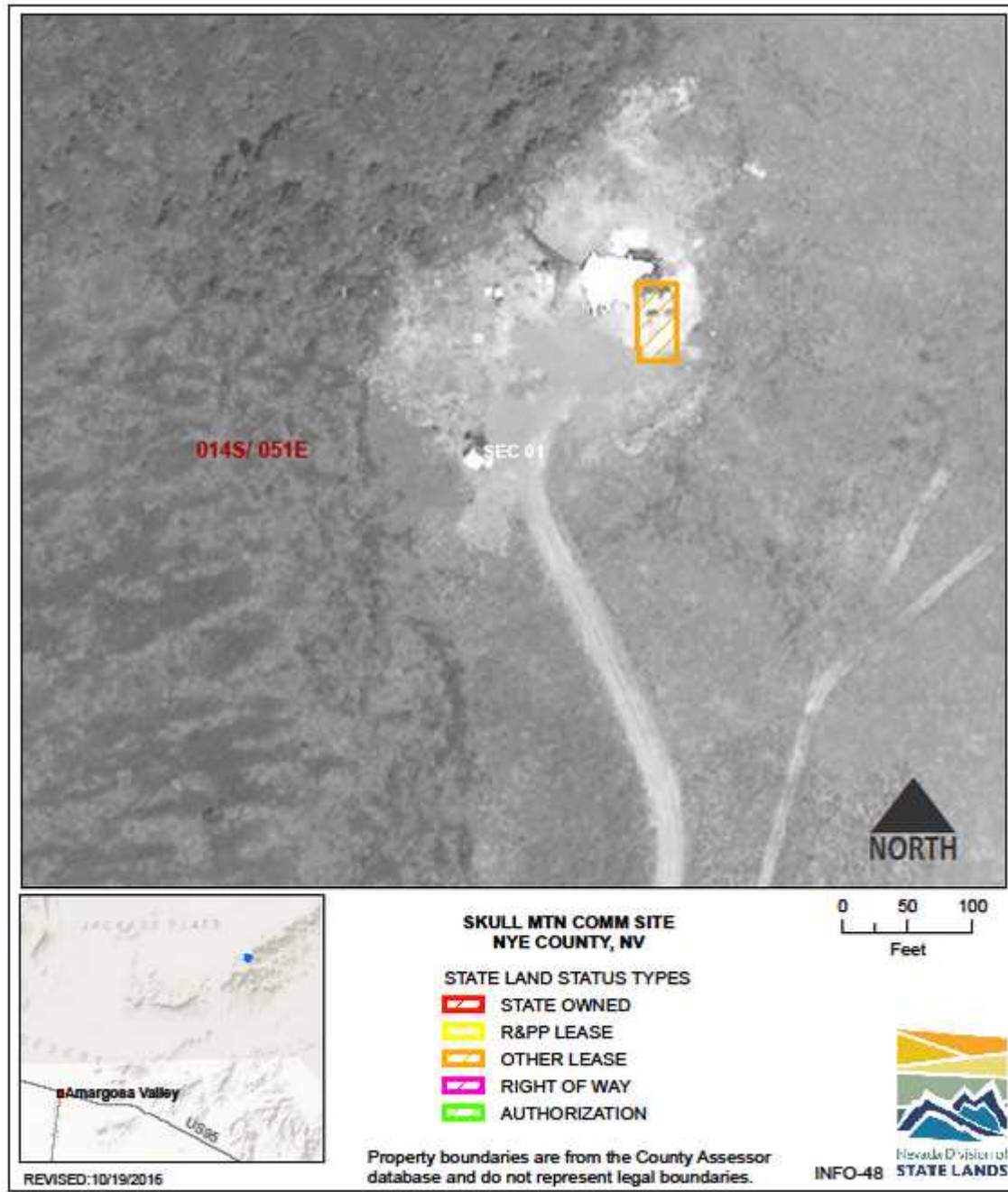
USE/AGENCY: Communications infrastructure/EITS

MEETS AGENCY LAND NEEDS (Y/N/STRATEGIC): Y

PERFORMING ASSET (Y/N/PARTIAL): Y

ISSUES/RESTRICTIONS: Lease expires 12/31/2017.

RECOMMENDATIONS: Retain for agency operations.



INFORMATION TECHNOLOGY: SKULL MOUNTAIN COMMUNICATION SITE INFO-48

LOCATION: NE of Amargosa Valley, Nye County

ACRES: 0.04

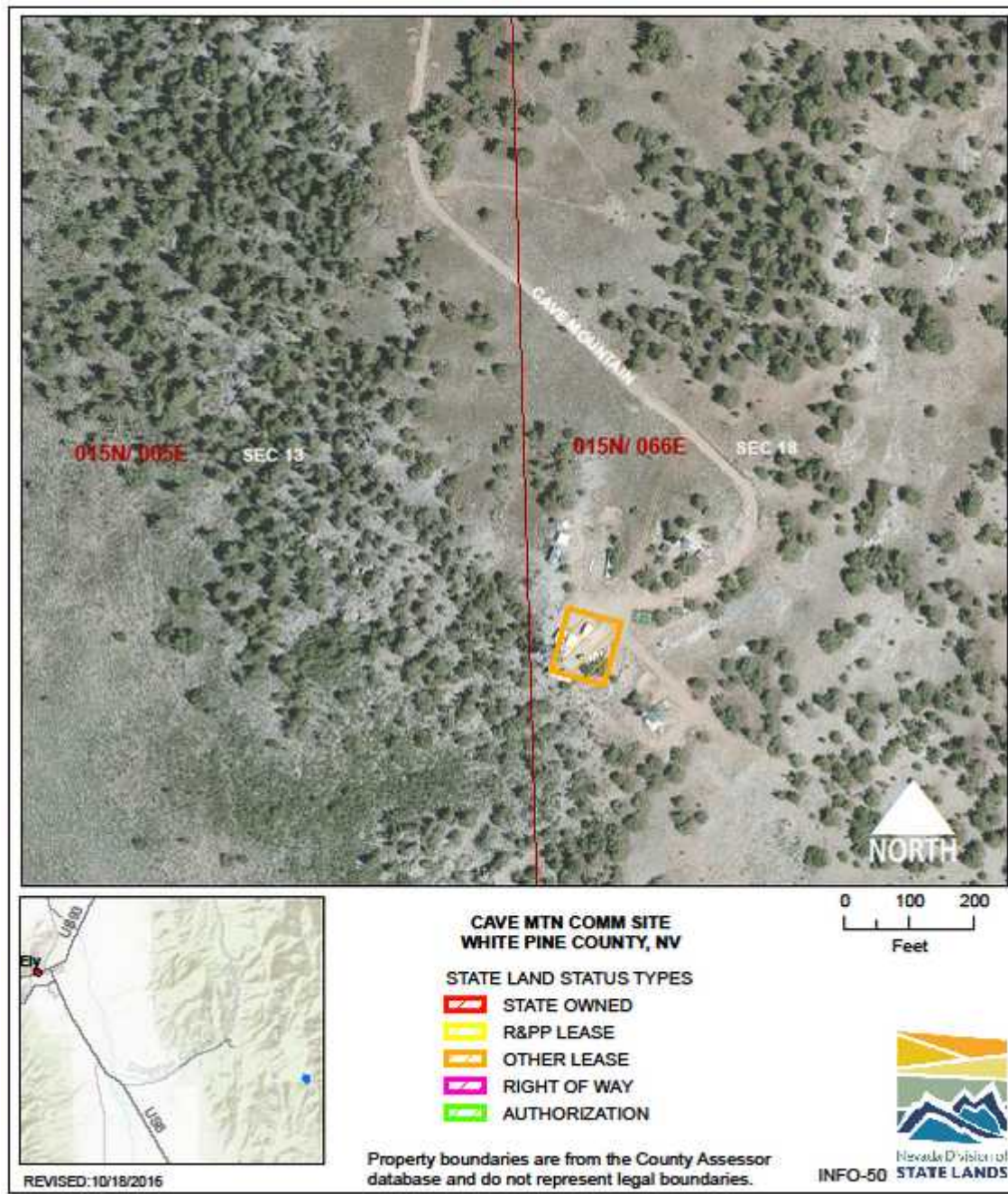
USE/AGENCY: Communications infrastructure/EITS

MEETS AGENCY LAND NEEDS (Y/N/STRATEGIC): Y

PERFORMING ASSET (Y/N/PARTIAL): Y

ISSUES/RESTRICTIONS: Lease expires 4/30/2015.

RECOMMENDATIONS: Retain for agency operations.



INFORMATION TECHNOLOGY: CAVE MOUNTAIN COMMUNICATION SITE INFO-50

LOCATION: SE of Ely, White Pine County

ACRES: 0.19

USE/AGENCY: Communications infrastructure/EITS

MEETS AGENCY LAND NEEDS (Y/N/STRATEGIC): Y

PERFORMING ASSET (Y/N/PARTIAL): Y

ISSUES/RESTRICTIONS: Lease expires 12/31/2023.

RECOMMENDATIONS: Retain for agency operations.



INFORMATION TECHNOLOGY: BEAVER DAM/UTAH HILL COMMUNICATION SITE INFO-51

LOCATION: E of Panaca, Lincoln County

ACRES: 0.06

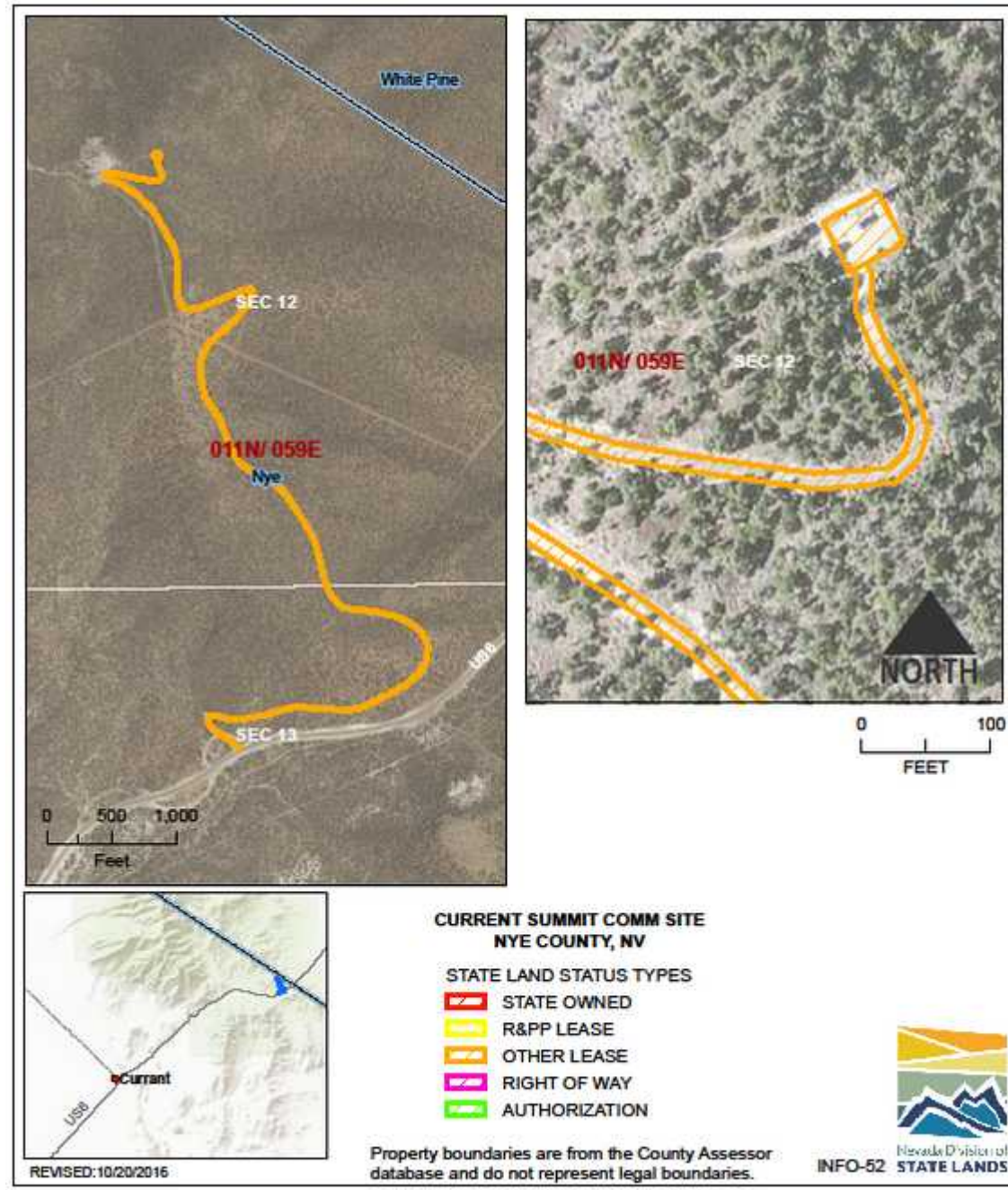
USE/AGENCY: Communications infrastructure/EITS

MEETS AGENCY LAND NEEDS (Y/N/STRATEGIC): Y

PERFORMING ASSET (Y/N/PARTIAL): y

ISSUES/RESTRICTIONS: Lease expires 7/29/2034.

RECOMMENDATIONS: Retain for agency operations.



INFORMATION TECHNOLOGY: CURREANT COMMUNICATION SITE INFO-52

LOCATION: NE of Curren and US6, Nye County

ACRES: 2.41

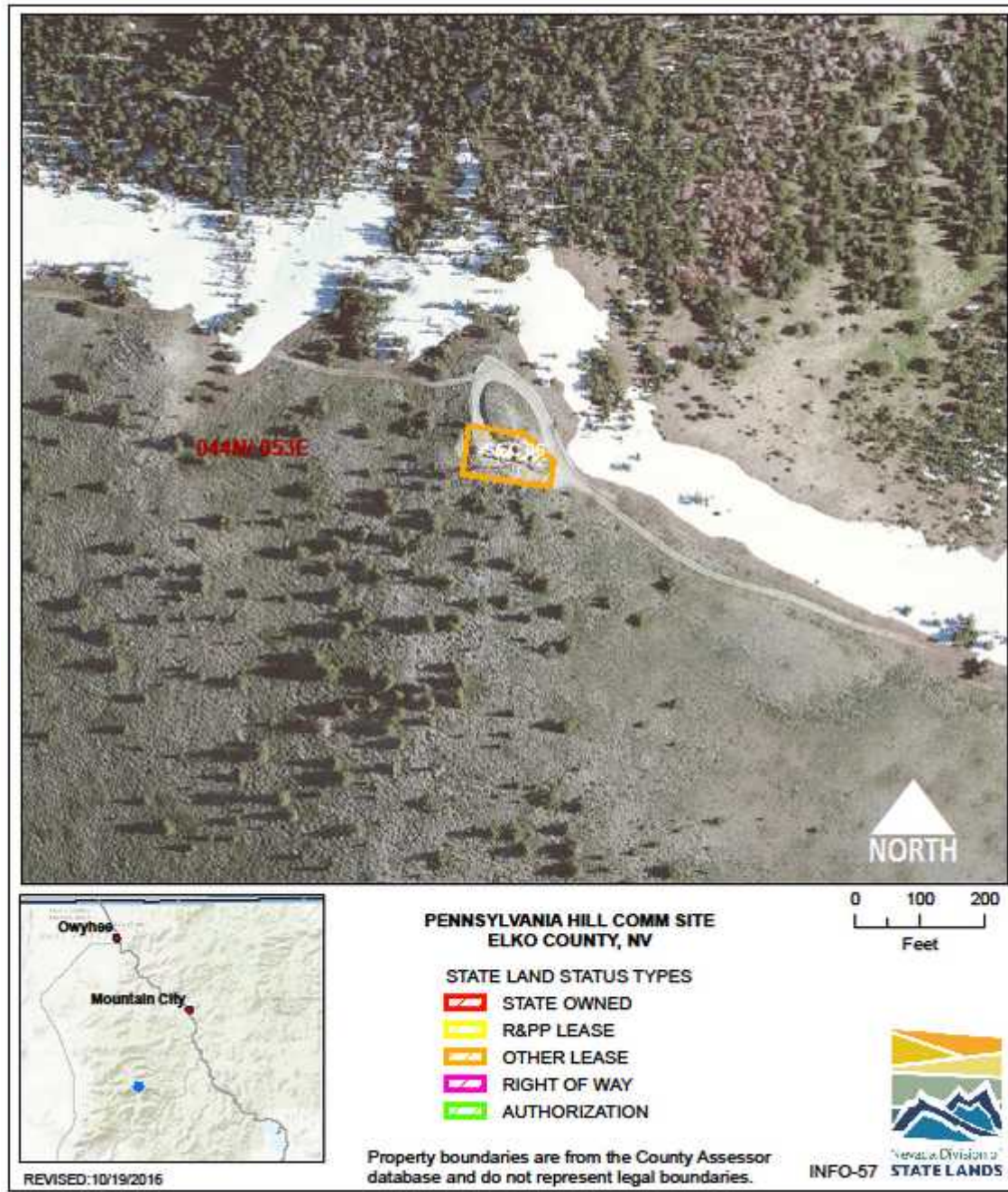
USE/AGENCY: Communications infrastructure/EITS

MEETS AGENCY LAND NEEDS (Y/N/STRATEGIC): Y

PERFORMING ASSET (Y/N/PARTIAL): Y

ISSUES/RESTRICTIONS: Lease expires 12/31/2023.

RECOMMENDATIONS: Retain for agency operations.



INFORMATION TECHNOLOGY: PENNSYLVANIA HILL COMMUNICATION SITE INFO-57

LOCATION: S of Jackpot, Elko County

ACRES: 0.21

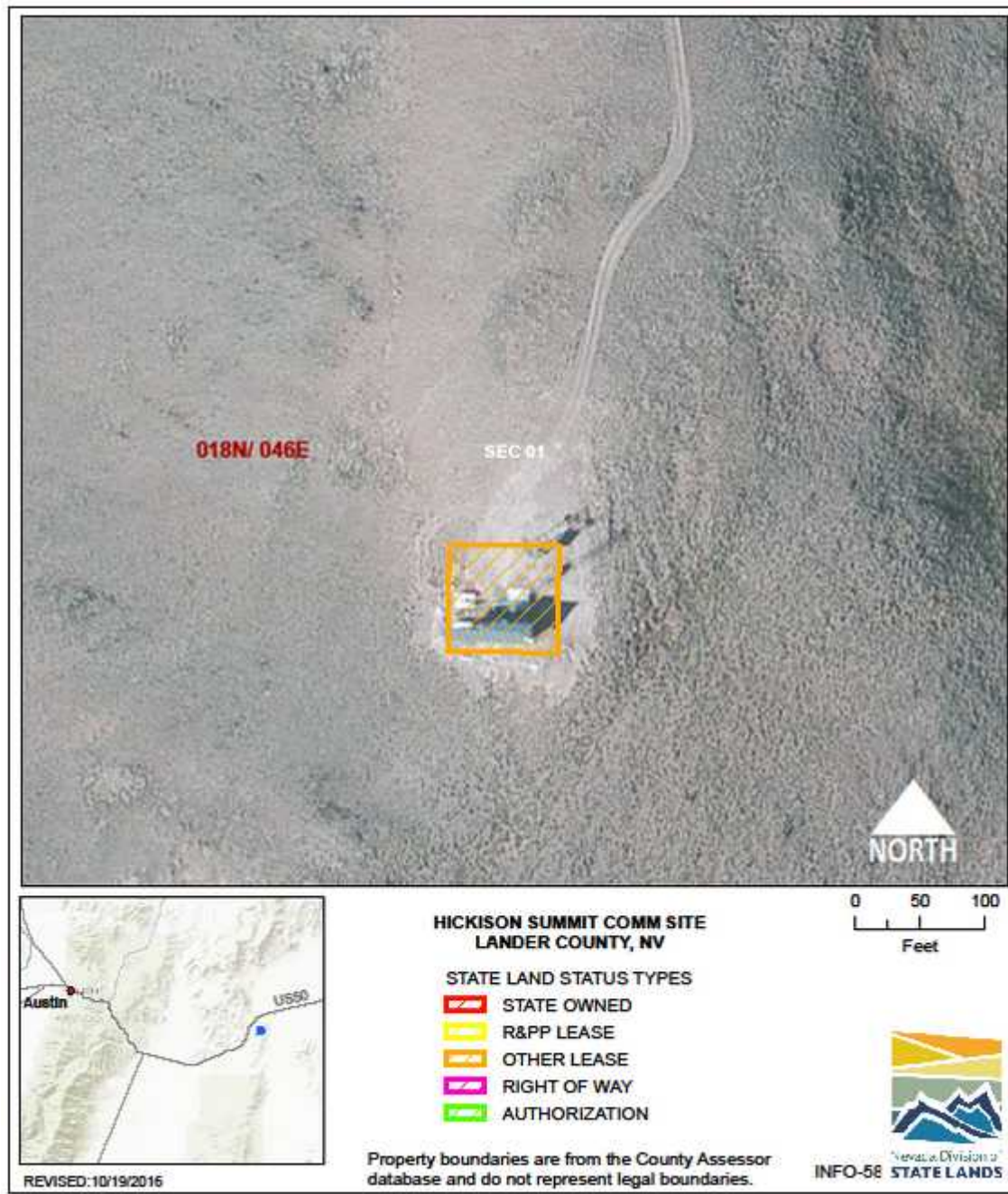
USE/AGENCY: Communications infrastructure/EITS

MEETS AGENCY LAND NEEDS (Y/N/STRATEGIC): Y

PERFORMING ASSET (Y/N/PARTIAL): Y

ISSUES/RESTRICTIONS: Lease expires 12/31/2038.

RECOMMENDATIONS: Retain for agency operations.



INFORMATION TECHNOLOGY: HICKISON SUMMIT COMMUNICATION SITE INFO-58

LOCATION: E of Austin, Lander County

ACRES: 0.16

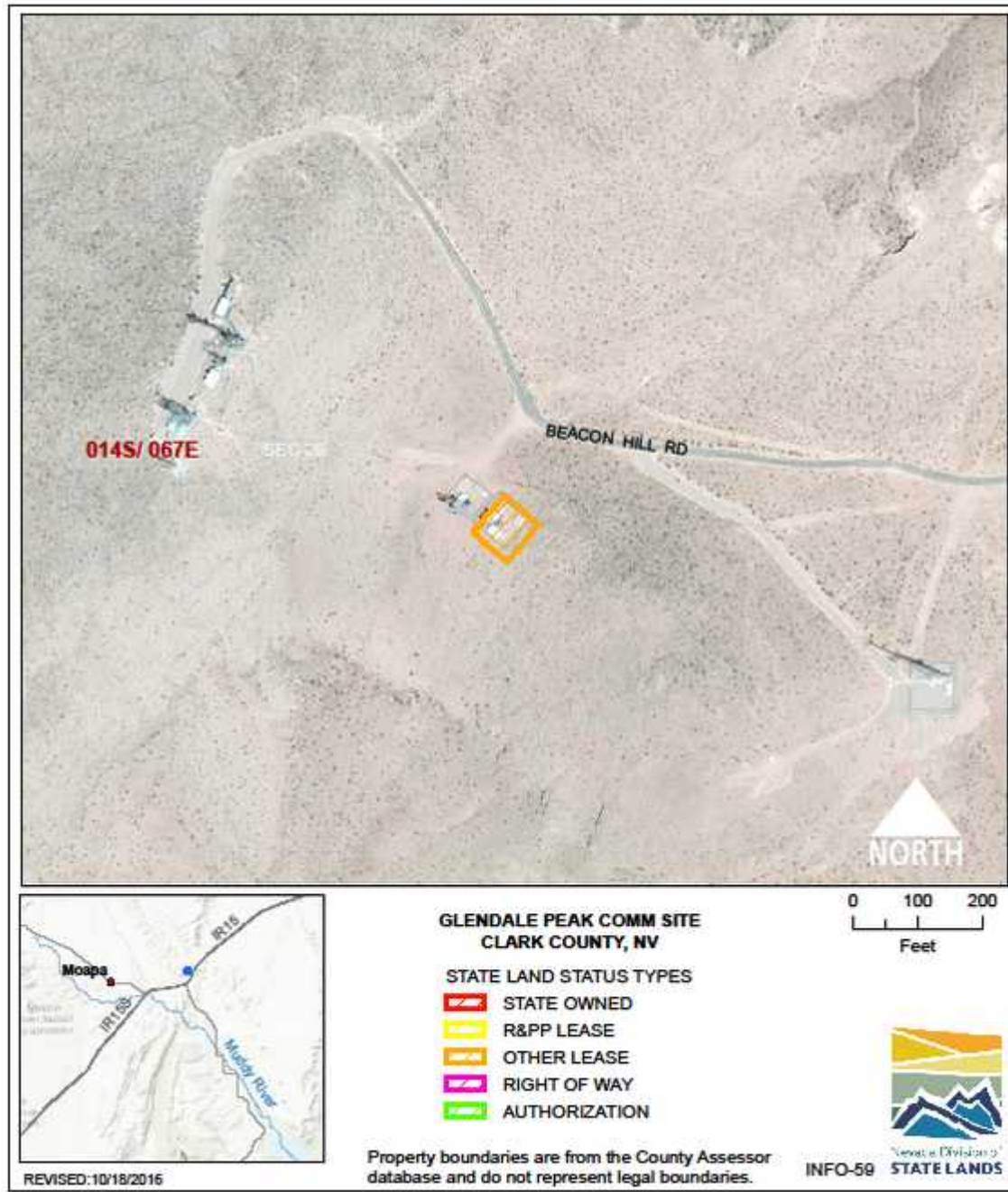
USE/AGENCY: Communications infrastructure/EITS

MEETS AGENCY LAND NEEDS (Y/N/STRATEGIC): Y

PERFORMING ASSET (Y/N/PARTIAL): Y

ISSUES/RESTRICTIONS: Lease expires 1/9/2025.

RECOMMENDATIONS: Retain for agency operations.



INFORMATION TECHNOLOGY: GLENDAL COMMUNICATION SITE INFO-59

LOCATION: E of Moapa, Clark County

ACRES: 0.12

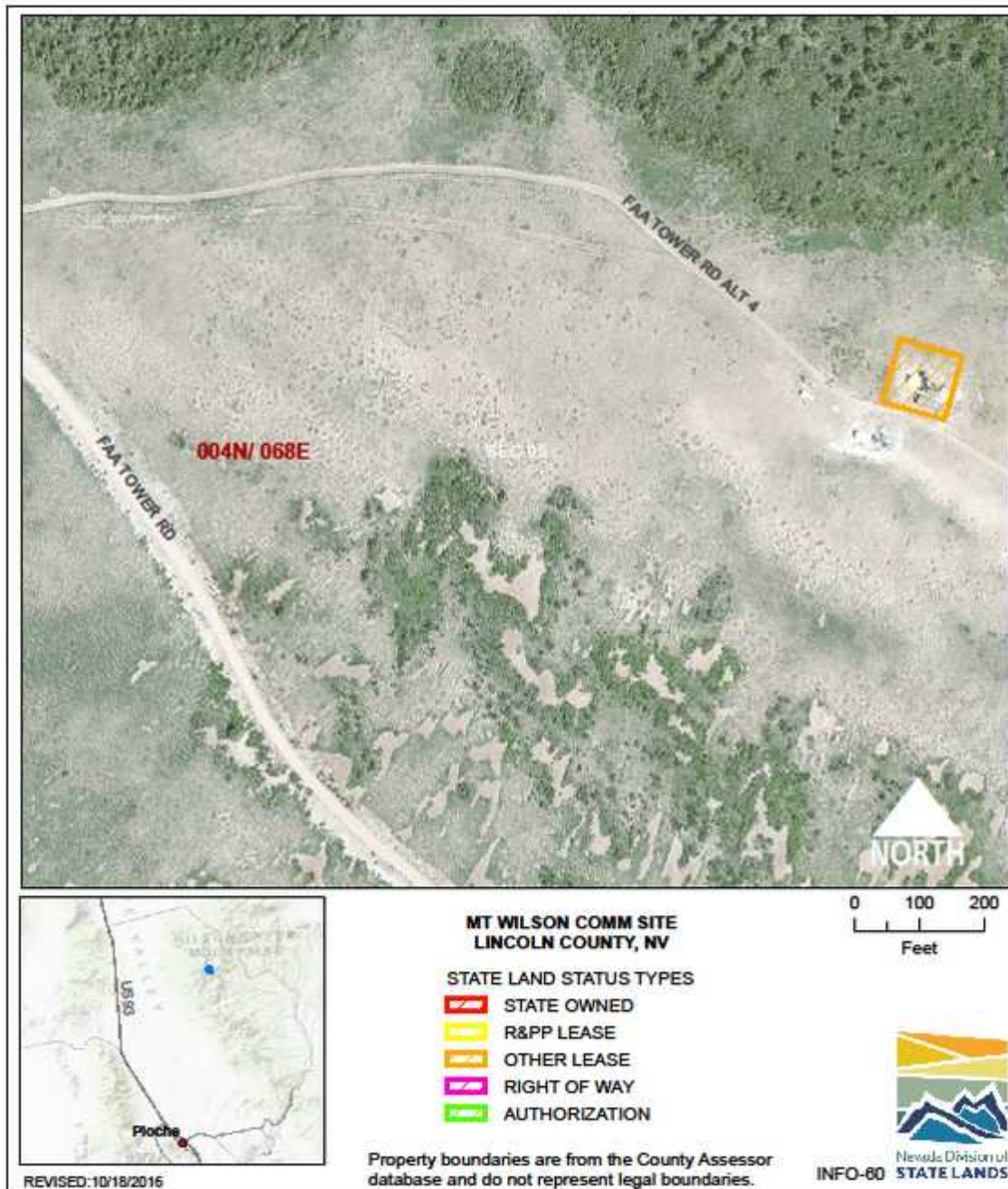
USE/AGENCY: Communications infrastructure/EITS

MEETS AGENCY LAND NEEDS (Y/N/STRATEGIC): Y

PERFORMING ASSET (Y/N/PARTIAL): Y

ISSUES/RESTRICTIONS: Lease expires 10/21/2023.

RECOMMENDATIONS: Retain for agency operations.



INFORMATION TECHNOLOGY: MT WILSON COMMUNICATION SITE INFO-60

LOCATION: E of Pioche, Lincoln County

ACRES: 0.23

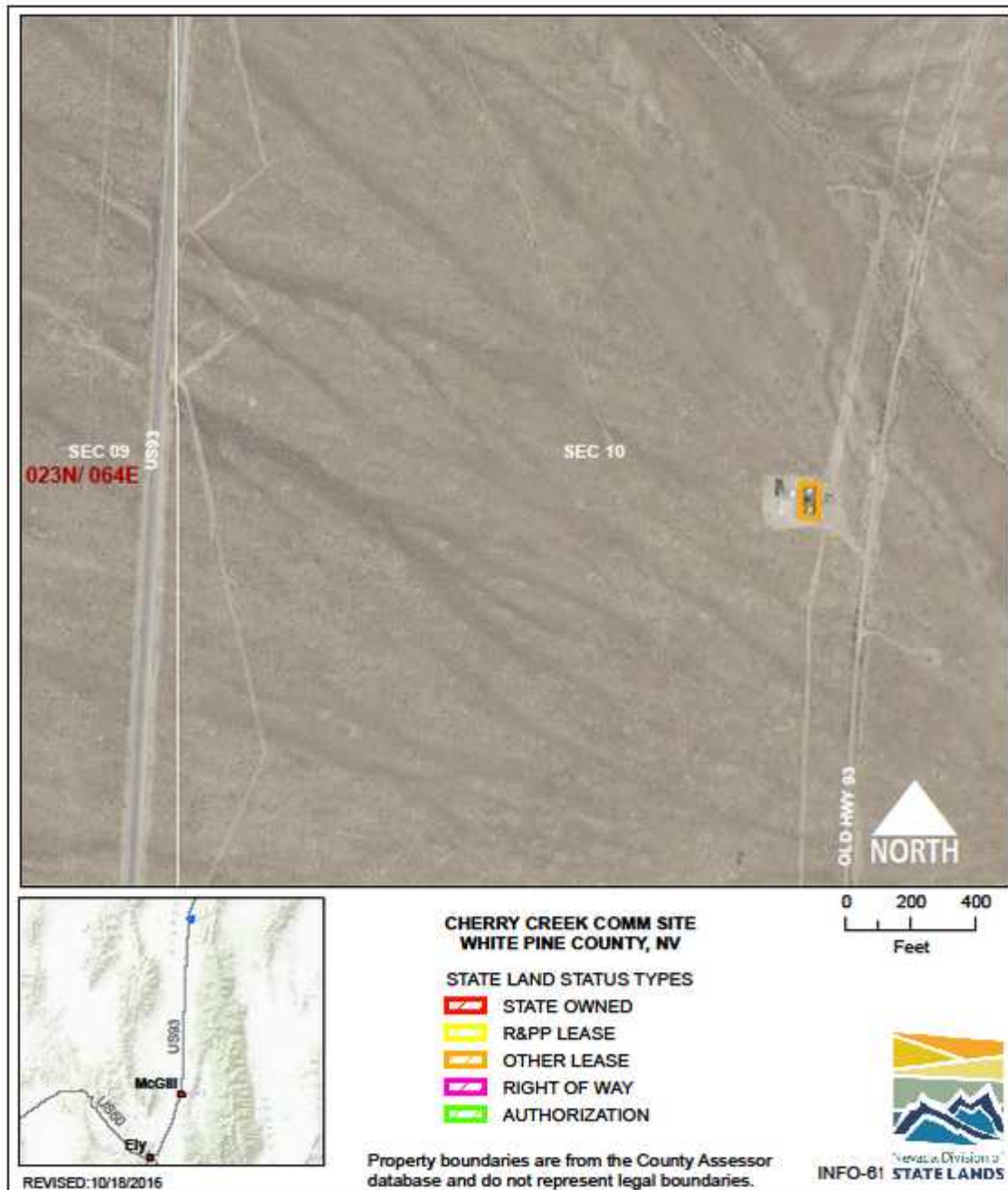
USE/AGENCY: Communications infrastructure/EITS

MEETS AGENCY LAND NEEDS (Y/N/STRATEGIC): Y

PERFORMING ASSET (Y/N/PARTIAL): Y

ISSUES/RESTRICTIONS: Lease expires 12/31/2013.

RECOMMENDATIONS: Retain for agency operations.



INFORMATION TECHNOLOGY: CHERRY CREEK COMMUNICATION SITE INFO-61

LOCATION: N of McGill, White Pine County

ACRES: 0.13

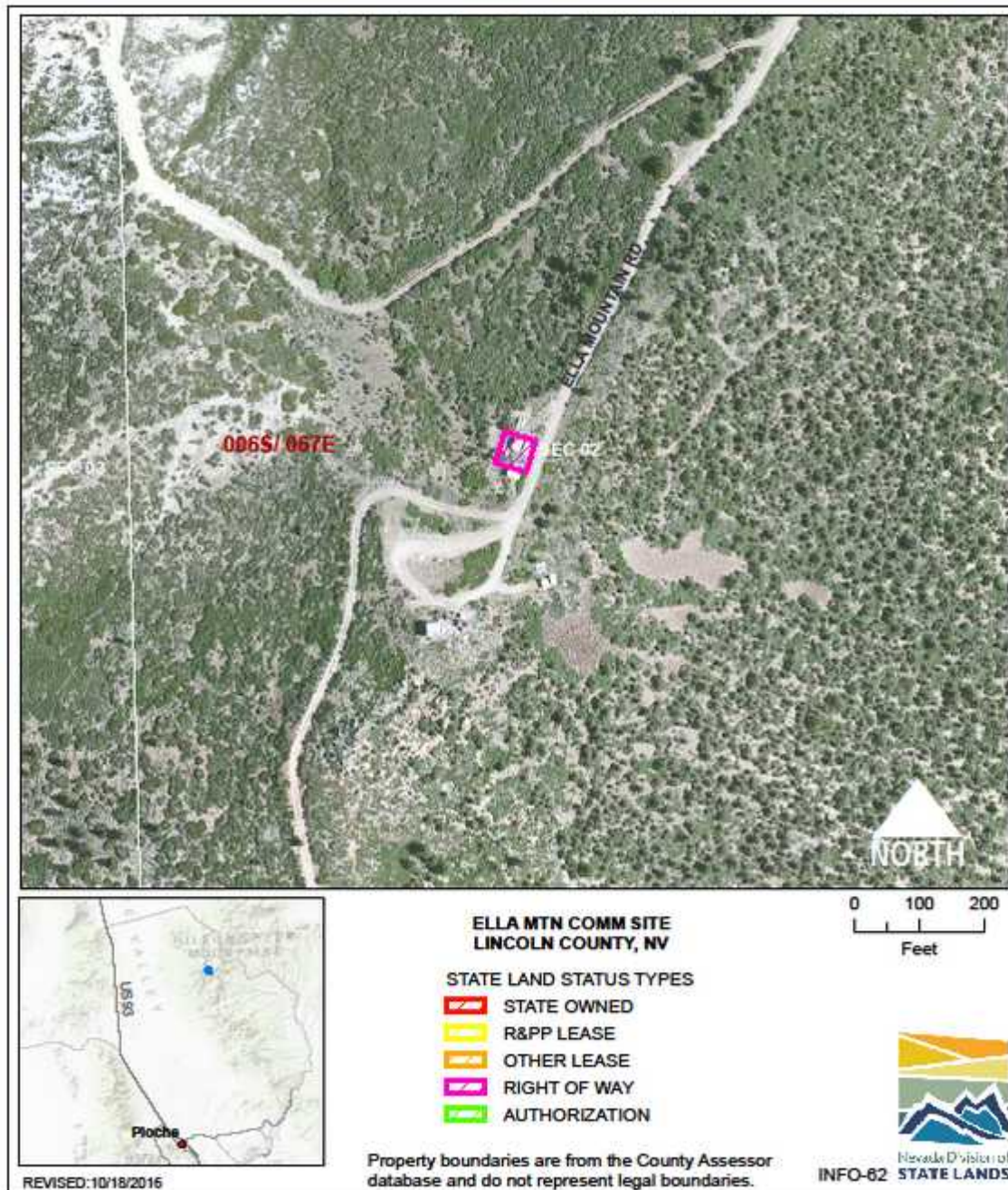
USE/AGENCY: Communications infrastructure/EITS

MEETS AGENCY LAND NEEDS (Y/N/STRATEGIC): Y

PERFORMING ASSET (Y/N/PARTIAL): Y

ISSUES/RESTRICTIONS: Lease expires 10/8/2014.

RECOMMENDATIONS: Retain for agency operations.



INFORMATION TECHNOLOGY: Ella Mountain COMMUNICATION SITE INFO-62

LOCATION: Caliente, Lincoln County

ACRES: 0.06

USE/AGENCY: Communications infrastructure/EITS

MEETS AGENCY LAND NEEDS (Y/N/STRATEGIC): Y

PERFORMING ASSET (Y/N/PARTIAL): Y

ISSUES/RESTRICTIONS: Lease expires 12/31/2013.

RECOMMENDATIONS: Retain for agency operations.