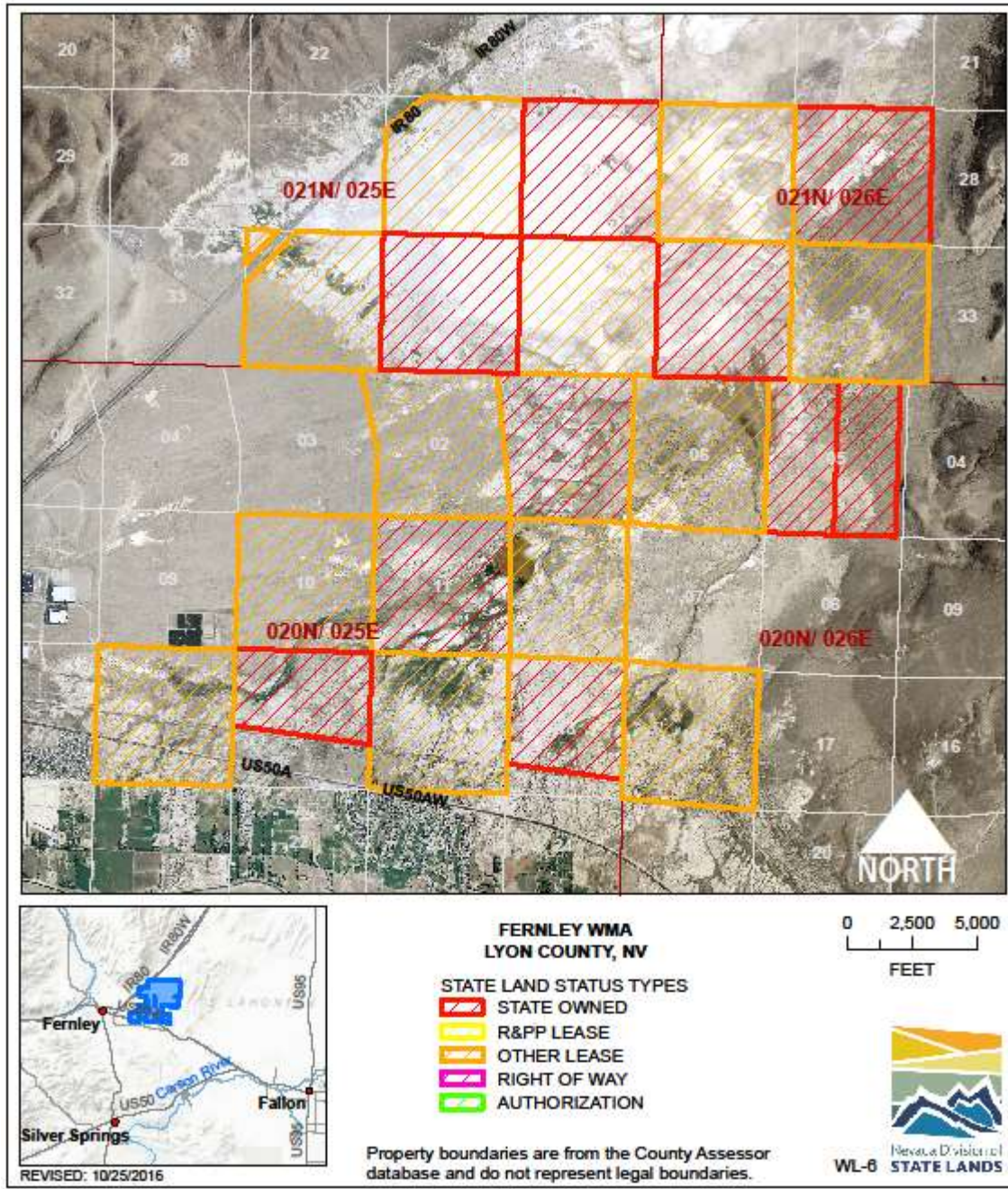


WILDLIFE: STILLWATER WMA WL-5
LOCATION: Churchill County
ACRES: 5,909.79
USE/AGENCY: NDOW
MEETS AGENCY LAND NEEDS (Y/N/STRATEGIC): Y
PERFORMING ASSET (Y/N/PARTIAL): Y
ISSUES/RESTRICTIONS: Lease expires 10/1/2046.
RECOMMENDATIONS: Retain for agency operations.



WILDLIFE: FERNLEY WMA WL-6

LOCATION: Lyon County

ACRES: 12,943.24

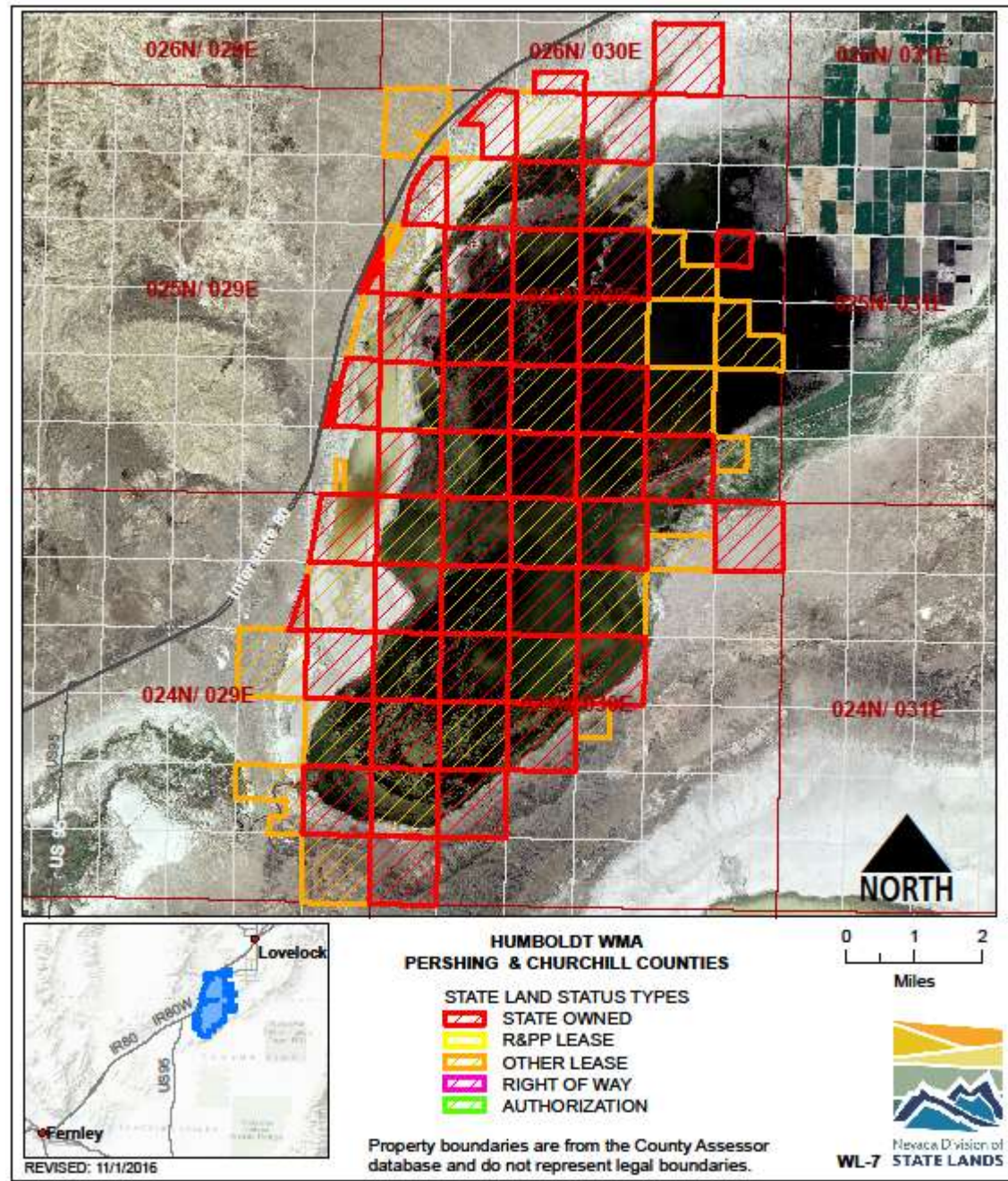
USE/AGENCY: NDOW

MEETS AGENCY LAND NEEDS (Y/N/STRATEGIC): Y

PERFORMING ASSET (Y/N/PARTIAL): Y

ISSUES/RESTRICTIONS: Management agreement with Bureau of Reclamation expires 3/3/2033.

RECOMMENDATIONS: Retain for agency operations.



WILDLIFE: HUMBOLDT/TOULON WMA WL-7

LOCATION: Pershing County

ACRES: 35,879.44

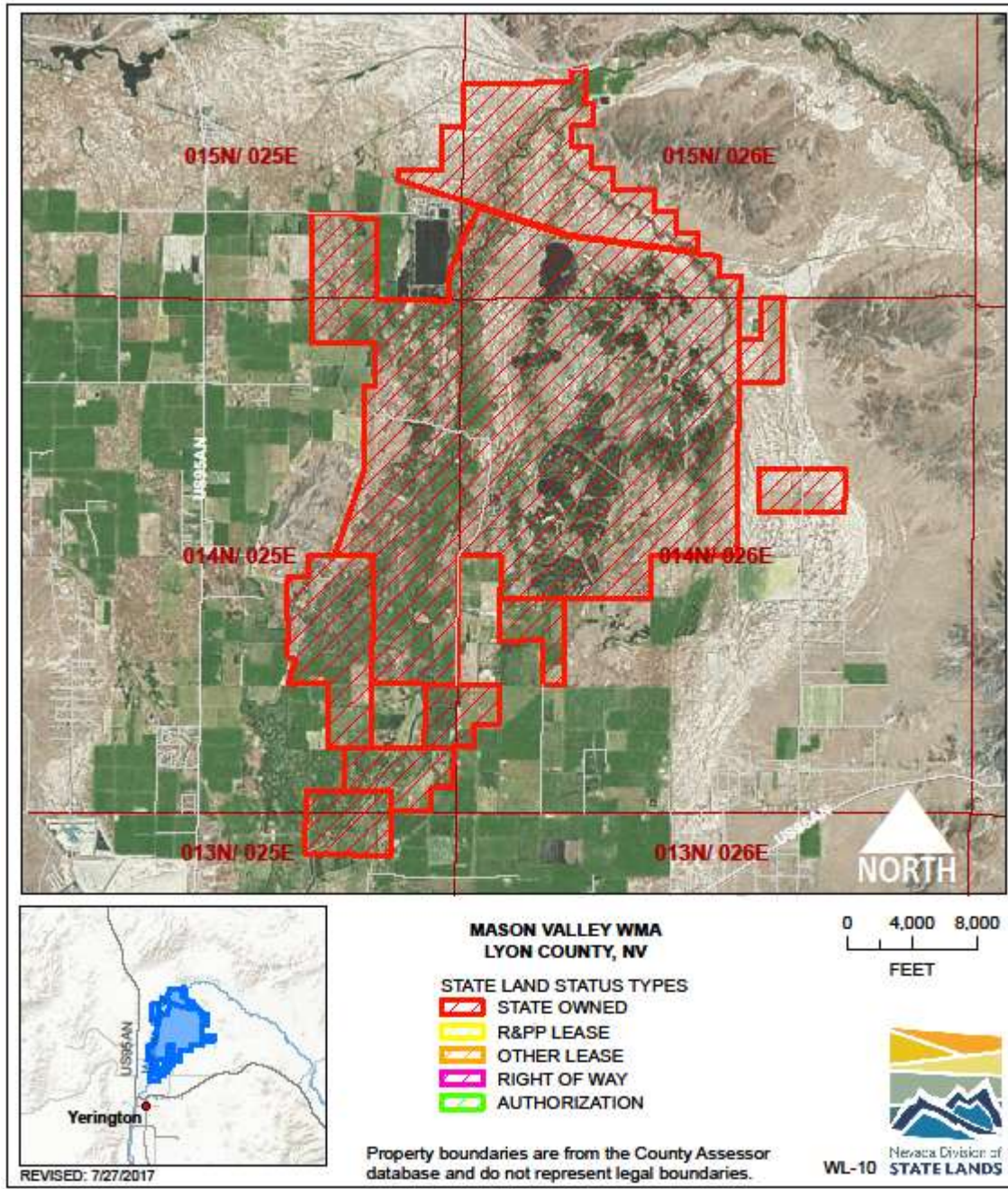
USE/AGENCY: NDOW

MEETS AGENCY LAND NEEDS (Y/N/STRATEGIC): Y

PERFORMING ASSET (Y/N/PARTIAL): Y

ISSUES/RESTRICTIONS: Bureau of Reclamation MOA expires 9/17/2038.

RECOMMENDATIONS: Retain for agency operations.



WILDLIFE: MASON VALLEY WMA WL-10

LOCATION: Lux Lane, Lyon County

ACRES: 17,581.82

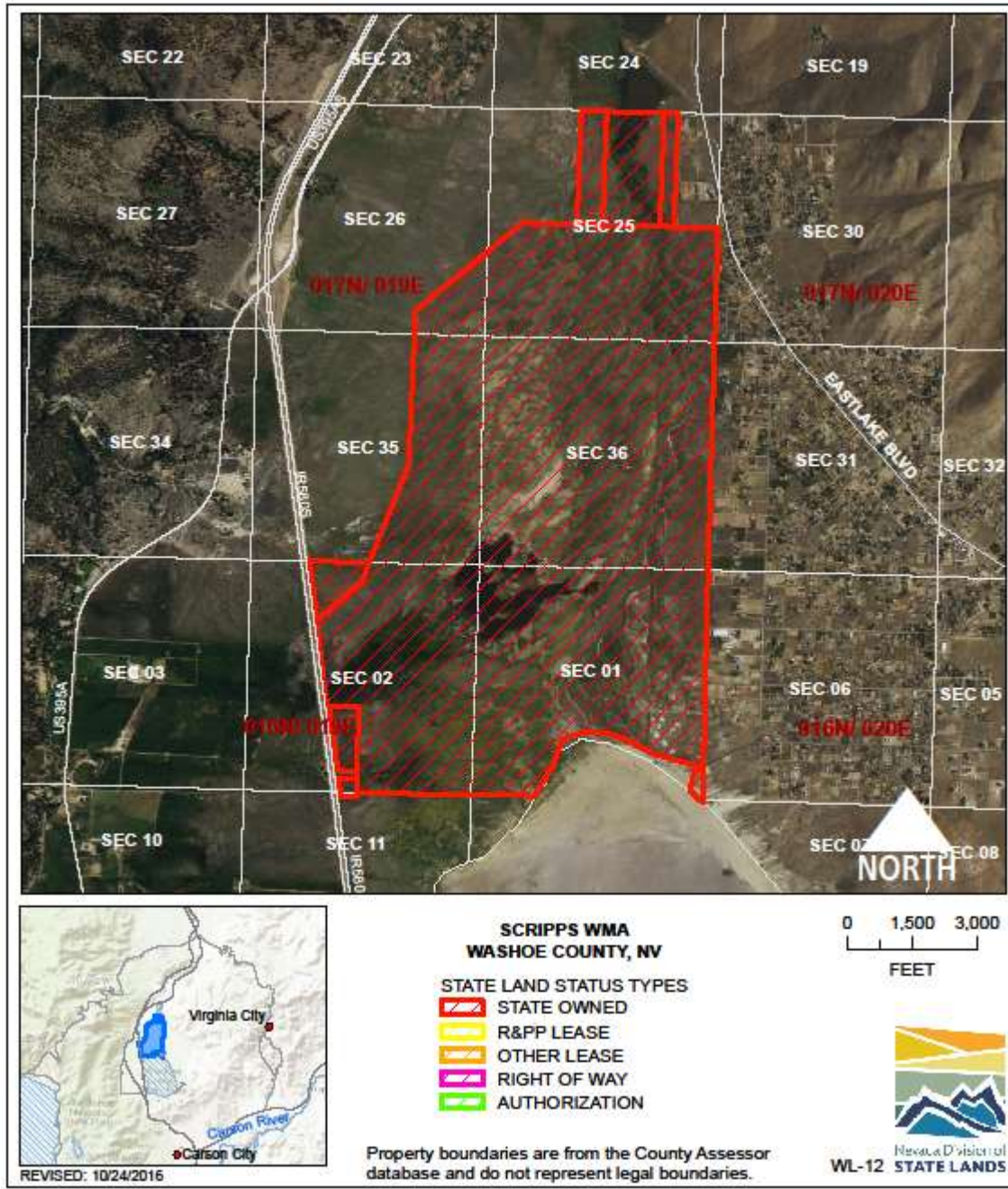
USE/AGENCY: NDOW

MEETS AGENCY LAND NEEDS (Y/N/STRATEGIC): Y

PERFORMING ASSET (Y/N/PARTIAL): Y

ISSUES/RESTRICTIONS: NV Energy water agreement for Ft. Churchill Pond.

RECOMMENDATIONS: Retain for agency operations.



WILDLIFE: SCRIPPS WMA WL-12

LOCATION: Washoe Valley, Washoe County

ACRES: 2,347.76

USE/AGENCY: NDOW

MEETS AGENCY LAND NEEDS (Y/N/STRATEGIC): Y

PERFORMING ASSET (Y/N/PARTIAL): Y

ISSUES/RESTRICTIONS: Agreement with State Parks for Old Washoe Estates access to Little Washoe Lake.

RECOMMENDATIONS: Retain for agency operations.



WILDLIFE: RENO WESTERN REGION WL-14

LOCATION: Reno, Washoe County

ACRES: 2.66

USE/AGENCY: NDOW

MEETS AGENCY LAND NEEDS (Y/N/STRATEGIC): Y

PERFORMING ASSET (Y/N/PARTIAL): Y

ISSUES/RESTRICTIONS: UNR lease expires 6/1/2017.

RECOMMENDATIONS: Retain for agency operations.



WILDLIFE: LAS VEGAS OFFICE WL-15

LOCATION: Clark County

ACRES: 1.70

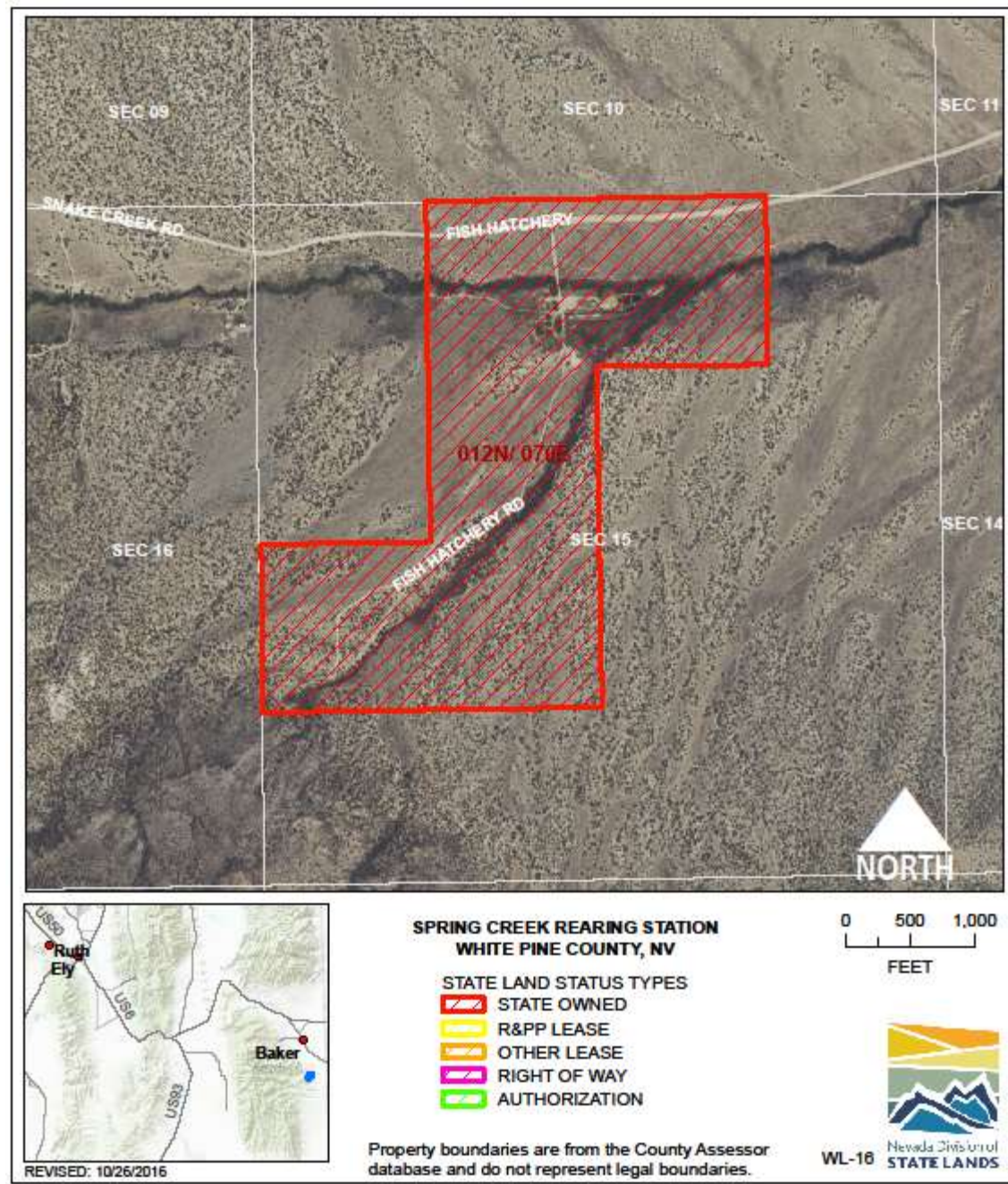
USE/AGENCY: NDOW

MEETS AGENCY LAND NEEDS (Y/N/STRATEGIC): Y

PERFORMING ASSET (Y/N/PARTIAL): Y

ISSUES/RESTRICTIONS: Shared site with Nevada Division of Forestry and Nevada Division of State Parks.

RECOMMENDATIONS: Retain for agency operations.



WILDLIFE: SPRING CREEK REARING STATION WL-16

LOCATION: Baker, White Pine County

ACRES: 198.23

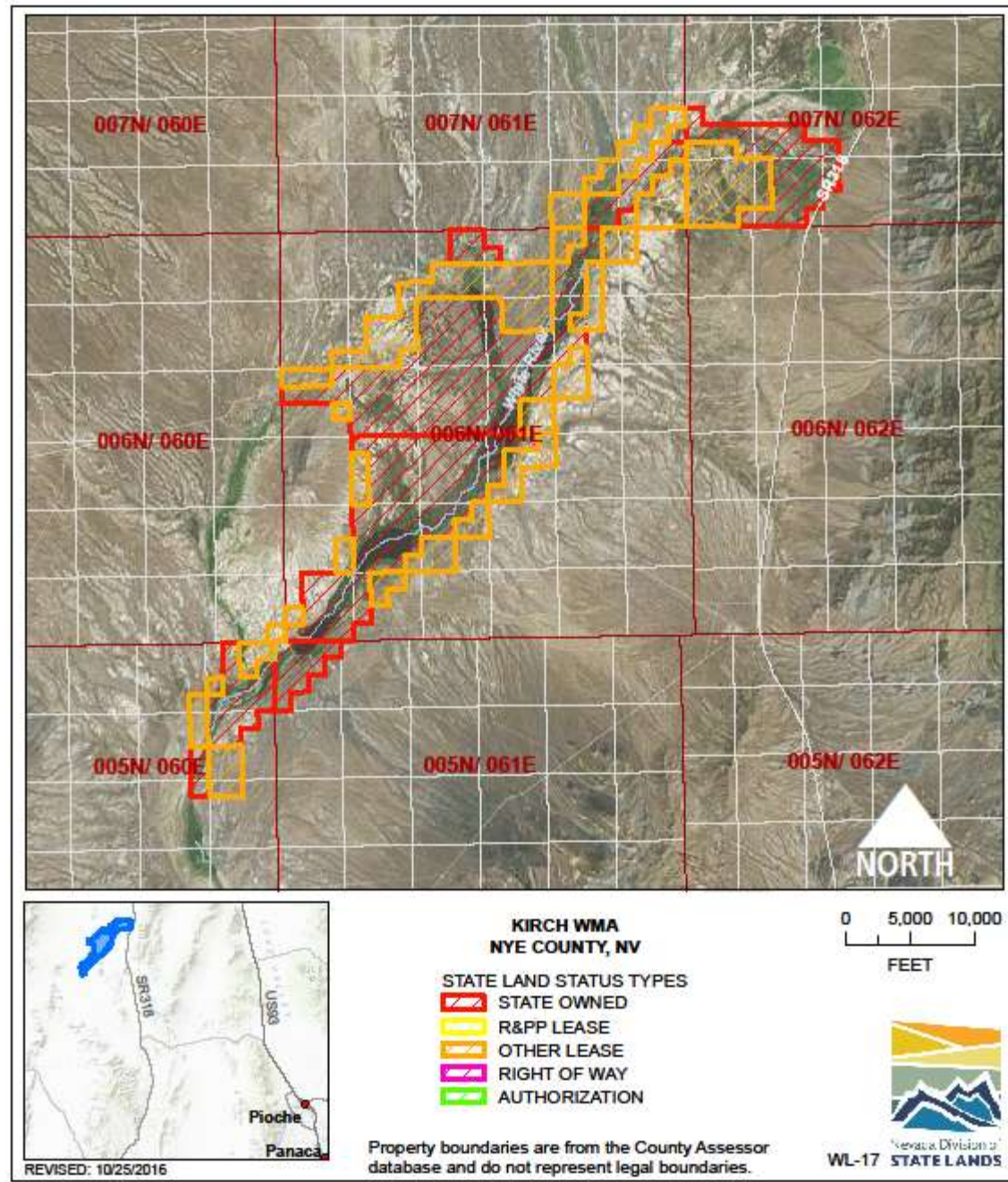
USE/AGENCY: NDOW

MEETS AGENCY LAND NEEDS (Y/N/STRATEGIC): Y

PERFORMING ASSET (Y/N/PARTIAL): Y

ISSUES/RESTRICTIONS:

RECOMMENDATIONS: Retain for agency operations.



WILDLIFE: WAYNE KIRCH WMA WL-17

LOCATION: Sunnyside, Nye County

ACRES: 14,907.77

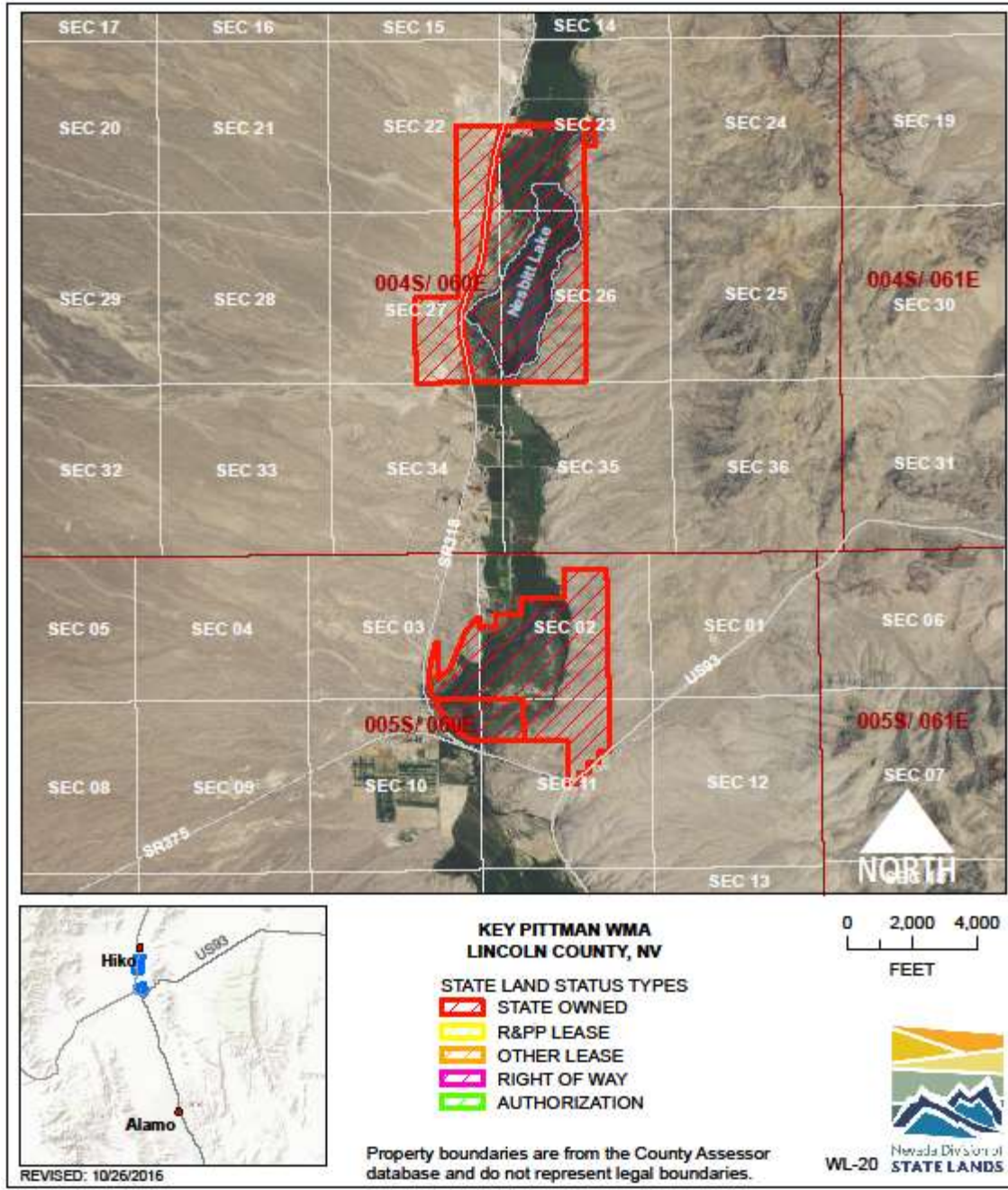
USE/AGENCY: NDOW

MEETS AGENCY LAND NEEDS (Y/N/STRATEGIC): Y

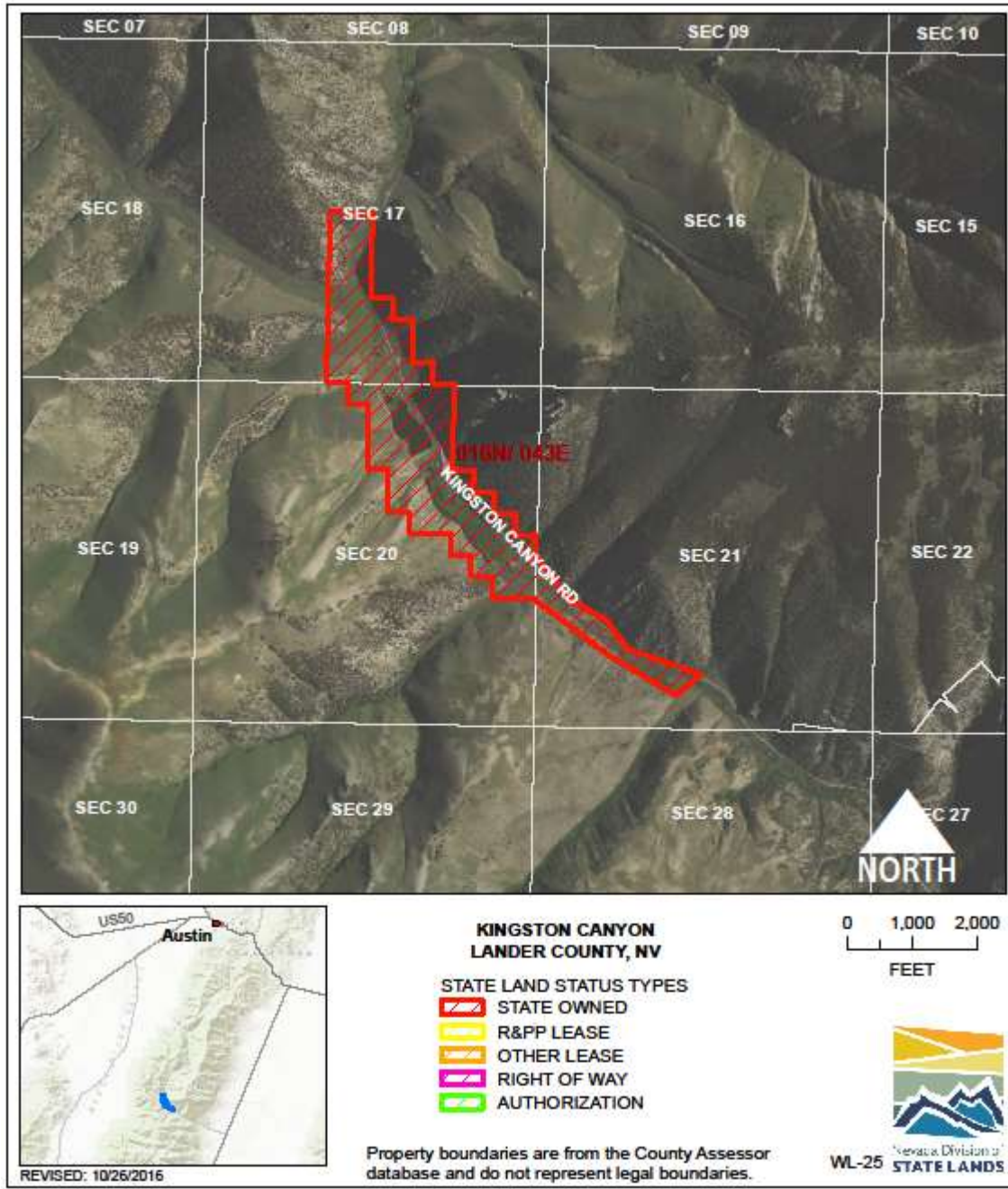
PERFORMING ASSET (Y/N/PARTIAL): Y

ISSUES/RESTRICTIONS:

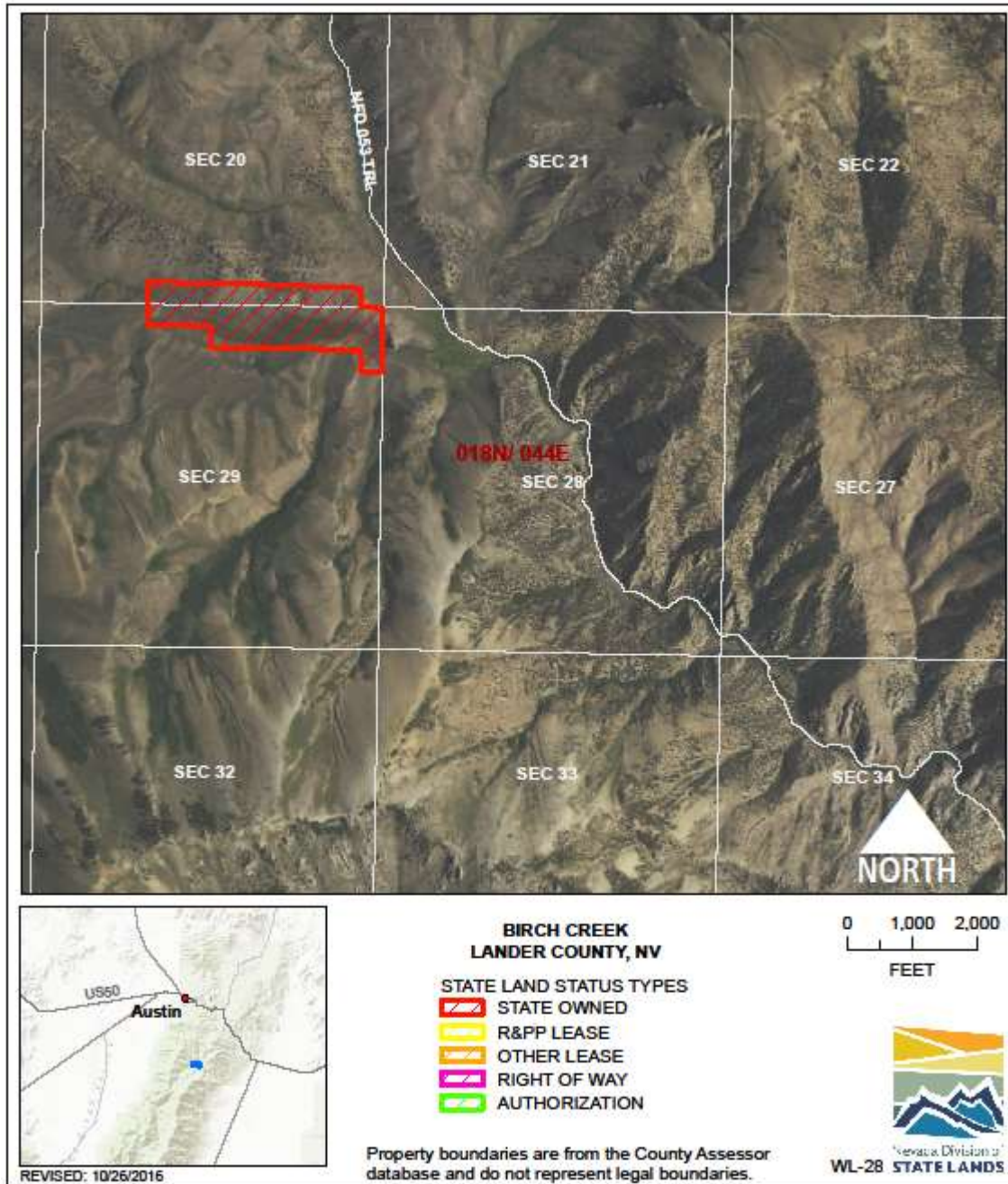
RECOMMENDATIONS: Retain for agency operations.



WILDLIFE: KEY PITTMAN WMA WL-20
LOCATION: Hiko, Lincoln County
ACRES: 1,299.03
USE/AGENCY: NDOW
MEETS AGENCY LAND NEEDS (Y/N/STRATEGIC): Y
PERFORMING ASSET (Y/N/PARTIAL): Y
ISSUES/RESTRICTIONS: R&PP patent.
RECOMMENDATIONS: Retain for agency operations.



WILDLIFE: KINGSTON CANYON WL-25
LOCATION: Kingston, Lander County
ACRES: 182.06
USE/AGENCY: NDOW
MEETS AGENCY LAND NEEDS (Y/N/STRATEGIC): Y
PERFORMING ASSET (Y/N/PARTIAL): Y
ISSUES/RESTRICTIONS:
RECOMMENDATIONS: Retain for agency operations.



WILDLIFE: BIRCH CREEK WL-28

LOCATION: Lander County

ACRES: 74.14

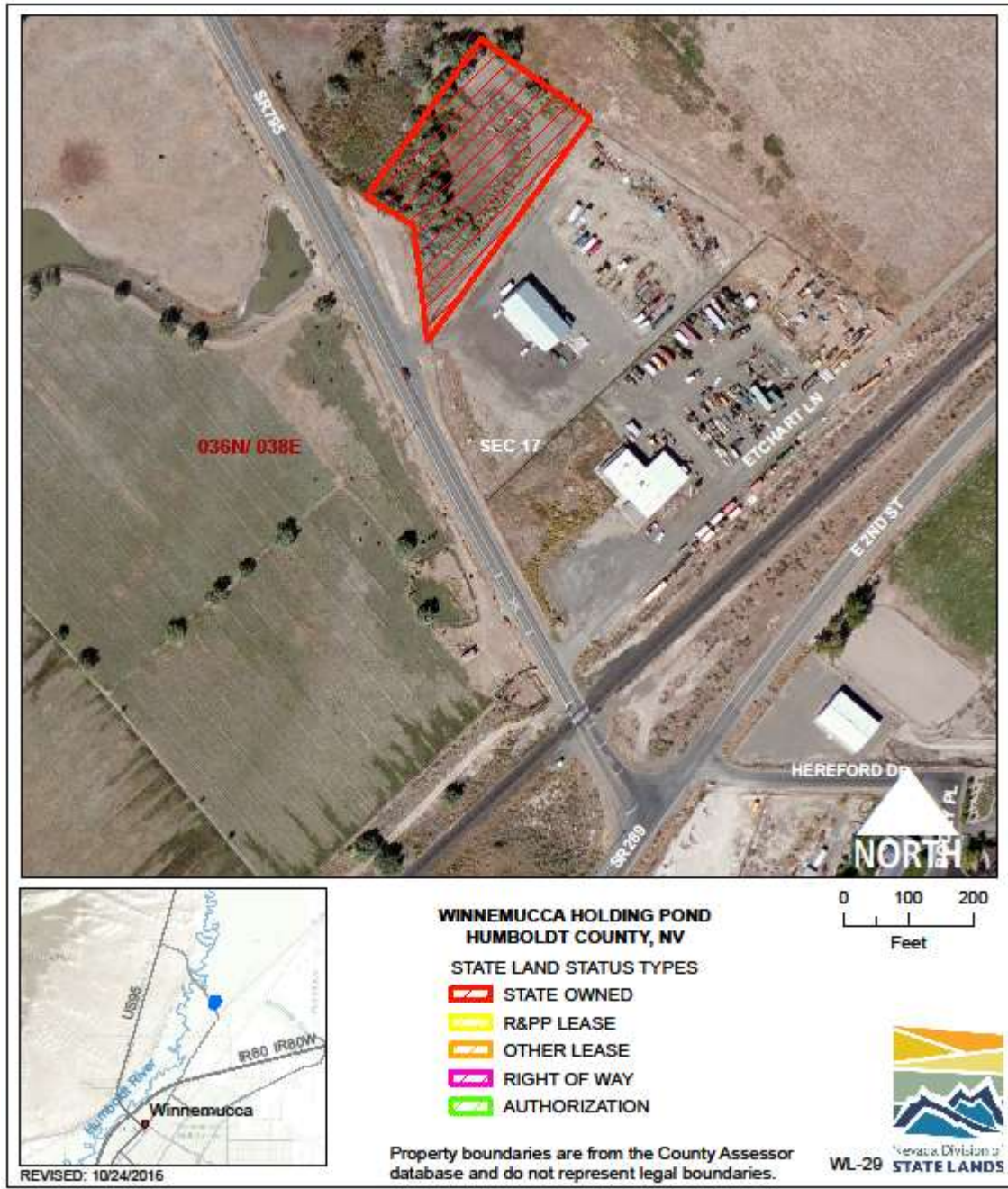
USE/AGENCY: NDOW

MEETS AGENCY LAND NEEDS (Y/N/STRATEGIC): Y

PERFORMING ASSET (Y/N/PARTIAL): Y

ISSUES/RESTRICTIONS:

RECOMMENDATIONS: Retain for agency operations.



WILDLIFE: WINNEMUCCA HOLDING POND WL-29

LOCATION: Winnemucca, Humboldt County

ACRES: 1.60

USE/AGENCY: NDOW

MEETS AGENCY LAND NEEDS (Y/N/STRATEGIC): Y

PERFORMING ASSET (Y/N/PARTIAL): Y

ISSUES/RESTRICTIONS:

RECOMMENDATIONS: Retain for agency operations.



WILDLIFE: WINNEMUCCA OFFICE WL-30

LOCATION: 815 E. Fourth Street, Winnemucca, Humboldt County

ACRES: 5.46

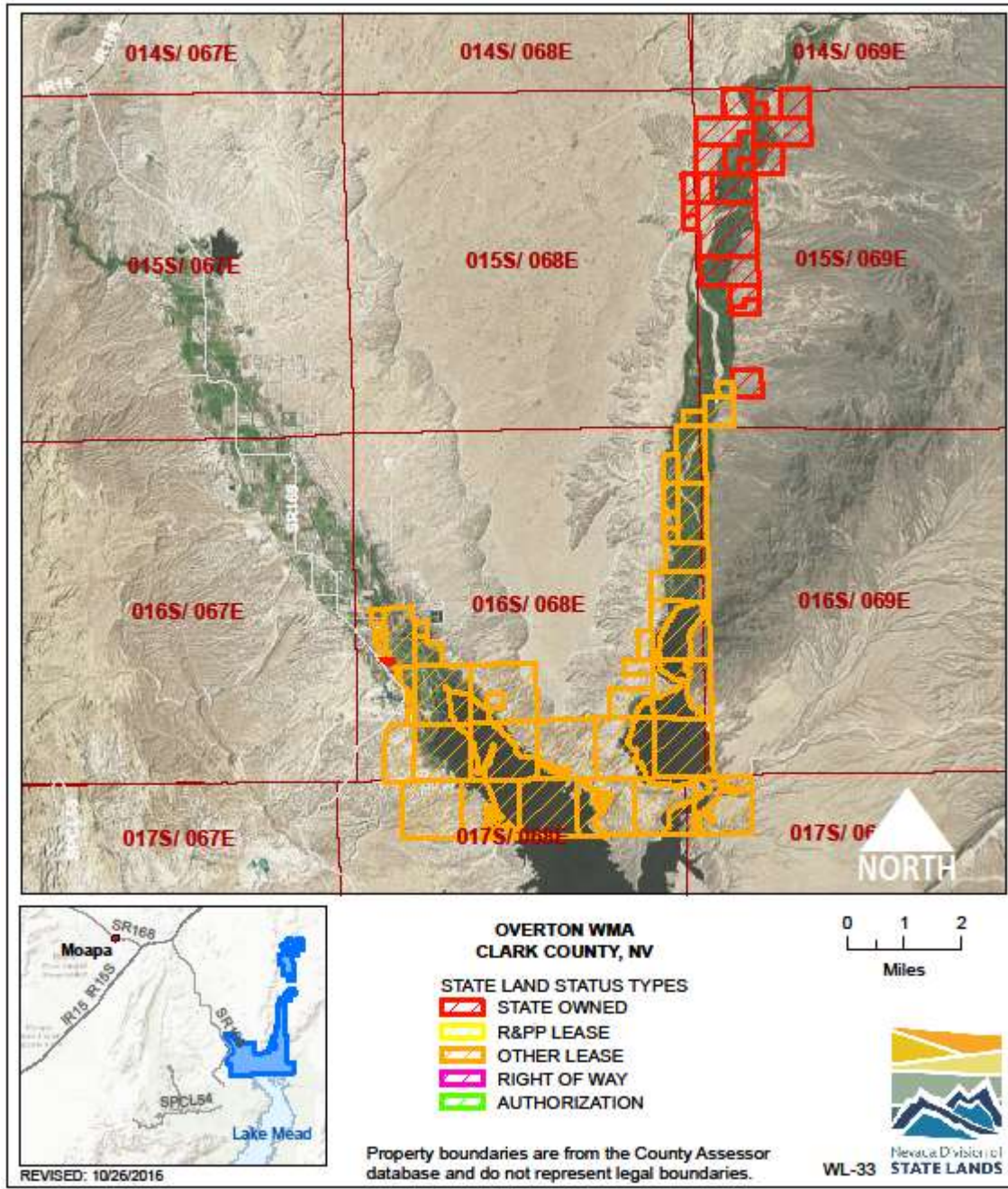
USE/AGENCY: NDOW

MEETS AGENCY LAND NEEDS (Y/N/STRATEGIC): Y

PERFORMING ASSET (Y/N/PARTIAL): Y

ISSUES/RESTRICTIONS:

RECOMMENDATIONS: Retain for agency operations.



WILDLIFE: OVERTON WMA WL-33

LOCATION: Overton, Clark County

ACRES: 16,359.49

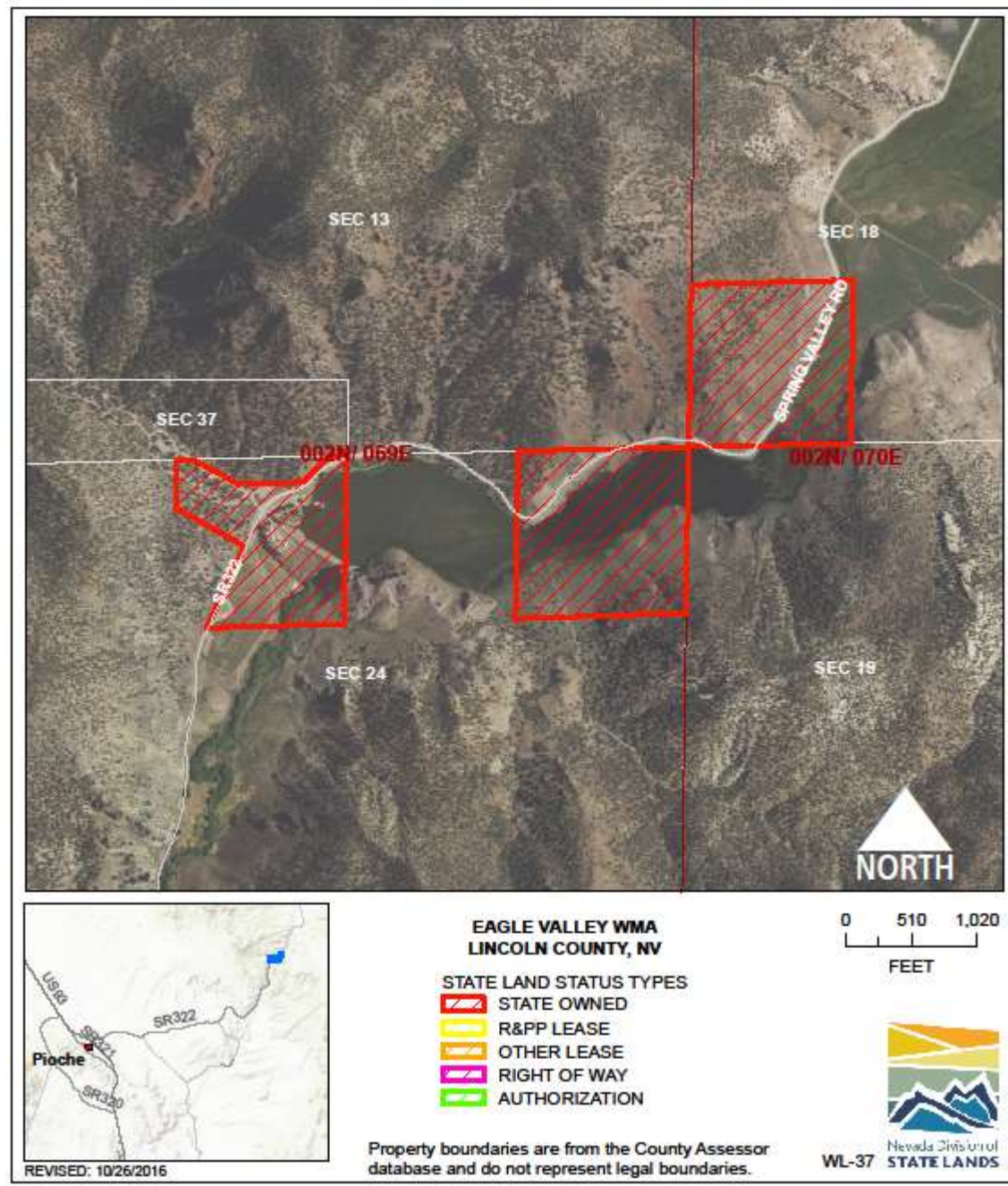
USE/AGENCY: NDOW

MEETS AGENCY LAND NEEDS (Y/N/STRATEGIC): Y

PERFORMING ASSET (Y/N/PARTIAL): Y

ISSUES/RESTRICTIONS: 25-year agreement with National Park Service in process for 14,159 acres. Remainder is State owned.

RECOMMENDATIONS: Retain for agency operations.



WILDLIFE: EAGLE VALLEY DAM WL-37

LOCATION: Spring Valley, Lincoln County

ACRES: 104.68

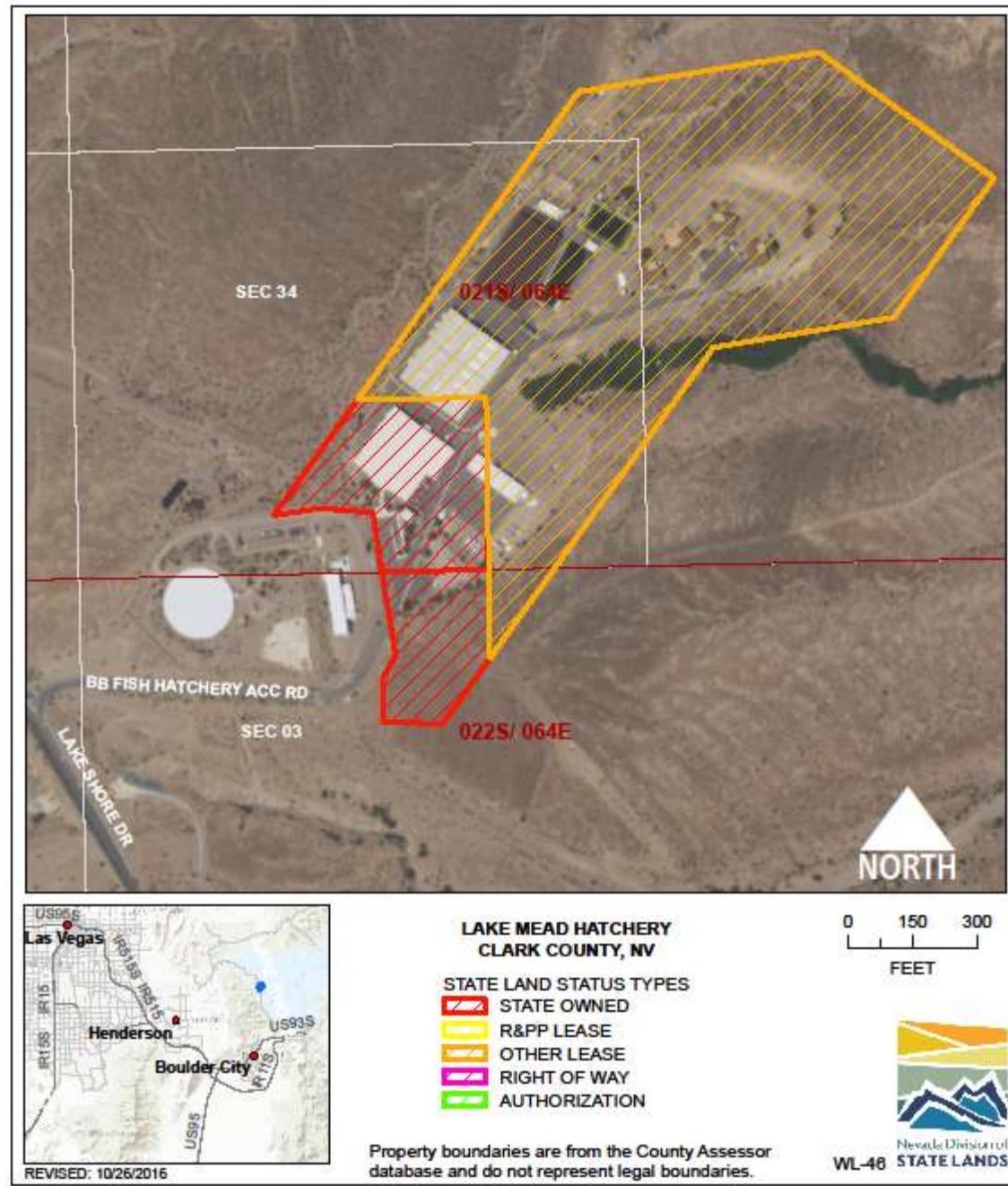
USE/AGENCY: NDOW

MEETS AGENCY LAND NEEDS (Y/N/STRATEGIC): Y

PERFORMING ASSET (Y/N/PARTIAL): Y

ISSUES/RESTRICTIONS: NDOW manages the water, Parks manages recreation.

RECOMMENDATIONS: Retain for agency operations.



WILDLIFE: LAKE MEAD FISH HATCHERY WL-46

LOCATION: Lake Mead, Clark County

ACRES: 24.56

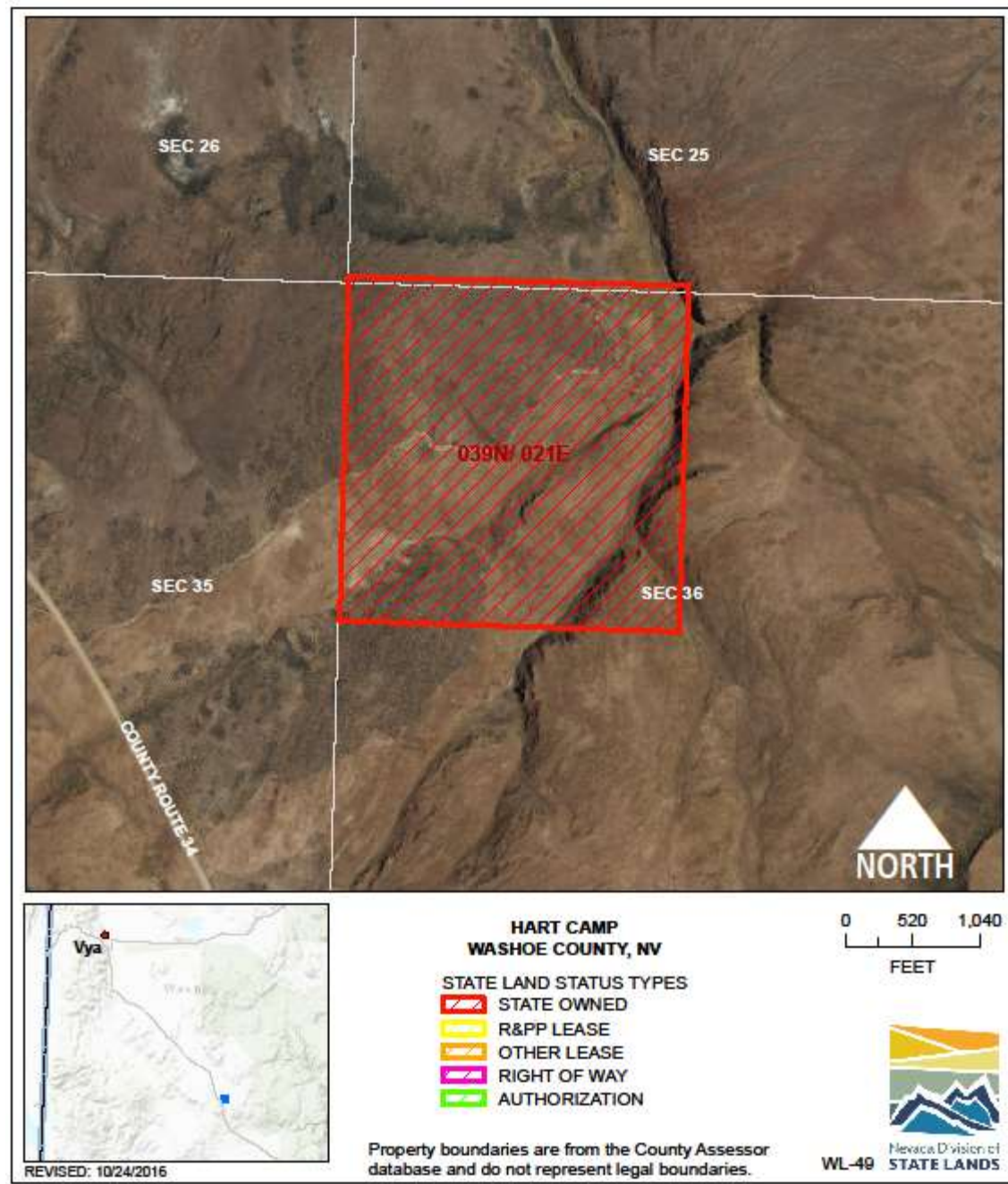
USE/AGENCY: NDOW

MEETS AGENCY LAND NEEDS (Y/N/STRATEGIC): S

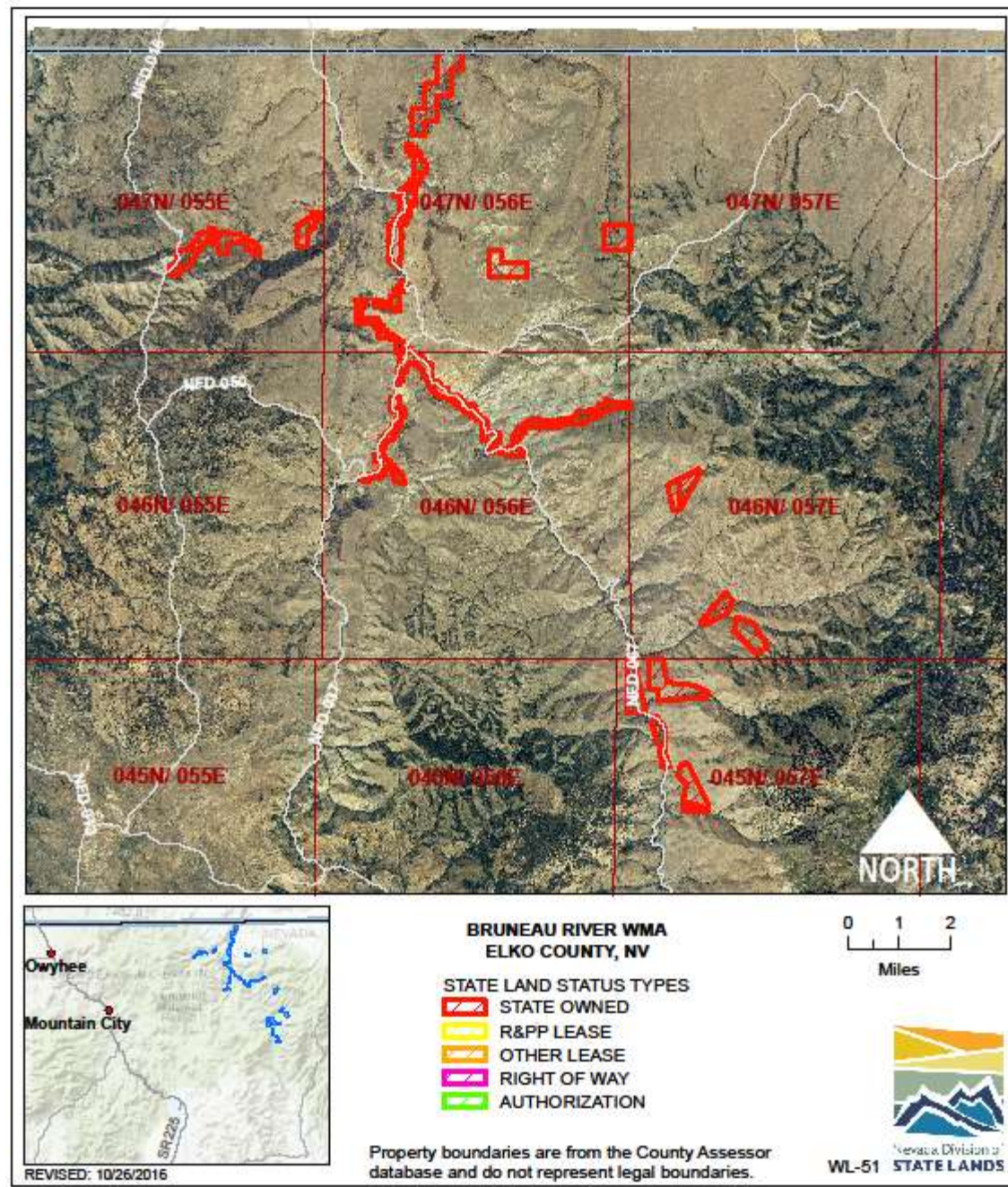
PERFORMING ASSET (Y/N/PARTIAL): Y

ISSUES/RESTRICTIONS: Co-managed with National Park Service.

RECOMMENDATIONS: Retain for agency operations.



WILDLIFE: HART CAMP WL-49
LOCATION: Vya, Washoe County
ACRES: 162.40
USE/AGENCY: NDOW
MEETS AGENCY LAND NEEDS (Y/N/STRATEGIC): Y
PERFORMING ASSET (Y/N/PARTIAL): P
ISSUES/RESTRICTIONS:
RECOMMENDATIONS: Retain for agency operations.



WILDLIFE: BRUNEAU RIVER WMA WL-51

LOCATION: Elko County

ACRES: 3,501.60

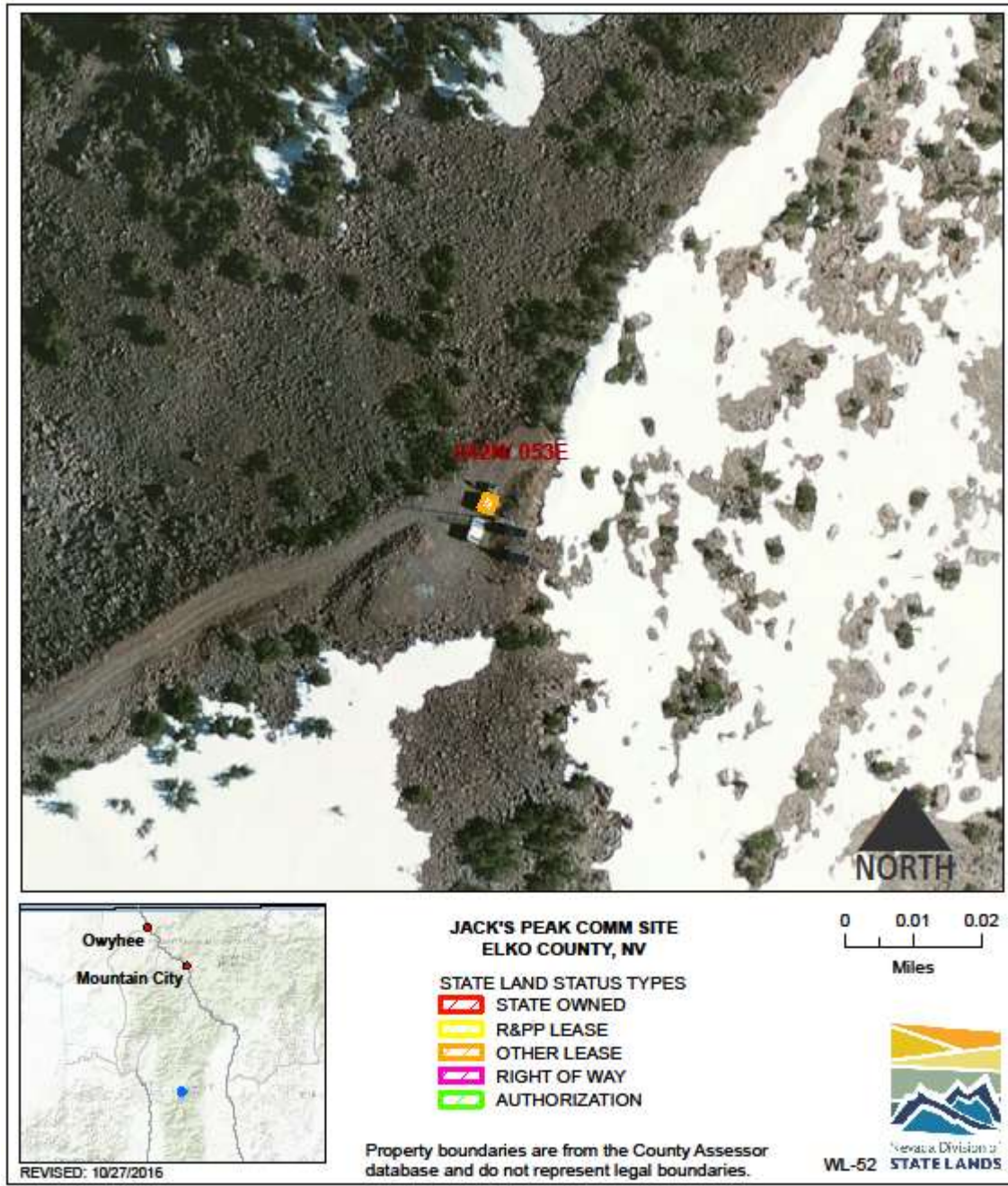
USE/AGENCY: NDOW

MEETS AGENCY LAND NEEDS (Y/N/STRATEGIC): Y

PERFORMING ASSET (Y/N/PARTIAL): Y

ISSUES/RESTRICTIONS: Primary focus is elk propagation.

RECOMMENDATIONS: Retain for agency operations.



WILDLIFE: JACKS PEAK COMM SITE WL-52

LOCATION: Elko County

ACRES: 0.01

USE/AGENCY: NDOW

MEETS AGENCY LAND NEEDS (Y/N/STRATEGIC): Y

PERFORMING ASSET (Y/N/PARTIAL): Y

ISSUES/RESTRICTIONS: Co-location agreement with US Forest Service pending.

RECOMMENDATIONS: Retain for agency operations.



WILDLIFE: FISHERMAN'S PARK AND LAUGHLIN OFFICE WL-54

LOCATION: Laughlin, Clark County

ACRES: 66.76

USE/AGENCY: NDOW

MEETS AGENCY LAND NEEDS (Y/N/STRATEGIC): Y

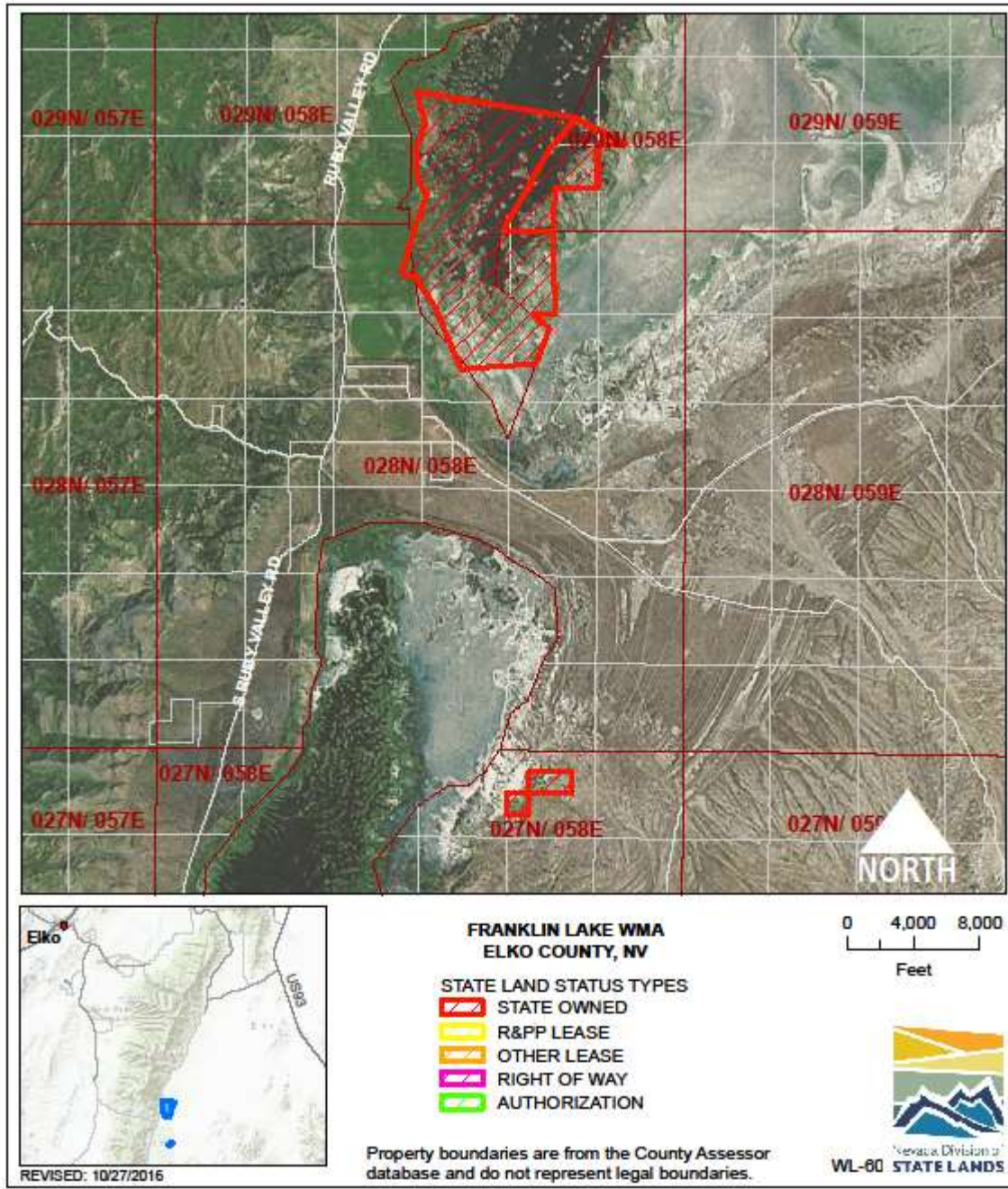
PERFORMING ASSET (Y/N/PARTIAL): Y

ISSUES/RESTRICTIONS: Casino stakeholders agreement for maintenance of improvements. Rights-of-way for stormwater and sewer at office site.

RECOMMENDATIONS: Retain for agency operations.



WILDLIFE: FALLON FIELD OFFICE WL-57
LOCATION: Fallon, Churchill County
ACRES: 0.65
USE/AGENCY: NDOW
MEETS AGENCY LAND NEEDS (Y/N/STRATEGIC): Y
PERFORMING ASSET (Y/N/PARTIAL): Y
ISSUES/RESTRICTIONS:
RECOMMENDATIONS: Retain for agency operations.



WILDLIFE: FRANKLIN LAKE WMA WL-60

LOCATION: Elko County

ACRES: 3,188.10

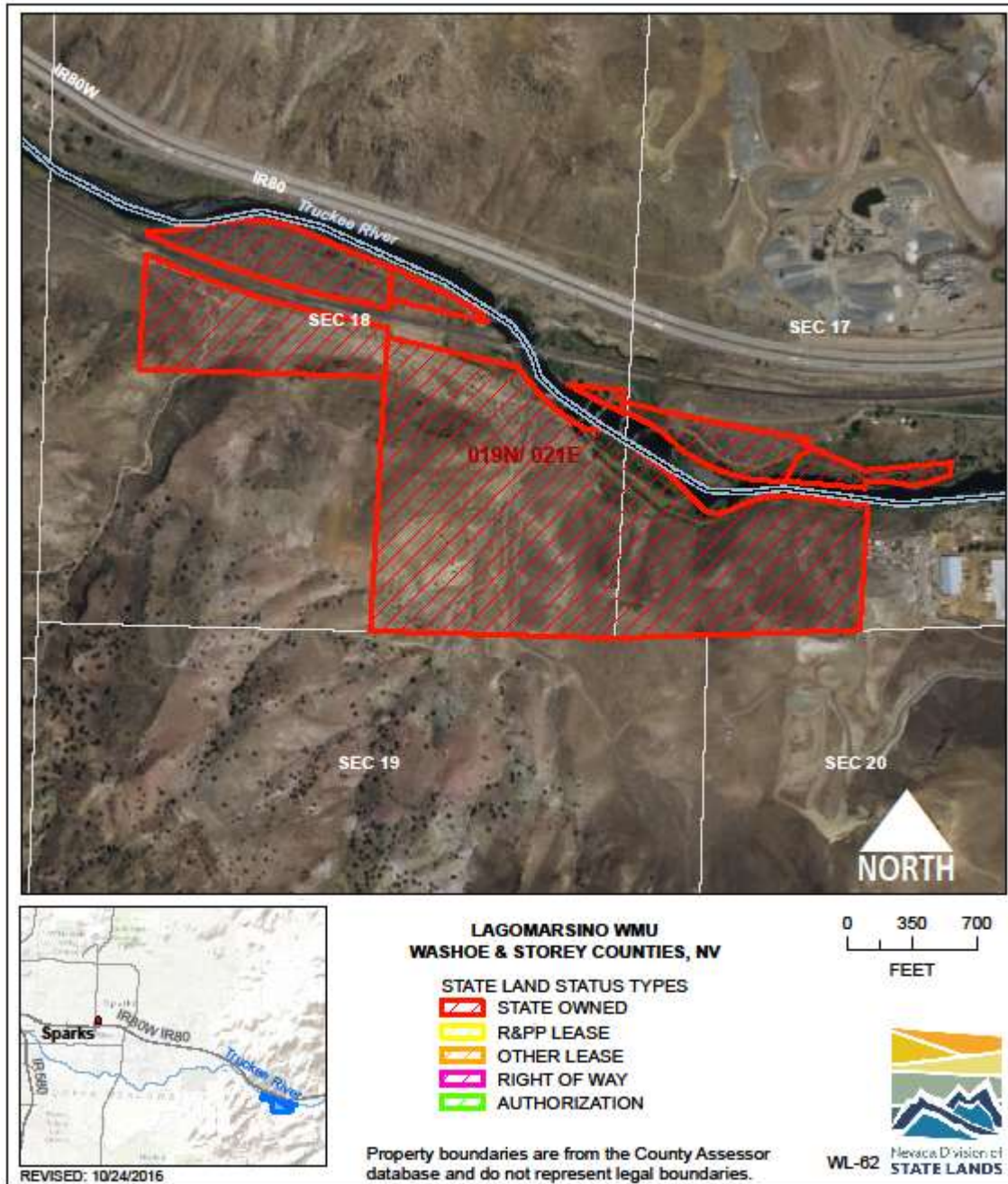
USE/AGENCY: NDOW

MEETS AGENCY LAND NEEDS (Y/N/STRATEGIC): Y

PERFORMING ASSET (Y/N/PARTIAL): Y

ISSUES/RESTRICTIONS: Conservation easement. 50-year cattle grazing agreement. Access agreement with US Forest Service.

RECOMMENDATIONS: Retain for agency operations.



WILDLIFE: LAGOMARSINO CANYON WL-62

LOCATION: Lockwood, Storey County

ACRES: 92.51

USE/AGENCY: NDOW

MEETS AGENCY LAND NEEDS (Y/N/STRATEGIC): Y

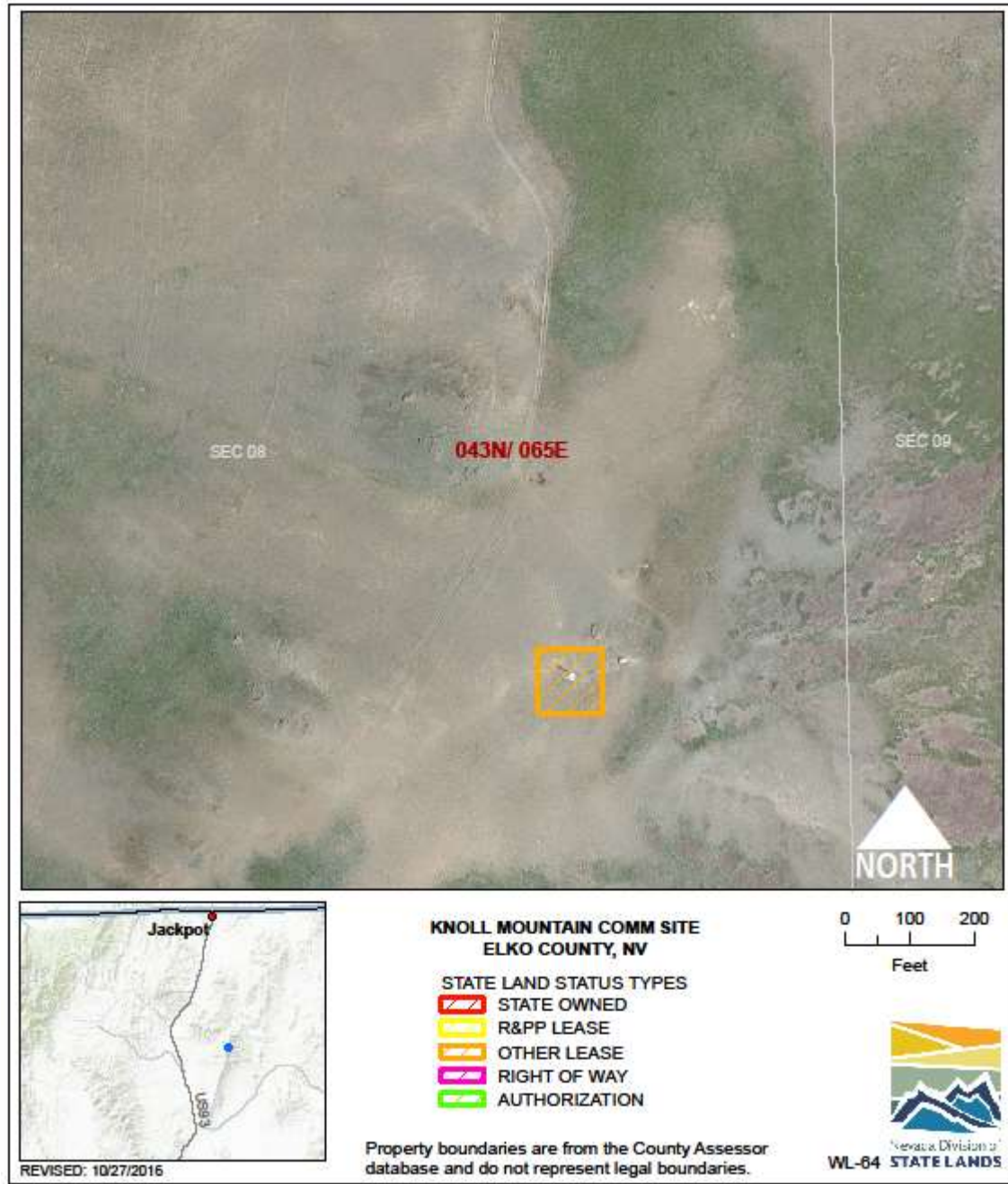
PERFORMING ASSET (Y/N/PARTIAL): Y

ISSUES/RESTRICTIONS: Railroad right-of-way.

RECOMMENDATIONS: Retain for agency operations.



WILDLIFE: TV HILL/COREY PEAK COMM SITE WL-63
LOCATION: Mineral County
ACRES: 0.23
USE/AGENCY: NDOW
MEETS AGENCY LAND NEEDS (Y/N/STRATEGIC): Y
PERFORMING ASSET (Y/N/PARTIAL): Y
ISSUES/RESTRICTIONS: BLM lease expires 1/8/2018.
RECOMMENDATIONS: Retain for agency operations.



WILDLIFE: KNOLL MT COMM SITE WL-64

LOCATION: Elko County

ACRES: 0.23

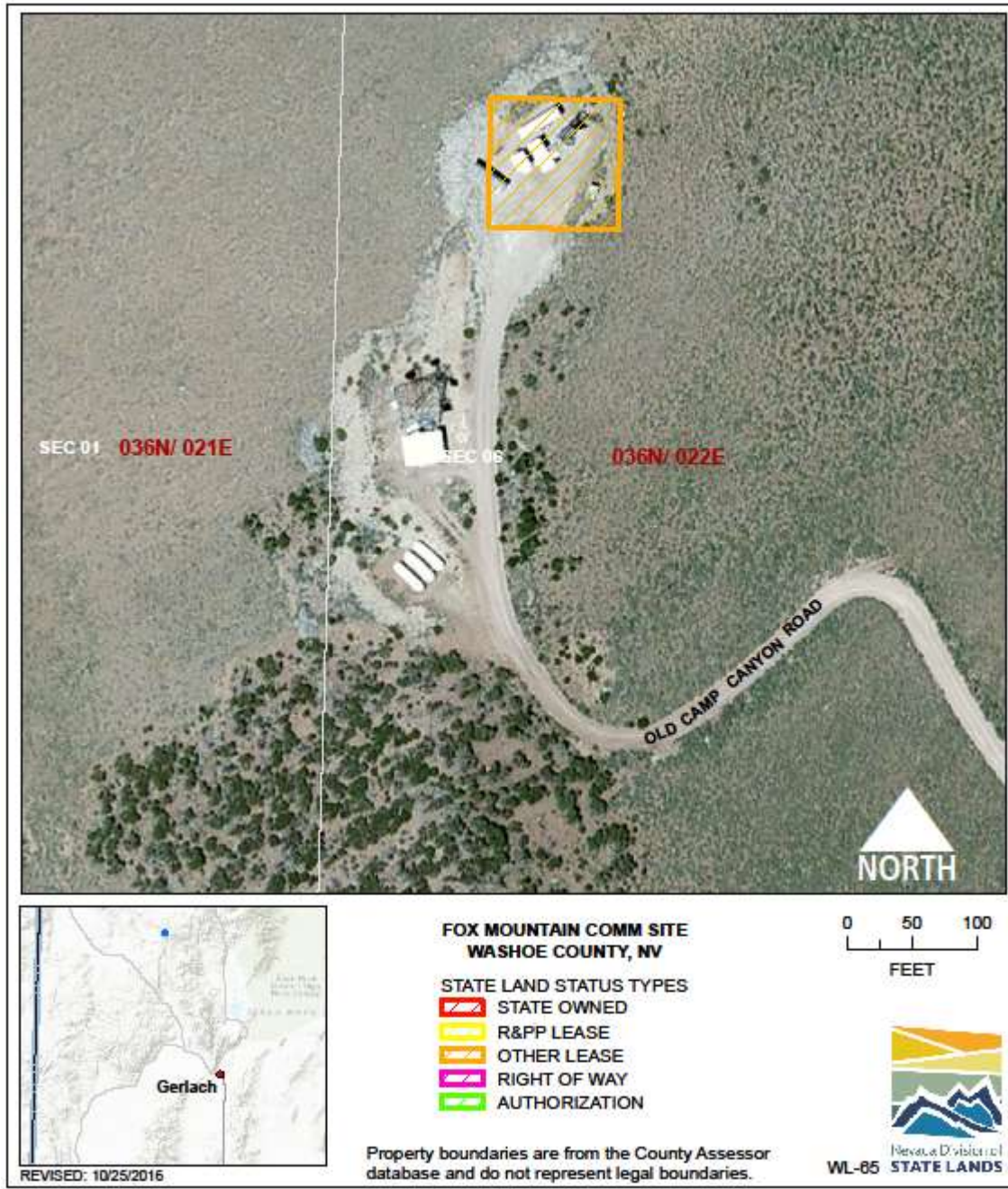
USE/AGENCY: NDOW

MEETS AGENCY LAND NEEDS (Y/N/STRATEGIC): Y

PERFORMING ASSET (Y/N/PARTIAL): Y

ISSUES/RESTRICTIONS: BLM lease expires 6/22/2027.

RECOMMENDATIONS: Retain for agency operations.



WILDLIFE: **FOX MT COMM SITE WL-65**

LOCATION: Washoe County

ACRES: 0.23

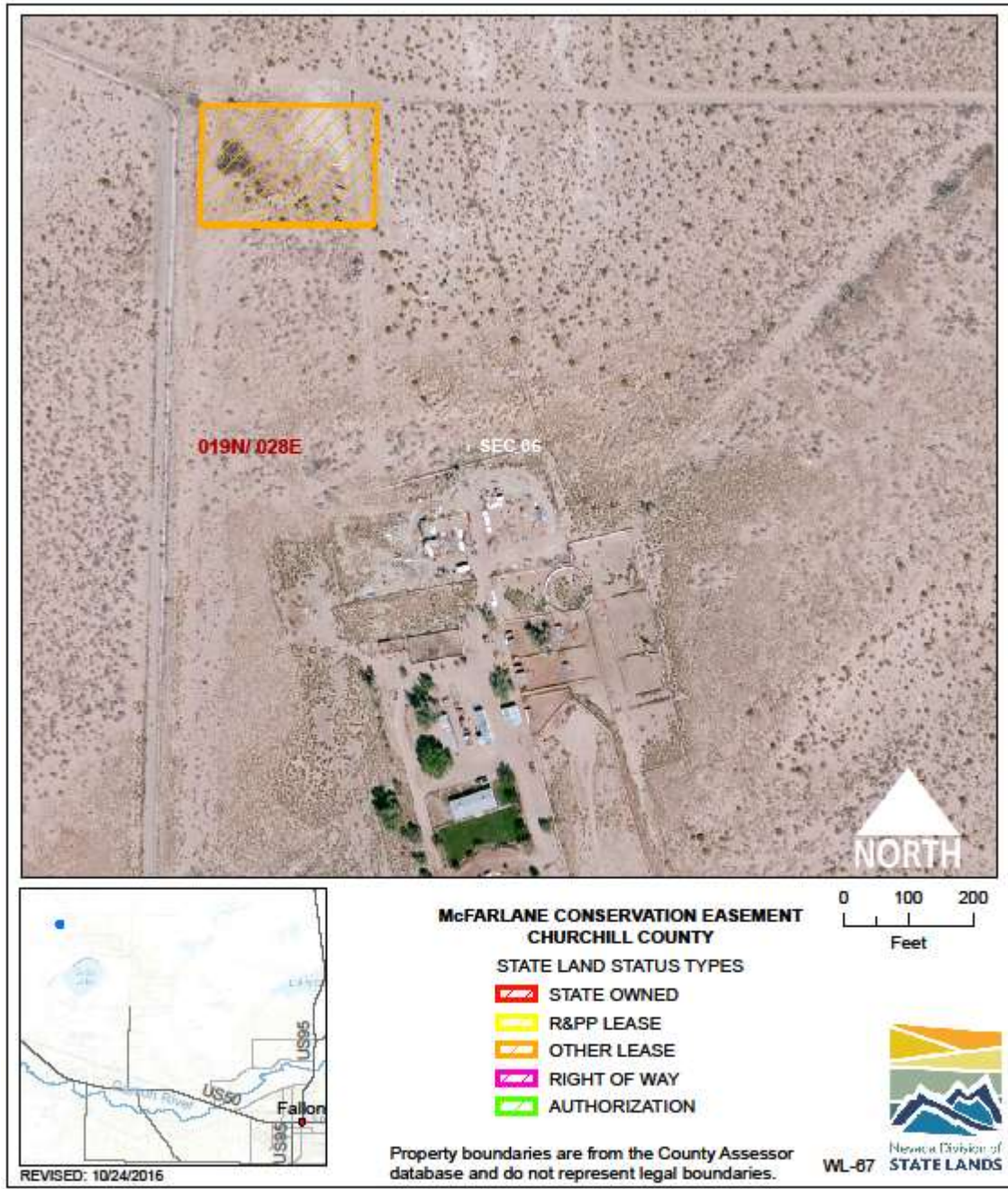
USE/AGENCY: NDOW

MEETS AGENCY LAND NEEDS (Y/N/STRATEGIC): Y

PERFORMING ASSET (Y/N/PARTIAL): Y

ISSUES/RESTRICTIONS: BLM Lease expires 8/22/2018. In Washoe County building - eliminate BLM lease.

RECOMMENDATIONS: Retain for agency operations.



WILDLIFE: MCFARLANE CONSERVATION EASEMENT WL-67

LOCATION: Churchill County

ACRES: 1.14

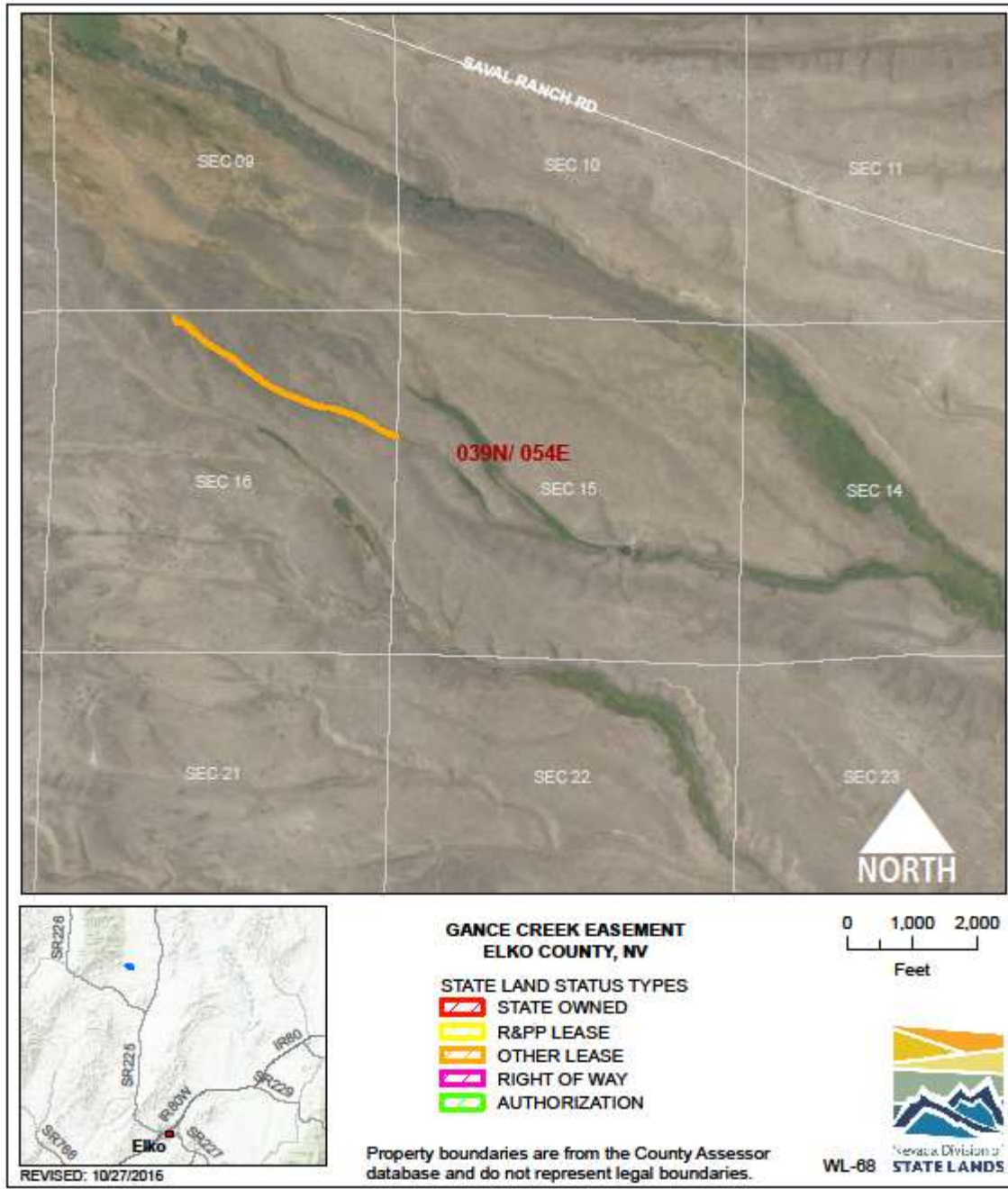
USE/AGENCY: NDOW

MEETS AGENCY LAND NEEDS (Y/N/STRATEGIC): Y

PERFORMING ASSET (Y/N/PARTIAL): Y

ISSUES/RESTRICTIONS: Lease, no expiration.

RECOMMENDATIONS: Retain for agency operations.



WILDLIFE: GANCE CREEK – SAVAL RES DITCH WL-68

LOCATION: Elko County

ACRES: 1.09

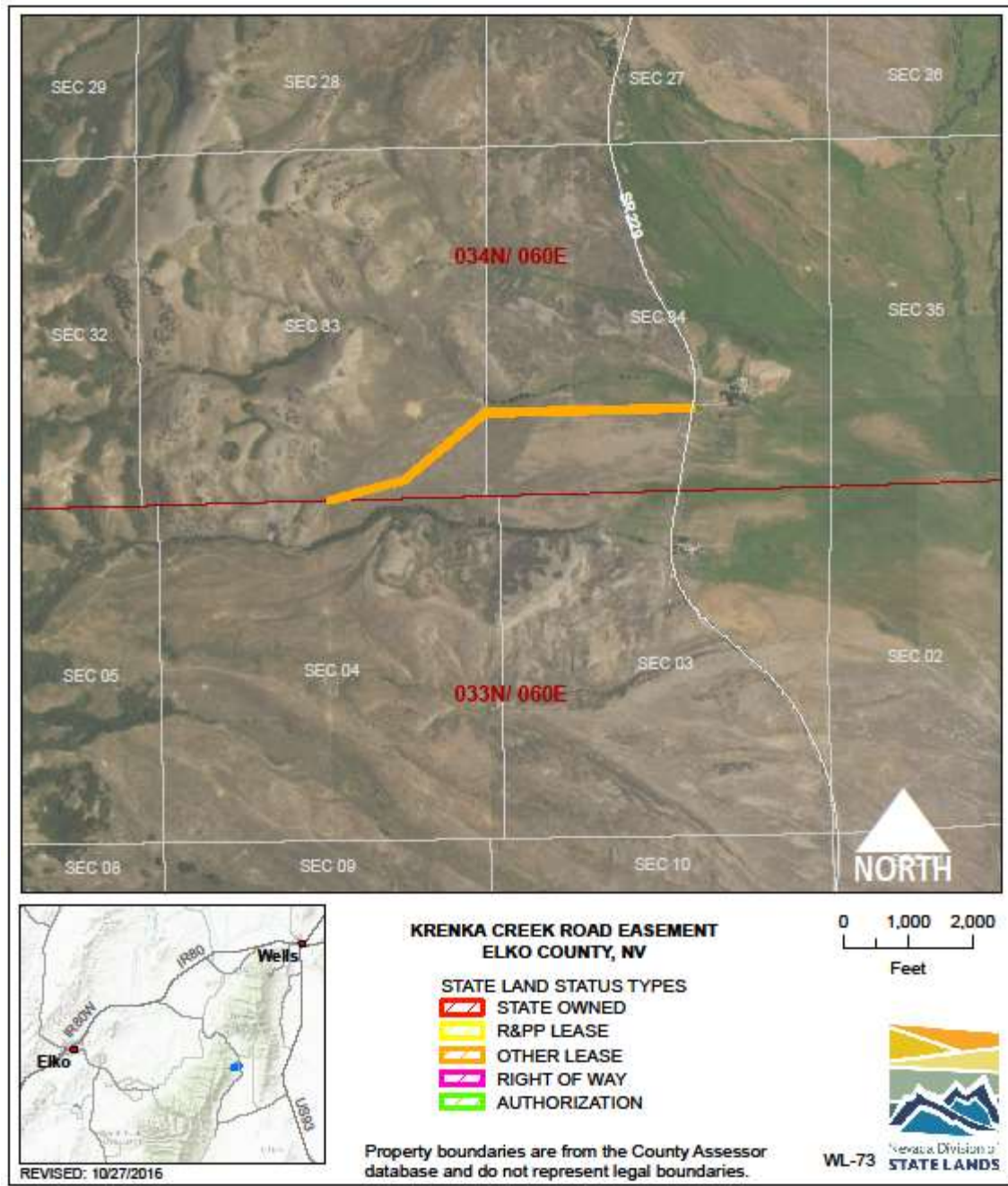
USE/AGENCY: NDOW

MEETS AGENCY LAND NEEDS (Y/N/STRATEGIC): S

PERFORMING ASSET (Y/N/PARTIAL): Y

ISSUES/RESTRICTIONS: 960'X12' BLM access right-of-way expires 9/2019.

RECOMMENDATIONS: Retain for agency operations.



WILDLIFE: KRENKA CREEK ROAD WL-73

LOCATION: Elko County

ACRES: 8.26

USE/AGENCY: NDOW

MEETS AGENCY LAND NEEDS (Y/N/STRATEGIC): Y

PERFORMING ASSET (Y/N/PARTIAL): Y

ISSUES/RESTRICTIONS: NDOT right-of-way.

RECOMMENDATIONS: Retain for agency operations. Access to Humboldt National Forest.



WILDLIFE: MOGUL PROPERTY WL-75

LOCATION: Washoe County

ACRES: 42.30

USE/AGENCY: NDOW

MEETS AGENCY LAND NEEDS (Y/N/STRATEGIC): S

PERFORMING ASSET (Y/N/PARTIAL): Y

ISSUES/RESTRICTIONS: Half ownership with Washoe County. US Forest Service access easement.

RECOMMENDATIONS: Retain for agency operations.